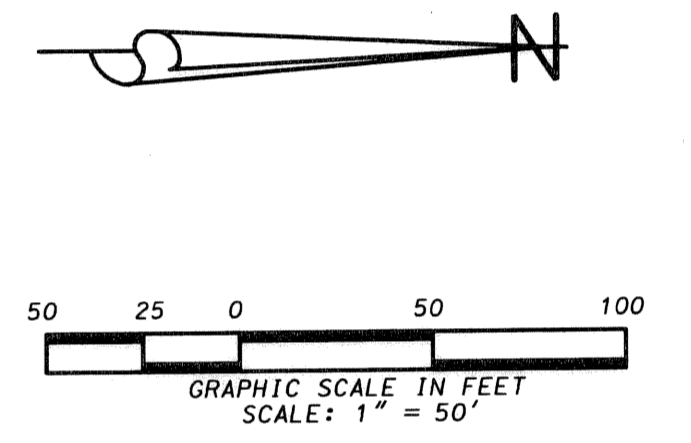
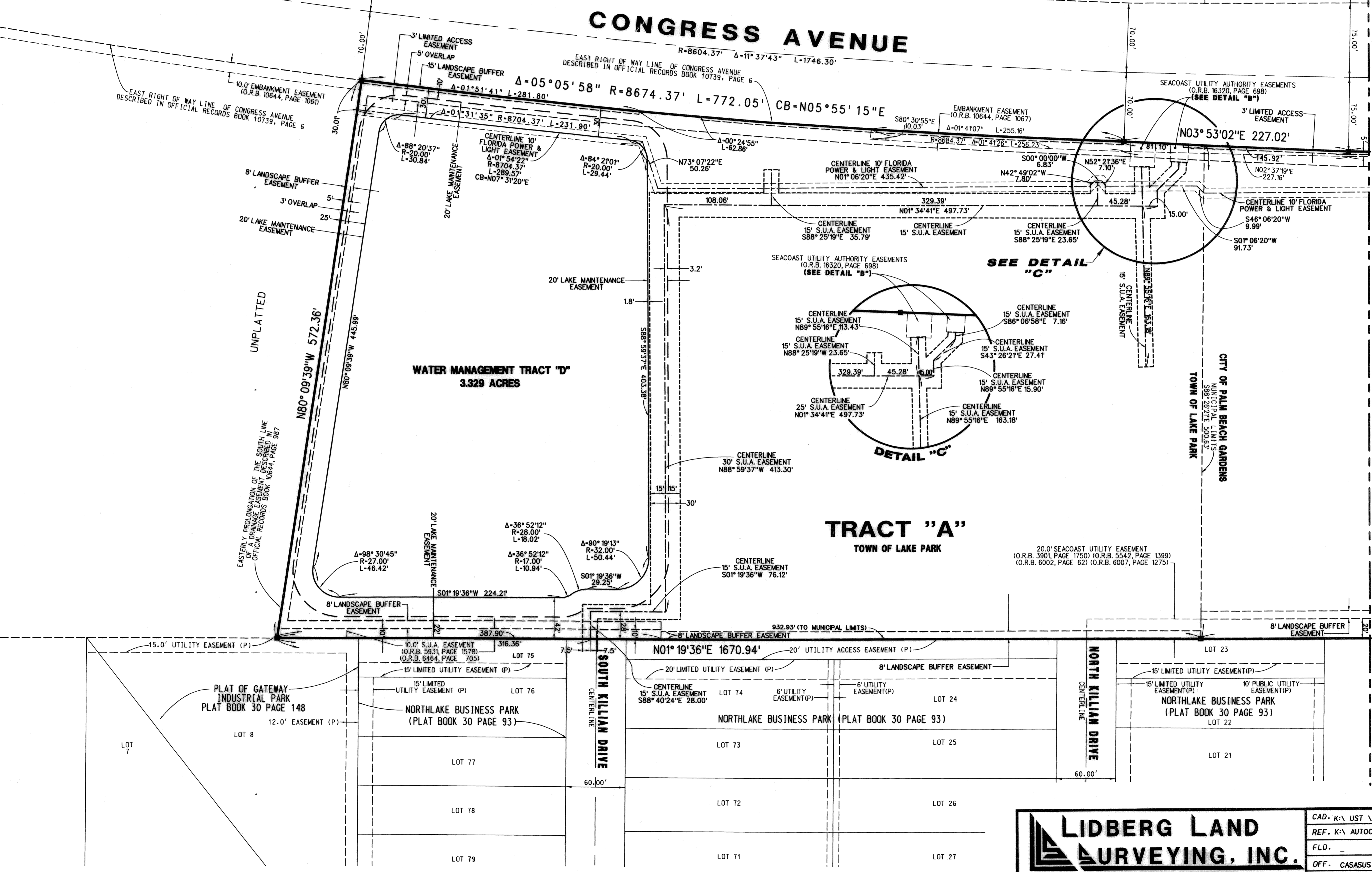
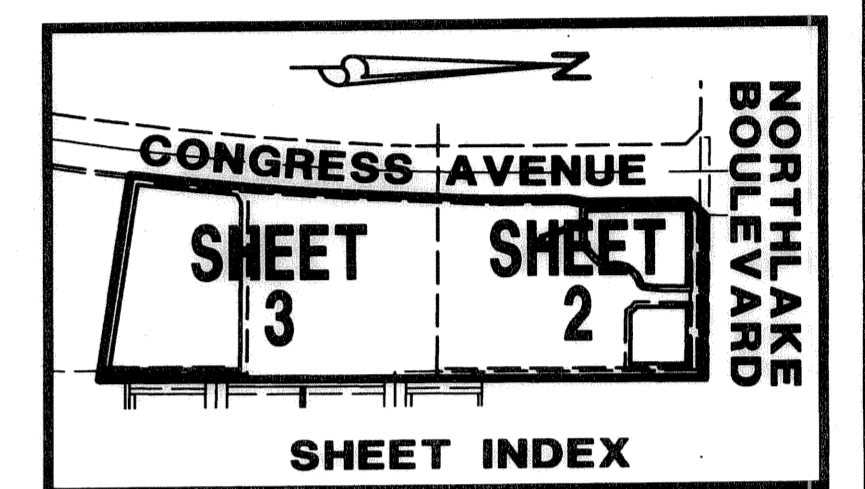
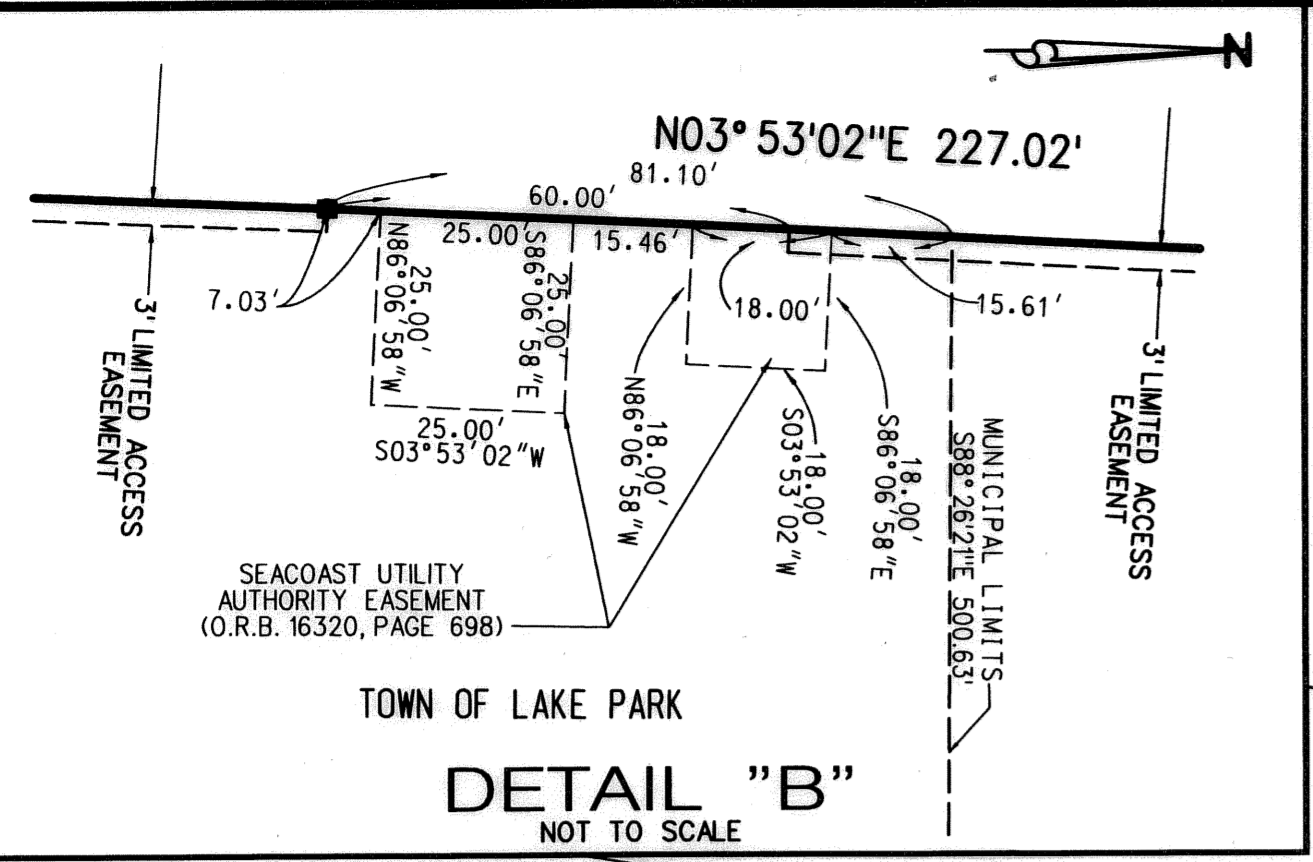


NORTHLAKE SQUARE EAST

SITUATE IN SECTION 19, TOWNSHIP 42 SOUTH, RANGE 43 EAST
 CITY OF PALM BEACH GARDENS AND THE TOWN OF LAKE PARK,
 PALM BEACH COUNTY, FLORIDA
 NOVEMBER 2004 SHEET 3 OF 4



AREA TABULATION

DESCRIPTION	ACREAGE
TRACT "A"	14.121
TRACT "B"	1.086
TRACT "C"	0.545
TRACT "D"	3.329
TRACT "E"	0.039
TOTAL	19.120

- ABBREVIATIONS**
- POC = POINT OF COMMENCEMENT
 - POB = POINT OF BEGINNING
 - PC = POINT OF CURVE
 - PT = POINT OF TANGENT
 - NR = NON RADIAL
 - C/L = CENTER LINE
 - R = RADIUS
 - L = ARC LENGTH
 - Δ = DELTA
 - S.U.A. = SEACOAST UTILITY AUTHORITY
 - L.A.E. = LIMITED ACCESS EASEMENT
 - F.P.L. = FLORIDA POWER & LIGHT COMPANY
 - PRM = PERMANENT REFERENCE MONUMENT
 - LB = LICENSED BUSINESS
 - DOT = DEPARTMENT OF TRANSPORTATION
 - LAE = LIMITED ACCESS EASEMENT
 - DE = DRAINAGE EASEMENT
 - UE = UTILITY EASEMENT
 - ORB = OFFICIAL RECORD BOOK
 - PB = PLAT BOOK
 - PG. = PAGE
 - TYP. = TYPICAL

NOTE: SEE SHEET 4 OF 4 FOR ADDITIONAL DRAINAGE EASEMENTS

LIDBERG LAND SURVEYING, INC.

675 West Indiantown Road, Suite 200,
 Jupiter, Florida 33458 TEL. 561-746-9454

CAD: K:\UST\194243\1670306\SHEET3.DGN			
REF: K:\AUTOCAD2000\194243\00-167\1670104.DWG			
FLD.	FB.	PG.	JOB 00-167-306
OFF. CASASUS			DATE NOV. 2004
CKD. D.C.L.	SHEET 3	OF 4	DWG. 000-167P