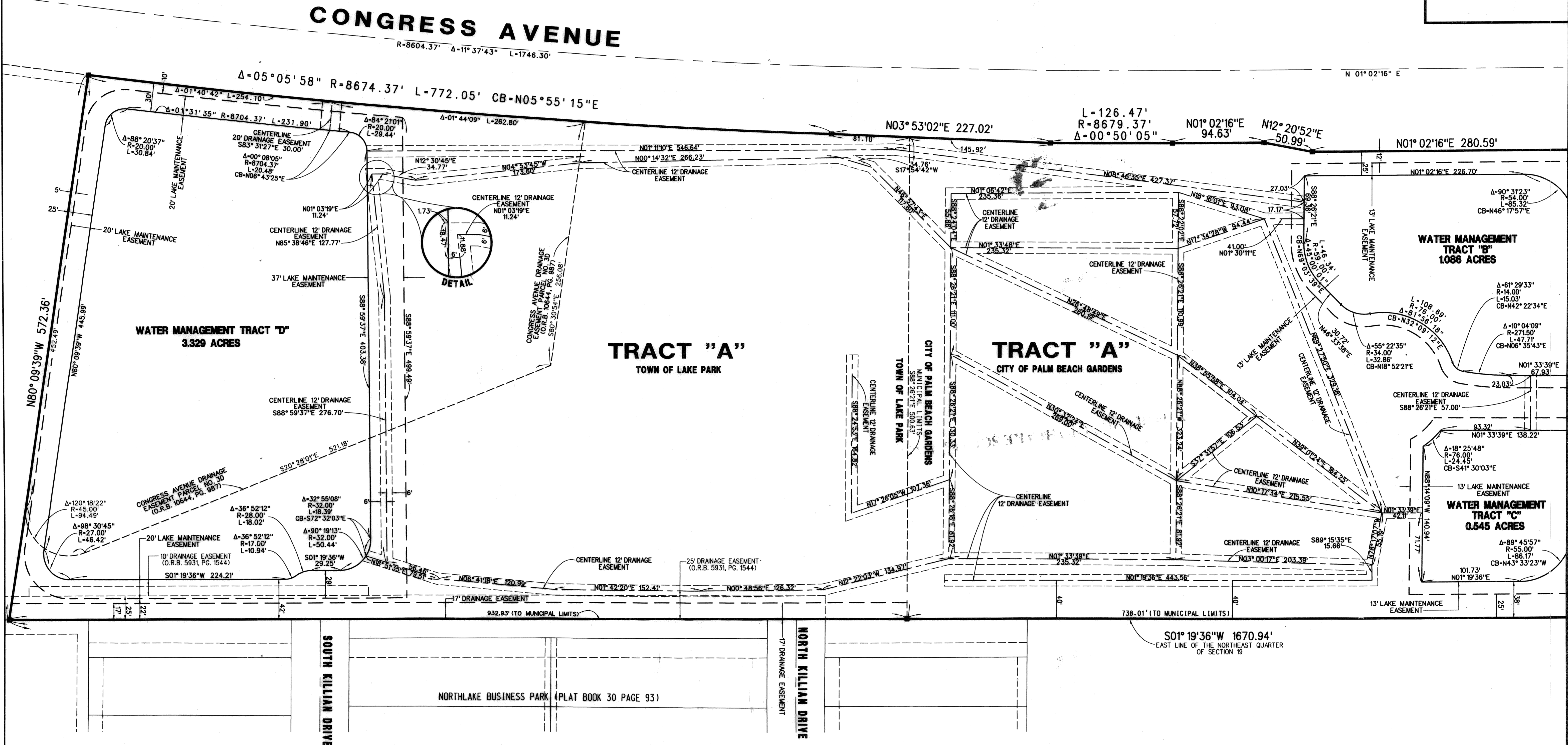
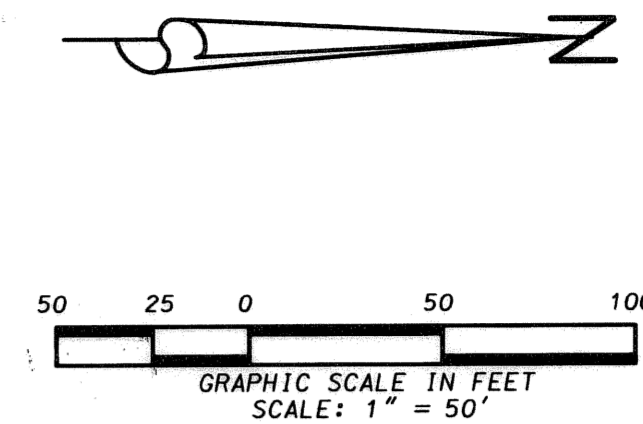


NORTHLAKE SQUARE EAST

SITUATE IN SECTION 19, TOWNSHIP 42 SOUTH, RANGE 43 EAST
 CITY OF PALM BEACH GARDENS AND THE TOWN OF LAKE PARK,
 PALM BEACH COUNTY, FLORIDA

NOVEMBER 2004 SHEET 4 OF 4



DRAINAGE EASEMENTS DETAIL SHEET

675 West Indiantown Road, Suite 200, Jupiter, Florida 33458 TEL. 561-746-8454		
CAD: K:\UST \ 194243 \ 1670306 \ SHEET4.DGN REF: K:\AUTOCAD2000 \ 194243 \ 00-167 \ 1670104.DWG FLD: _____ OFF: CASASUS CKD: D.C.L.	FB: _____ PG: _____ SHEET 4 OF 4	JOB 00-167-306 DATE NOV. 2004 DWG. D00-167P

...UST194243\1670306\SHEET4.dgn 01/06/2005 10:09:58 AM