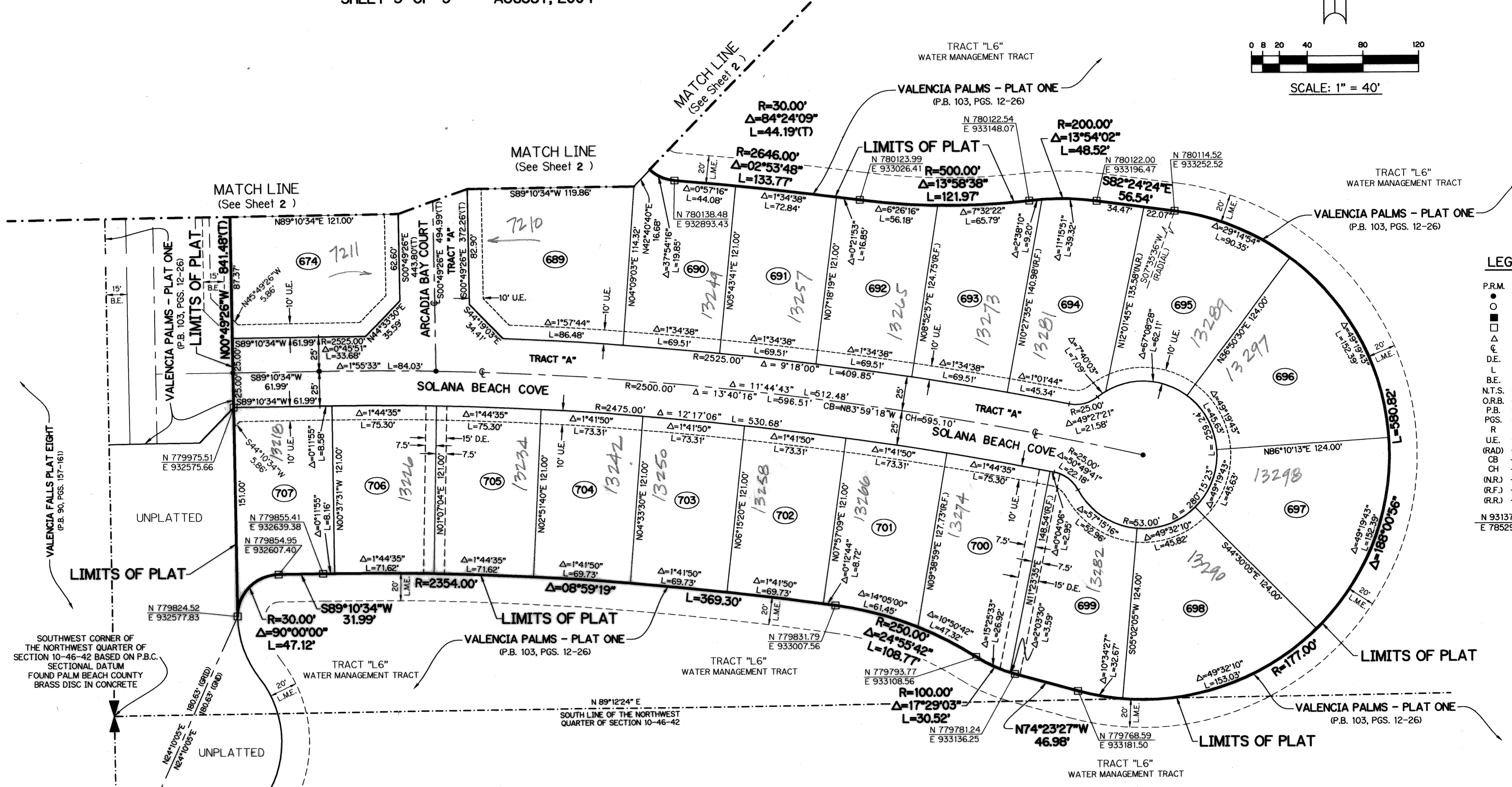
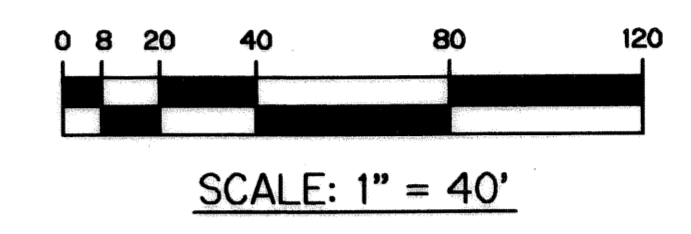


202

VALENCIA VII (A.K.A. FICHERA) PLANNED UNIT DEVELOPMENT VALENCIA PALMS - PLAT FIVE

A PARCEL OF LAND LYING IN THE NORTHWEST 1/4 AND THE SOUTHWEST 1/4 OF SECTION 10, TOWNSHIP 46 SOUTH, RANGE 42 EAST, PALM BEACH COUNTY, FLORIDA

SHEET 3 OF 3 AUGUST, 2004



- LEGEND:**
- P.R.M. - PERMANENT REFERENCE MONUMENT
 - - SET PERMANENT CONTROL POINT, LB #6674
 - - SET PARKER KALON NAIL AND P.R.M. DISK LB #6674
 - - SET PERMANENT REFERENCE MONUMENT, LB #6674
 - - FOUND PERMANENT REFERENCE MONUMENT, LB #6674
 - △ - DELTA ANGLE
 - ⊙ - CENTERLINE
 - ⊕ - DRAINAGE EASEMENT
 - L - ARC LENGTH
 - B.E. - BUFFER EASEMENT
 - N.T.S. - NOT TO SCALE
 - O.R.B. - OFFICIAL RECORD BOOK
 - P.B. - PLAT BOOK
 - PGS. - PAGES
 - R - RADIUS
 - U.E. - UTILITY EASEMENT
 - (RAD) - RADIAL
 - CB - CHORD BEARING
 - CH - CHORD DISTANCE
 - (N.R.) - NON-RADIAL
 - (R.F.) - RADIAL TO FRONT LOT LINE
 - (R.R.) - RADIAL TO REAR LOT LINE
- N 931379.1119
E 785294.7754 - DENOTES STATE PLANE COORDINATES

SOUTHWEST CORNER OF THE NORTHWEST QUARTER OF SECTION 10-46-42 BASED ON P.B.C. SECTIONAL DATUM FOUND PALM BEACH COUNTY BRASS DISK IN CONCRETE

FND. P.B.CO.
BRASS DISK IN CONC.
S.M.FLOWER
N 779659.72
E 932503.96

THIS INSTRUMENT PREPARED BY
PERRY C. WHITE, P.S.M. 4213, STATE OF FLORIDA
LAWSON, NOBLE AND WEBB, INC.
ENGINEERS PLANNERS SURVEYORS
420 COLUMBIA DRIVE
WEST PALM BEACH, FLORIDA 33409
LB-6674

NOTE:
COORDINATES SHOWN ARE GRID COORDINATES
DATUM = NAD 83 (1990 ADJUSTMENT)
ZONE = FLORIDA EAST ZONE
LINEAR UNIT = U.S. SURVEY FEET
COORDINATE SYSTEM = 1983 STATE PLANE
TRANSVERSE MERCATOR PROJECTION
ALL DISTANCES ARE GROUND
SCALE FACTOR = 1.0000304
PLAT BEARING = GRID BEARING
NO ROTATION

SUBDIVISION VALENCIA PALMS - PL 5
BOOK 102, PAGE 702
FLOOD ZONE B
QUAD # 30
SEC 905
TWP NAME VALENCIA VII

