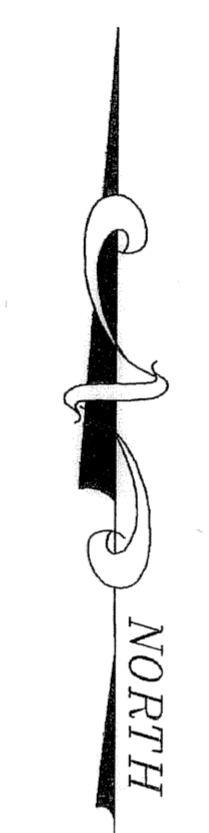
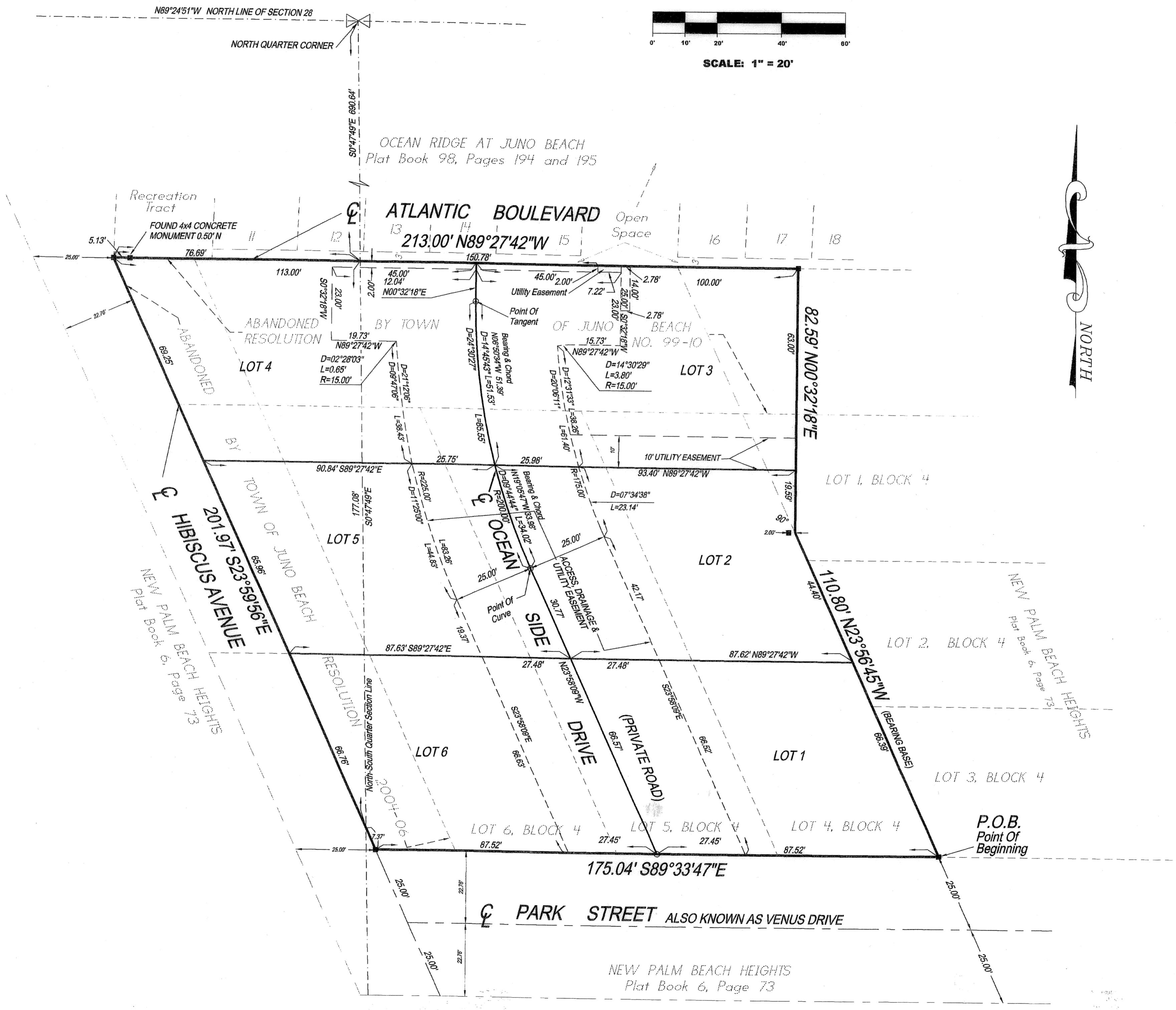
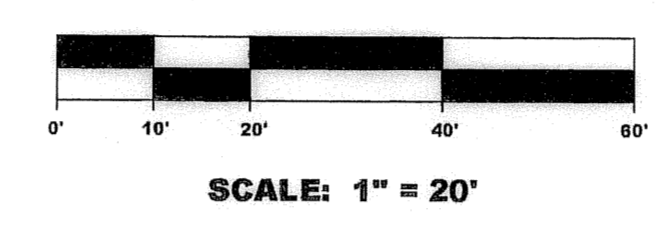


# OCEAN SIDE AT JUNO BEACH

BEING A REPLAT OF LOTS 4 THROUGH 6, BLOCK 4, A PORTION OF LOT 1, BLOCK 4,  
A PORTION OF ATLANTIC BOULEVARD AND A PORTION OF HIBISCUS AVENUE, PLAT OF NEW PALM BEACH HEIGHTS, PLAT BOOK 6, PAGE 73  
LYING IN THE SECTION 28, TOWNSHIP 41 SOUTH, RANGE 43 EAST, TOWN OF JUNO BEACH, PALM BEACH COUNTY, FLORIDA

DECEMBER 2004  
SHEET 2 OF 2



- LEGEND:**
- = SET PERMANENT REFERENCE MONUMENT #3010
  - D = CENTRAL ANGLE
  - R = RADIUS
  - L = LENGTH OF ARC
  - ⊙ = CENTERLINE
  - = PERMANENT CONTROL POINT (P.C.P.)



THIS INSTRUMENT WAS PREPARED BY:  
JOHN J. DEDMAN  
**JUPITER SURVEYING, INC.**  
(CERTIFICATE OF AUTHORIZATION #LB 5033)

JUPITER SURVEYING, INC.  
609 N. Hepburn Ave, Suite 206  
Jupiter, Florida 33458  
561-744-4594