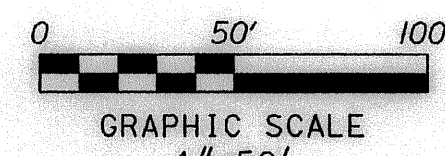
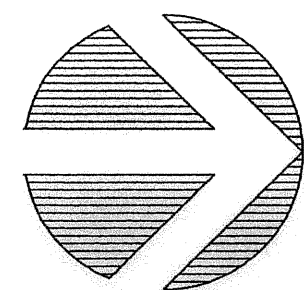


PERIMETER

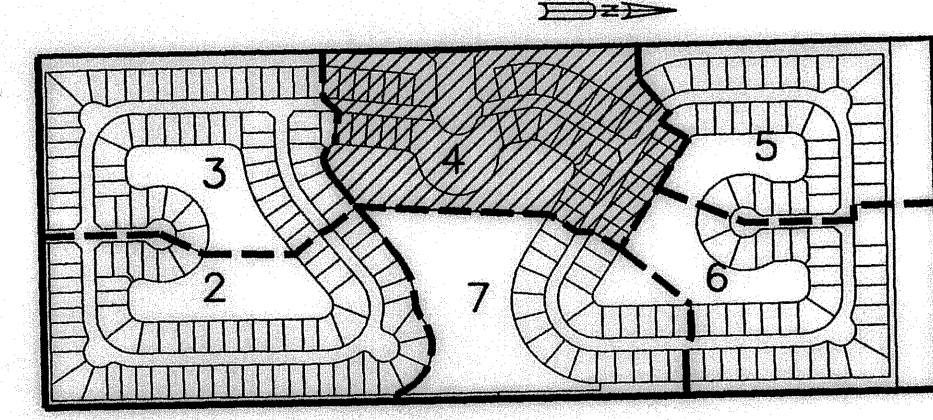
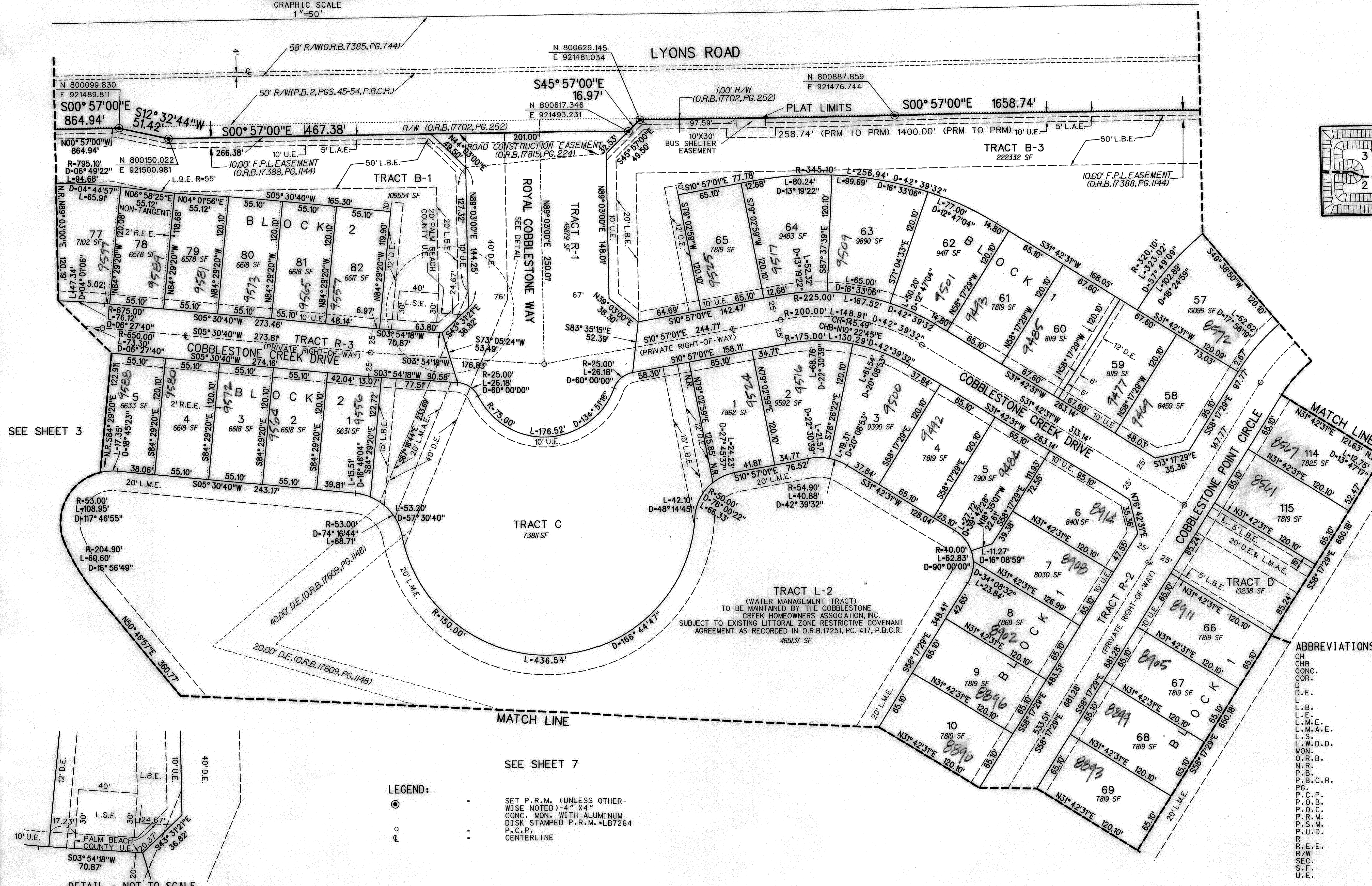
SURVEYING & MAPPING
Certificate of Authorization No. LB7264
Prepared by: Jeff S. Hodapp, P.S.M.
951 Broken Sound Parkway, Suite 320
Boca Raton, Florida 33487
Tel: (561) 241-9988
Fax: (561) 241-5182



COUNTRYSIDE MEADOWS

PETITION NO. 2003-035 (COUNTRYSIDE MEADOWS AGR-PDD)
A REPLAT OF TRACT A OF WEST BOYNTON FARMS PLAT (P.B. 104, PGS. 9 - 11, P.B.C.R.)
IN SECTION 20, TOWNSHIP 45 SOUTH, RANGE 42 EAST,
PALM BEACH COUNTY, FLORIDA.
NOVEMBER, 2004

15
SHEET 4 OF 7



KEY MAP
NOT TO SCALE

SEE SHEET 5

SEE SHEET 3

SEE SHEET 7

- LEGEND:**
- SET P.R.M. (UNLESS OTHERWISE NOTED) - 4" X 4" CONC. MON. WITH ALUMINUM DISK STAMPED P.R.M. • LB7264
 - P.C.P.
 - ⊙ CENTERLINE

- ABBREVIATIONS:**
- CH CHORD BEARING
 - CHB CONCRETE CORNER
 - CONC. CONCRETE
 - COR. CORNER
 - D DELTA (CENTRAL ANGLE)
 - D.E. DRAINAGE EASEMENT
 - L ARCLength
 - L.B. LICENSED BUSINESS
 - L.E. LANDSCAPE EASEMENT
 - L.M.E. LAKE MAINTENANCE EASEMENT
 - L.M.A.E. LAKE MAINTENANCE ACCESS EASEMENT
 - L.S. LICENSED SURVEYOR
 - L.W.D.D. LAKE WORTH DRAINAGE DISTRICT MONUMENT
 - O.R.B. OFFICIAL RECORDS BOOK
 - N.R. NON-RADIAL
 - P.B. PLAT BOOK
 - P.B.C.R. PALM BEACH COUNTY RECORDS
 - P.C. PAGE
 - P.C.P. PERMANENT CONTROL POINT
 - P.O.B. POINT OF BEGINNING
 - P.O.C. POINT OF COMMENCEMENT
 - P.R.M. PERMANENT REFERENCE MONUMENT
 - P.S.M. PROFESSIONAL SURVEYOR & MAPPER
 - P.U.D. PLANNED UNIT DEVELOPMENT
 - R RADIAL
 - R.E.E. ROOF ENCROACHMENT EASEMENT
 - R.O.W. RIGHT-OF-WAY
 - SEC. SECTION
 - S.F. SQUARE FEET
 - U.E. UTILITY EASEMENT

SUBDIVISION: Countryside Meadows
BOOK: B4
PAGE: D15
FLOOD MAP #: 185A
BLOCK: 50
QUAD: 50
ZONING: PDD
SF: 32457
TAX: 745
PUB NAME: West Boynton Farms

