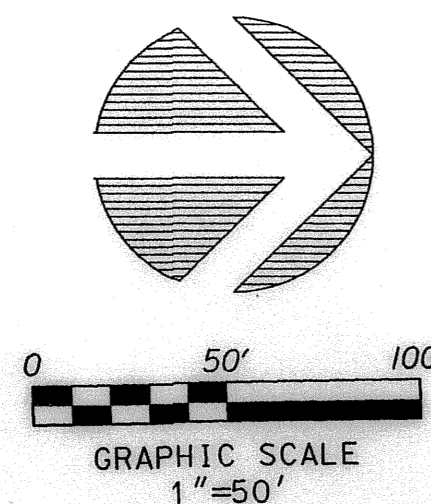


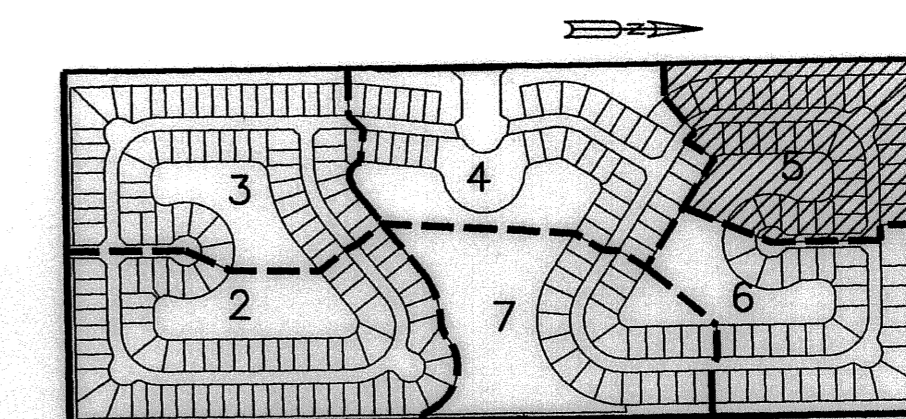


SURVEYING & MAPPING
Certificate of Authorization No. LB7264
Prepared by: Jeff S. Hodapp, P.S.M.
951 Broken Sound Parkway, Suite 320
Boca Raton, Florida 33487
Tel: (561) 241-9988
Fax: (561) 241-5182

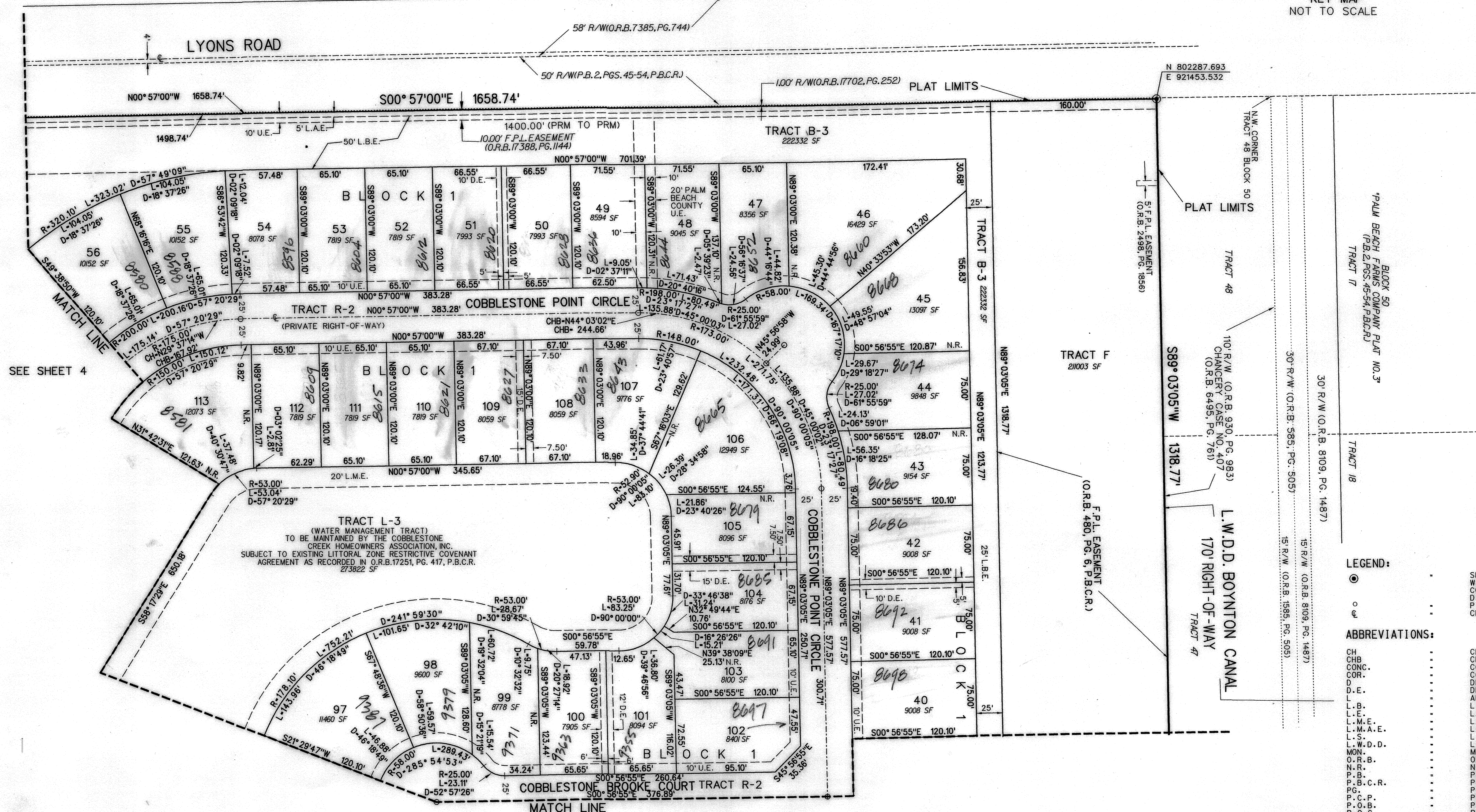


COUNTRYSIDE MEADOWS

PETITION NO. 2003-035 (COUNTRYSIDE MEADOWS AGR-PDD)
A REPLAT OF TRACT A OF WEST BOYNTON FARMS PLAT (P.B. 104, PGS. 9 - 11, P.B.C.R.)
IN SECTION 20, TOWNSHIP 45 SOUTH, RANGE 42 EAST,
PALM BEACH COUNTY, FLORIDA.
NOVEMBER, 2004



KEY MAP
NOT TO SCALE



- LEGEND:**
- SET P.R.M. (UNLESS OTHERWISE NOTED) - 4" X 4" CONC. MON. WITH ALUMINUM DISK STAMPED P.R.M. • LB7264
 - P.C.P. CENTERLINE
- ABBREVIATIONS:**
- CH CHORD
 - CHB CHORD BEARING
 - CONC. CONCRETE
 - COR. CORNER
 - D.E. DELTA (CENTRAL ANGLE)
 - DRAIN. DRAINAGE EASEMENT
 - ARCL. ARCLength
 - L.B. LICENSED BUSINESS
 - L.E. LANDSCAPE EASEMENT
 - L.M.E. LAKE MAINTENANCE EASEMENT
 - L.M.A.E. LAKE MAINTENANCE ACCESS EASEMENT
 - L.S. LICENSED SURVEYOR
 - L.W.D.D. LAKE WORTH DRAINAGE DISTRICT
 - MON. MONUMENT
 - O.R.B. OFFICIAL RECORDS BOOK
 - NON-RADIAL NON-RADIAL
 - P.B. PLAT BOOK
 - P.B.C.R. PALM BEACH COUNTY RECORDS
 - P.C. PAGE
 - P.C.P. PERMANENT CONTROL POINT
 - P.O.B. POINT OF BEGINNING
 - P.O.C. POINT OF COMMENCEMENT
 - P.R.M. PERMANENT REFERENCE MONUMENT
 - P.S.M. PROFESSIONAL SURVEYOR & MAPPER
 - P.U.D. PLANNED UNIT DEVELOPMENT
 - R. RADIUS
 - R.E.E. ROOF ENCROACHMENT EASEMENT
 - R/W RIGHT-OF-WAY
 - SEC. SECTION
 - S.F. SQUARE FEET
 - U.E. UTILITY EASEMENT

SUBDIVISION: Countryside Meadows
BOOK: 104
PAGE: 016
FLOOD ZONE: B
QUAD: 50
SE:
TAZ: 745
FUD NAME: West Boynton Farms

TRACT L-3
(WATER MANAGEMENT TRACT)
TO BE MAINTAINED BY THE COBBLESTONE CREEK HOMEOWNERS ASSOCIATION, INC.
SUBJECT TO EXISTING LITTORAL ZONE RESTRICTIVE COVENANT AGREEMENT AS RECORDED IN O.R.B. 17251, PG. 417, P.B.C.R. 273822 SF

TRACT F
21003 SF

TRACT B-3
222332 SF

TRACT B-3
222332 SF

TRACT B-3
222332 SF

TRACT B-3
222332 SF

TRACT B-3
222332 SF

TRACT B-3
222332 SF

TRACT B-3
222332 SF

TRACT B-3
222332 SF

TRACT B-3
222332 SF

TRACT B-3
222332 SF

TRACT B-3
222332 SF

TRACT B-3
222332 SF

TRACT B-3
222332 SF

TRACT B-3
222332 SF

TRACT B-3
222332 SF

SEE SHEET 6

SEE SHEET 4