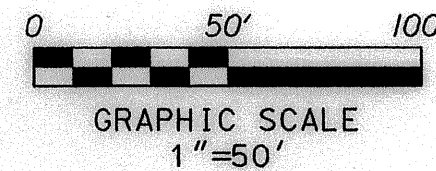
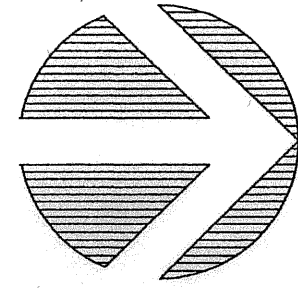


# PERIMETER

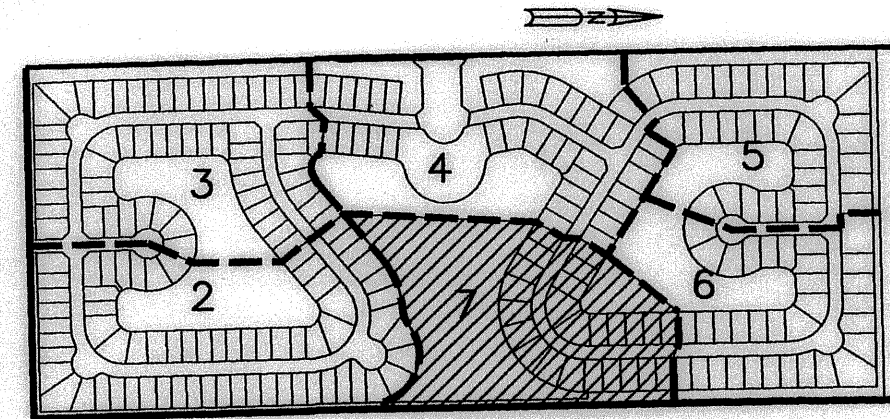
**SURVEYING & MAPPING**  
 Certificate of Authorization No. LB7264  
 Prepared by: Jeff S. Hodapp, P.S.M.  
 951 Broken Sound Parkway, Suite 320  
 Boca Raton, Florida 33487  
 Tel: (561) 241-9988  
 Fax: (561) 241-5182



# COUNTRYSIDE MEADOWS

PETITION NO. 2003-035 (COUNTRYSIDE MEADOWS AGR-PDD)  
 A REPLAT OF TRACT A OF WEST BOYNTON FARMS PLAT (P.B. 104, PGS. 9 - 11, P.B.C.R.)  
 IN SECTION 20, TOWNSHIP 45 SOUTH, RANGE 42 EAST,  
 PALM BEACH COUNTY, FLORIDA.  
 NOVEMBER, 2004

SEE SHEET 4



KEY MAP  
NOT TO SCALE

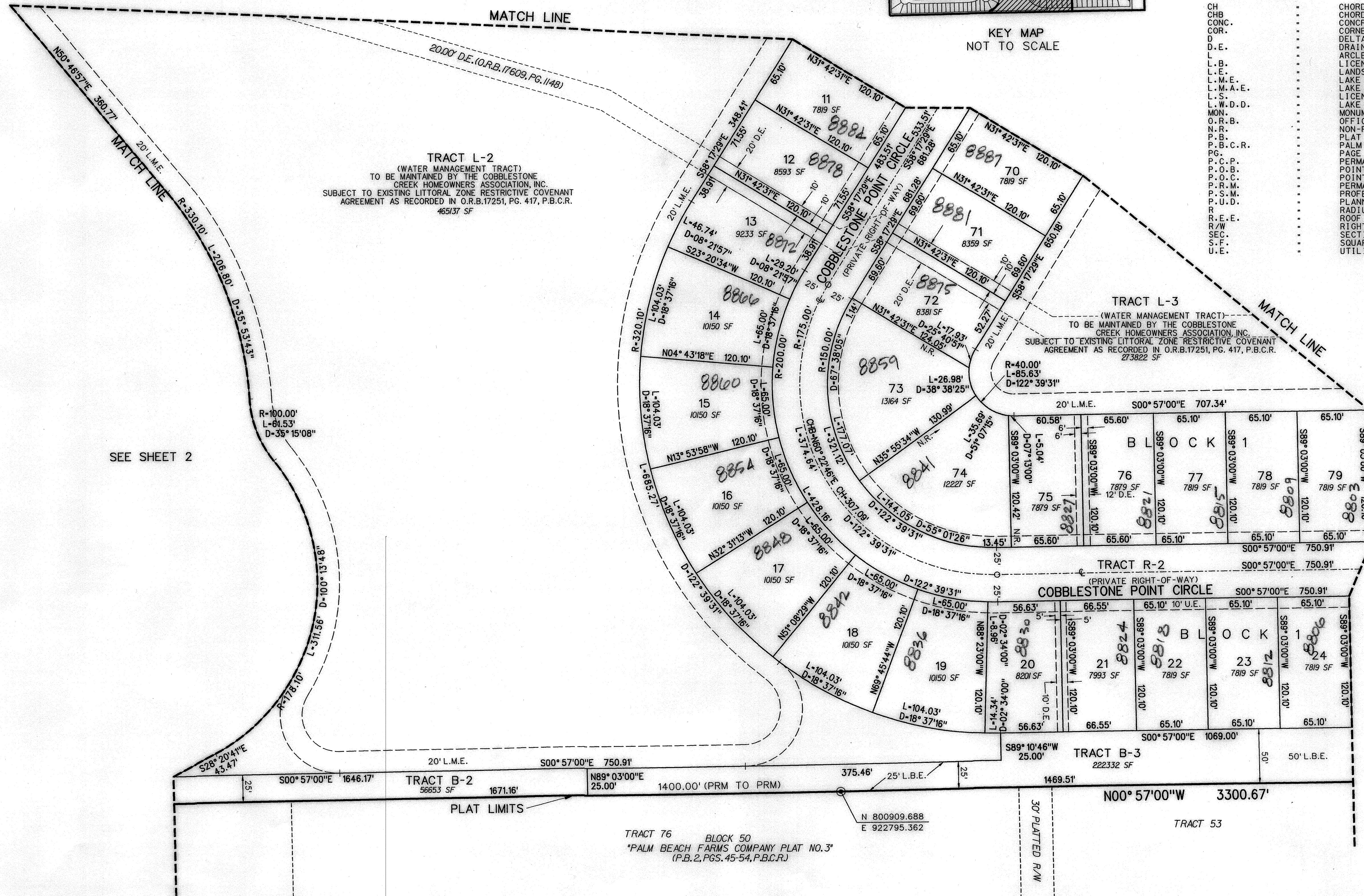
### LEGEND:

- SET P.R.M. (UNLESS OTHERWISE NOTED)-4" X 4" CONC. MON. WITH ALUMINUM DISK STAMPED P.R.M. LB7264
- P.C.P. CENTERLINE

### ABBREVIATIONS:

- CH CHORD
- CHB CHORD BEARING
- CONC. CONCRETE
- COR. CORNER
- Δ DELTA (CENTRAL ANGLE)
- D.E. DRAINAGE EASEMENT
- L ARCLength
- L.B. LICENSED BUSINESS
- L.E. LANDSCAPE EASEMENT
- L.M.E. LAKE MAINTENANCE EASEMENT
- L.M.A.E. LAKE MAINTENANCE ACCESS EASEMENT
- L.S. LICENSED SURVEYOR
- L.W.D.D. LAKE WORTH DRAINAGE DISTRICT
- MON. MONUMENT
- O.R.B. OFFICIAL RECORDS BOOK
- N.R. NON-RADIAL
- P.B. PLAT BOOK
- P.B.C.R. PALM BEACH COUNTY RECORDS
- P.C. P.C.P.
- P.C.P. PERMANENT CONTROL POINT
- P.O.B. POINT OF BEGINNING
- P.O.C. POINT OF COMMENCEMENT
- P.R.M. PERMANENT REFERENCE MONUMENT
- P.S.M. PROFESSIONAL SURVEYOR & MAPPER
- P.U.D. PLANNED UNIT DEVELOPMENT
- R RADIUS
- R.E.E. ROOF ENCROACHMENT EASEMENT
- R/W RIGHT-OF-WAY
- SEC. SECTION
- S.F. SQUARE FEET
- U.E. UTILITY EASEMENT

## SHEET 7 OF 7



SEE SHEET 2

SEE SHEET 6

SUBMISSION Countryside Meadows  
 BOOK 104 FLOOD MAP # 1854  
 QUAD # 50 ZONING PDD  
 SE ZIP CODE 33487  
 TAZ 745  
 FOD NAME West Boynton Farms