

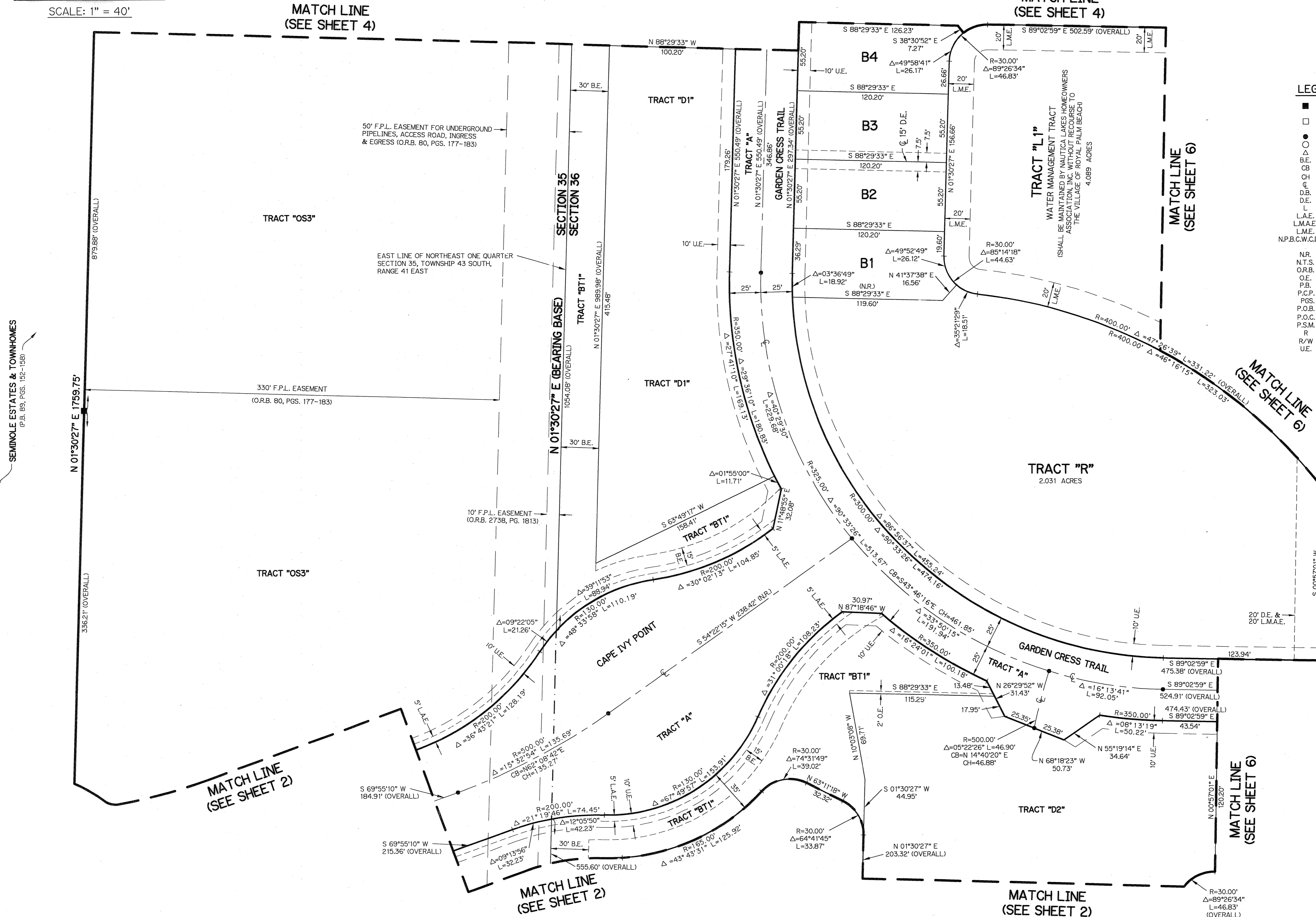
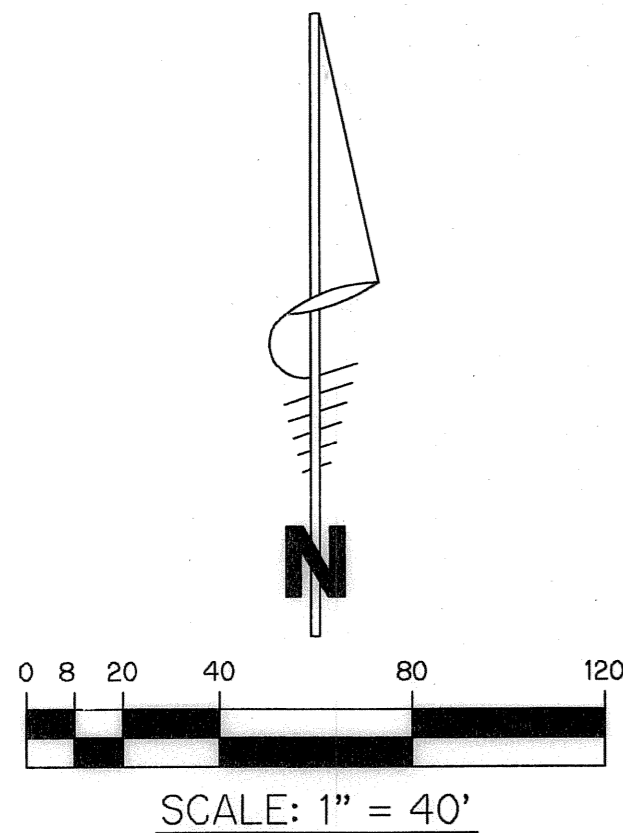
NAUTICA LAKES PLANNED UNIT DEVELOPMENT

NAUTICA LAKES P.U.D. - PLAT ONE

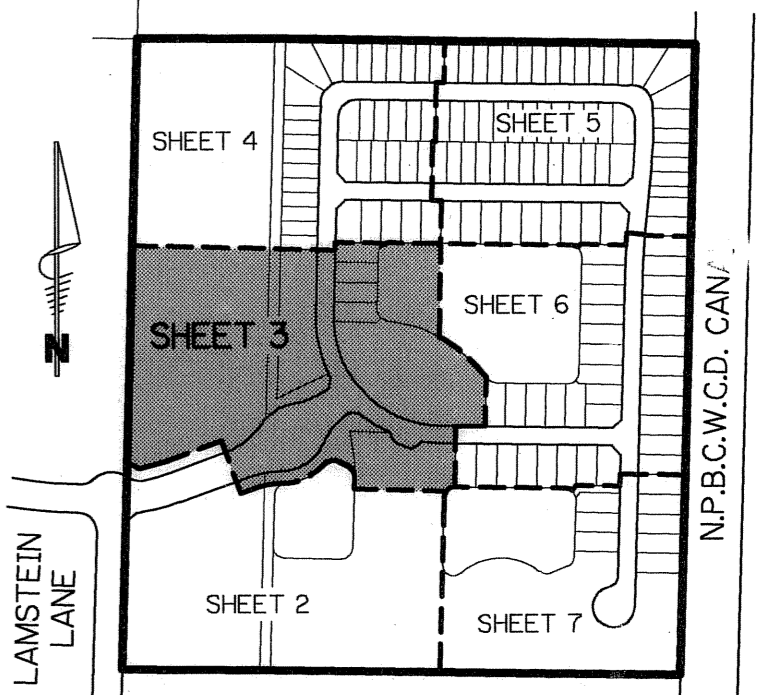
A PARCEL OF LAND IN SECTIONS 35 AND 36, TOWNSHIP 43 SOUTH, RANGE 41 EAST,
VILLAGE OF ROYAL PALM BEACH, PALM BEACH COUNTY, FLORIDA

SHEET 3 OF 7 FEBRUARY, 2005

BP BROWN & PHILLIPS, INC.
CERTIFICATE OF AUTHORIZATION # LB 6473
3969 N. HAVERHILL ROAD, SUITE 105
WEST PALM BEACH, FLORIDA 33417
561-615-3988, 561-615-3986 FAX



- LEGEND:**
- - SET PERMANENT REFERENCE MONUMENT, L.B. #6473
 - - FOUND PERMANENT REFERENCE MONUMENT, L.B. #6473
 - - SET PERMANENT CONTROL POINT, L.B. #6473
 - - FOUND PERMANENT CONTROL POINT, L.B. #6473
 - ∠ - CENTRAL ANGLE
 - B.E. - BUFFER EASEMENT
 - CB - CHORD BEARING
 - CH - CHORD DISTANCE
 - C.L. - CENTERLINE
 - D.B. - DEED BOOK
 - D.E. - DRAINAGE EASEMENT
 - L - ARC LENGTH
 - L.A.E. - LIMITED ACCESS EASEMENT
 - L.M.A.E. - LAKE MAINTENANCE ACCESS EASEMENT
 - L.M.E. - LAKE MAINTENANCE EASEMENT
 - N.P.B.C.W.C.D. - NORTHERN PALM BEACH COUNTY WATER CONTROL DISTRICT
 - N.R. - NOT RADIAL
 - N.T.S. - NOT TO SCALE
 - O.R.B. - OFFICIAL RECORD BOOK
 - O.E. - OVERHANG EASEMENT
 - P.B. - PLAT BOOK
 - P.C.P. - PERMANENT CONTROL POINT
 - PGS. - PAGES
 - P.O.B. - POINT OF BEGINNING
 - P.O.C. - POINT OF COMMENCEMENT
 - P.S.M. - PROFESSIONAL SURVEYOR AND MAPPER
 - R - RADIUS
 - R/W - RIGHT-OF-WAY
 - U.E. - UTILITY EASEMENT



KEY MAP
N.T.S.