

# PALMYRA ESTATES, P.U.D.

A PORTION OF TRACTS 9 AND 16, "AMENDED PLAT OF SECTION 12, TOWNSHIP 45 SOUTH,  
RANGE 42, EAST, MARY A. LYMAN ET AL" (P.B. 9, PG. 74, P.B.C.R.)  
CITY OF BOYNTON BEACH, PALM BEACH COUNTY, FLORIDA.  
SEPTEMBER 2004



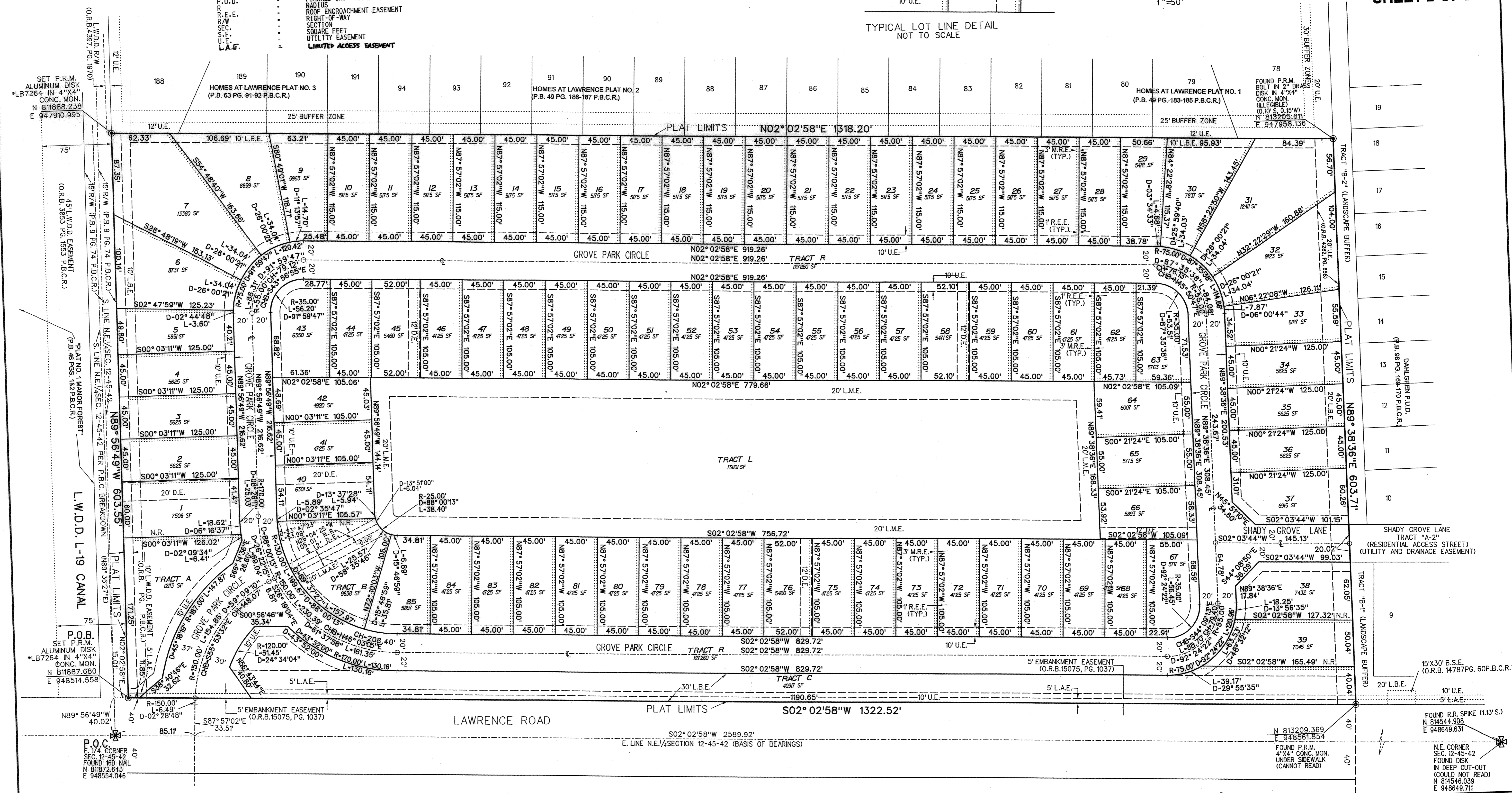
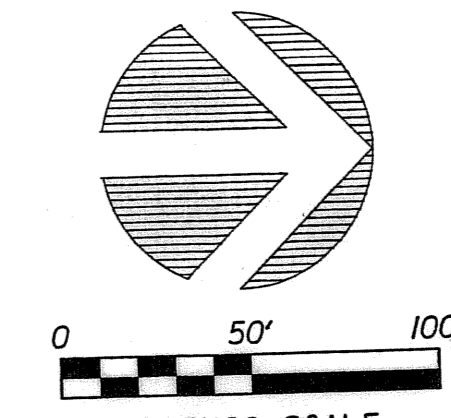
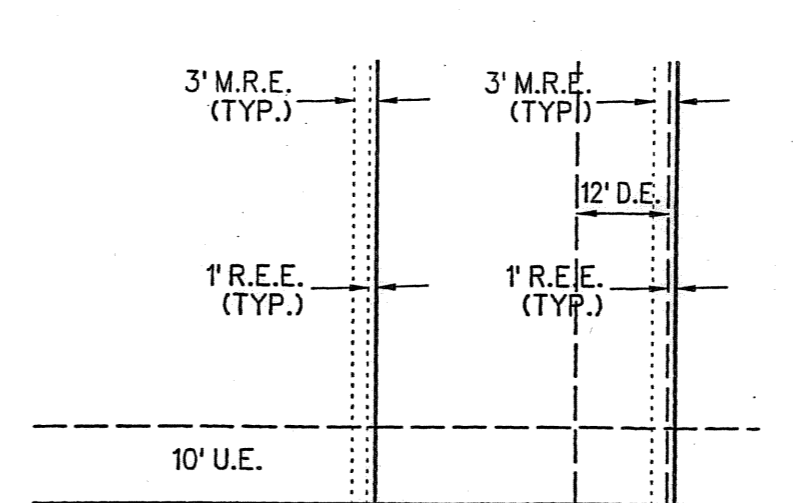
**SURVEYING & MAPPING**  
Prepared by: Jeff S. Hodapp, P.S.M.  
Certificate of Authorization No. LB7264  
951 Broken Sound Parkway, Suite 320  
Boca Raton, Florida 33487  
Tel: (561) 241-9988  
Fax: (561) 241-5182

**ABBREVIATIONS:**

- AC. ACRES
- CH. CHORD
- CHORD BEARING
- CONC. CONCRETE
- COR. CORNER
- DELTA (CENTRAL ANGLE)
- DRAINAGE EASEMENT
- IRON ROD
- IRON ROD AND CAP
- ARLENGTH
- LICENSED BUSINESS
- LANDSCAPE BUFFER EASEMENT
- LAKE MAINTENANCE EASEMENT
- LAKE MAINTENANCE ACCESS EASEMENT
- LICENSED SURVEYOR
- LAKE NORTH DRAINAGE DISTRICT
- MONUMENT
- MAINTENANCE AND REPAIR EASEMENT
- OFFICIAL RECORDS BOOK
- NON-RADIAL
- PLAT BOOK
- PALM BEACH COUNTY RECORDS
- PAGE
- PERMANENT CONTROL POINT
- POINT OF BEGINNING
- POINT OF COMMENCEMENT
- PERMANENT REFERENCE MONUMENT
- PROFESSIONAL SURVEYOR & MAPPER
- PLANNED UNIT DEVELOPMENT
- RADIUS
- ROOF ENCROACHMENT EASEMENT
- RIGHT-OF-WAY
- SECTION
- SQUARE FEET
- UTILITY EASEMENT
- L.A.E. LIMITED ACCESS EASEMENT

**LEGEND:**

- SET P.R.M. (UNLESS OTHERWISE NOTED)-ALUMINUM DISK STAMPED "LB7264 IN 4" X 4" CONC. MON.
- ⊙ P.C.P. CENTERLINE



FOUND R.R. SPIKE (1.13' S.)  
N 814544.308  
E 948649.631

N.E. CORNER  
SEC. 12-45-42  
FOUND DISK  
IN DEEP CUT-OUT  
(COULD NOT READ)  
N 814546.039  
E 948649.711