

PERIMETER

SURVEYING & MAPPING
 Certificate of Authorization No. LB7264
 Prepared by: Jeff S. Hodapp, P.S.M.
 951 Broken Sound Parkway, Suite 320
 Boca Raton, Florida 33487
 Tel: (561) 241-9988
 Fax: (561) 241-5182

ABBREVIATIONS:

- CONC. CORNER
- D
- D.E.
- F.P.B.L. CO.
- I.P.
- L.R.C.
- L
- L.B.
- L.E.
- L.S.
- L.W.D.D.
- MON.
- O.R.B.
- N.R.
- P.B.
- P.B.C.B.D.
- P.B.C.R.
- PG.
- P.C.P.
- P.O.B.
- P.O.C.
- P.R.M.
- P.S.M.
- P.U.D.
- R
- R/W
- SEC.
- S.F.
- U.E.
- CONCRETE CORNER
- DELTA (CENTRAL ANGLE)
- DRAINAGE EASEMENT
- FLORIDA POWER AND LIGHT COMPANY
- IRON PIPE
- IRON ROD AND CAP
- ARCLength
- LICENSED BUSINESS
- LANDSCAPE EASEMENT
- LICENSED SURVEYOR
- LAKE WORTH DRAINAGE DISTRICT
- MONUMENT
- OFFICIAL RECORDS BOOK
- NON-RADIAL
- PLAT BOOK
- PALM BEACH COUNTY BRASS DISK
- PALM BEACH COUNTY RECORDS
- PAGE
- PERMANENT CONTROL POINT
- POINT OF BEGINNING
- POINT OF COMMENCEMENT
- PERMANENT REFERENCE MONUMENT
- PROFESSIONAL SURVEYOR & MAPPER
- PLANNED UNIT DEVELOPMENT
- RADIUS
- RIGHT-OF-WAY
- SECTION
- SQUARE FEET
- UTILITY EASEMENT

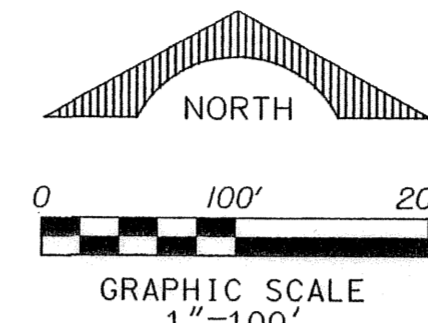
KING SOUTH, KING NORTH, NIEBEL, TOWNSEND WEST AND TOWNSEND EAST PLAT

PETITION NO. 2003-035 (COUNTRYSIDE MEADOWS AGR-PDD)
 A PORTION OF THE EAST ONE-HALF OF SECTION 14, TOWNSHIP 45 SOUTH, RANGE 41 EAST, PALM BEACH COUNTY, FLORIDA.

OCTOBER, 2004

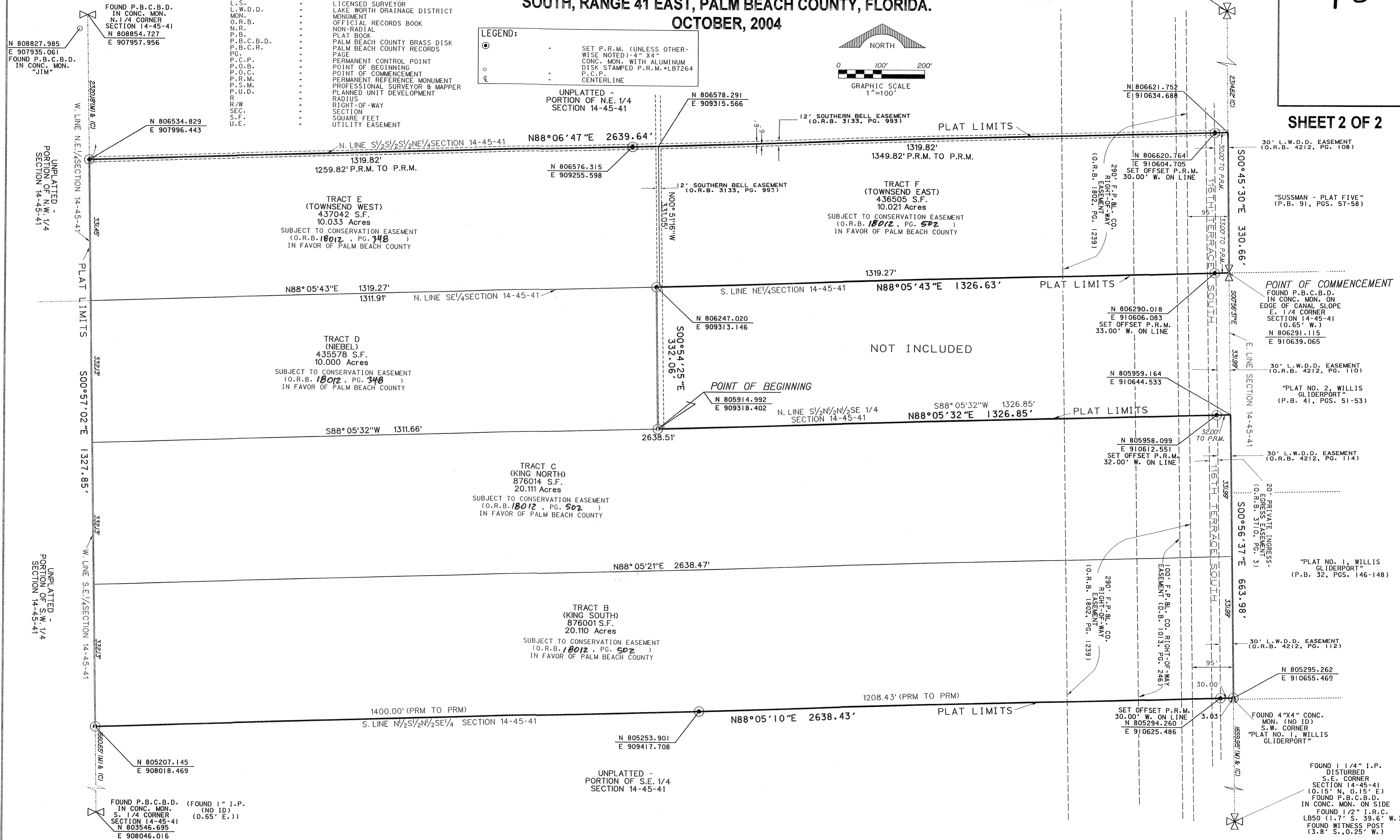
LEGEND:

- SET P.R.M. (UNLESS OTHERWISE NOTED) 4" X4" CONC. MON. WITH ALUMINUM DISK STAMPED P.R.M. #LB7264
- P.C.P.
- ⊕ CENTERLINE



48

SHEET 2 OF 2



SUBDIVISION King South, King North, Niebel, Townsend East/West Plat
 BOOK 04, PAGE 48
 FLOOD MAP # 100B
 ZONING PD
 QUAD # 04
 SE
 TAZ 742
 PUB NAME