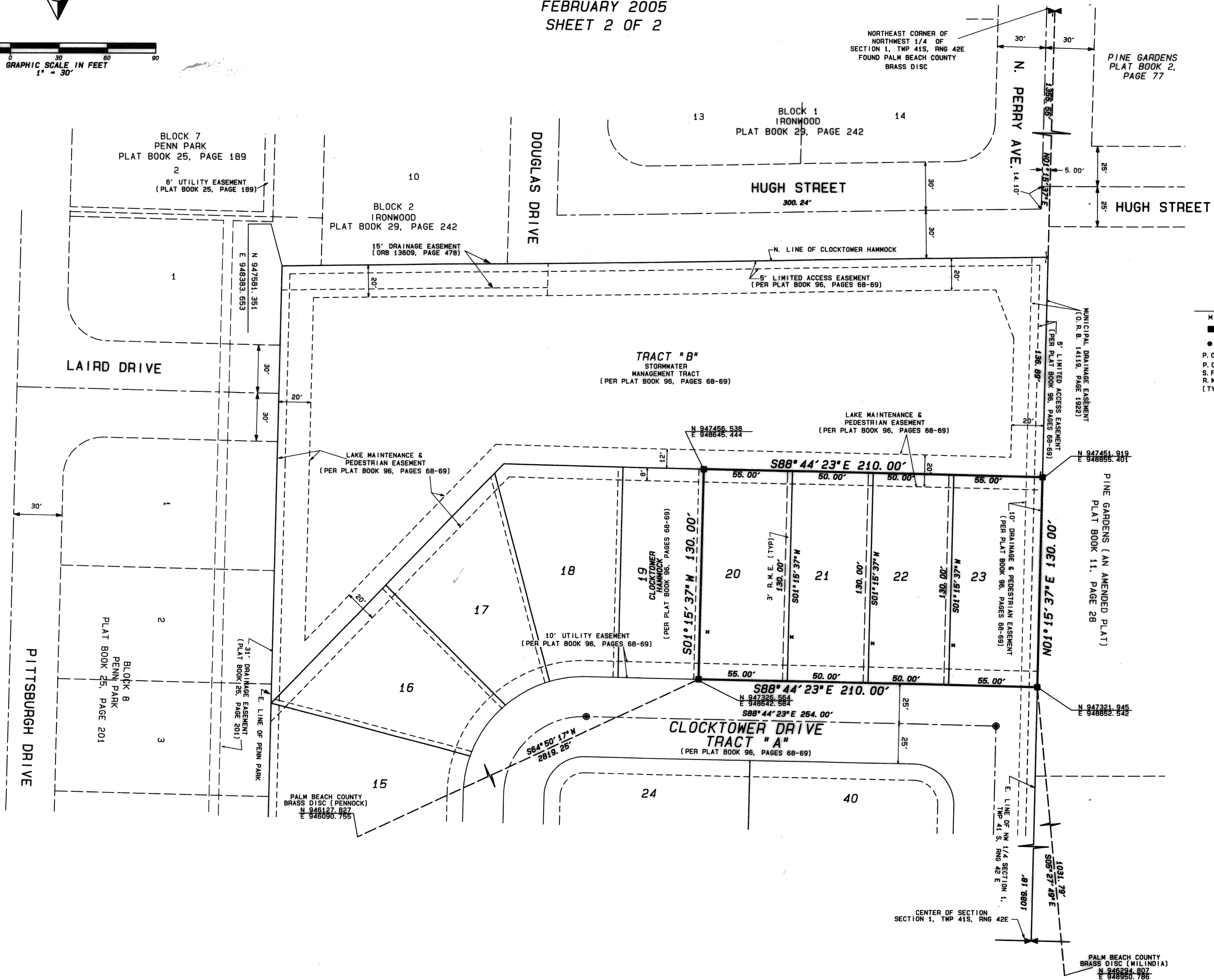
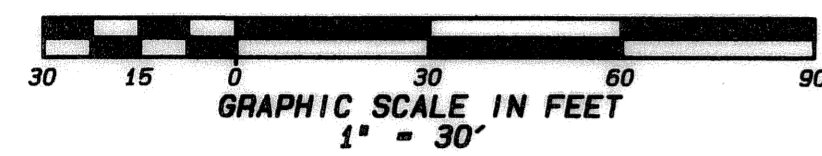
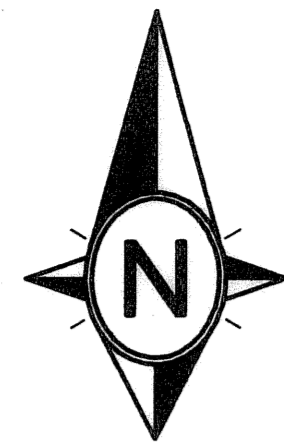


CLOCKTOWER HAMMOCK REPLAT

BEING A REPLAT OF LOTS 20, 21, 22 AND 23 OF CLOCKTOWER HAMMOCK,
AS RECORDED IN PLAT BOOK 96, PAGES 68 AND 69, SECTION 1, TOWNSHIP 41 SOUTH,
RANGE 42 EAST, TOWN OF JUPITER, PALM BEACH COUNTY, FLORIDA PUBLIC RECORDS.

FEBRUARY 2005
SHEET 2 OF 2



LEGEND

- x ZERO SIDE OF LOT (INDICATOR)
- SET PERMANENT REFERENCE MONUMENT (PRM)
- STAMPED LS # 2439
- SET PERMANENT CONTROL POINT
- STAMPED LS # 2439
- P. O. B. POINT OF BEGINNING
- P. O. C. POINT OF COMMENCEMENT
- S. F. SQUARE FEET
- R. M. E. RECIPROCAL MAINTENANCE EASEMENT
- (TYP) TYPICAL

DAILEY AND ASSOCIATES, INC.
SURVEYING & MAPPING
112 N. U.S. HIGHWAY No. 1
TEQUESTA, FLORIDA 33489
PHONE: (888) 746-8424
BUSINESS LICENSE: LB# 2799