

# MIRASOL PLAT SIX

PART OF GOLF DIGEST P.C.D.  
BEING IN SECTION 33, TOWNSHIP 41 SOUTH, RANGE 42 EAST,  
AND SECTIONS 03 AND 04, TOWNSHIP 42 SOUTH, RANGE 42 EAST,  
CITY OF PALM BEACH GARDENS, PALM BEACH COUNTY, FLORIDA  
SHEET 4 OF 21

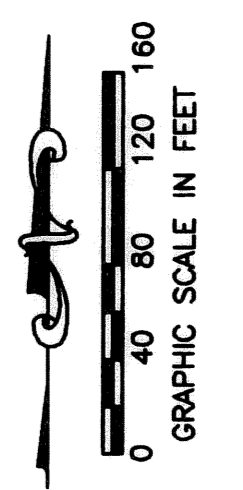
92

STATE OF FLORIDA  
COUNTY OF PALM BEACH

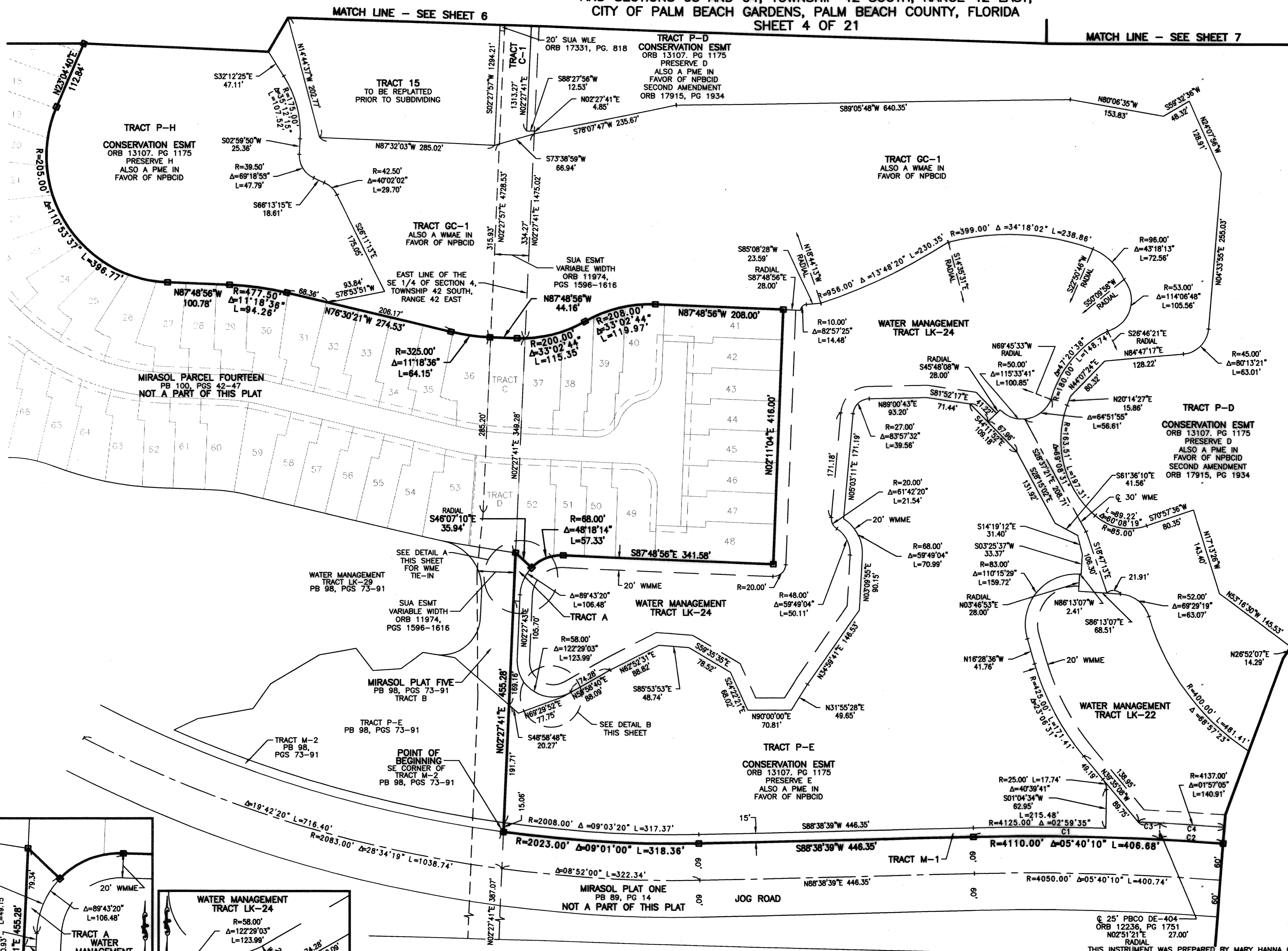
THIS PLAT WAS FILED FOR  
RECORD \_\_\_\_\_ DAY OF \_\_\_\_\_  
AD, 2005 AND DULY RECORDED  
IN PLAT BOOK \_\_\_\_\_ ON PAGES  
\_\_\_\_\_ THROUGH \_\_\_\_\_

SHARON R. BOCK, CLERK  
BY: \_\_\_\_\_ D.C.

CIRCUIT COURT SEAL



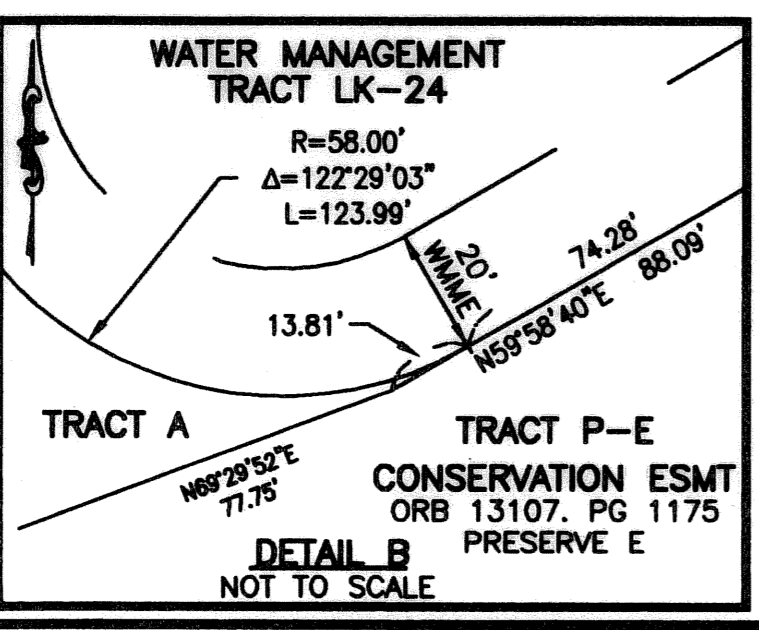
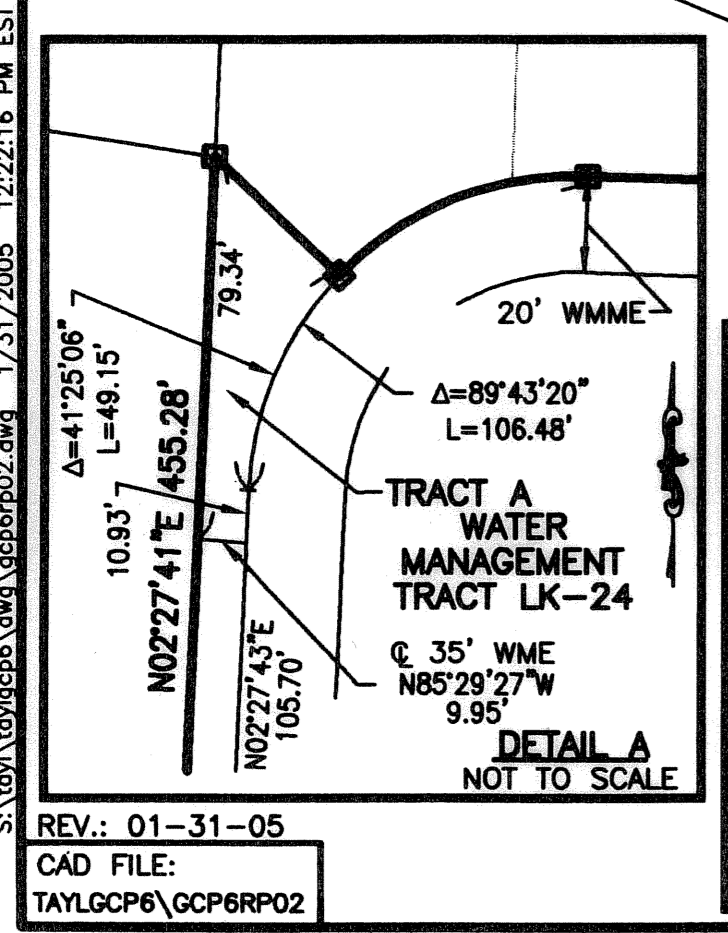
- ### LEGEND
- AE ACCESS EASEMENT
  - Δ CENTRAL (DELTA) ANGLE
  - CBE CART BRIDGE EASEMENT
  - CH CHORD
  - DE DRAINAGE EASEMENT
  - ESMT EASEMENT
  - IEE INGRESS/EGRESS EASEMENT
  - FPL FLORIDA POWER AND LIGHT
  - L ARC LENGTH
  - LE LANDSCAPE EASEMENT
  - MMA MIRASOL MASTER MAINTENANCE ASSOCIATION
  - NPBCID NORTHERN PALM BEACH COUNTY IMPROVEMENT DISTRICT OFFICIAL RECORD BOOK
  - ORB ORB PALM BEACH COUNTY
  - PBAE PUBLIC PEDESTRIAN ACCESS EASEMENT
  - PME PEDESTRIAN ACCESS EASEMENT
  - PB PLAT BOOK
  - PG(S) PLANNED COMMUNITY DEVELOPMENT PAGE(S)
  - PME PRESERVE MAINTENANCE EASEMENT
  - R RADIUS
  - SLE SEWER LINE EASEMENT
  - SUA SEACOAST UTILITY AUTHORITY UTILITY EASEMENT
  - WLE WATER LINE EASEMENT
  - WMAE WATER MANAGEMENT ACCESS EASEMENT
  - WME WATER MANAGEMENT EASEMENT
  - WMAE WATER MANAGEMENT MAINTENANCE EASEMENT
  - CENTERLINE
  - PERMANENT REFERENCE MONUMENT SET LB-048 (4"x4" CONCRETE)
  - PERMANENT REFERENCE MONUMENT FOUND LB-048 (4"x4" CONCRETE) UNLESS OTHERWISE NOTED
  - WITNESS MONUMENT SET LB-048 (4"x4" CONCRETE)



MATCH LINE - SEE SHEET 5

MATCH LINE - SEE SHEET 6

MATCH LINE - SEE SHEET 7



BOUNDARY COURSES			
CURVE	RADIUS	CENTRAL ANGLE	ARC LENGTH
C1	4110.00'	4°12'41"	302.10'
C2	4110.00'	1°27'28"	104.57'
C3	4137.00'	0°29'37"	35.64'
C4	4137.00'	1°27'28"	105.26'

© 25' PBCO DE-404  
ORB 12236, PG 1751  
NO251'21"E 27.00'

THIS INSTRUMENT WAS PREPARED BY MARY HANNA CLODFELTER, P.S.M. IN THE OFFICES OF MOCK, ROOS & ASSOCIATES, INC., 5720 CORPORATE WAY, WEST PALM BEACH, FLORIDA 33407.

SCALE:  
1" = 80'

FLORIDA L.B. NO. 48

**MOCK ROOS**  
ENGINEERS, ARCHITECTS, PLANNERS

5720 Corporate Way, West Palm Beach, Florida 33407  
(561) 683-3113, fax 478-7248

SHEET 4 OF 21

**MIRASOL PLAT SIX**  
PART OF GOLF DIGEST P.C.D.  
BEING IN SECTION 33,  
TOWNSHIP 41 SOUTH, RANGE 42 EAST,  
AND IN SECTIONS 03 AND 04,  
TOWNSHIP 42 SOUTH, RANGE 42 EAST,  
CITY OF PALM BEACH GARDENS,  
PALM BEACH COUNTY, FLORIDA

REV: 01-31-05  
CAD FILE:  
TAYLGP6\GCP6RPO2