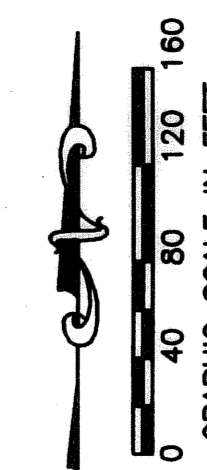
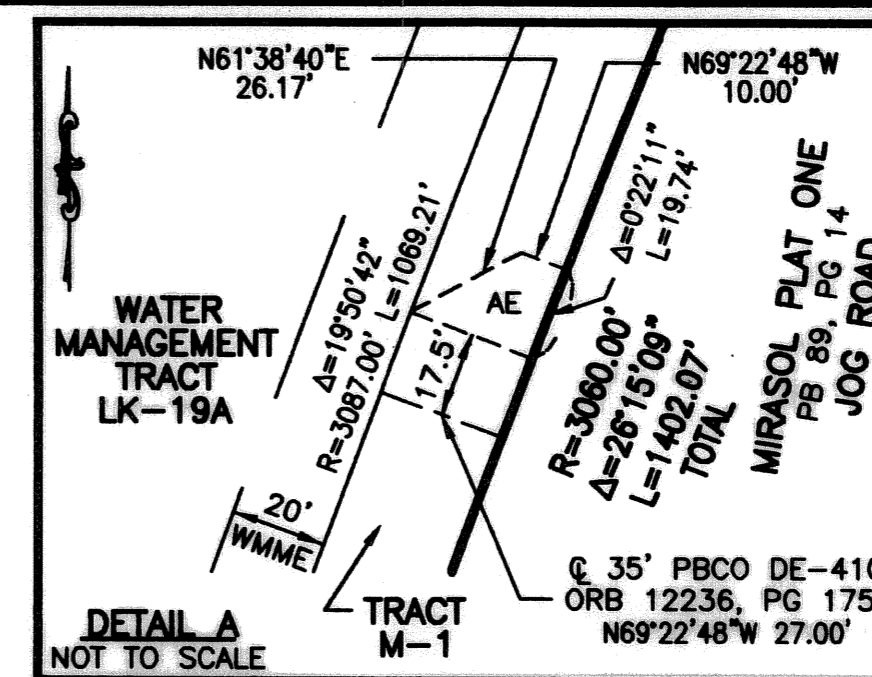


# MIRASOL PLAT SIX

PART OF GOLF DIGEST P.C.D.  
 BEING IN SECTION 33, TOWNSHIP 41 SOUTH, RANGE 42 EAST,  
 AND SECTIONS 03 AND 04, TOWNSHIP 42 SOUTH, RANGE 42 EAST,  
 CITY OF PALM BEACH GARDENS, PALM BEACH COUNTY, FLORIDA  
 SHEET 5 OF 21



**93**

STATE OF FLORIDA  
 COUNTY OF PALM BEACH

THIS PLAT WAS FILED FOR  
 RECORD \_\_\_\_\_ DAY OF \_\_\_\_\_  
 AD, 2005 AND DULY RECORDED  
 IN PLAT BOOK \_\_\_\_\_ ON PAGES  
 \_\_\_\_\_ THROUGH \_\_\_\_\_

SHARON R. BOCK, CLERK  
 BY: \_\_\_\_\_, D.C.

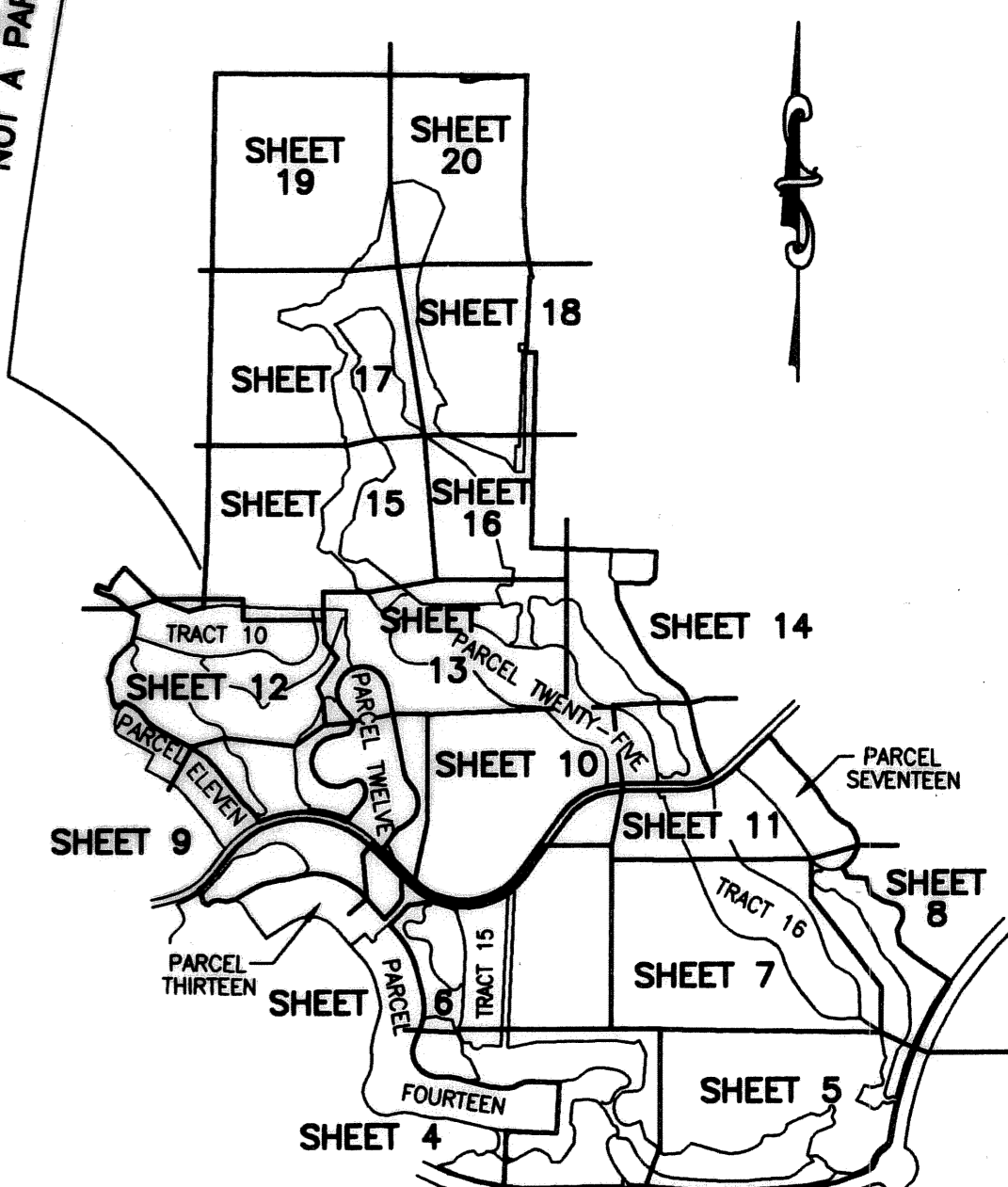
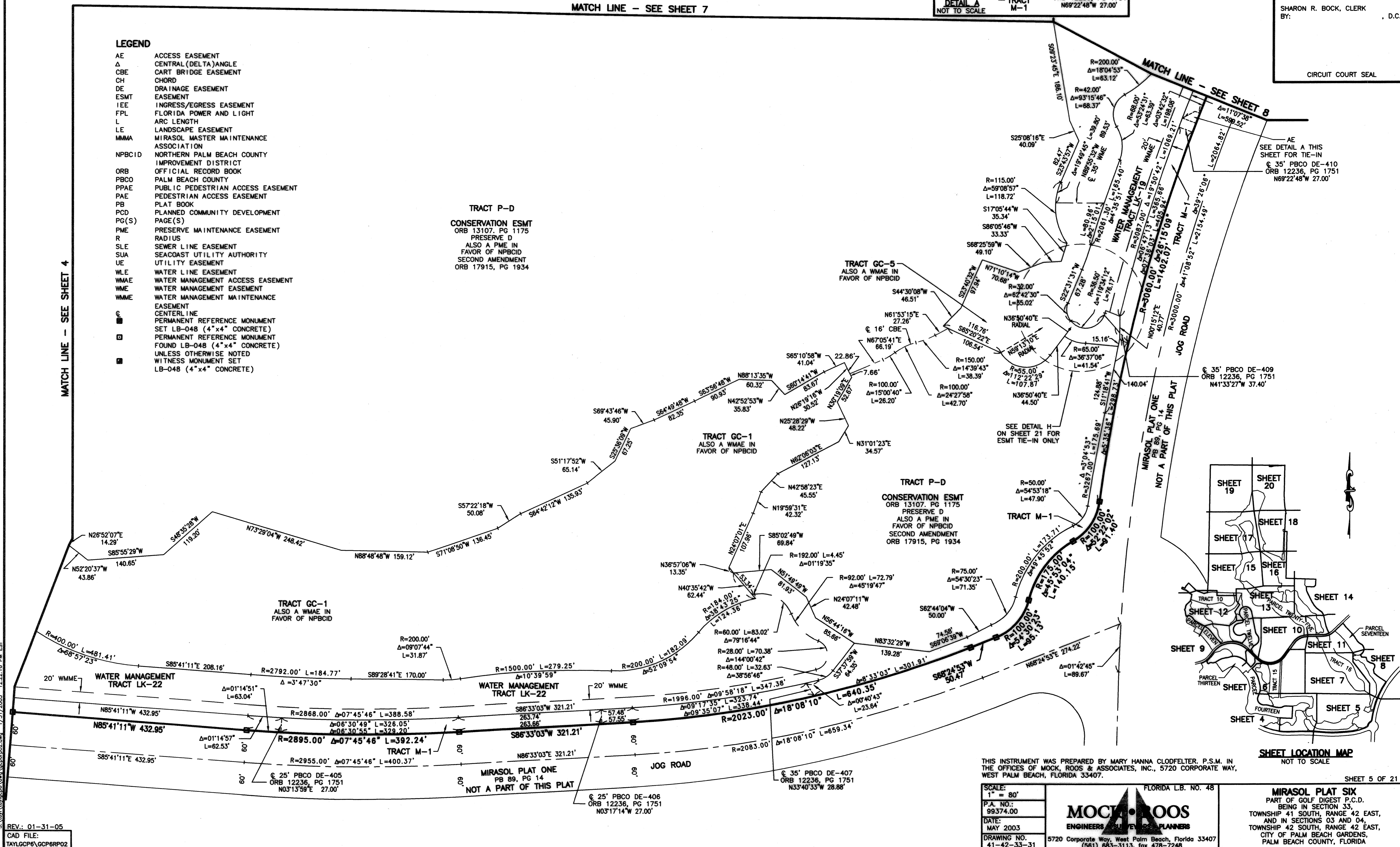
MATCH LINE - SEE SHEET 7

### LEGEND

- AE ACCESS EASEMENT
- Δ CENTRAL (DELTA) ANGLE
- CBE CART BRIDGE EASEMENT
- CH CHORD
- DE DRAINAGE EASEMENT
- ESMT EASEMENT
- IEE INGRESS/EGRESS EASEMENT
- FPL FLORIDA POWER AND LIGHT
- L ARC LENGTH
- LE LANDSCAPE EASEMENT
- MMMA MIRASOL MASTER MAINTENANCE ASSOCIATION
- NPBCID NORTHERN PALM BEACH COUNTY IMPROVEMENT DISTRICT
- ORB OFFICIAL RECORD BOOK
- PBCO PALM BEACH COUNTY
- PPAE PUBLIC PEDESTRIAN ACCESS EASEMENT
- PAE PEDESTRIAN ACCESS EASEMENT
- PB PLAT BOOK
- PCD PLANNED COMMUNITY DEVELOPMENT
- PG(S) PAGE(S)
- PME PRESERVE MAINTENANCE EASEMENT
- R RADIUS
- SLE SEWER LINE EASEMENT
- SUA SEACOAST UTILITY AUTHORITY
- UE UTILITY EASEMENT
- WLE WATER LINE EASEMENT
- WMAE WATER MANAGEMENT ACCESS EASEMENT
- WME WATER MANAGEMENT EASEMENT
- WMMMA WATER MANAGEMENT MAINTENANCE EASEMENT
- CENTERLINE
- PERMANENT REFERENCE MONUMENT SET LB-048 (4" x 4" CONCRETE)
- PERMANENT REFERENCE MONUMENT FOUND LB-048 (4" x 4" CONCRETE)
- UNLESS OTHERWISE NOTED WITNESS MONUMENT SET LB-048 (4" x 4" CONCRETE)

TRACT P-D  
 CONSERVATION ESMT  
 ORB 13107, PG 1175  
 PRESERVE D  
 ALSO A PME IN  
 FAVOR OF NPBCID  
 SECOND AMENDMENT  
 ORB 17915, PG 1934

MATCH LINE - SEE SHEET 4



THIS INSTRUMENT WAS PREPARED BY MARY HANNA CLODFELTER, P.S.M. IN THE OFFICES OF MOCK, ROOS & ASSOCIATES, INC., 5720 CORPORATE WAY, WEST PALM BEACH, FLORIDA 33407.

SCALE: 1" = 80'

P.A. NO.: 99374.00

DATE: MAY 2003

DRAWING NO. 41-42-33-31

FLORIDA L.B. NO. 48

**MOCK ROOS**  
 ENGINEERS AND PLANNERS

5720 Corporate Way, West Palm Beach, Florida 33407  
 (561) 683-3113, fax 478-7248

**MIRASOL PLAT SIX**  
 PART OF GOLF DIGEST P.C.D.  
 BEING IN SECTION 33,  
 TOWNSHIP 41 SOUTH, RANGE 42 EAST,  
 AND IN SECTIONS 03 AND 04,  
 TOWNSHIP 42 SOUTH, RANGE 42 EAST,  
 CITY OF PALM BEACH GARDENS,  
 PALM BEACH COUNTY, FLORIDA

S:\New\Projects\Golf Digest\GDP6\GCP6R02.dwg 1/21/2005 12:22:16 PM EST

REV.: 01-31-05  
 CAD FILE:  
 TAYLOR\GCP6\GCP6R02