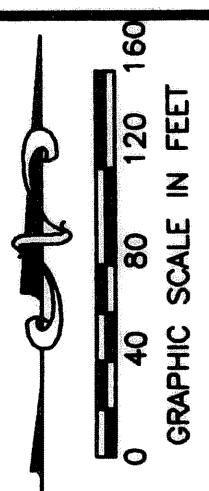


MIRASOL PLAT SIX

PART OF GOLF DIGEST P.C.D.
 BEING IN SECTION 33, TOWNSHIP 41 SOUTH, RANGE 42 EAST,
 AND SECTIONS 03 AND 04, TOWNSHIP 42 SOUTH, RANGE 42 EAST,
 CITY OF PALM BEACH GARDENS, PALM BEACH COUNTY, FLORIDA
 SHEET 6 OF 21

94

STATE OF FLORIDA
 COUNTY OF PALM BEACH
 THIS PLAT WAS FILED FOR
 RECORD _____ DAY OF _____
 AD. 2005 AND DULY RECORDED
 IN PLAT BOOK _____ ON PAGES
 THROUGH _____
 SHARON R. BOCK, CLERK
 BY: _____, D.C.



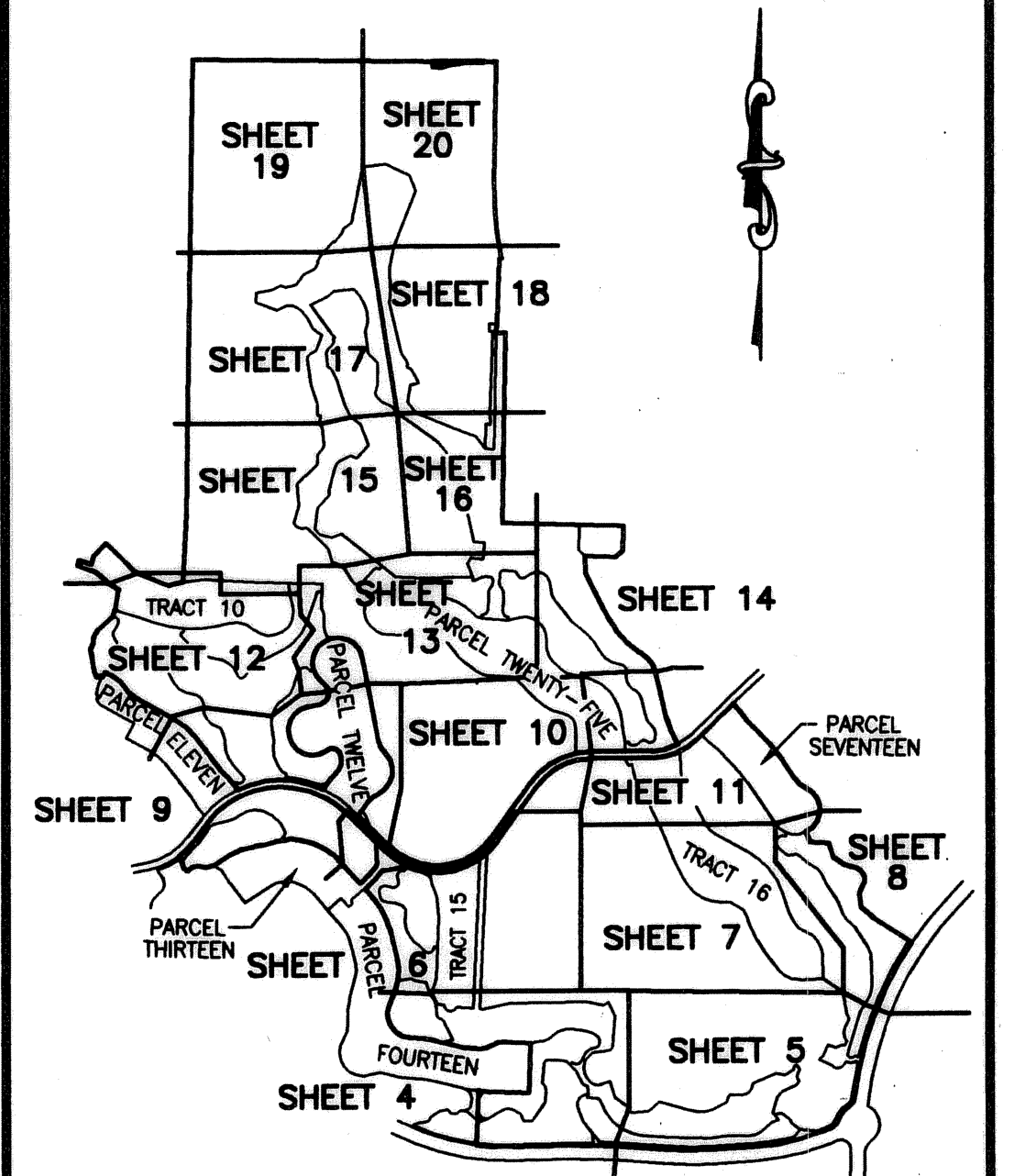
MATCH LINE
 SEE SHEET 11

MATCH LINE - SEE SHEET 7

MATCH LINE - SEE SHEET 10

LEGEND

- AE ACCESS EASEMENT
- Δ CENTRAL (DELTA) ANGLE
- CBE CART BRIDGE EASEMENT
- CH CHORD
- DE DRAINAGE EASEMENT
- ESMT EASEMENT
- IEE INGRESS/EGRESS EASEMENT
- FPL FLORIDA POWER AND LIGHT
- L ARC LENGTH
- LE LANDSCAPE EASEMENT
- MMA MIRASOL MASTER MAINTENANCE ASSOCIATION
- NPBCID NORTHERN PALM BEACH COUNTY IMPROVEMENT DISTRICT OFFICIAL RECORD BOOK
- ORB ORB PUBLIC BEACH COUNTY
- PFAE PUBLIC PEDESTRIAN ACCESS EASEMENT
- PFAE PEDESTRIAN ACCESS EASEMENT
- PCD PLANNED COMMUNITY DEVELOPMENT PAGE(S)
- PG(S) PRESERVE MAINTENANCE EASEMENT
- PME RADIUS
- SLE SEWER LINE EASEMENT
- SUA SEACOAST UTILITY AUTHORITY
- UE UTILITY EASEMENT
- WLE WATER LINE EASEMENT
- WMAE WATER MANAGEMENT ACCESS EASEMENT
- WME WATER MANAGEMENT EASEMENT
- WMME WATER MANAGEMENT MAINTENANCE EASEMENT
- CENTER LINE
- PERMANENT REFERENCE MONUMENT SET LB-048 (4"x4" CONCRETE)
- PERMANENT REFERENCE MONUMENT FOUNDED LB-048 (4"x4" CONCRETE) UNLESS OTHERWISE NOTED
- WITNESS MONUMENT SET LB-048 (4"x4" CONCRETE)



SHEET LOCATION MAP
 NOT TO SCALE

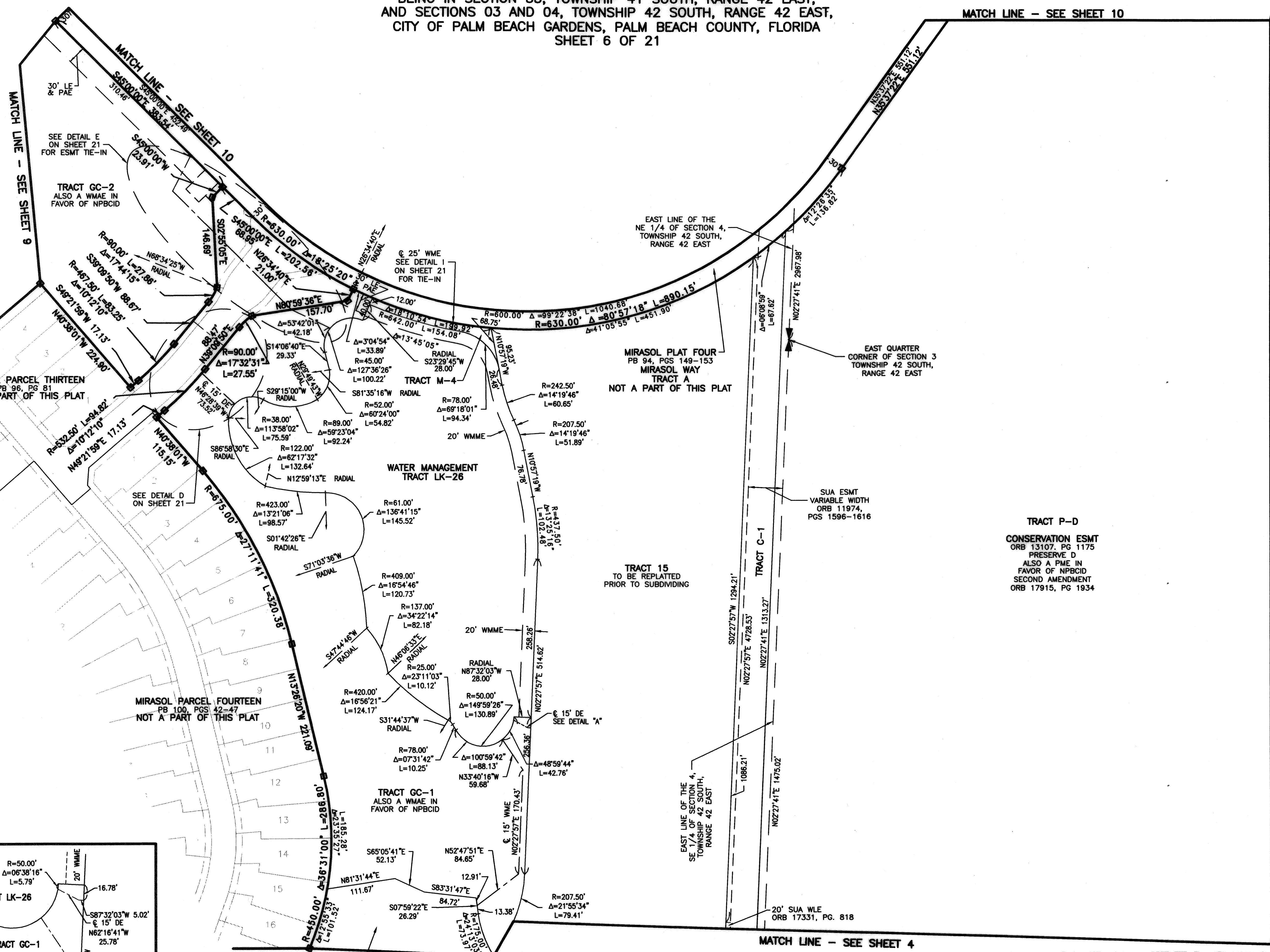
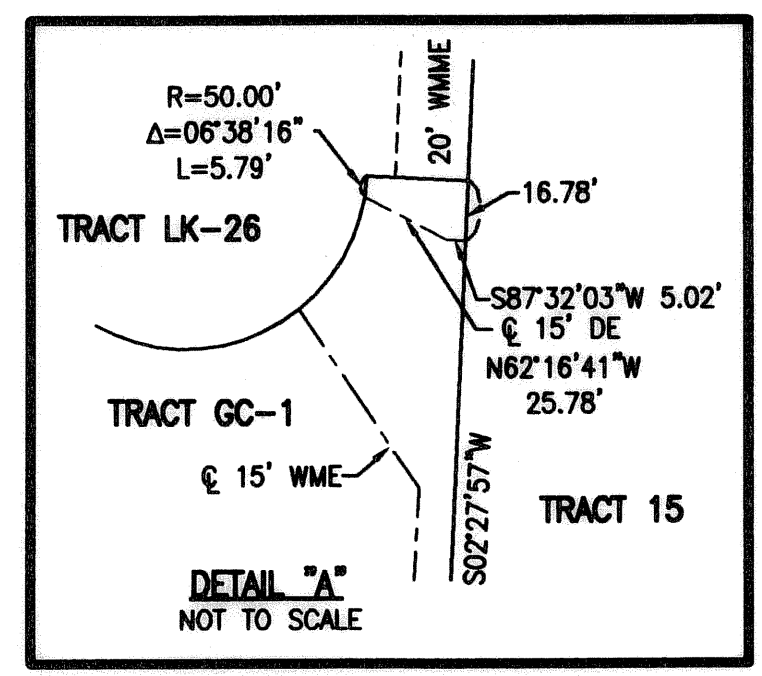
THIS INSTRUMENT WAS PREPARED BY MARY HANNA CLODFELTER, P.S.M. IN THE OFFICES OF MOCK, ROOS & ASSOCIATES, INC., 5720 CORPORATE WAY, WEST PALM BEACH, FLORIDA 33407.

SCALE: 1" = 80'	FLORIDA L.B. NO. 48
P.A. NO.: 99374.00	MOCK ROOS ENGINEERS SURVEYORS PLANNERS
DATE: MAY 2003	
DRAWING NO. 41-42-33-31	5720 Corporate Way, West Palm Beach, Florida 33407 (561) 663-3113, fax 478-7248

MIRASOL PLAT SIX
 PART OF GOLF DIGEST P.C.D.
 BEING IN SECTION 33,
 TOWNSHIP 41 SOUTH, RANGE 42 EAST,
 AND IN SECTIONS 03 AND 04,
 TOWNSHIP 42 SOUTH, RANGE 42 EAST,
 CITY OF PALM BEACH GARDENS,
 PALM BEACH COUNTY, FLORIDA

S:\town\mays\p02\p02.dwg 1/31/2005 12:22:16 PM EST

REV: 01-31-05
 CAD FILE:
 TAYLGP6\GCP6RPO2



MATCH LINE - SEE SHEET 9

MIRASOL PARCEL THIRTEEN
 PB 96, PG 81
 NOT A PART OF THIS PLAT

MIRASOL PARCEL FOURTEEN
 PB 100, PGS 42-47
 NOT A PART OF THIS PLAT

MIRASOL PLAT FOUR
 PB 94, PGS 149-153
 MIRASOL WAY
 TRACT A
 NOT A PART OF THIS PLAT

TRACT 15
 TO BE REPLATTED
 PRIOR TO SUBDIVIDING

TRACT P-D
 CONSERVATION ESMT
 ORB 13107, PG 1175
 PRESERVE D
 ALSO A PME IN
 FAVOR OF NPBCID
 SECOND AMENDMENT
 ORB 17915, PG 1934

MATCH LINE - SEE SHEET 4