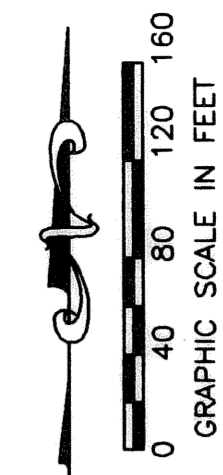


# MIRASOL PLAT SIX

PART OF GOLF DIGEST P.C.D.  
 BEING IN SECTION 33, TOWNSHIP 41 SOUTH, RANGE 42 EAST,  
 AND SECTIONS 03 AND 04, TOWNSHIP 42 SOUTH, RANGE 42 EAST,  
 CITY OF PALM BEACH GARDENS, PALM BEACH COUNTY, FLORIDA  
 SHEET 18 OF 21



# 106

STATE OF FLORIDA  
 COUNTY OF PALM BEACH  
 THIS PLAT WAS FILED FOR  
 RECORD \_\_\_\_\_ DAY OF \_\_\_\_\_  
 AD, 2005 AND DULY RECORDED  
 IN PLAT BOOK \_\_\_\_\_ ON PAGES  
 THROUGH \_\_\_\_\_

SHARON R. BOCK, CLERK  
 BY: \_\_\_\_\_ D.C.

CIRCUIT COURT SEAL

MATCH LINE - SEE SHEET 20

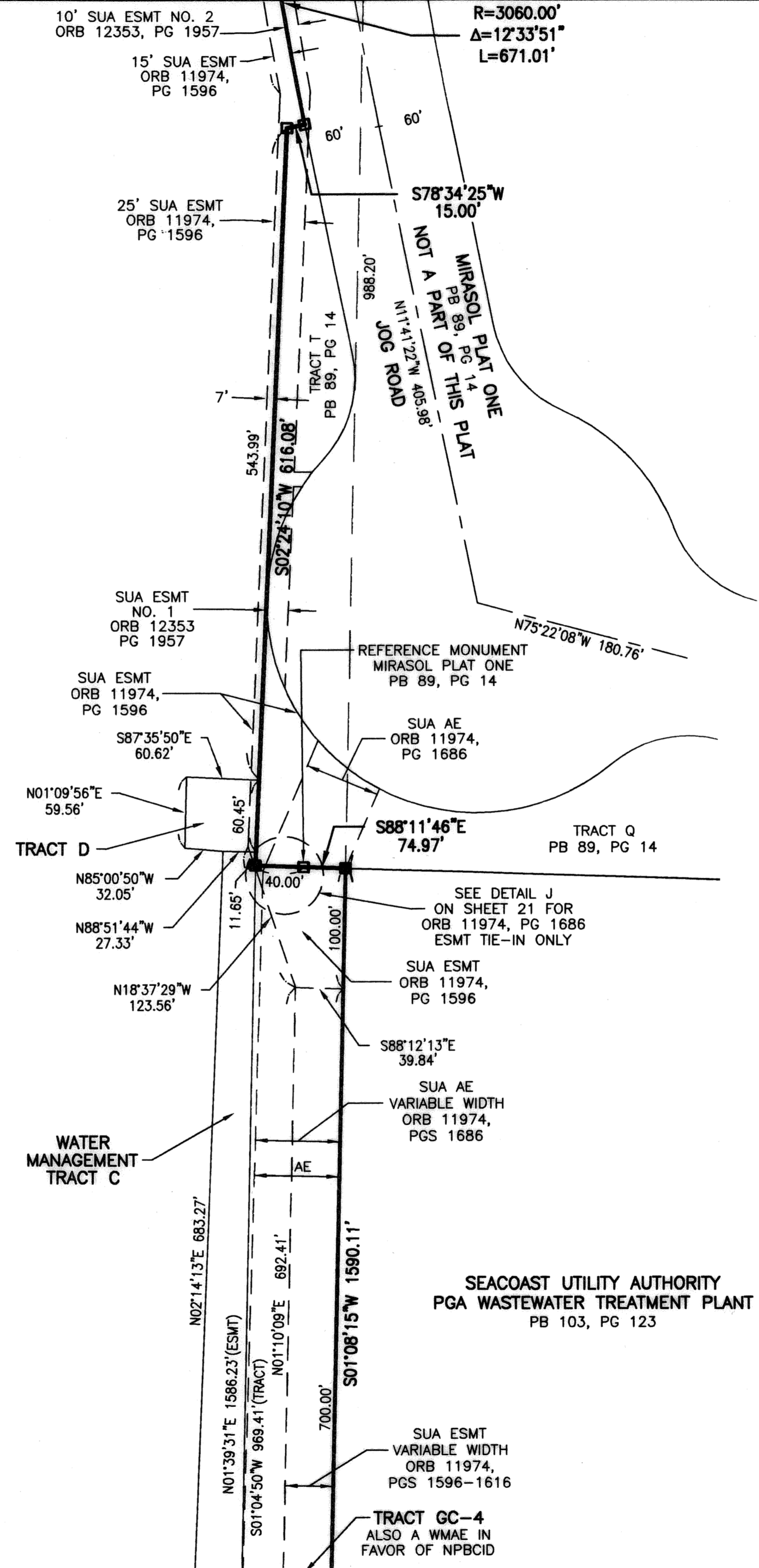
### LEGEND

- AE ACCESS EASEMENT
- A CENTRAL (DELTA) ANGLE
- CBE CART BRIDGE EASEMENT
- CH CHORD
- DE DRAINAGE EASEMENT
- ESMT EASEMENT
- IEE INGRESS/EGRESS EASEMENT
- FPL FLORIDA POWER AND LIGHT
- L ARC LENGTH
- LE LANDSCAPE EASEMENT
- MMA MIRASOL MASTER MAINTENANCE ASSOCIATION
- NPBCID NORTHERN PALM BEACH COUNTY IMPROVEMENT DISTRICT OFFICIAL RECORD BOOK
- ORB ORB PALM BEACH COUNTY
- PBCO PUBLIC PEDESTRIAN ACCESS EASEMENT
- PPAE PEDESTRIAN ACCESS EASEMENT
- PAE PLAT BOOK
- PCD PLANNED COMMUNITY DEVELOPMENT
- PG(S) PAGE(S)
- PME PRESERVE MAINTENANCE EASEMENT
- R RADIUS
- SLE SEWER LINE EASEMENT
- SUA SEACOAST UTILITY AUTHORITY UTILITY EASEMENT
- UE WATER LINE EASEMENT
- WLE WATER MANAGEMENT ACCESS EASEMENT
- WMAE WATER MANAGEMENT EASEMENT
- WME WATER MANAGEMENT MAINTENANCE EASEMENT
- WMM CENTERLINE
- PERMANENT REFERENCE MONUMENT SET LB-048 (4"x4" CONCRETE)
- PERMANENT REFERENCE MONUMENT FOUND LB-048 (4"x4" CONCRETE)
- UNLESS OTHERWISE NOTED WITNESS MONUMENT SET LB-048 (4"x4" CONCRETE)

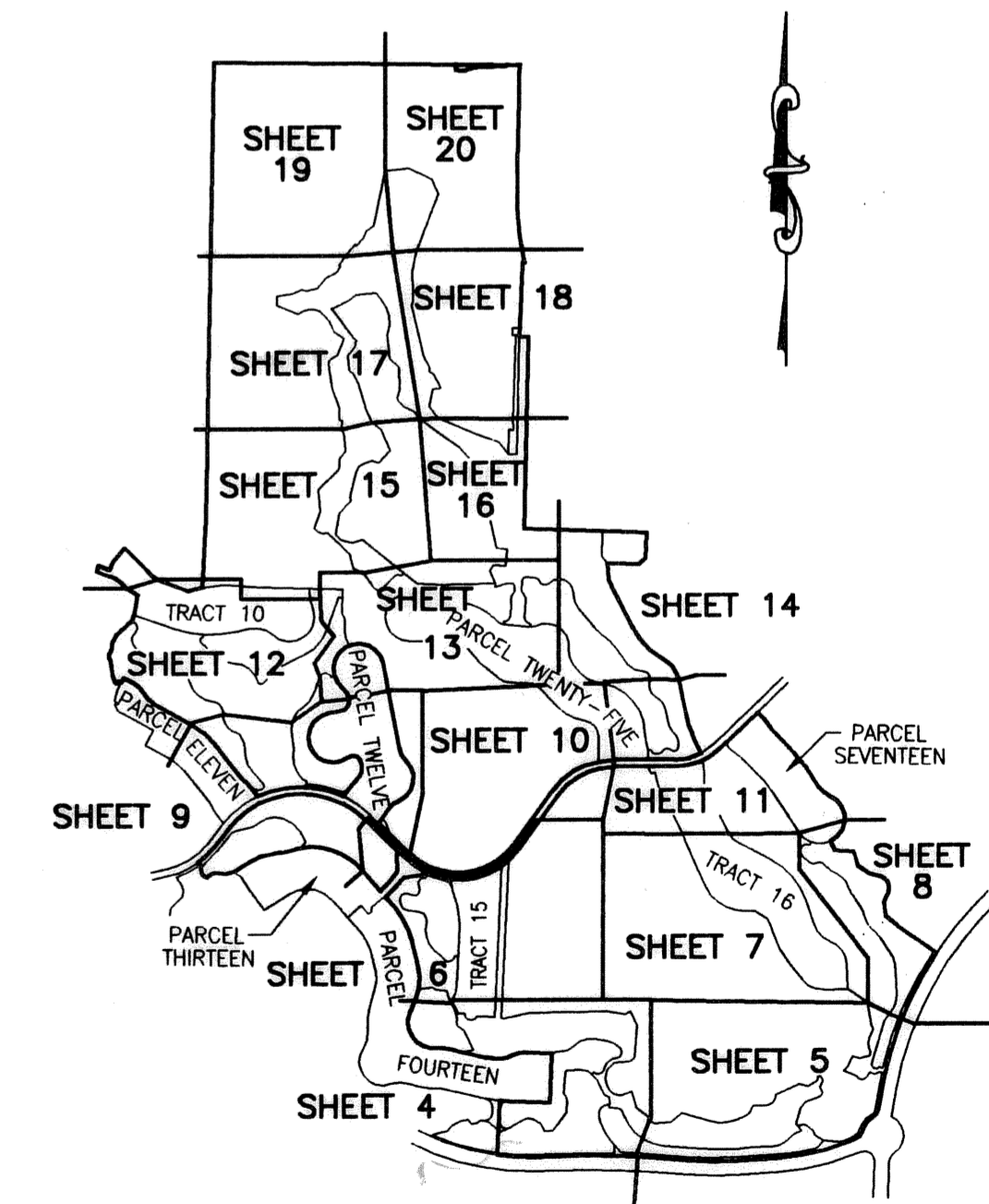
**TRACT P-A**  
 CONSERVATION ESMT  
 ORB 13107, PG 1175  
 ORB 14243, PG 768  
 PARTIAL RELEASE PER  
 ORB 14243, PG 807  
 PART OF PRESERVE A  
 ALSO A PME IN  
 FAVOR OF NPBCID  
 SECOND AMENDMENT  
 ORB 17915, PG 1934

MATCH LINE - SEE SHEET 17

**TRACT GC-4**  
 ALSO A WMAE IN  
 FAVOR OF NPBCID



MATCH LINE - SEE SHEET 16



THIS INSTRUMENT WAS PREPARED BY MARY HANNA CLODFELTER, P.S.M. IN THE OFFICES OF MOCK, ROOS & ASSOCIATES, INC., 5720 CORPORATE WAY, WEST PALM BEACH, FLORIDA 33407.

SCALE:  
1" = 80'  
P.A. NO.:  
99374.00  
DATE:  
MAY 2003  
DRAWING NO.  
41-42-33-31

FLORIDA L.B. NO. 48  
**MOCK • ROOS**  
 ENGINEERS • SURVEYORS • PLANNERS  
 5720 Corporate Way, West Palm Beach, Florida 33407  
 (561) 683-3113, fax 478-7248

SHEET 18 OF 21  
**MIRASOL PLAT SIX**  
 PART OF GOLF DIGEST P.C.D.  
 BEING IN SECTION 33,  
 TOWNSHIP 41 SOUTH, RANGE 42 EAST,  
 AND IN SECTIONS 03 AND 04,  
 TOWNSHIP 42 SOUTH, RANGE 42 EAST,  
 CITY OF PALM BEACH GARDENS,  
 PALM BEACH COUNTY, FLORIDA

S:\town\lbg\pdp6\lbg\_gcp6r02.dwg 1/31/2005 12:22:16 PM EST

REV.: 01-31-05  
 CAD FILE:  
 TAYLGP6\GCP6R02