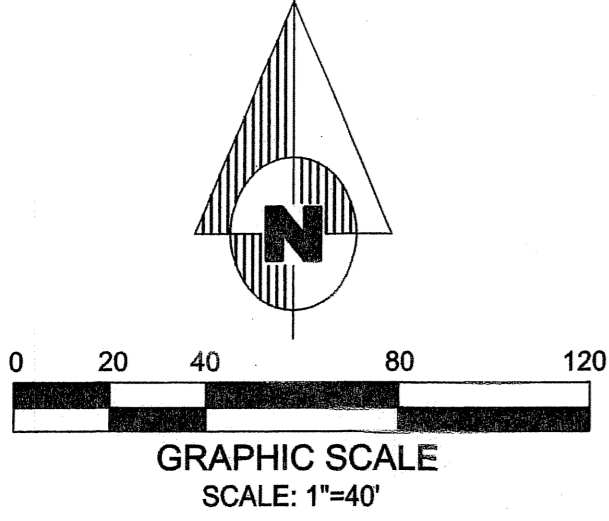
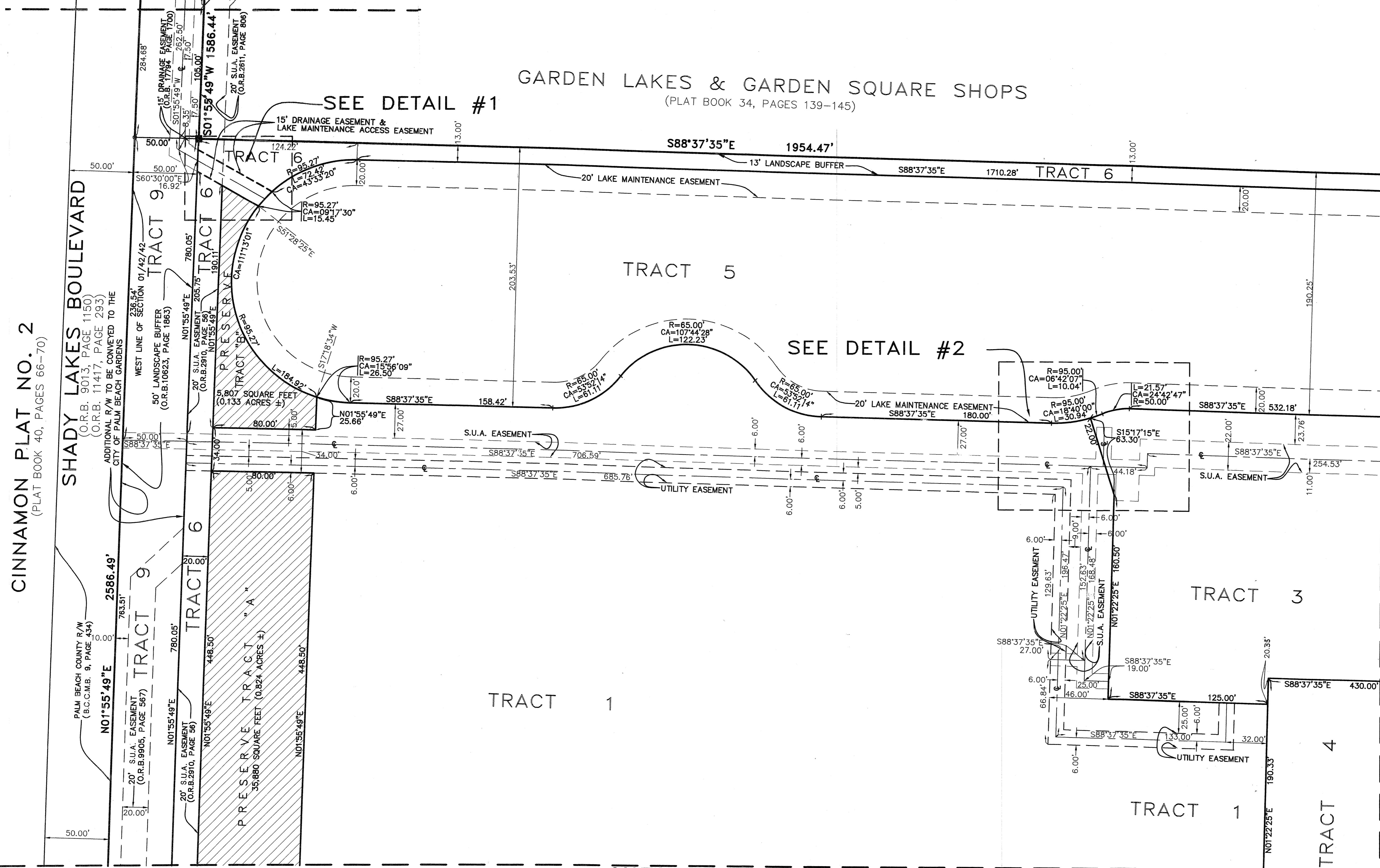


BORLAND CENTER

IN SECTION 1, TOWNSHIP 42 SOUTH, RANGE 42 EAST
 CITY OF PALM BEACH GARDENS, PALM BEACH COUNTY, FLORIDA
 NOVEMBER 2004
 SHEET 3 OF 8 SHEETS



MATCH LINE - SEE PANEL A OF SHEET 7 OF 8



CINNAMON PLAT NO. 2
 (PLAT BOOK 40, PAGES 66-70)

SHADY LAKES BOULEVARD
 (O.R.B. 9013, PAGE 1150)
 (O.R.B. 11417, PAGE 293)
 ADDITIONAL R/W TO BE CONVEYED TO THE
 CITY OF PALM BEACH GARDENS

WEST LINE OF SECTION 01/42/42
 50' LANDSCAPE BUFFER
 (O.R.B. 10623, PAGE 1865)

PALM BEACH COUNTY R/W
 (B.C.C.M.B. 9, PAGE 334)
 N01°55'49"E 2586.49'

20' S.U.A. EASEMENT
 (O.R.B. 9905, PAGE 567)

20' S.U.A. EASEMENT
 (O.R.B. 2910, PAGE 56)

PRESERVE TRACT "A"
 35,880 SQUARE FEET (0.824 ACRES ±)

5,807 SQUARE FEET
 (0.133 ACRES ±)

20' S.U.A. EASEMENT
 (O.R.B. 2910, PAGE 56)

20' S.U.A. EASEMENT
 (O.R.B. 2910, PAGE 56)

20' S.U.A. EASEMENT
 (O.R.B. 2910, PAGE 56)

20' S.U.A. EASEMENT
 (O.R.B. 2910, PAGE 56)

20' S.U.A. EASEMENT
 (O.R.B. 2910, PAGE 56)

20' S.U.A. EASEMENT
 (O.R.B. 2910, PAGE 56)

20' S.U.A. EASEMENT
 (O.R.B. 2910, PAGE 56)

20' S.U.A. EASEMENT
 (O.R.B. 2910, PAGE 56)

20' S.U.A. EASEMENT
 (O.R.B. 2910, PAGE 56)

20' S.U.A. EASEMENT
 (O.R.B. 2910, PAGE 56)

20' S.U.A. EASEMENT
 (O.R.B. 2910, PAGE 56)

20' S.U.A. EASEMENT
 (O.R.B. 2910, PAGE 56)

20' S.U.A. EASEMENT
 (O.R.B. 2910, PAGE 56)

20' S.U.A. EASEMENT
 (O.R.B. 2910, PAGE 56)

20' S.U.A. EASEMENT
 (O.R.B. 2910, PAGE 56)

20' S.U.A. EASEMENT
 (O.R.B. 2910, PAGE 56)

20' S.U.A. EASEMENT
 (O.R.B. 2910, PAGE 56)

20' S.U.A. EASEMENT
 (O.R.B. 2910, PAGE 56)

20' S.U.A. EASEMENT
 (O.R.B. 2910, PAGE 56)

20' S.U.A. EASEMENT
 (O.R.B. 2910, PAGE 56)

20' S.U.A. EASEMENT
 (O.R.B. 2910, PAGE 56)

20' S.U.A. EASEMENT
 (O.R.B. 2910, PAGE 56)

20' S.U.A. EASEMENT
 (O.R.B. 2910, PAGE 56)

20' S.U.A. EASEMENT
 (O.R.B. 2910, PAGE 56)

20' S.U.A. EASEMENT
 (O.R.B. 2910, PAGE 56)

20' S.U.A. EASEMENT
 (O.R.B. 2910, PAGE 56)

20' S.U.A. EASEMENT
 (O.R.B. 2910, PAGE 56)

20' S.U.A. EASEMENT
 (O.R.B. 2910, PAGE 56)

20' S.U.A. EASEMENT
 (O.R.B. 2910, PAGE 56)

20' S.U.A. EASEMENT
 (O.R.B. 2910, PAGE 56)

20' S.U.A. EASEMENT
 (O.R.B. 2910, PAGE 56)

20' S.U.A. EASEMENT
 (O.R.B. 2910, PAGE 56)

20' S.U.A. EASEMENT
 (O.R.B. 2910, PAGE 56)

20' S.U.A. EASEMENT
 (O.R.B. 2910, PAGE 56)

20' S.U.A. EASEMENT
 (O.R.B. 2910, PAGE 56)

20' S.U.A. EASEMENT
 (O.R.B. 2910, PAGE 56)

20' S.U.A. EASEMENT
 (O.R.B. 2910, PAGE 56)

MATCH LINE - SEE SHEET 5 OF 8

MATCH LINE - SEE SHEET 4 OF 8

STATE OF FLORIDA }
 COUNTY OF PALM BEACH } SS

THIS PLAT WAS FILED FOR
 RECORD AT _____ DAY OF
 THIS _____ A.D., 2004 AND
 DULY RECORDED IN PLAT BOOK
 _____ ON PAGES _____ AND

DOROTHY H. WILKEN, CLERK
 CIRCUIT COURT

BY: _____ DC

Dailey-Fotony, inc.
 land surveyors - planners
 5050 10th Avenue North Suite B - Lake Worth FL 33463-2062
 Phone: 561-965-8787 Fax: 561-965-8963