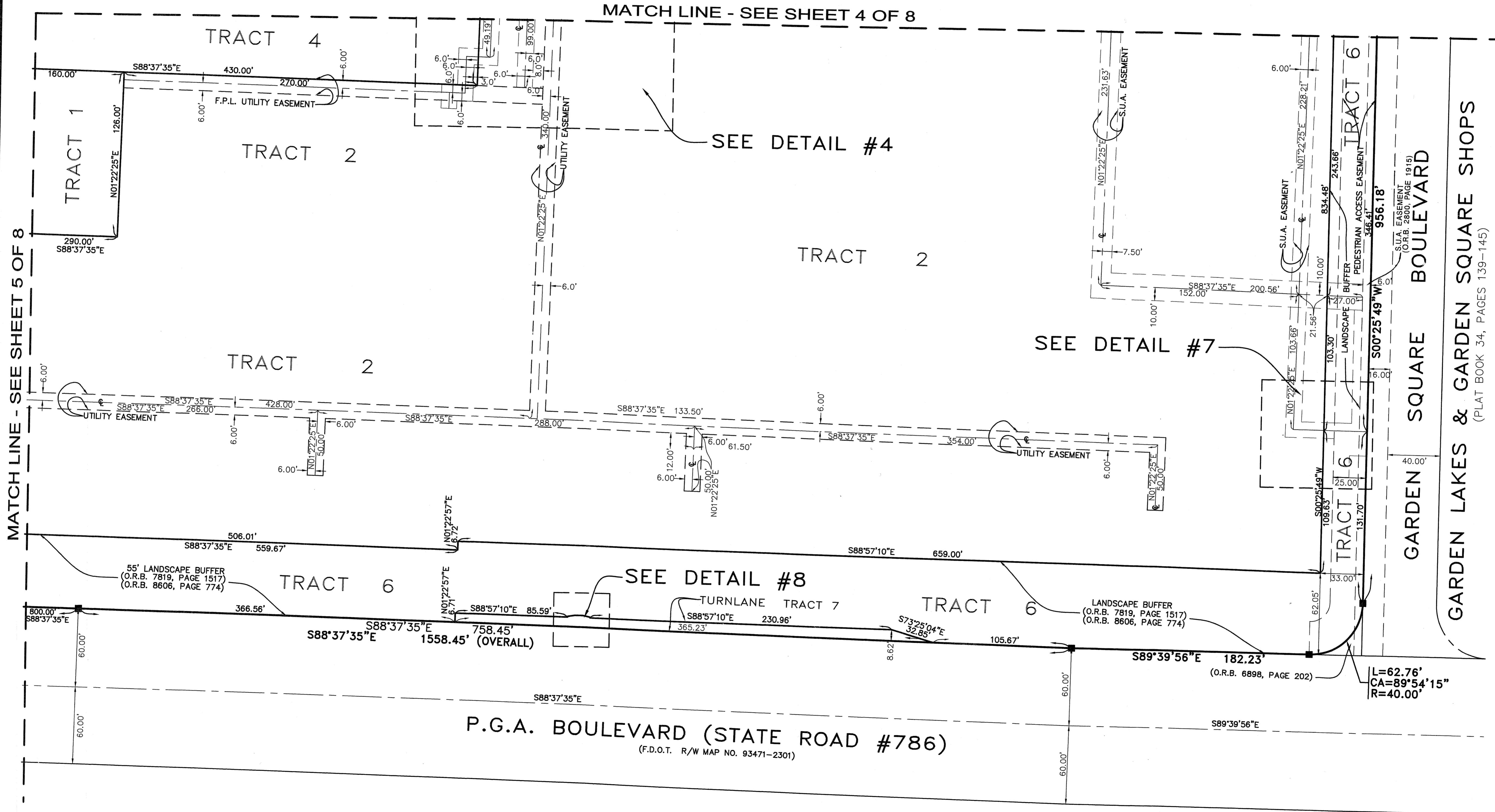
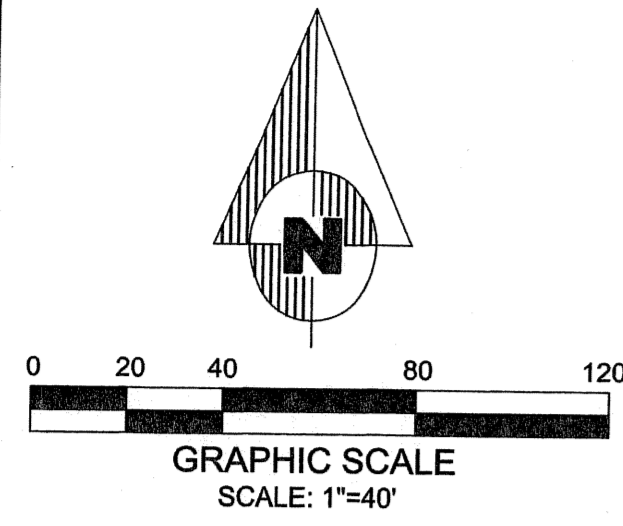


BORLAND CENTER

IN SECTION 1, TOWNSHIP 42 SOUTH, RANGE 42 EAST
CITY OF PALM BEACH GARDENS, PALM BEACH COUNTY, FLORIDA
NOVEMBER 2004
SHEET 6 OF 8 SHEETS

STATE OF FLORIDA)
COUNTY OF PALM BEACH) SS
THIS PLAT WAS FILED FOR
RECORD AT _____
THIS _____ DAY OF _____
A.D., 2004 AND
DULY RECORDED IN PLAT BOOK
ON PAGES _____ AND _____
DOROTHY H. WILKEN, CLERK
CIRCUIT COURT
BY: _____ DC



MATCH LINE - SEE SHEET 5 OF 8

MATCH LINE - SEE SHEET 4 OF 8

SEE DETAIL #4

SEE DETAIL #7

SEE DETAIL #8

(PLAT BOOK 34, PAGES 139-145)

Dailey-Fotorny, inc.
land surveyors - planners
5050 10th Avenue North Suite B - Lake Worth, FL 33463-2062
Phone: 561-965-8787 Fax: 561-965-8963