



**CARNAHAN-PROCTOR-CROSS, INC.**

CONSULTING ENGINEERS · SURVEYORS · PLANNERS

6101 WEST ATLANTIC BOULEVARD, MARGATE, FLORIDA 33063  
 PHONE: 954-972-3959 FAX: 954-972-4178

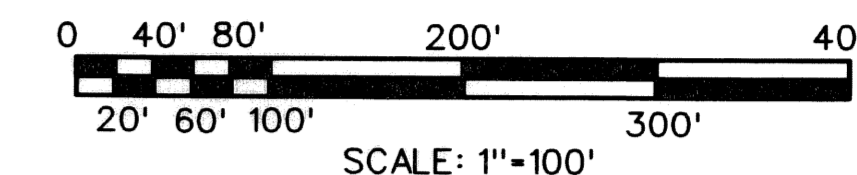
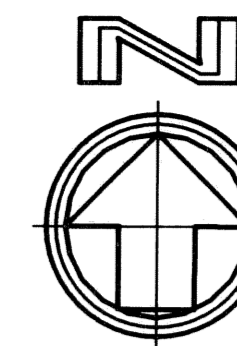
JULY 2004

010404

JM

# WALKER PRESERVE PARCEL

A REPLAT OF PORTIONS OF TRACTS 29, 30, 31, AND 32, BLOCK 44, THE PALM BEACH FARMS CO. PLAT NO. 3, AS RECORDED IN PLAT BOOK 2 AT PAGE 45 OF THE PUBLIC RECORDS OF PALM BEACH COUNTY, FLORIDA AND THE SOUTH ONE-HALF OF THE SOUTHWEST ONE-QUARTER OF SECTION 12, TOWNSHIP 45 SOUTH, RANGE 41 EAST, ALL BEING IN SECTION 12, TOWNSHIP 45 SOUTH, RANGE 41 EAST, PALM BEACH COUNTY, FLORIDA

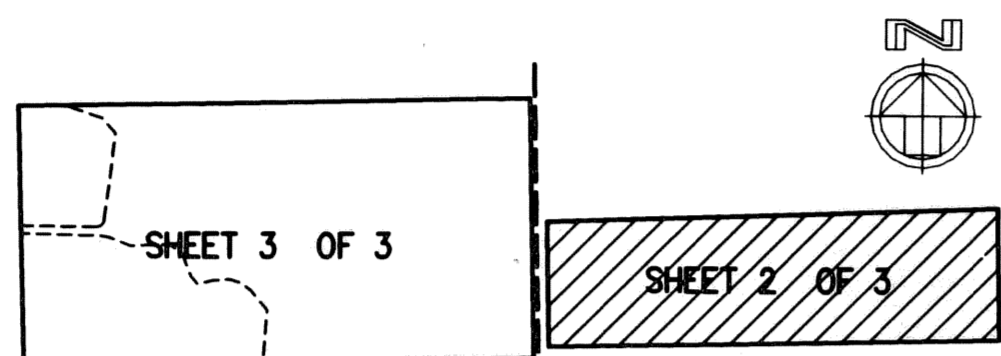


P/30

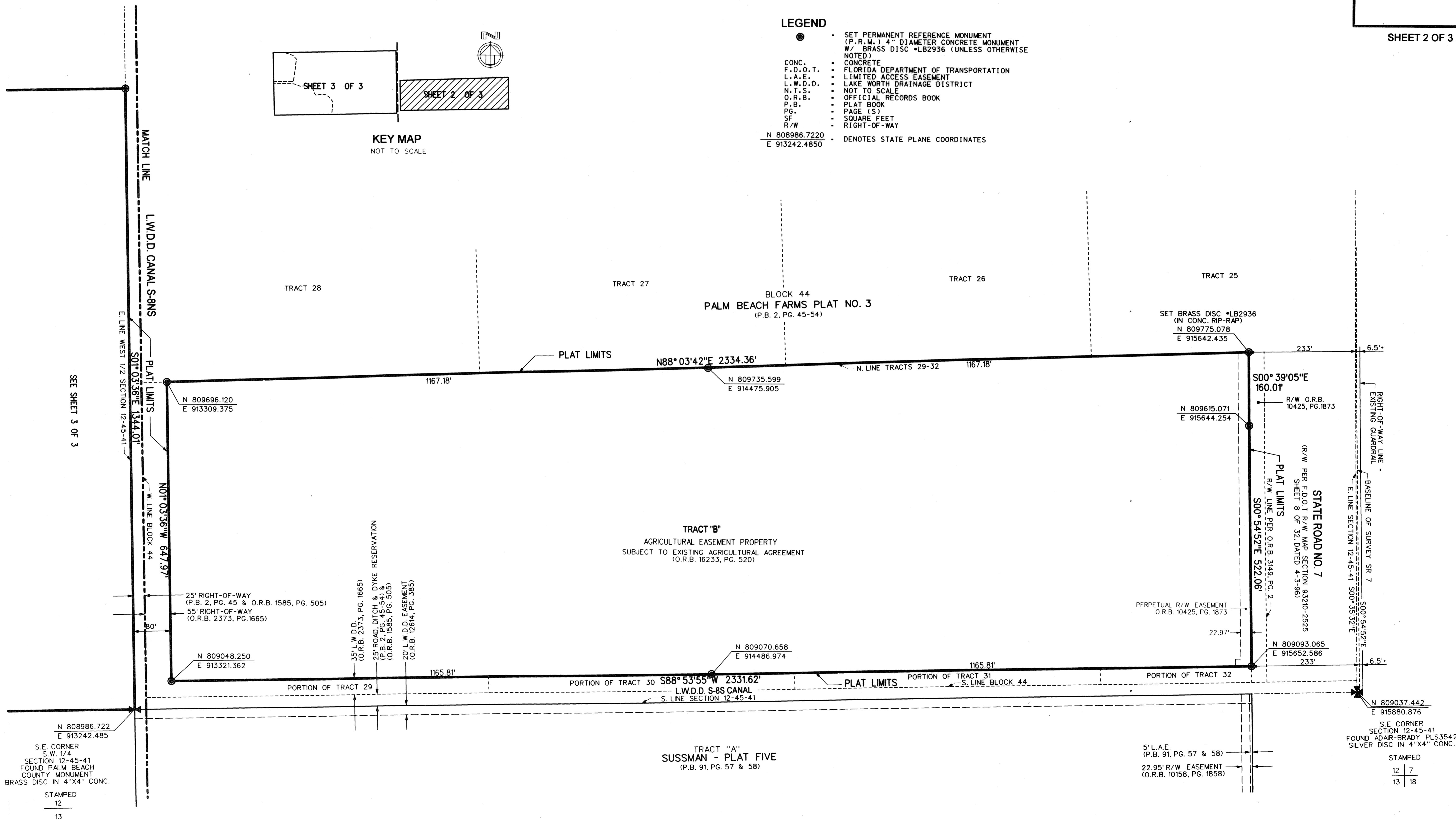
SHEET 2 OF 3

**LEGEND**

- SET PERMANENT REFERENCE MONUMENT (P.R.M.) 4" DIAMETER CONCRETE MONUMENT W/ BRASS DISC #LB2936 (UNLESS OTHERWISE NOTED)
- CONC. CONCRETE
- F.D.O.T. FLORIDA DEPARTMENT OF TRANSPORTATION
- L.A.E. LIMITED ACCESS EASEMENT
- L.W.D.D. LAKE WORTH DRAINAGE DISTRICT
- N.T.S. NOT TO SCALE
- O.R.B. OFFICIAL RECORDS BOOK
- P.B. PLAT BOOK
- PG. PAGE (S)
- SF SQUARE FEET
- R/W RIGHT-OF-WAY
- N 808986.7220 E 913242.4850 DENOTES STATE PLANE COORDINATES



**KEY MAP**  
NOT TO SCALE



SUBDIVISION **WALKER PRESERVE**  
 BOOK **104** PAGE **130**  
 FLOOD ZONE **B** FLOOD MAP # **100 B**  
 ZONING **AGR**  
 QUAD # **04** ZIP CODE **33467**  
 SE **TAZ 742**  
 PUD NAME

FILE: I:\010404\Acad\10404p3.dgn  
 DATE: 04-Nov-04 10:44

S.E. CORNER  
 S.W. 1/4  
 SECTION 12-45-41  
 FOUND PALM BEACH  
 COUNTY MONUMENT  
 BRASS DISC IN 4"x4" CONC.  
 STAMPED  
 12 7  
 13 18

S.E. CORNER  
 SECTION 12-45-41  
 FOUND ADAIR-BRADY PLS3542  
 SILVER DISC IN 4"x4" CONC.  
 STAMPED  
 12 7  
 13 18