

CANYON ISLES PRESERVE PLAT TWO

(A.K.A. DUBOIS/ACME DAIRY PRESERVE)

A PARCEL OF LAND IN SECTIONS 5 & 6, TOWNSHIP 46 SOUTH, RANGE 42 EAST, PALM BEACH COUNTY, FLORIDA, BEING A PORTION OF TRACTS 66-95 AND 98-120, BLOCK 63 PALM BEACH FARMS Co. PLAT No. 3, RECORDED IN PLAT BOOK 2, PAGE 45, OF THE PUBLIC RECORDS OF PALM BEACH COUNTY, FLORIDA

SHEET 2 OF 5 MARCH, 2005

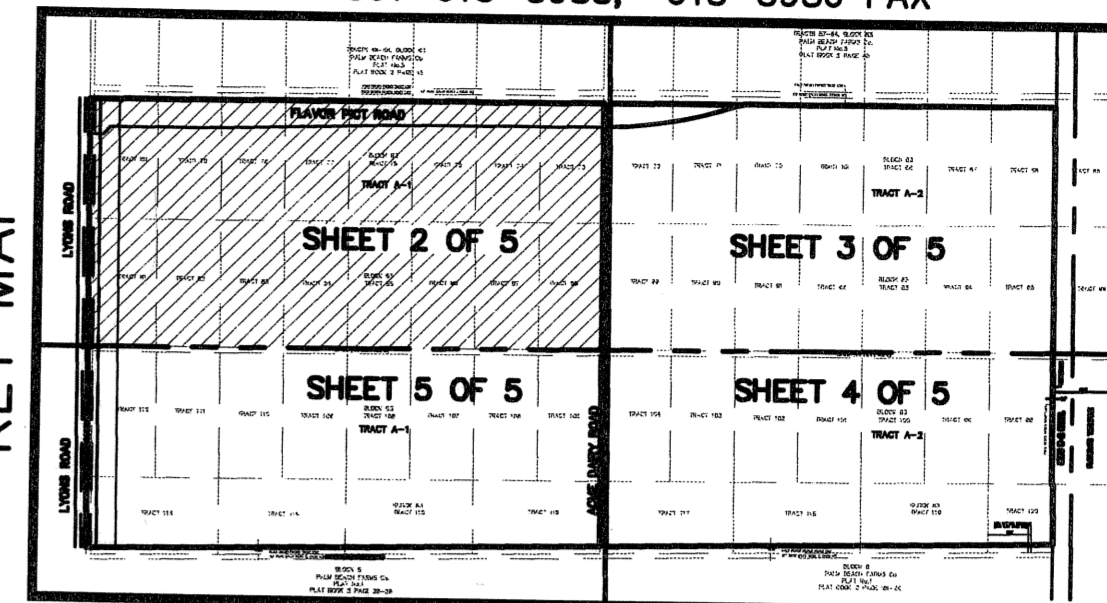
THIS INSTRUMENT WAS PREPARED BY
JOHN E. PHILLIPS III, P.S.M. 4826

BROWN & PHILLIPS, INC.

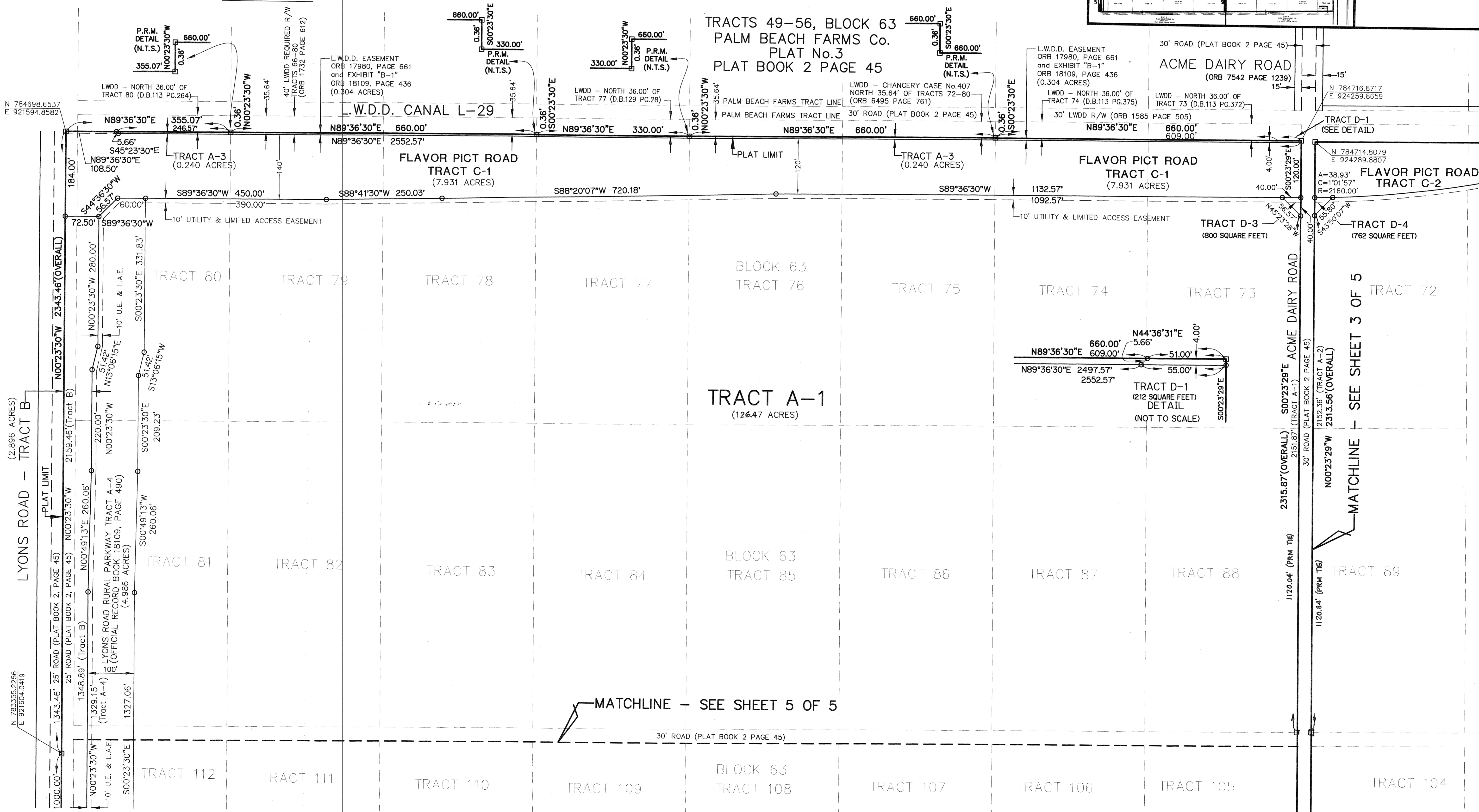
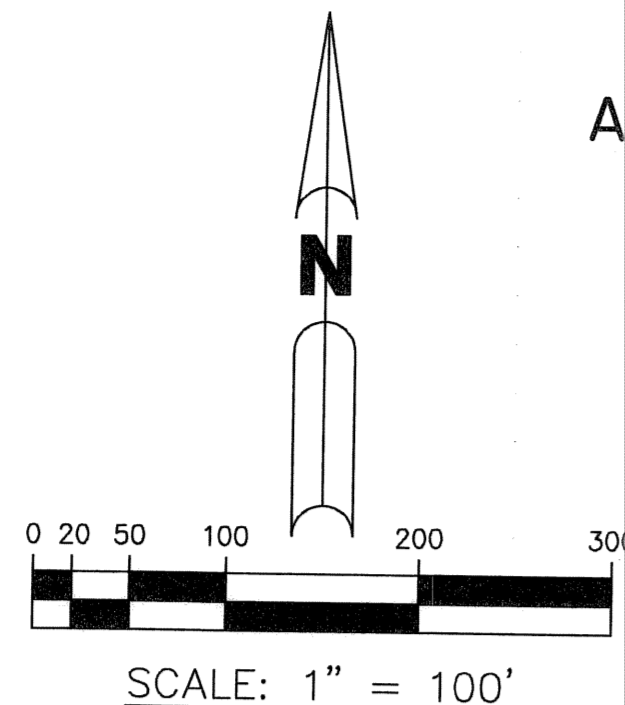
CERTIFICATE OF AUTHORIZATION # LB 6473
901 NORTHPOINT PARKWAY, SUITE 305
WEST PALM BEACH, FLORIDA 33407
561-615-3988, 615-3986 FAX

153

KEY MAP



- ABBREVIATION LEGEND:**
- P.O.B. - POINT OF BEGINNING
 - P.O.C. - POINT OF COMMENCEMENT
 - PRM - PERMANENT REFERENCE MONUMENT
 - - PERMANENT REFERENCE MONUMENT "LB6473" SET
 - - MONUMENT, 1/2" IRON ROD WITH "BROWN & PHILLIPS" CAP TO BE SET
 - U.E. - UTILITY EASEMENT
 - D.E. - DRAINAGE EASEMENT
 - L.A.E. - LIMITED ACCESS EASEMENT
 - R/W - RIGHT-OF-WAY
 - ⊕ - CENTERLINE
 - L.W.D.D. - LAKE WORTH DRAINAGE DISTRICT
 - R/W - RIGHT-OF-WAY
 - ORB - OFFICIAL RECORD BOOK
 - P.B. - PLAT BOOK
 - D.B. - DEED BOOK
 - FND. - FOUND
 - CONC. - CONCRETE
 - (P) - PLAT BEARING OR DISTANCE
 - (M) - MEASURED BEARING OR DISTANCE
 - (C) - CALCULATED BEARING OR DISTANCE
 - (D) - DEEDED BEARING OR DISTANCE
 - PBCo - PALM BEACH COUNTY



SUBDIVISION CANYON ISLES PRESERVE PLAT TWO
BOOK 104
PAGE 153
FLOOD MAP # 200A
ZONING PDD
SE
TAZ 154
PUB NAME