

CANYON ISLES PRESERVE PLAT TWO

(A.K.A. DUBOIS/ACME DAIRY PRESERVE)

A PARCEL OF LAND IN SECTIONS 5 & 6, TOWNSHIP 46 SOUTH, RANGE 42 EAST, PALM BEACH COUNTY, FLORIDA, BEING A PORTION OF TRACTS 66-95 AND 98-120, BLOCK 63 PALM BEACH FARMS Co. PLAT No. 3, RECORDED IN PLAT BOOK 2, PAGE 45, OF THE PUBLIC RECORDS OF PALM BEACH COUNTY, FLORIDA

SHEET 3 OF 5 MARCH, 2005

THIS INSTRUMENT WAS PREPARED BY JOHN E. PHILLIPS III, P.S.M. 4826



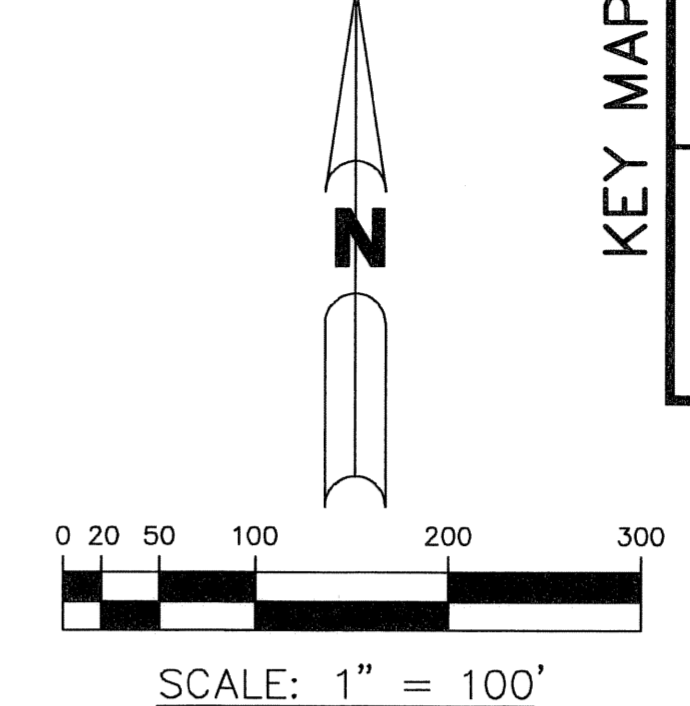
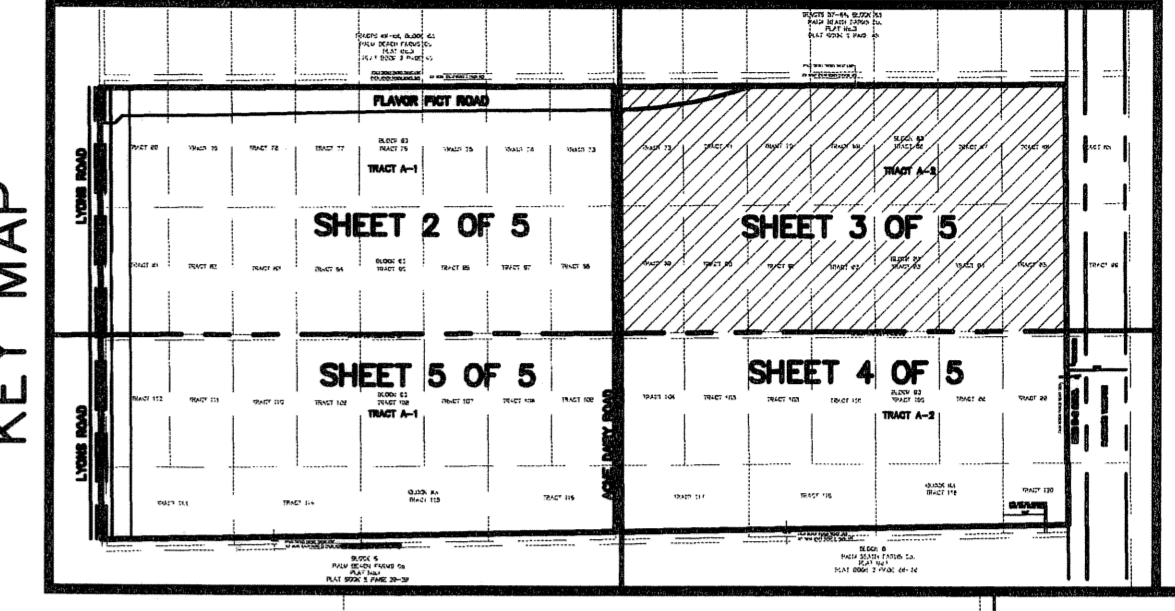
BROWN & PHILLIPS, INC.
 CERTIFICATE OF AUTHORIZATION # LB 6473
 901 NORTHPOINT PARKWAY, SUITE 305
 WEST PALM BEACH, FLORIDA 33407
 561-615-3988, 615-3986 FAX

154

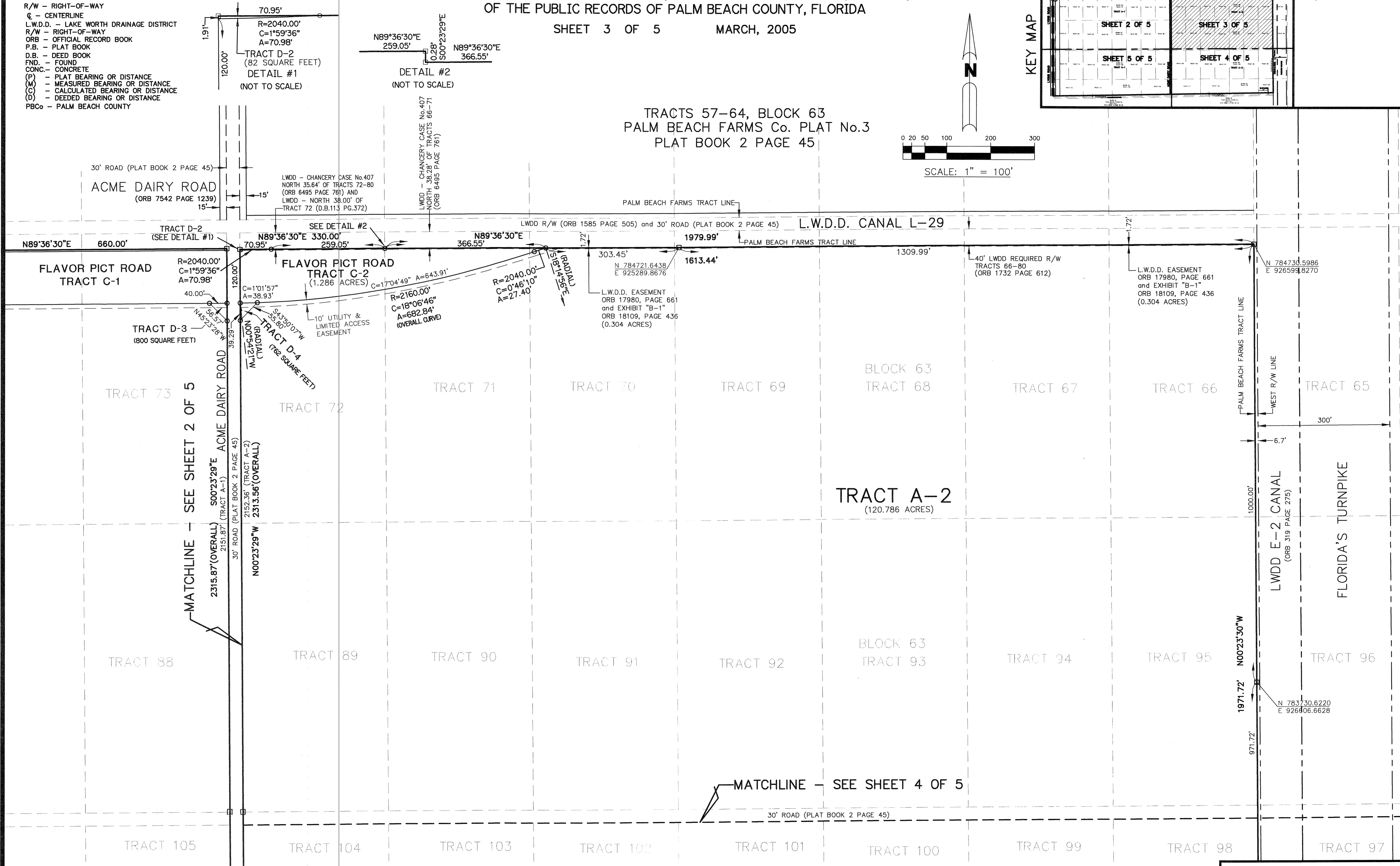
ABBREVIATION LEGEND:

- P.O.B. - POINT OF BEGINNING
- P.O.C. - POINT OF COMMENCEMENT
- PRM - PERMANENT REFERENCE MONUMENT
- - PERMANENT REFERENCE MONUMENT "LB6473" SET
- - MONUMENT, 1/2" IRON ROD WITH "BROWN & PHILLIPS" CAP TO BE SET
- U.E. - UTILITY EASEMENT
- D.E. - DRAINAGE EASEMENT
- L.A.E. - LIMITED ACCESS EASEMENT
- R/W - RIGHT-OF-WAY
- CL - CENTERLINE
- L.W.D.D. - LAKE WORTH DRAINAGE DISTRICT
- R/W - RIGHT-OF-WAY
- ORB - OFFICIAL RECORD BOOK
- P.B. - PLAT BOOK
- D.B. - DEED BOOK
- FND. - FOUND
- CONC. - CONCRETE
- (P) - PLAT BEARING OR DISTANCE
- (M) - MEASURED BEARING OR DISTANCE
- (C) - CALCULATED BEARING OR DISTANCE
- (D) - DEEDED BEARING OR DISTANCE
- PBCo - PALM BEACH COUNTY

KEY MAP



TRACTS 57-64, BLOCK 63
 PALM BEACH FARMS Co. PLAT No.3
 PLAT BOOK 2 PAGE 45



SUBDIVISION CANYON ISLES PRESERVE PLAT TWO
 BOOK 104 PAGE 154
 FLOOD ZONE B
 QUAD # 51
 ZONING PDC
 ZONE CODE 33497
 SEAL 154
 PUB. NAME