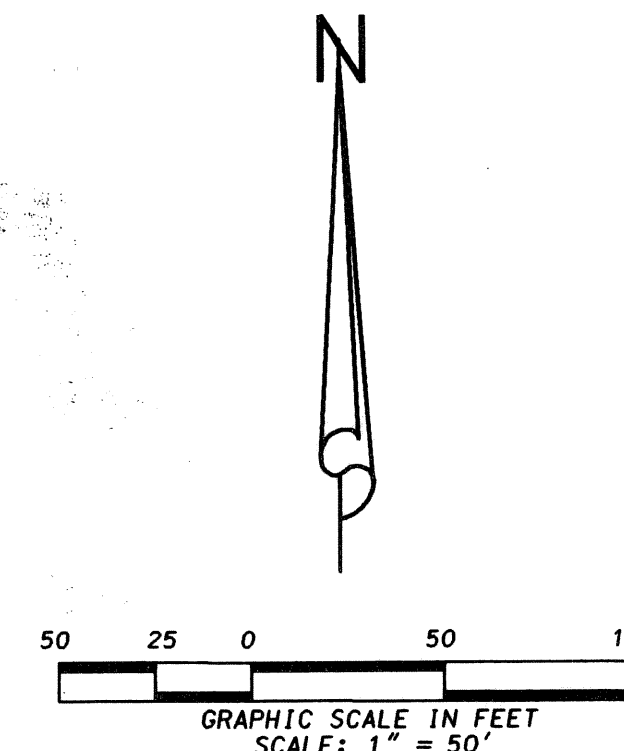


# GREENWAY PROFESSIONAL CENTER

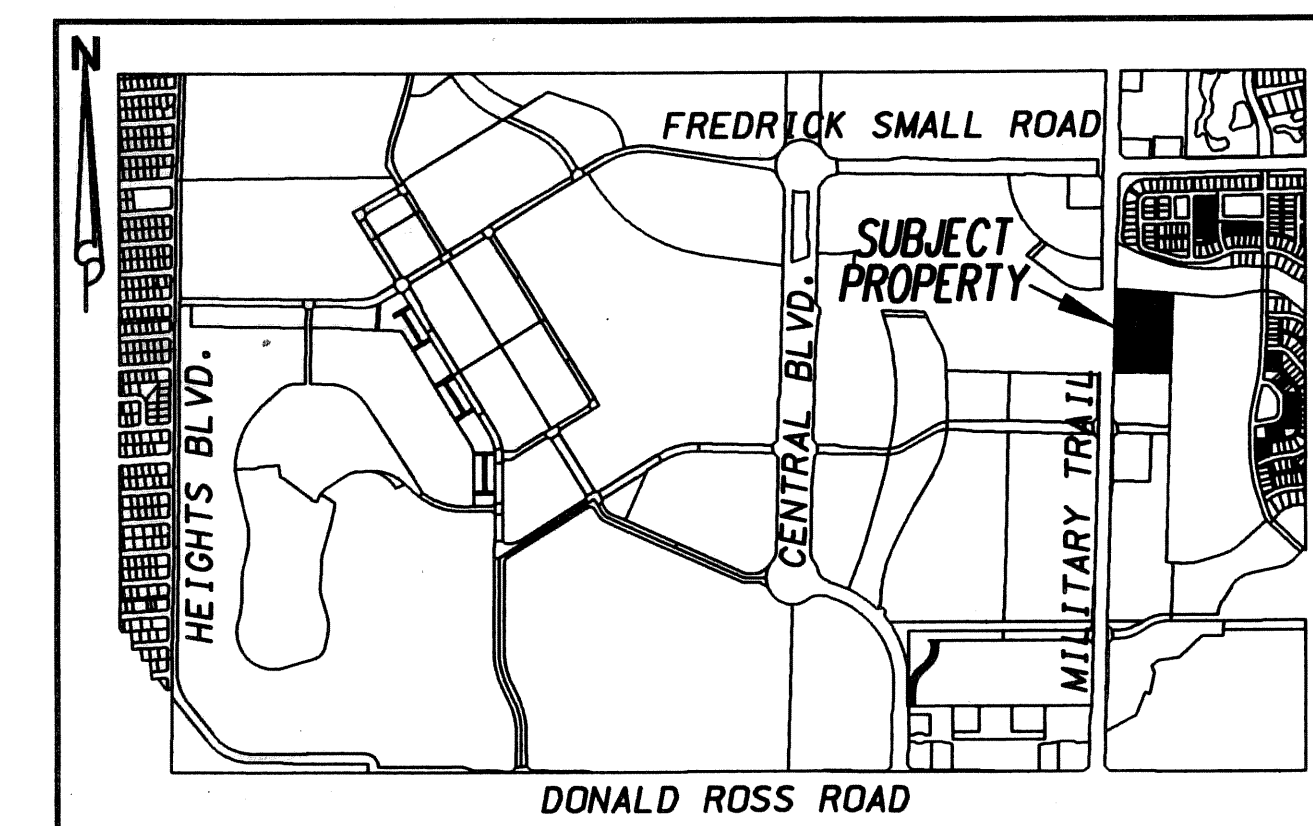
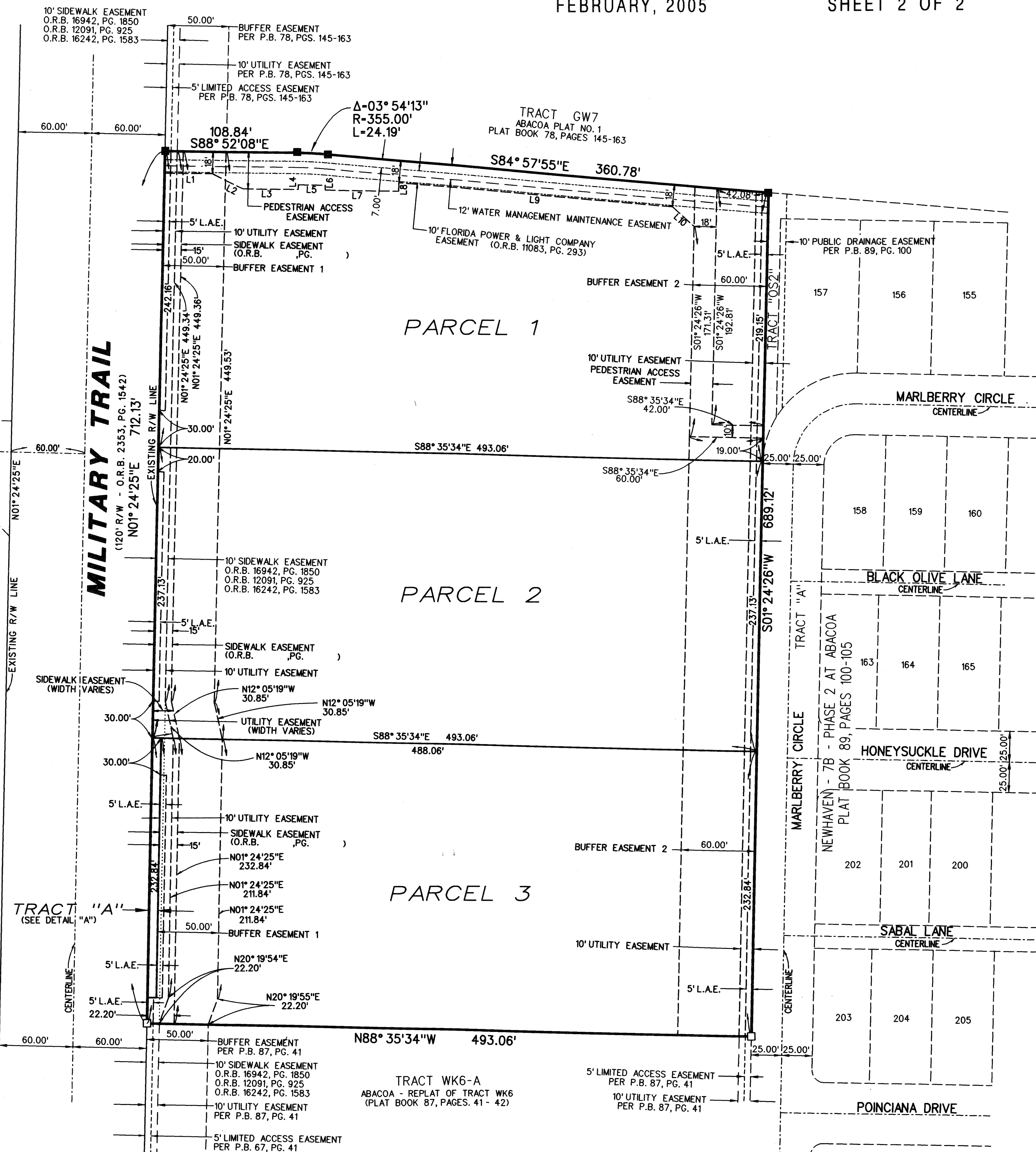
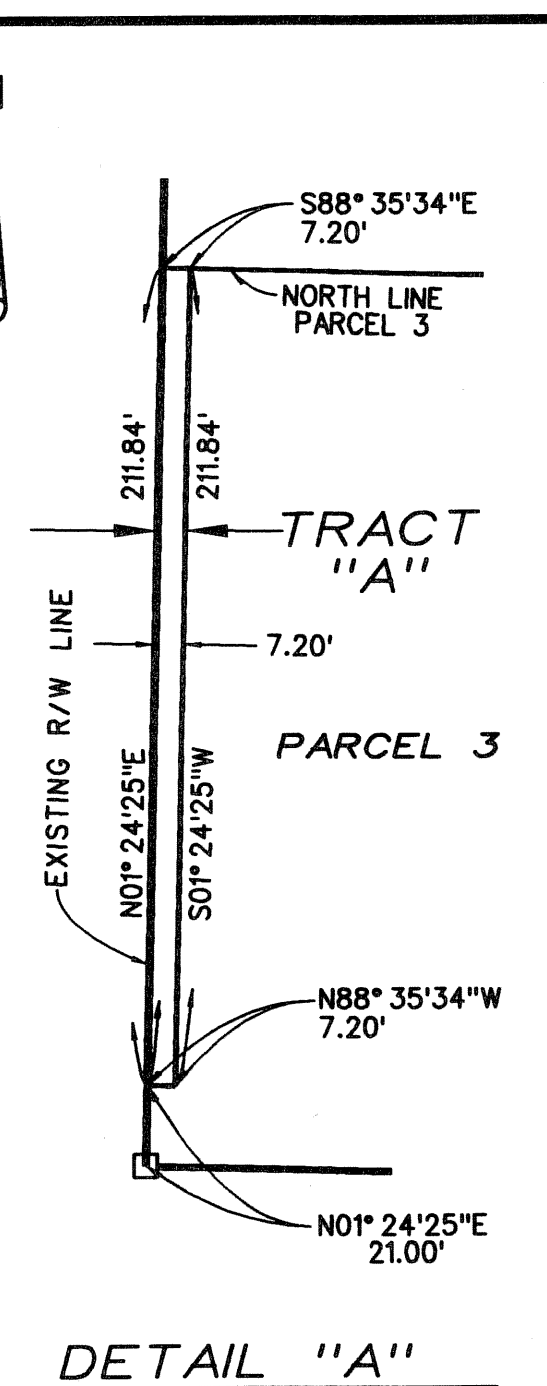
BEING TRACTS WK6-B AND WK6-C, ACCORDING TO THE PLAT OF ABACOA - REPLAT OF TRACT WK6, RECORDED IN PLAT BOOK 87, PAGES 41 AND 42, PUBLIC RECORDS OF PALM BEACH COUNTY, FLORIDA.  
 LYING IN SECTION 24, TOWNSHIP 41 SOUTH, RANGE 42 EAST, TOWN OF JUPITER, PALM BEACH COUNTY, FLORIDA  
 FEBRUARY, 2005 SHEET 2 OF 2



PEDESTRIAN ACCESS EASEMENT LINE TABLE		
NUMBER	DIRECTION	DISTANCE
L1	S88° 52'08"E	39.00'
L2	S63° 29'31"E	28.00'
L3	S88° 52'08"E	45.00'
L4	N01° 07'52"E	4.00'
L5	S88° 52'08"E	22.00'
L6	S01° 07'52"W	4.00'
L7	S88° 52'08"E	60.00'
L8	N01° 07'52"E	7.16'
L9	S84° 57'55"E	224.00'
L10	S47° 34'25"E	24.00'

TRACT "L2"  
 CAMBRIDGE AT ABACOA  
 (P.B. 91, PGS. 150-156)

TRACT "L1"  
 CAMBRIDGE AT ABACOA  
 (P.B. 91, PGS. 150-156)



LOCATION MAP

### AREA TABULATION

ITEM	SQUARE FEET	ACRES	FOR THE USE OF NORTHERN PALM BEACH COUNTY IMPROVEMENT DISTRICT	
			LAND USE CLASSIFICATION	GROSS ACREAGE
PARCEL 1	115,260	2.646	COMMERCIAL (COZ)	2.646
PARCEL 2	116,921	2.684	COMMERCIAL (COZ)	2.684
PARCEL 3	113,280	2.601	COMMERCIAL (COZ)	2.601
TRACT A	1,525	0.035	EXEMPT ACREAGE (EXZ)	0.035
TOTAL	346,986	7.966		7.966

### LEGEND / ABBREVIATIONS

- = A FOUND 4"x4" CONCRETE MONUMENT & DISK STAMPED "PRM LB 26"
- = A SET MAG NAIL & DISK STAMPED "PRM LB 4431"
- C = CENTERLINE
- (NR) = NOT RADIAL
- O.R.B. = OFFICIAL RECORD BOOK
- P.B. = PLAT BOOK
- P.O.B. = POINT OF BEGINNING
- P.R.M. = PERMANENT REFERENCE MONUMENT
- PG. = PAGE
- (R) = RADIAL
- R = RADIUS
- R.P.B. = ROAD PLAT BOOK
- S.F. = SQUARE FEET
- Δ = DELTA ANGLE
- L = ARC LENGTH
- CB = CHORD BEARING
- CL = CHORD LENGTH
- L.A.E. = LIMITED ACCESS EASEMENT
- U.E. = UTILITY EASEMENT

**LIDBERG LAND SURVEYING, INC.**  
 675 West Indiantown Road, Suite 200, Jupiter, Florida 33458 TEL. 561-748-8454

CAD: K:\UST \ 244142 \ 87-41 \ 0954306 \ 0954306.DGN			
REF.	FLD.	FB.	PG.
OFF. R.J.W.			JOB 04-095-306
			DATE 04-04-05
CKD. D.C.L.	SHEET 2	OF 2	DWG. D04-095P