

PERIMETER

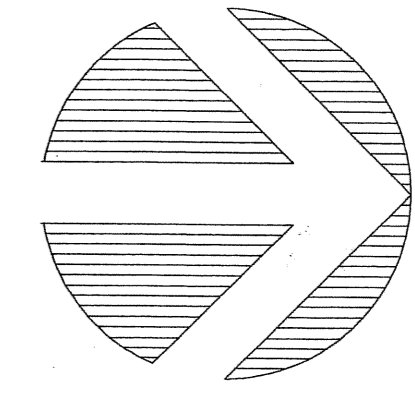
SURVEYING & MAPPING
Prepared by: Jeff S. Hodapp, P.S.M.
Certificate of Authorization No. LB7264
951 Broken Sound Parkway, Suite 320
Boca Raton, Florida 33487
Tel: (561) 241-9988
Fax: (561) 241-5182

P.O.C.
N.W. CORNER
SECTION 20-45-43
FOUND P.B.C. BRASS
DISK IN CONC. MON.

VISTABELLA AT RENAISSANCE COMMONS, A P.U.D.

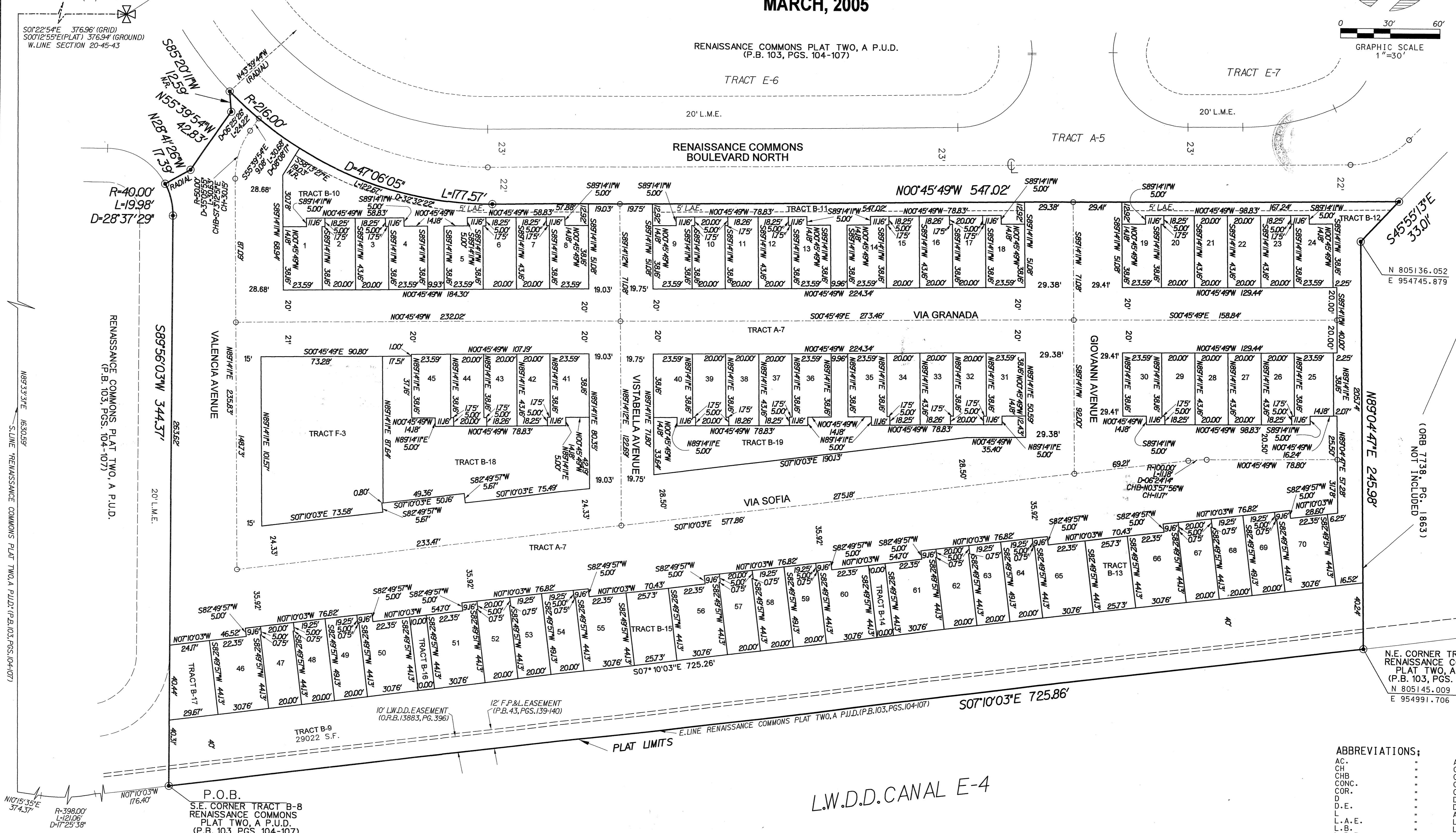
A REPLAT OF TRACT D-5 AND TRACT B-8, "RENAISSANCE COMMONS PLAT TWO, A P.U.D."
(P.B. 103, PGS. 104-107, P.B.C.R.) IN SECTION 17, TOWNSHIP 45 SOUTH, RANGE 43, EAST,
CITY OF BOYNTON BEACH, PALM BEACH COUNTY, FLORIDA.

MARCH, 2005



187

SHEET 2 OF 2



N 805136.052
E 954745.879

N.E. CORNER TRACT B-8
RENAISSANCE COMMONS
PLAT TWO, A P.U.D.
(P.B. 103, PGS. 104-107)
N 805145.009
E 954991.706

- ABBREVIATIONS:**
- AC. ACRES
 - CH CHORD
 - CHB CHORD BEARING
 - CONC. CONCRETE
 - COR. CORNER
 - D. DELTA (CENTRAL ANGLE)
 - D.E. DRAINAGE EASEMENT
 - ARL. ARLENSH
 - L.A.E. LIMITED ACCESS EASEMENT
 - L.B. LICENSED BUSINESS
 - L.B.E. LANDSCAPE BUFFER EASEMENT
 - L.M.E. LAKE MAINTENANCE EASEMENT
 - L.S. LICENSED SURVEYOR
 - L.S.E. LIFT STATION EASEMENT
 - L.W.D.D. LAKE WORTH DRAINAGE DISTRICT
 - MON. MONUMENT
 - O.R.B. OFFICIAL RECORDS BOOK
 - N.R. NON-RADIAL
 - P.B. PLAT BOOK
 - P.B.C.R. PALM BEACH COUNTY RECORDS
 - PG. PAGE
 - P.C.P. PERMANENT CONTROL POINT
 - P.O.B. POINT OF BEGINNING
 - P.O.C. POINT OF COMMENCEMENT
 - P.R.M. PERMANENT REFERENCE MONUMENT
 - P.S.M. PROFESSIONAL SURVEYOR & MAPPER
 - P.U.D. PLANNED UNIT DEVELOPMENT
 - R. RADIAL
 - R/W. RIGHT-OF-WAY
 - SEC. SECTION
 - S.F. SQUARE FEET
 - U.E. UTILITY EASEMENT

- LEGEND:**
- SET P.R.M. (UNLESS OTHERWISE NOTED) - 4" DIAMETER CONC. MON. WITH ALUMINUM DISK STAMPED - LB7264
 - P.C.P. CENTERLINE

L.W.D.D. CANAL E-4

PLAT LIMITS

P.O.B.
S.E. CORNER TRACT B-8
RENAISSANCE COMMONS
PLAT TWO, A P.U.D.
(P.B. 103, PGS. 104-107)

RENAISSANCE COMMONS PLAT TWO, A P.U.D. (P.B. 103, PGS. 104-107)

"MOTOROLA"
(P.B. 43, PGS. 139-140)

(ORB 7738, Pg. 1863)