

# HIGHLAND GROVE ESTATES

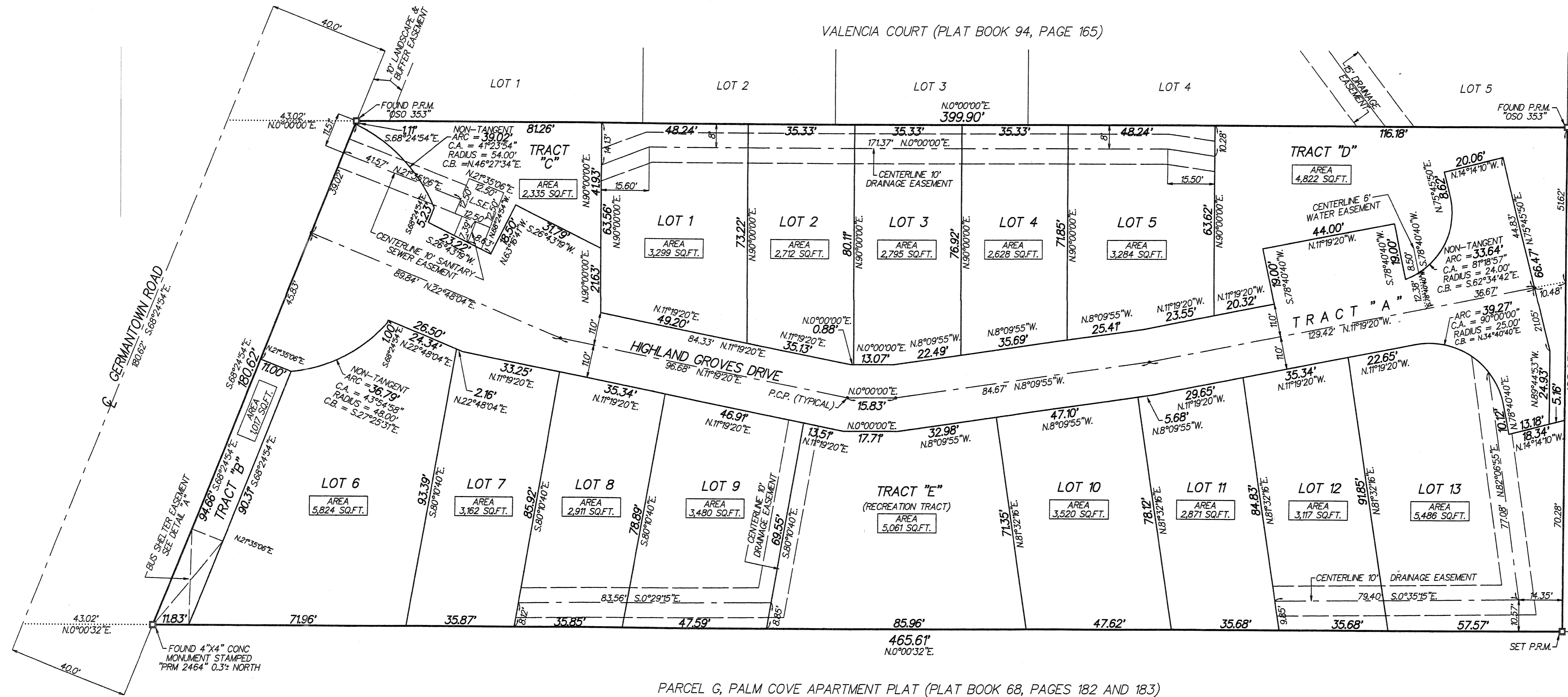
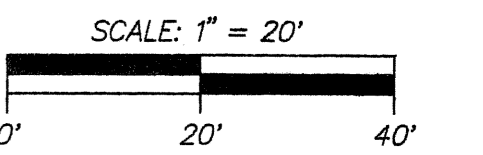
BEING A PORTION OF THE SOUTHEAST QUARTER (S.E.1/4) OF THE NORTHEAST QUARTER (N.E.1/4) OF THE NORTHEAST QUARTER (N.E.1/4) OF SECTION 25, TOWNSHIP 46 SOUTH, RANGE 42 EAST, CITY OF DELRAY BEACH, PALM BEACH COUNTY, FLORIDA.

OCTOBER 2004  
SHEET 2 OF 2

24

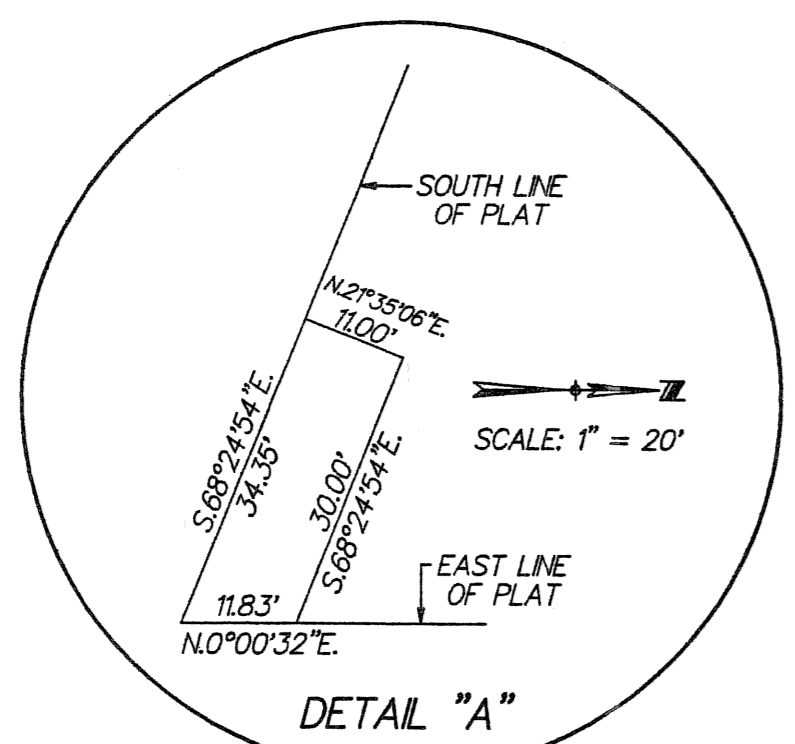
COUNTY OF PALM BEACH  
STATE OF FLORIDA

THIS PLAT WAS FILED FOR RECORD AT \_\_\_\_\_  
THIS \_\_\_\_\_ DAY OF \_\_\_\_\_  
20\_\_\_\_ AND DULY RECORDED IN PLAT BOOK NO. \_\_\_\_\_  
ON PAGE \_\_\_\_\_  
SHARON R. BOCK, CLERK OF CIRCUIT COURT  
BY \_\_\_\_\_ D.C.



SPANISH WELLS PHASE ONE (PLAT BOOK 34, PAGES 19 AND 20)

NORTH LINE OF SECTION 25/46/42



LEGEND:  
 ⊕ = CENTERLINE  
 PRM = 4"x4" CONC MONUMENT STAMPED "PRM 353"  
 C.A. = CENTRAL ANGLE  
 C.B. = CHORD BEARING  
 THE CENTERLINE OF GERMANTOWN ROAD IS ASSUMED TO BEAR S.68°24'54"E.  
 CONC = CONCRETE  
 P.C.P. = PERMANENT CONTROL POINT

THIS INSTRUMENT WAS PREPARED BY PAUL D. ENGLE, IN THE OFFICE OF O'BRIEN, SUTER & O'BRIEN, INC., 2601 NORTH FEDERAL HIGHWAY, DELRAY BEACH, FLORIDA 33483 (561) 276-4501

PARCEL G, PALM COVE APARTMENT PLAT (PLAT BOOK 68, PAGES 182 AND 183)