

CANYON ISLES - PLAT TWO

A PARCEL OF LAND IN SECTION 32, TOWNSHIP 45 SOUTH, RANGE 42 EAST, PALM BEACH COUNTY, FLORIDA, BEING A PORTION OF TRACTS 10-13, 20-24, AND 42-45, BLOCK 59, PALM BEACH FARMS Co. PLAT No.3, RECORDED IN PLAT BOOK 2, PAGE 45, OF THE PUBLIC RECORDS OF PALM BEACH COUNTY, FLORIDA

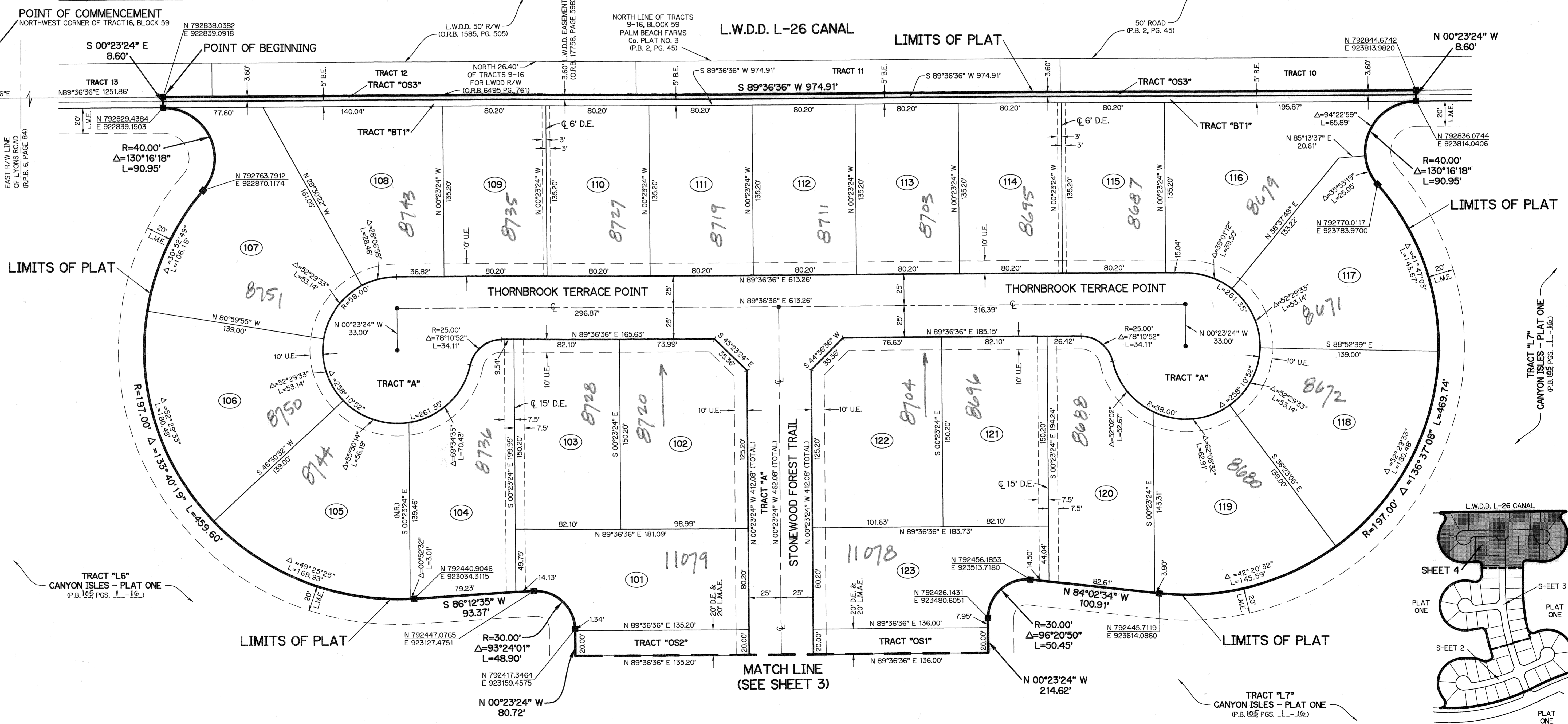
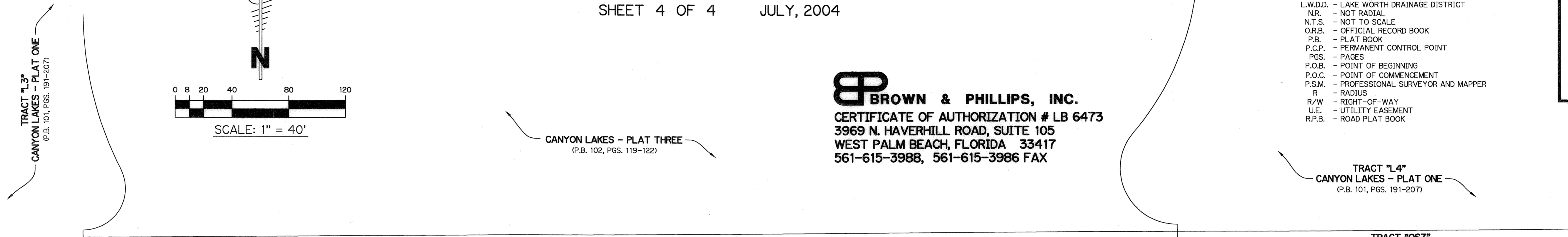
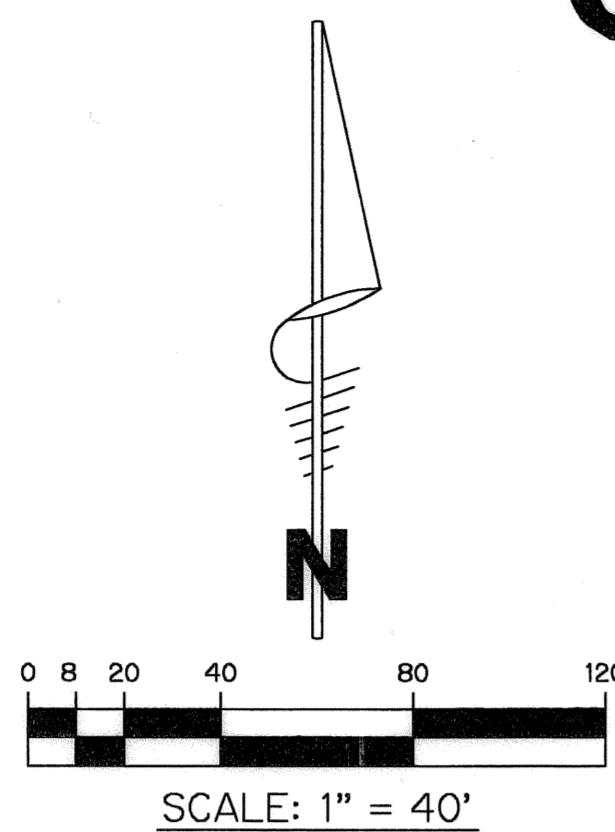
SHEET 4 OF 4 JULY, 2004

LEGEND:

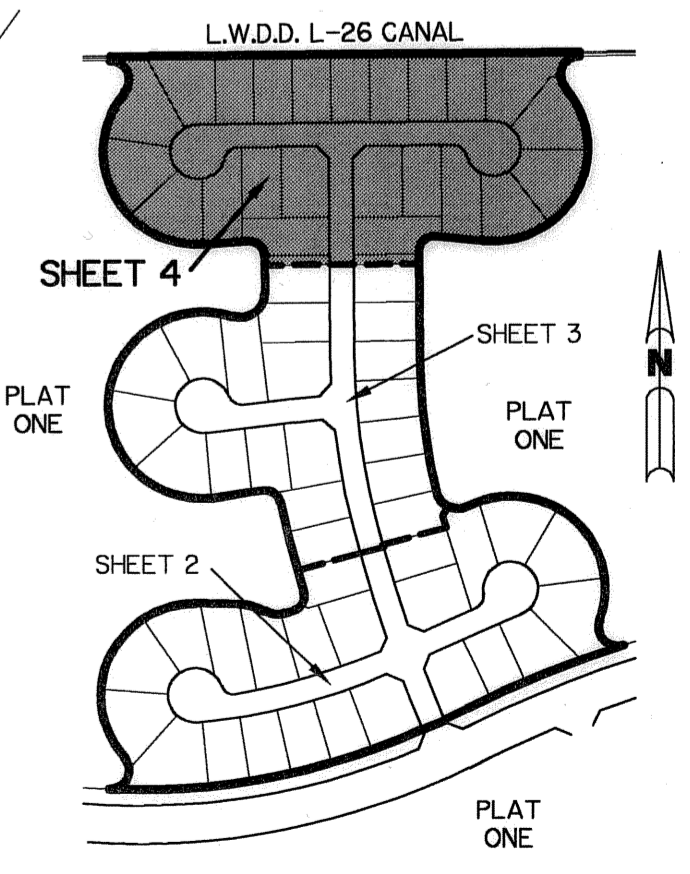
- - FOUND PERMANENT REFERENCE MONUMENT, L.B. #6473
- - SET PERMANENT CONTROL POINT, L.B. #6473
- - FOUND PERMANENT CONTROL POINT, L.B. #6473
- △ - DELTA ANGLE
- B.E. - BUFFER EASEMENT
- CB - CHORD BEARING
- CH - CHORD DISTANCE
- CL - CENTERLINE
- D.B. - DEED BOOK
- D.E. - DRAINAGE EASEMENT
- ARC LENGTH
- L.A.E. - LIMITED ACCESS EASEMENT
- L.M.A.E. - LAKE MAINTENANCE ACCESS EASEMENT
- L.M.E. - LAKE MAINTENANCE EASEMENT
- L.W.D.D. - LAKE WORTH DRAINAGE DISTRICT
- NR - NOT RADIAL
- NT.S. - NOT TO SCALE
- O.R.B. - OFFICIAL RECORD BOOK
- P.B. - PLAT BOOK
- P.C.P. - PERMANENT CONTROL POINT
- P.G.S. - PAGES
- P.O.B. - POINT OF BEGINNING
- P.O.C. - POINT OF COMMENCEMENT
- P.S.M. - PROFESSIONAL SURVEYOR AND MAPPER
- R - RADIUS
- R/W - RIGHT-OF-WAY
- U.E. - UTILITY EASEMENT
- R.P.B. - ROAD PLAT BOOK

43

BROWN & PHILLIPS, INC.
 CERTIFICATE OF AUTHORIZATION # LB 6473
 3969 N. HAVERHILL ROAD, SUITE 105
 WEST PALM BEACH, FLORIDA 33417
 561-615-3988, 561-615-3986 FAX



SUBDIVISION CANYON ISLES - PLAT 2
 BOOK 105 PAGE 48 FLOOD MAP # 200 A
 FLOOD ZONE B ZONING PDD
 QUAD # 50 SE ZIP CODE 33437
 TAZ 150 FUD NAME FOGG CENTRAL



KEY MAP N.T.S.