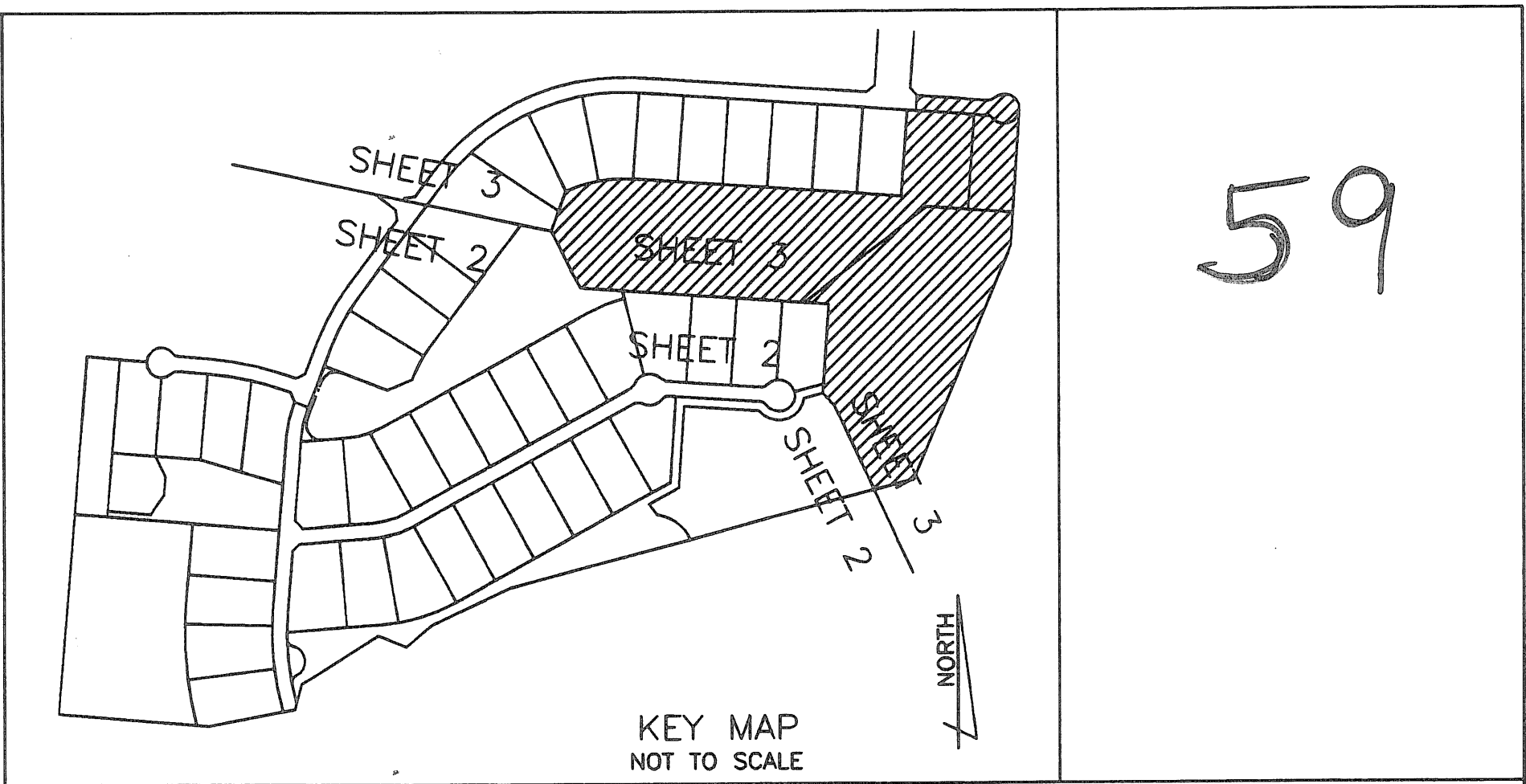
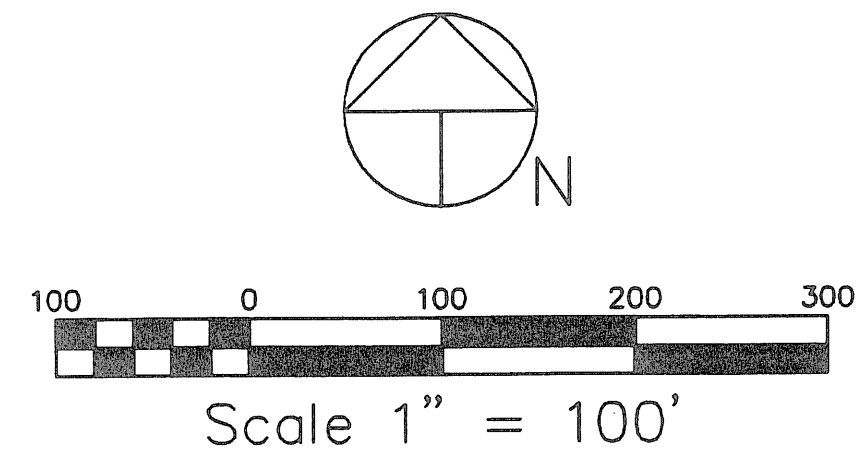


STONEWAL ESTATES P.U.D. PLAT No.3A

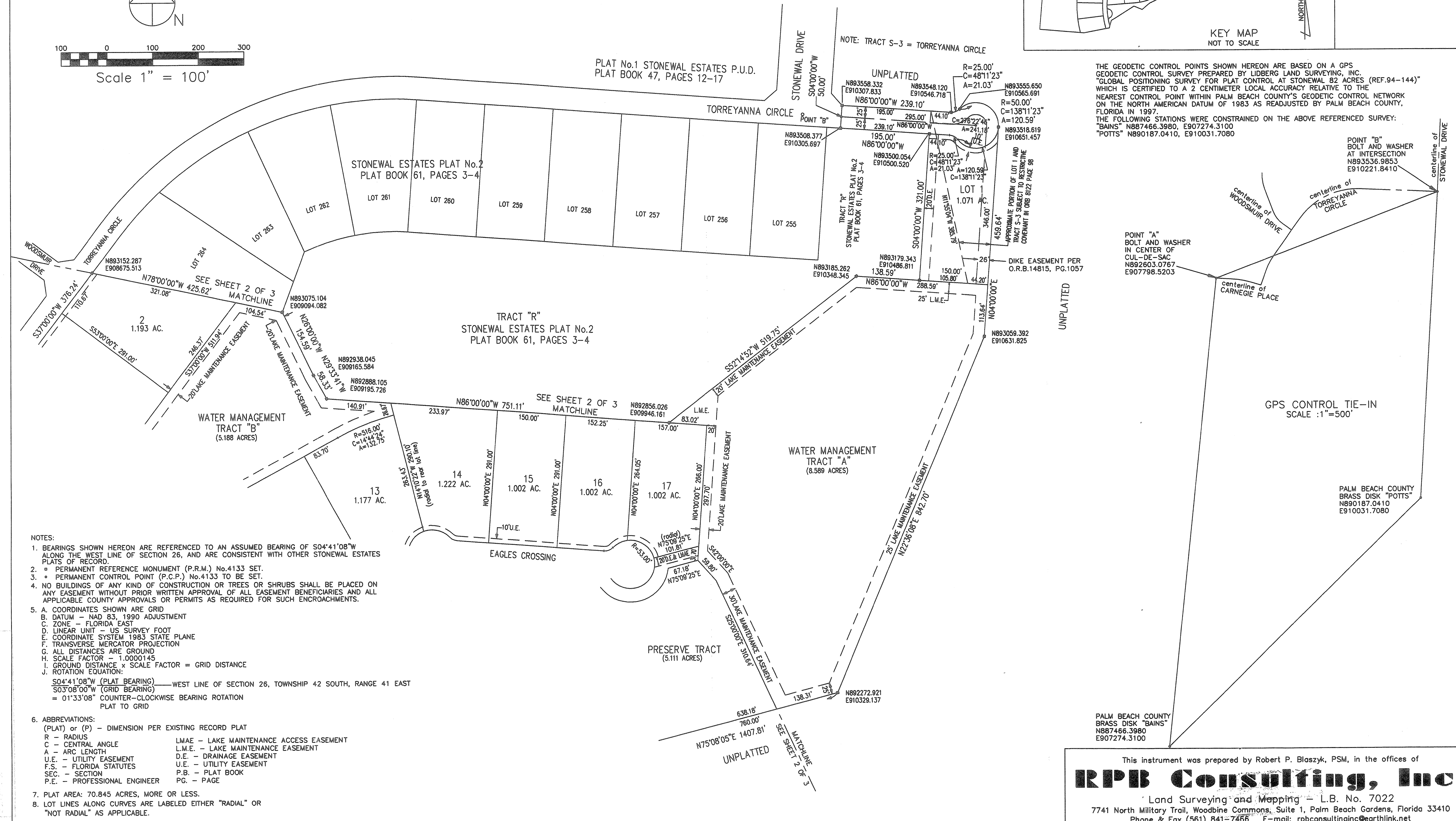
A PORTION OF SECTION 26, TOWNSHIP 42 SOUTH, RANGE 41 EAST, PALM BEACH COUNTY, FLORIDA, AND A REPLAT OF LOTS 1-4 AND THE WATER MANAGEMENT TRACTS OF STONEWAL ESTATES P.U.D. PLAT No.3, PLAT BOOK 71, PAGES 133 AND 134

APRIL 2003

SHEET 3 OF 3



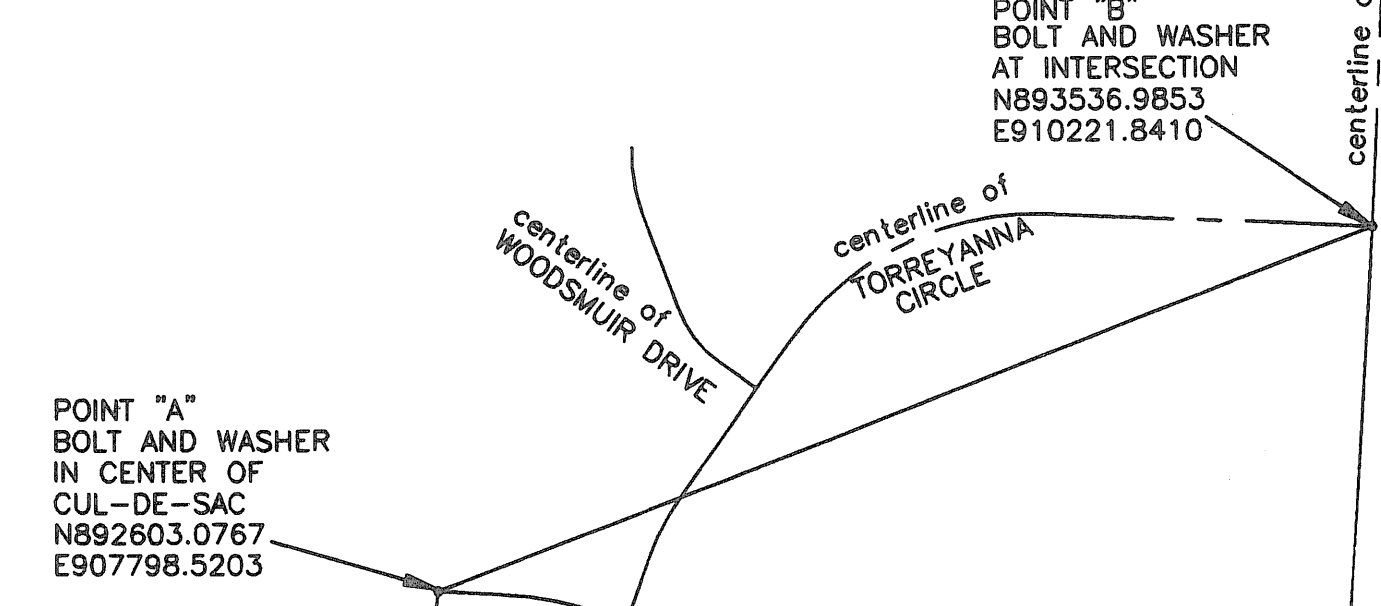
59



THE GEODETIC CONTROL POINTS SHOWN HEREON ARE BASED ON A GPS GEODETIC CONTROL SURVEY PREPARED BY LIBBERG LAND SURVEYING, INC. "GLOBAL POSITIONING SURVEY FOR PLAT CONTROL AT STONEWAL 82 ACRES (REF.94-144)" WHICH IS CERTIFIED TO A 2 CENTIMETER LOCAL ACCURACY RELATIVE TO THE NEAREST CONTROL POINT WITHIN PALM BEACH COUNTY'S GEODETIC CONTROL NETWORK ON THE NORTH AMERICAN DATUM OF 1983 AS READJUSTED BY PALM BEACH COUNTY, FLORIDA IN 1997.

THE FOLLOWING STATIONS WERE CONSTRAINED ON THE ABOVE REFERENCED SURVEY:

"BAINS" N887466.3980, E907274.3100
 "POTTS" N890187.0410, E910031.7080



GPS CONTROL TIE-IN
SCALE :1"=500'

PALM BEACH COUNTY
BRASS DISK "POTTS"
N890187.0410
E910031.7080

PALM BEACH COUNTY
BRASS DISK "BAINS"
N887466.3980
E907274.3100

This instrument was prepared by Robert P. Blaszyk, PSM, in the offices of
RPB Consulting, Inc.
 Land Surveying and Mapping - L.B. No. 7022
 7741 North Military Trail, Woodbine Commons, Suite 1, Palm Beach Gardens, Florida 33410
 Phone & Fax (561) 841-7466 E-mail: rpbconsultinginc@earthlink.net

- NOTES:
- BEARINGS SHOWN HEREON ARE REFERENCED TO AN ASSUMED BEARING OF S04°41'08"W ALONG THE WEST LINE OF SECTION 26, AND ARE CONSISTENT WITH OTHER STONEWAL ESTATES PLATS OF RECORD.
 - PERMANENT REFERENCE MONUMENT (P.R.M.) No.4133 SET.
 - PERMANENT CONTROL POINT (P.C.P.) No.4133 TO BE SET.
 - NO BUILDINGS OF ANY KIND OF CONSTRUCTION OR TREES OR SHRUBS SHALL BE PLACED ON ANY EASEMENT WITHOUT PRIOR WRITTEN APPROVAL OF ALL EASEMENT BENEFICIARIES AND ALL APPLICABLE COUNTY APPROVALS OR PERMITS AS REQUIRED FOR SUCH ENCROACHMENTS.
 - A. COORDINATES SHOWN ARE GRID
 B. DATUM - NAD 83, 1990 ADJUSTMENT
 C. ZONE - FLORIDA EAST
 D. LINEAR UNIT - US SURVEY FOOT
 E. COORDINATE SYSTEM 1983 STATE PLANE
 F. TRANSVERSE MERCATOR PROJECTION
 G. ALL DISTANCES ARE GROUND
 H. SCALE FACTOR - 1.0000145
 I. GROUND DISTANCE x SCALE FACTOR = GRID DISTANCE
 J. ROTATION EQUATION:
 S04°41'08"W (PLAT BEARING) - WEST LINE OF SECTION 26, TOWNSHIP 42 SOUTH, RANGE 41 EAST
 S03°08'00"W (GRID BEARING)
 = 01°33'08" COUNTER-CLOCKWISE BEARING ROTATION
 PLAT TO GRID
 - ABBREVIATIONS:
 (PLAT) or (P) - DIMENSION PER EXISTING RECORD PLAT
 R - RADIUS
 C - CENTRAL ANGLE
 A - ARC LENGTH
 U.E. - UTILITY EASEMENT
 F.S. - FLORIDA STATUTES
 SEC. - SECTION
 P.E. - PROFESSIONAL ENGINEER
 LMAE - LAKE MAINTENANCE ACCESS EASEMENT
 L.M.E. - LAKE MAINTENANCE EASEMENT
 D.E. - DRAINAGE EASEMENT
 U.E. - UTILITY EASEMENT
 P.B. - PLAT BOOK
 PG. - PAGE
 - PLAT AREA: 70.845 ACRES, MORE OR LESS.
 - LOT LINES ALONG CURVES ARE LABELED EITHER "RADIAL" OR "NOT RADIAL" AS APPLICABLE.

Stonewal Estates, Pl. 3A
 105
 59
 826