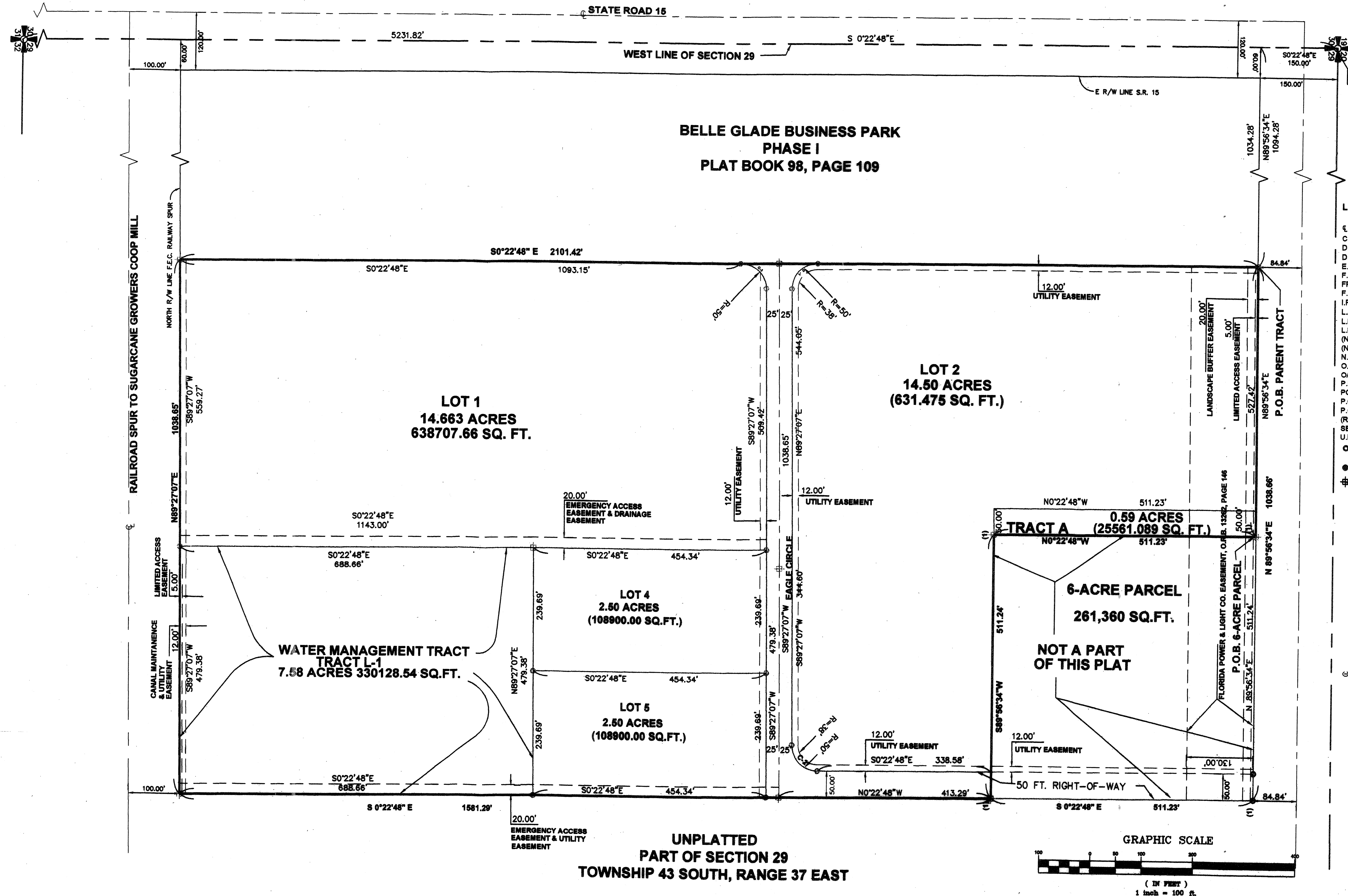


BELLE GLADE BUSINESS PARK PHASE II

PART OF THE NORTHWEST QUARTER
 OF SECTION 29 TOWNSHIP 43 SOUTH, RANGE 37 EAST,
 CITY OF BELLE GLADE,
 PALM BEACH COUNTY, FLORIDA
 JANUARY 2005

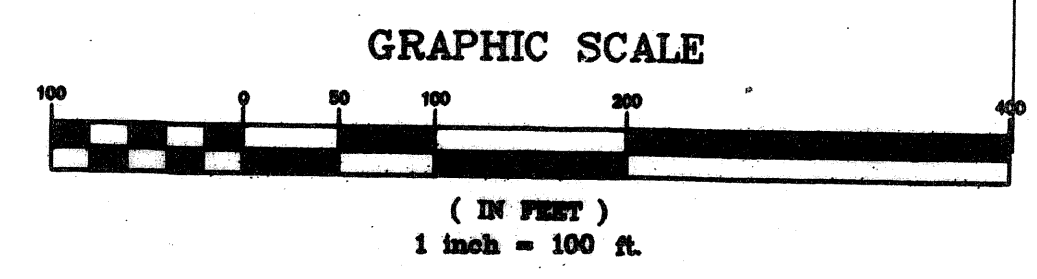


LEGEND

CL	CENTER LINE	CL	CANAL MAINTENANCE & UTILITY EASEMENT
C.M. & U.E.	DESCRIPTION	D.E.	DRAINAGE EASEMENT
D.E.	EMERGENCY ACCESS EASEMENT	F.D.O.T.	FLORIDA DEPARTMENT OF TRANSPORTATION
E.A.E.	EMERGENCY ACCESS EASEMENT	FP&L	FLORIDA POWER AND LIGHT COMPANY
F.D.O.T.	FLORIDA DEPARTMENT OF TRANSPORTATION	F.R.E.	FUTURE ROADWAY EASEMENT
FP&L	FLORIDA POWER AND LIGHT COMPANY	I.R.&C.	IRON ROD AND CAP
F.R.E.	FUTURE ROADWAY EASEMENT	L.A.E.	LIMITED ACCESS EASEMENT
I.R.&C.	IRON ROD AND CAP	L.B.	LICENSED BUSINESS
L.A.E.	LIMITED ACCESS EASEMENT	L.B.E.	LANDSCAPE BUFFER EASEMENT
L.B.	LICENSED BUSINESS	(NR)	NOT RADIAL
L.B.E.	LANDSCAPE BUFFER EASEMENT	(N-T)	NON-TANGENT
(NR)	NOT RADIAL	N.T.S.	NOT TO SCALE
(N-T)	NON-TANGENT	O.R.B.	OFFICIAL RECORDS BOOK
N.T.S.	NOT TO SCALE	O/S	OFFSET
O.R.B.	OFFICIAL RECORDS BOOK	P.B.C.R.	PALM BEACH COUNTY RECORD
O/S	OFFSET	PG.	PAGE
P.B.C.R.	PALM BEACH COUNTY RECORD	P.O.B.	POINT OF BEGINNING
PG.	PAGE	P.O.C.	POINT OF COMMENCEMENT
P.O.B.	POINT OF BEGINNING	(RAD)	RADIAL
P.O.C.	POINT OF COMMENCEMENT	SECTION O-O-O	SECTION-TOWNSHIP-RANGE
(RAD)	RADIAL	U.E.	UTILITY EASEMENT
SECTION O-O-O	SECTION-TOWNSHIP-RANGE	○	SET 5/8" IRON ROD AND CAP (L.B. 3411)
U.E.	UTILITY EASEMENT	●	SET PERMANENT CONTROL POINT (L.B. 3411)
○	SET 5/8" IRON ROD AND CAP (L.B. 3411)	⊕	SET PERMANENT REFERENCE MONUMENT (L.B. 3411)
●	SET PERMANENT CONTROL POINT (L.B. 3411)		
⊕	SET PERMANENT REFERENCE MONUMENT (L.B. 3411)		

CURVE TABLE

CURVE	LENGTH	RADIUS	DELTA
C-1	78.69'	50.00'	90°10'05"
C-2	78.39'	50.00'	89°49'55"
C-3	78.39'	50.00'	89°49'55"



**UNPLATTED
 PART OF SECTION 29
 TOWNSHIP 43 SOUTH, RANGE 37 EAST**

NOTICE:
 This plat as recorded in its graphic form, is the official depiction of the subdivided lands described herein and will in no circumstances be supplanted in authority by any other graphic or digital form of the plat.
 There may be additional restrictions that are not recorded in this plat that may be found in the public records of this county.