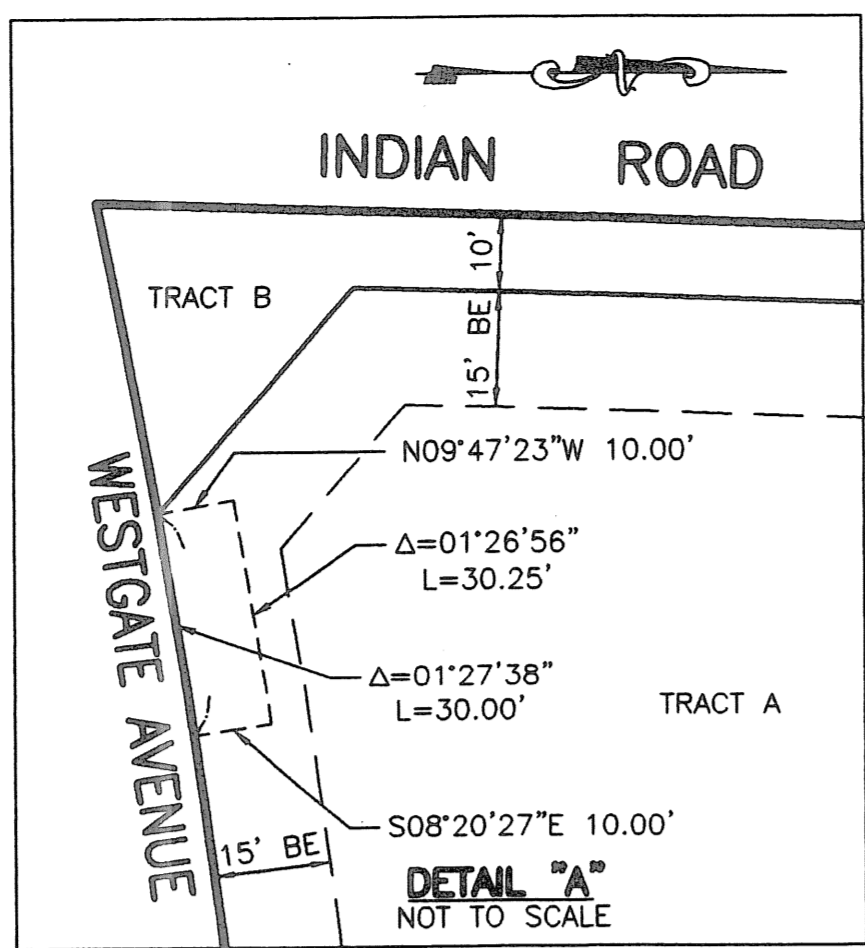


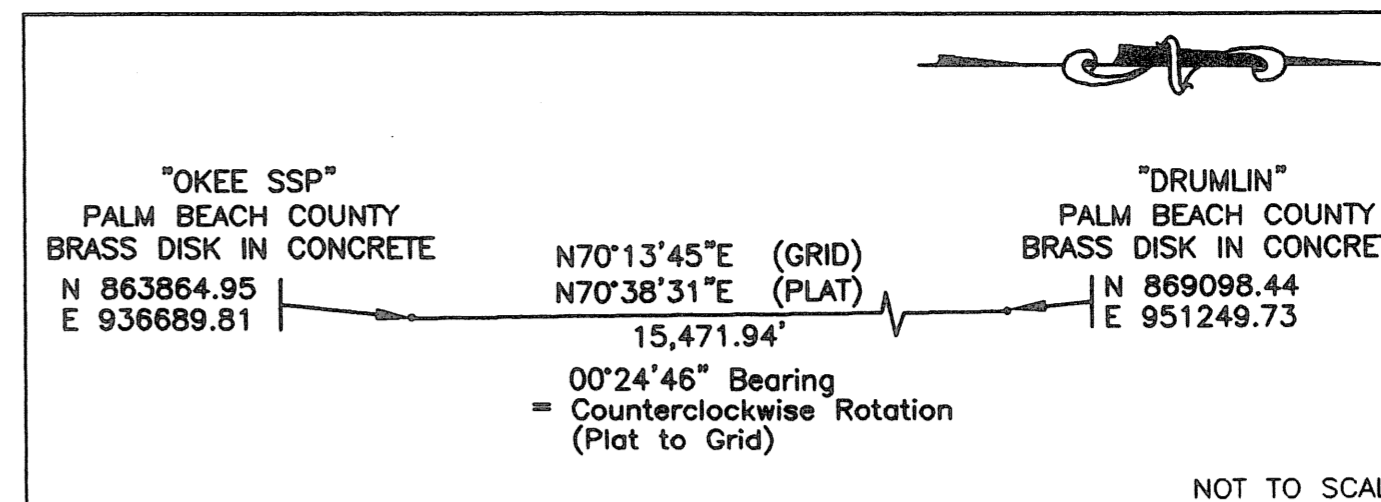
MERCEDES BENZ OF PALM BEACH, M.U.P.D.

BEING IN THE NORTHEAST ONE-QUARTER OF SECTION 25, TOWNSHIP 43 SOUTH, RANGE 42 EAST, PALM BEACH COUNTY, FLORIDA
SHEET 2 OF 2



LEGEND

- C CENTERLINE
- BE BUFFER EASEMENT
- DE DRAINAGE EASEMENT
- Δ CENTRAL ANGLE
- FPL FLORIDA POWER & LIGHT
- 5/8" IRON REBAR AND CAP LB 048
- L ARC LENGTH
- ORB OFFICIAL RECORD BOOK
- PG PAGE
- PB PLAT BOOK
- PBCO PALM BEACH COUNTY
- 4"x4" CONCRETE PERMANENT REFERENCE MONUMENT LB 048
- R CURVE RADIUS
- R/PB ROAD PLAT BOOK
- R/W RIGHT-OF-WAY
- UE UTILITY EASEMENT



NOTES:

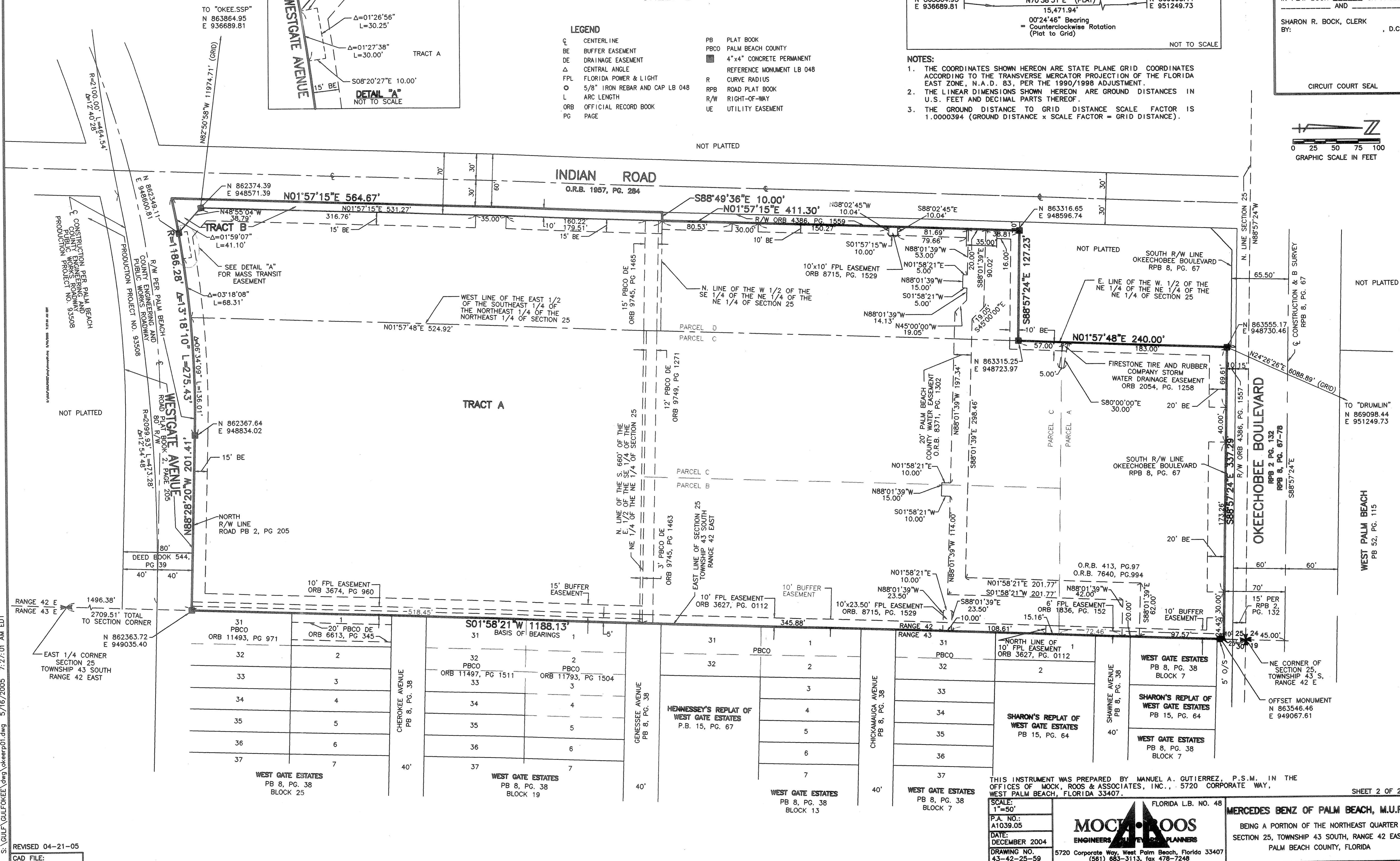
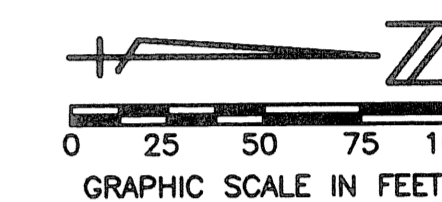
- THE COORDINATES SHOWN HEREON ARE STATE PLANE GRID COORDINATES ACCORDING TO THE TRANSVERSE MERCATOR PROJECTION OF THE FLORIDA EAST ZONE, N.A.D. 83, PER THE 1990/1998 ADJUSTMENT.
- THE LINEAR DIMENSIONS SHOWN HEREON ARE GROUND DISTANCES IN U.S. FEET AND DECIMAL PARTS THEREOF.
- THE GROUND DISTANCE TO GRID DISTANCE SCALE FACTOR IS 1.0000394 (GROUND DISTANCE x SCALE FACTOR = GRID DISTANCE).

STATE OF FLORIDA
COUNTY OF PALM BEACH

THIS PLAT WAS FILED FOR RECORD THIS DAY OF AD, 2005 AND DULY RECORDED IN PLAT BOOK ON PAGES AND

SHARON R. BOCK, CLERK BY: . D.C.

CIRCUIT COURT SEAL



SUBDIVISION MERCEDES BENZ OF PALM BEACH
PAGE 91
BLOCK 105
FLOOD ZONE B
CLAS # 31
ZONING MUPD
ZONING 33404
TAB 410
FUD NAME

S:\GULF\GULFOKEE\dwg\okeerp01.dwg 5/16/2005 7:27:01 AM EDT

REVISED 04-21-05
CAD FILE:
GULFOKEE\OKEERP01

THIS INSTRUMENT WAS PREPARED BY MANUEL A. GUTIERREZ, P.S.M., IN THE OFFICES OF MOCK, ROOS & ASSOCIATES, INC., 5720 CORPORATE WAY, WEST PALM BEACH, FLORIDA 33407.

SCALE:
1"=50'
P.A. NO.:
A1039.05
DATE:
DECEMBER 2004
DRAWING NO.:
43-42-25-59

FLORIDA L.B. NO. 48
MOCK ROOS
ENGINEERS PLANNERS
5720 Corporate Way, West Palm Beach, Florida 33407
(561) 683-3113, fax 478-7248

MERCEDES BENZ OF PALM BEACH, M.U.P.D.
BEING A PORTION OF THE NORTHEAST QUARTER SECTION 25, TOWNSHIP 43 SOUTH, RANGE 42 EAST, PALM BEACH COUNTY, FLORIDA

SHEET 2 OF 2