

CASA DEL SOL OF TEQUESTA

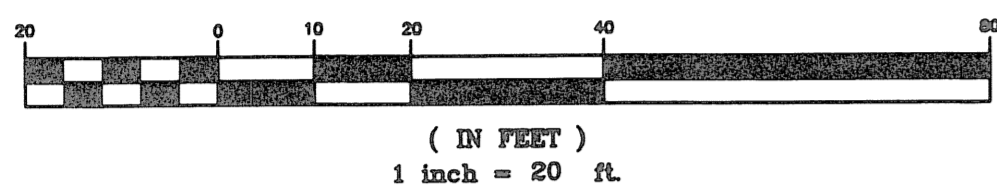
LYING IN SECTION 30, TOWNSHIP 40 SOUTH, RANGE 43 EAST,
VILLAGE OF TEQUESTA, PALM BEACH COUNTY, FLORIDA

JUNE 2005

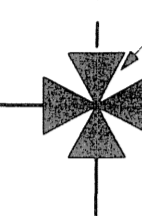
LEGEND

- SET 4x4 PERMANENT REFERENCE MONUMENT (P.R.M.) LS # 2439
- TWP TOWNSHIP
- RNG RANGE
- Sq.Ft. SQUARE FEET
- ORB OFFICIAL RECORD BOOK
- PG. PAGE
- FP&L FLORIDA POWER AND LIGHT
- P.O.C. POINT OF COMMENCEMENT
- P.O.B. POINT OF BEGINNING
- R RADIUS
- D DELTA ANGLE
- A ARC LENGTH
- R.P.B. ROAD PLAT BOOK
- F.D.O.T. FLORIDA DEPARTMENT OF TRANSPORTATION

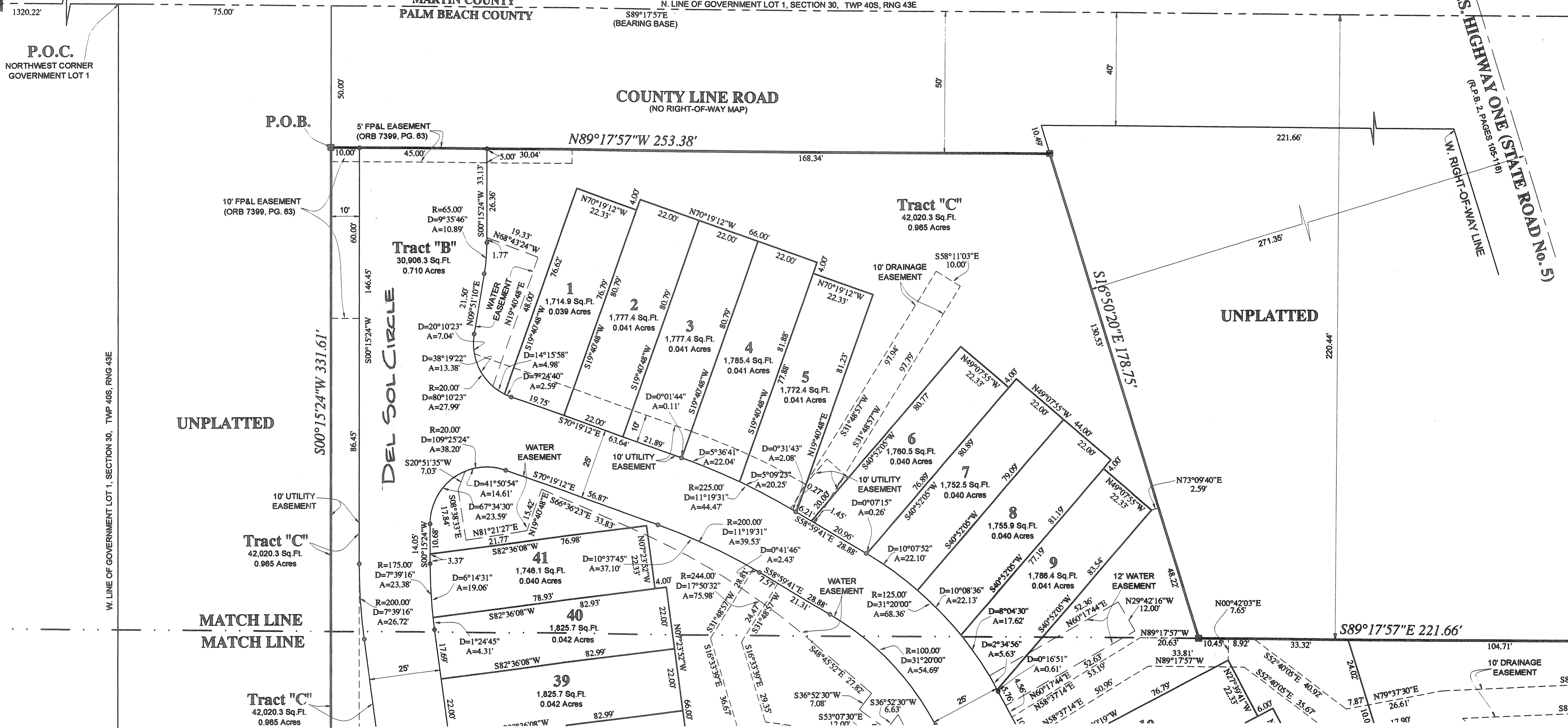
GRAPHIC SCALE



NORTHWEST CORNER
SECTION 30, TWP 40S, RNG 43E
PALM BEACH COUNTY
BRASS DISC



P.O.C.
NORTHWEST CORNER
GOVERNMENT LOT 1



SHEET 2 OF 4

DAILEY
AND ASSOCIATES, INC.
Surveying and Mapping

112 N. U.S. HIGHWAY NO. 1
TEQUESTA, FLORIDA 33469
PHONE: (561) 746-9424
BUSINESS LICENSE: LB# 2799