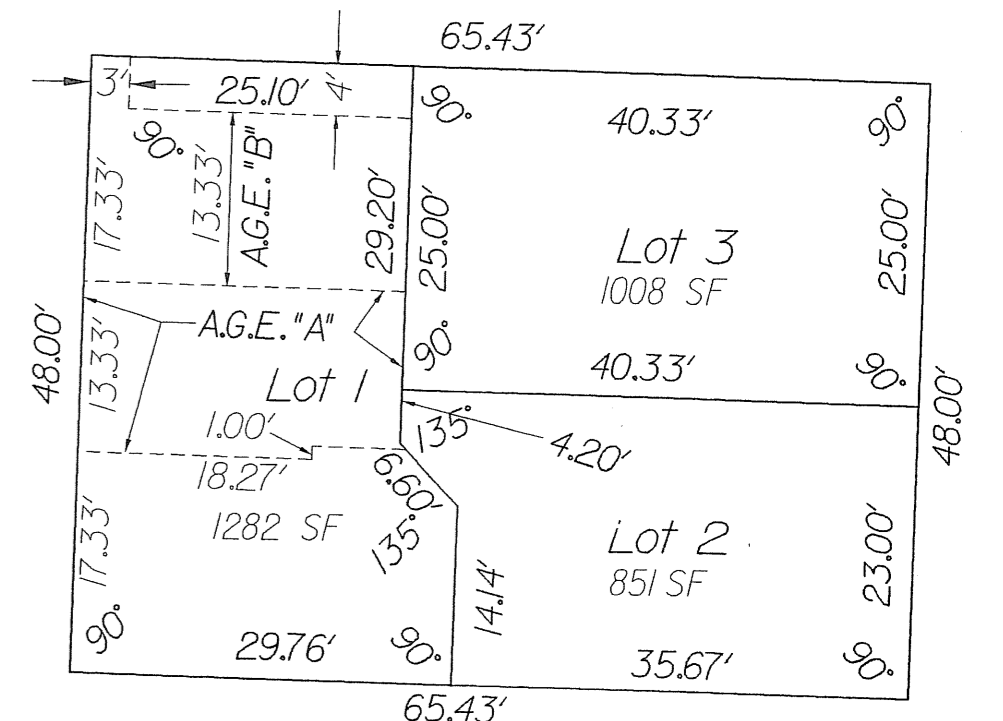


SIERRA BAY REPLAT

A REPLAT OF PARCEL "B" AND LAKE PARCEL L-2, OF "SIERRA - SONOMA BAY"
(P.B. 102, PGS. 149-152, P.B.C.R.) IN THE NORTHEAST ONE-QUARTER
OF SECTION 30, TOWNSHIP 42 SOUTH, RANGE 43 EAST,
CITY OF RIVIERA BEACH, PALM BEACH COUNTY, FLORIDA.
JANUARY, 2005

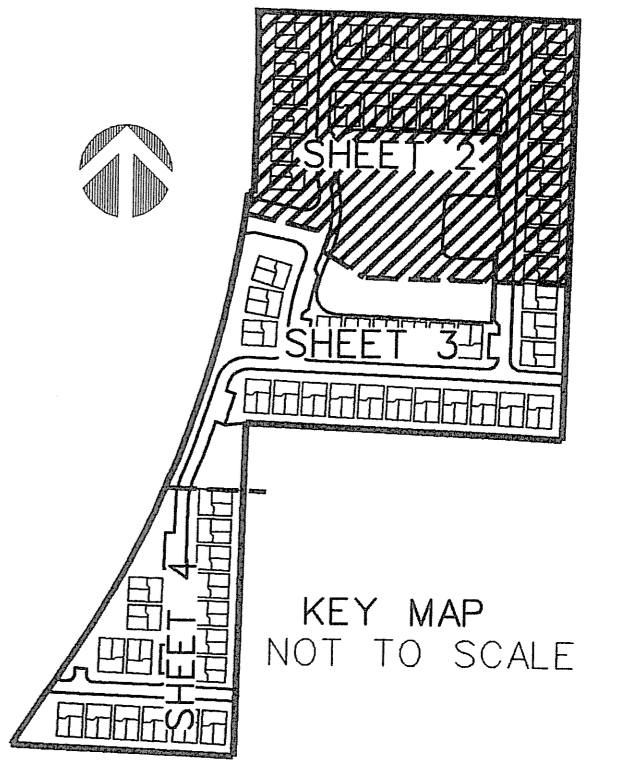
97

SHEET 2 OF 4



BLOCKS #1-67
(TYPICAL)
(NOT TO SCALE)

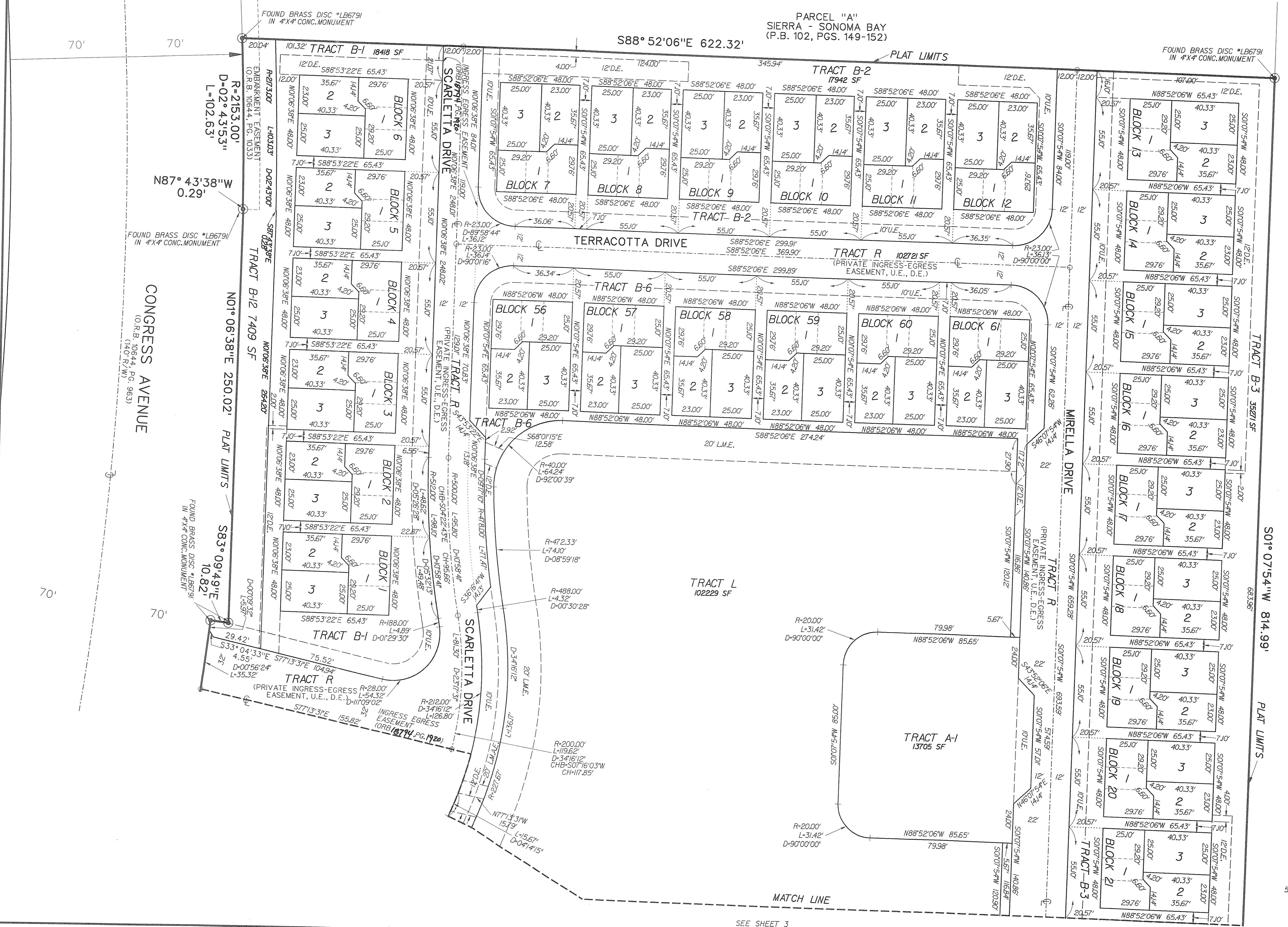
DATURA PARK PLAT NO. 2
(P.B. 27, PGS. 165-166)



KEY MAP
NOT TO SCALE

LEGEND:

- SET P.R.M. (UNLESS OTHERWISE NOTED) - 4" DIAMETER BRASS DISK IN CONC. MON. STAMPED *LB7264 P.C.P.
- ACCESS AND GARAGE EASEMENT
- CHORD BEARING
- CONCRETE
- CORNER
- DELTA (CENTRAL ANGLE)
- DRAINAGE EASEMENT
- IRON ROD
- IRON ROD AND CAP
- ARC LENGTH
- LICENSED BUSINESS
- LICENSED SURVEYOR
- LAKE MAINTENANCE EASEMENT
- LAKE MAINTENANCE ACCESS EASEMENT
- LAKE WORTH DRAINAGE DISTRICT
- MONUMENT
- OFFICIAL RECORDS BOOK
- NON-RADIAL
- PLAT BOOK
- PALM BEACH COUNTY RECORDS
- PAGE
- PERMANENT CONTROL POINT
- POINT OF BEGINNING
- POINT OF COMMENCEMENT
- PERMANENT REFERENCE MONUMENT
- PROFESSIONAL SURVEYOR & MAPPER
- PLANNED UNIT DEVELOPMENT
- RADIUS
- ROOF ENCROACHMENT EASEMENT
- RIGHT-OF-WAY
- SECTION
- SQUARE FEET
- S.F.W.M.D.
- SOUTH FLORIDA WATER MANAGEMENT DISTRICT
- UTILITY EASEMENT



SEE SHEET 3