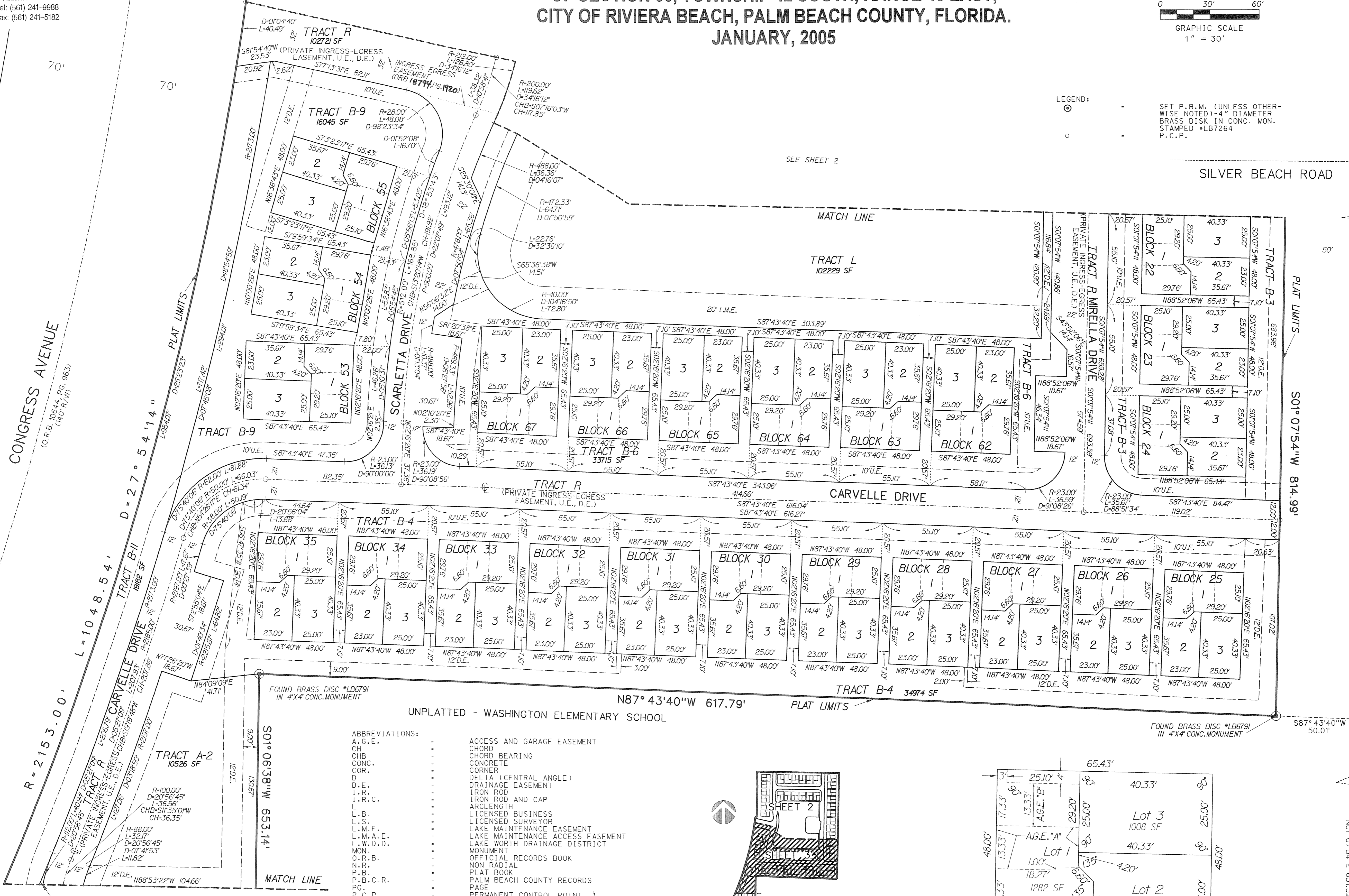
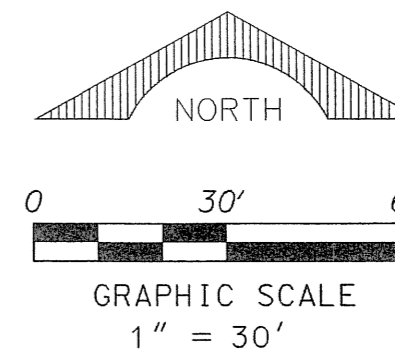


PERIMETER

SURVEYING & MAPPING
 Certificate of Authorization No. LB7264
 Prepared by: Jeff S. Hodapp, P.S.M.
 951 Broken Sound Parkway, Suite 320
 Boca Raton, Florida 33487
 Tel: (561) 241-9988
 Fax: (561) 241-5182

SIERRA BAY REPLAT

A REPLAT OF PARCEL "B" AND LAKE PARCEL L-2, OF "SIERRA - SONOMA BAY"
 (P.B. 102, PGS. 149-152, P.B.C.R.) IN THE NORTHEAST ONE-QUARTER
 OF SECTION 30, TOWNSHIP 42 SOUTH, RANGE 43 EAST,
 CITY OF RIVIERA BEACH, PALM BEACH COUNTY, FLORIDA.
 JANUARY, 2005



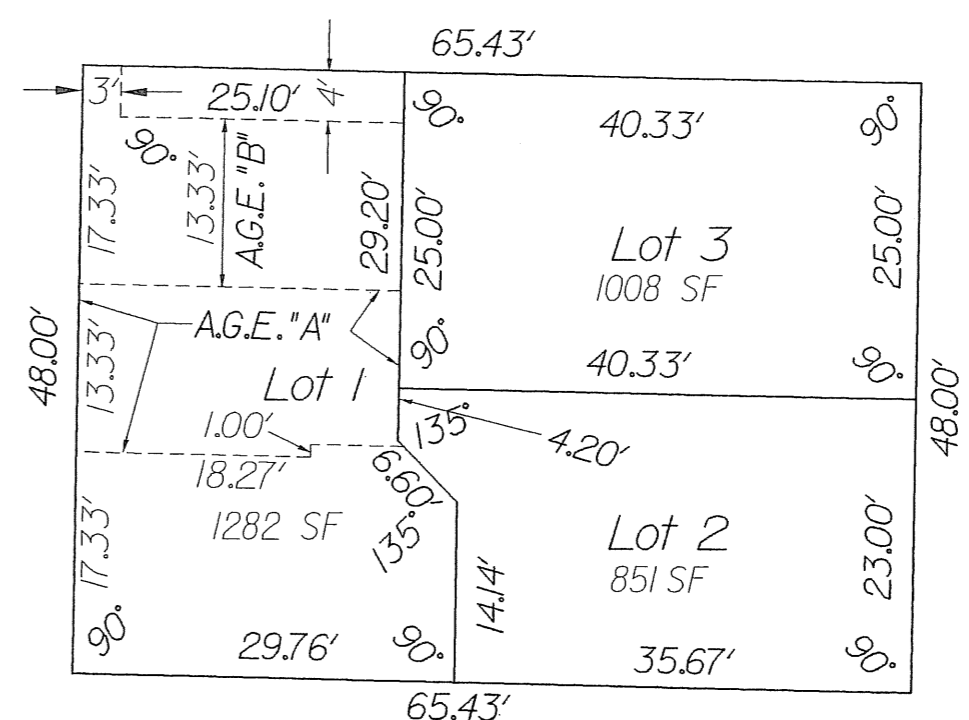
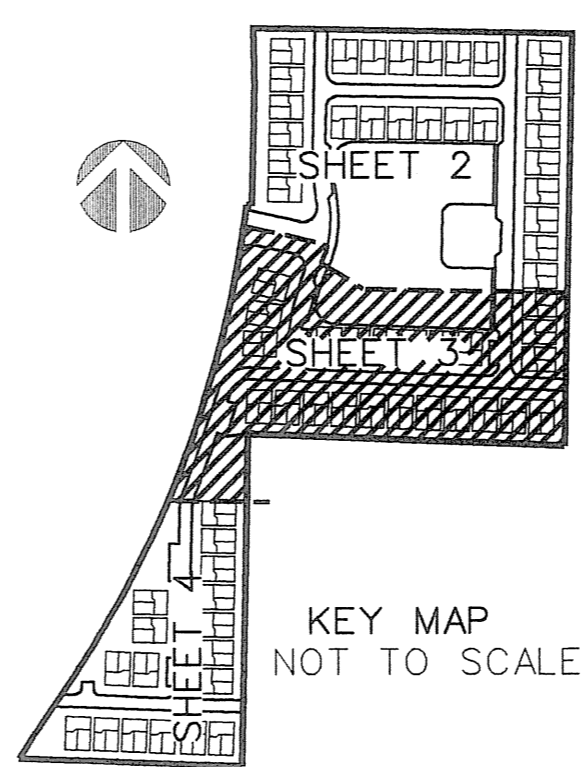
LEGEND:
 SET P.R.M. (UNLESS OTHERWISE NOTED) - 4" DIAMETER BRASS DISK IN CONC. MON. STAMPED *LB7264 P.C.P.

N.E. CORNER NE 1/4 SECTION 30-42-43 FOUND 9/8" I.R. (NO ID)

DATURA PARK PLAT NO. 1 (P.B. 27, PG. 107)

N 07° 54' E 2605.99' R 2606.39' N
 E LINE NE 1/4 SECTION 30-42-43

- ABBREVIATIONS:
- A.G.E. ACCESS AND GARAGE EASEMENT
 - CH CHORD BEARING
 - CONC. CONCRETE
 - COR. CORNER
 - DELTA (CENTRAL ANGLE)
 - DRAINAGE EASEMENT
 - I.R. IRON ROD
 - I.R.C. IRON ROD AND CAP
 - ARCLNGTH ARC LENGTH
 - L.B. LICENSED BUSINESS
 - L.S. LICENSED SURVEYOR
 - L.M.E. LAKE MAINTENANCE EASEMENT
 - L.M.A.E. LAKE MAINTENANCE ACCESS EASEMENT
 - L.W.D.D. LAKE WORTH DRAINAGE DISTRICT
 - MON. MONUMENT
 - O.R.B. OFFICIAL RECORDS BOOK
 - NON-RADIAL NON-RADIAL
 - PLAT BOOK PLAT BOOK
 - P.B.C.R. PALM BEACH COUNTY RECORDS
 - P.C.P. PERMANENT CONTROL POINT
 - P.O.B. POINT OF BEGINNING
 - P.O.C. POINT OF COMMENCEMENT
 - P.R.M. PERMANENT REFERENCE MONUMENT
 - P.S.M. PROFESSIONAL SURVEYOR & MAPPER
 - P.U.D. PLANNED UNIT DEVELOPMENT
 - RADIUS RADIUS
 - R.E.E. ROOF ENCROACHMENT EASEMENT
 - R.I.W. RIGHT-OF-WAY
 - SEC. SECTION
 - SF. SQUARE FEET
 - S.F.W.M.D. SOUTH FLORIDA WATER MANAGEMENT DISTRICT
 - U.E. UTILITY EASEMENT



S.E. CORNER NE 1/4 SECTION 30-42-43 FOUND N&D IN CONC MON.