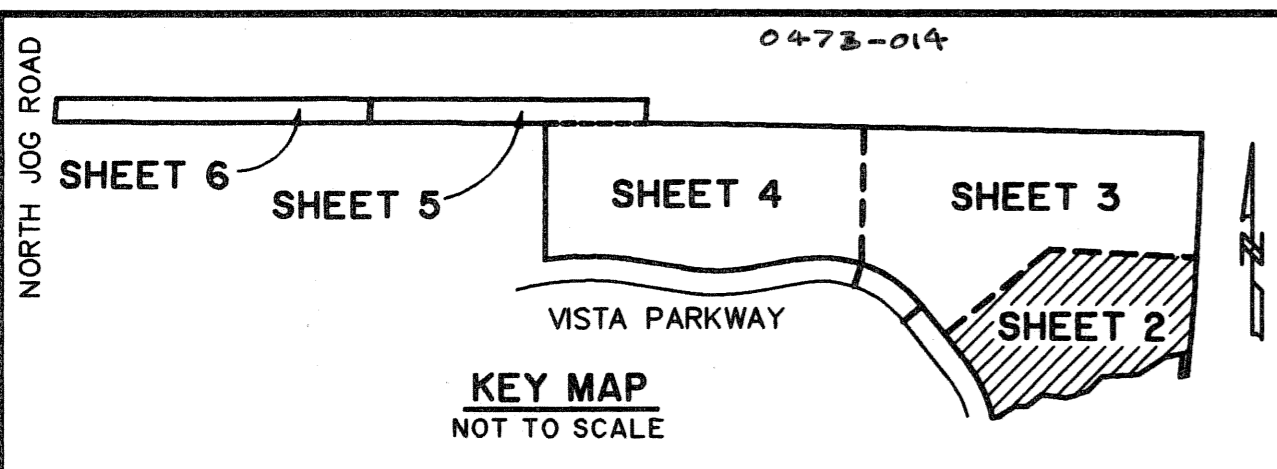


# FIELD OPERATIONS AND SUPPORT CENTER

A PORTION OF A PLANNED INDUSTRIAL PARK DEVELOPMENT  
BEING A PORTION OF SECTION 15, TOWNSHIP 43 SOUTH, RANGE 42 EAST, AND A  
REPLAT OF PARCELS 10, 11, 12, 13 AND 14, VISTA CENTER OF PALM BEACH PLAT 3, AS RECORDED  
IN PLAT BOOK 68, PAGES 128 THROUGH 134, PUBLIC RECORDS OF PALM BEACH COUNTY, FLORIDA.  
LYING IN SECTIONS 15 AND 22, TOWNSHIP 43 SOUTH, RANGE 42 EAST, PALM BEACH COUNTY, FLORIDA.  
SHEET 2 OF 6

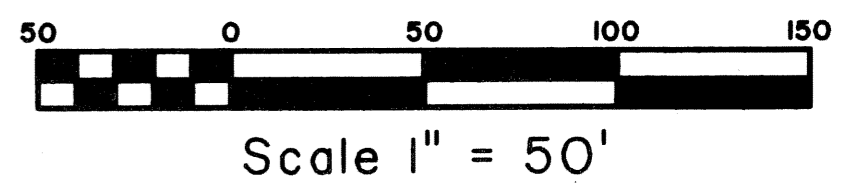
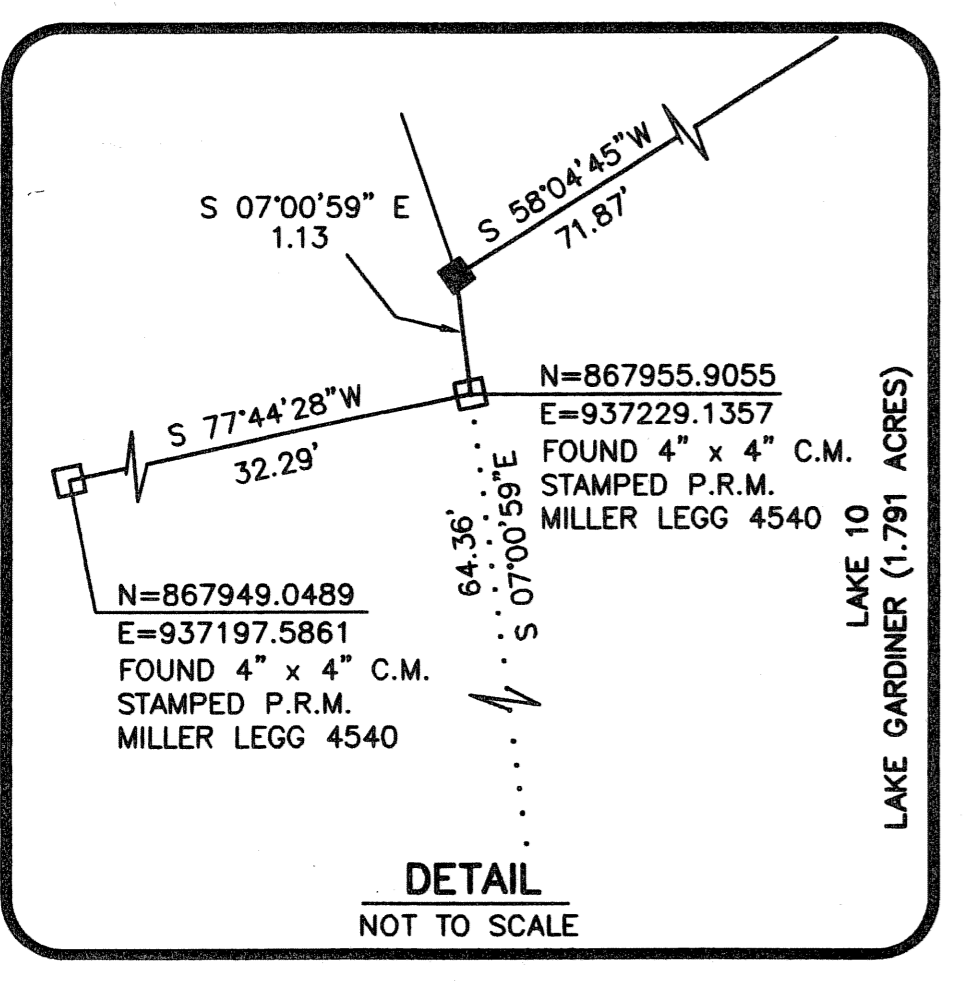
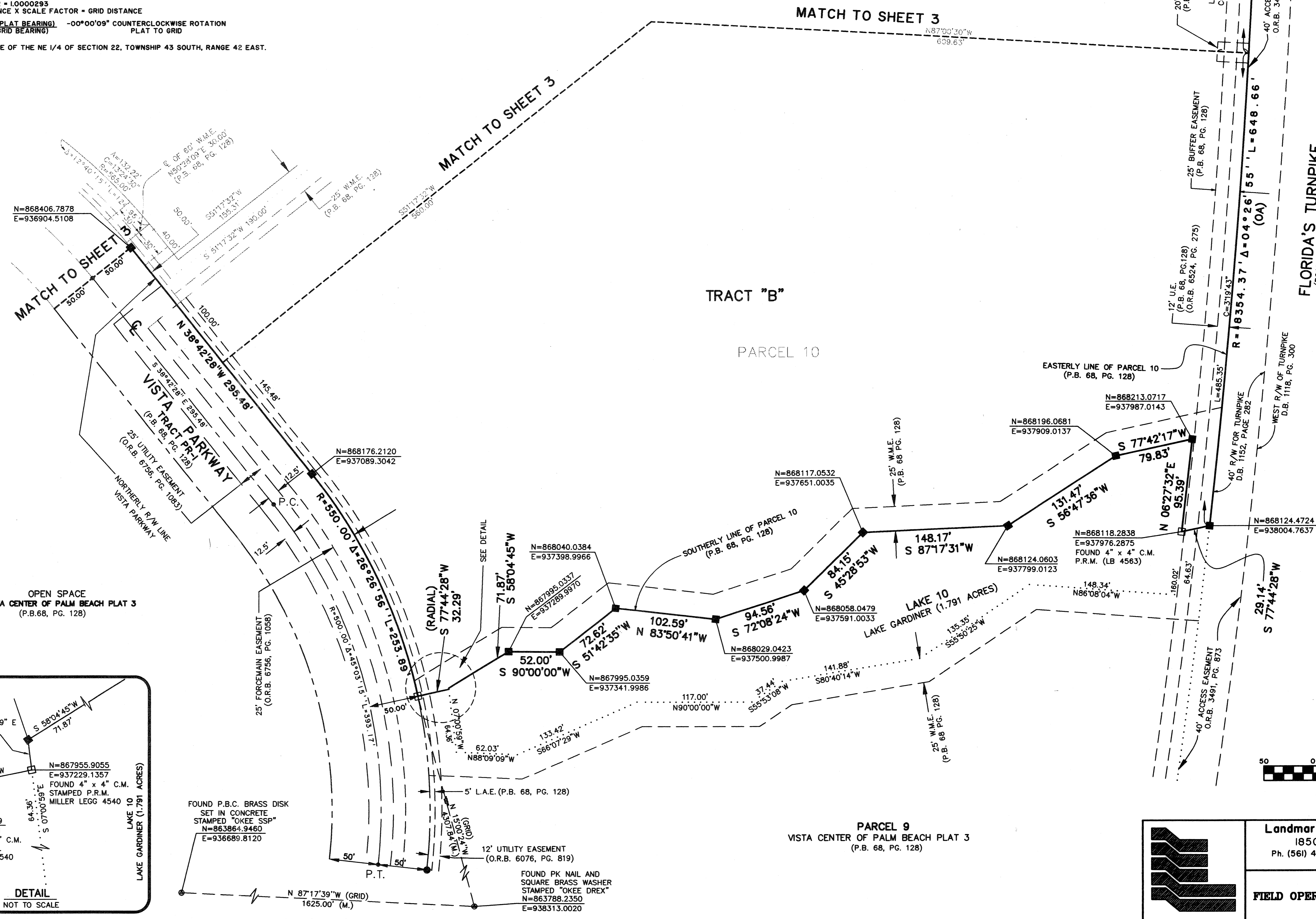


### COORDINATE NOTE:

STATE PLANE COORDINATES SHOWN ARE GRID DATUM, NAD 83 1990  
ADJUSTMENT, FLORIDA EAST ZONE, COORDINATE SYSTEM 1983 STATE  
PLANE, TRANSVERSE MERCATOR PROJECTION  
LINEAR UNIT = US SURVEY FEET  
ALL DISTANCES ARE GROUND  
SCALE FACTOR = 1.0000293  
GROUND DISTANCE X SCALE FACTOR = GRID DISTANCE  
S 88°58'05"E (PLAT BEARING) -00°00'09" COUNTERCLOCKWISE ROTATION  
PLAT TO GRID  
S 88°58'14"E (GRID BEARING)

THE NORTH LINE OF THE NE 1/4 OF SECTION 22, TOWNSHIP 43 SOUTH, RANGE 42 EAST.

STATE OF FLORIDA SS  
COUNTY OF PALM BEACH  
THIS PLAT WAS FILED FOR RECORD AT \_\_\_\_\_  
M., THIS \_\_\_\_\_ DAY OF \_\_\_\_\_ 2005  
AND DULY RECORDED IN PLAT BOOK NO. \_\_\_\_\_  
ON PAGE \_\_\_\_\_  
SHARON R. BOCK  
CLERK & CONTROLLER  
BY \_\_\_\_\_ D.C.



SUBDIVISION FIELD OPERATIONS AND SUPPORT CENTER  
BOOK 105 PAGE 106 FLOOD MAP # 150A  
FLOOD ZONE # 031 ZONING RPD  
QUAD # 031 ZIP CODE 33411  
TAZ # 1 PUB NAME Vista Center

**Landmark Surveying & Mapping Inc.**  
1850 Forest Hill Boulevard  
Ph. (561) 433-5405 Suite 100 W.P.B. Florida  
LB # 4396

**FIELD OPERATIONS AND SUPPORT CENTER**

C:\LEP\13\1065\2556\2556SH12 Tue Oct 26 12:06:55 2004 PLOTTED BY LESLIE C. BISPOTT