

**COUNTY CLERKS
CERTIFICATION**

STATE OF FLORIDA
COUNTY OF PALM BEACH
THIS PLAT WAS FILED FOR RECORD
AT _____ THIS _____ DAY OF
DAY OF _____ 2005, AND DULY
RECORDED IN PLAT BOOK
ON PAGES _____ THROUGH _____

DOROTHY H. WILKEN
CLERK OF THE CIRCUIT COURT

BY: _____
DEPUTY CLERK

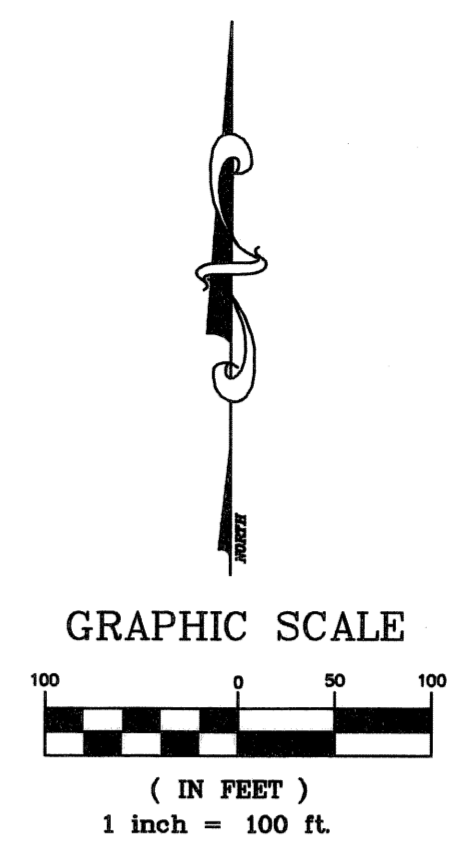
112

**WAL-MART AT LAKE PARK
TOWN OF LAKE PARK,
PALM BEACH COUNTY, FLORIDA**

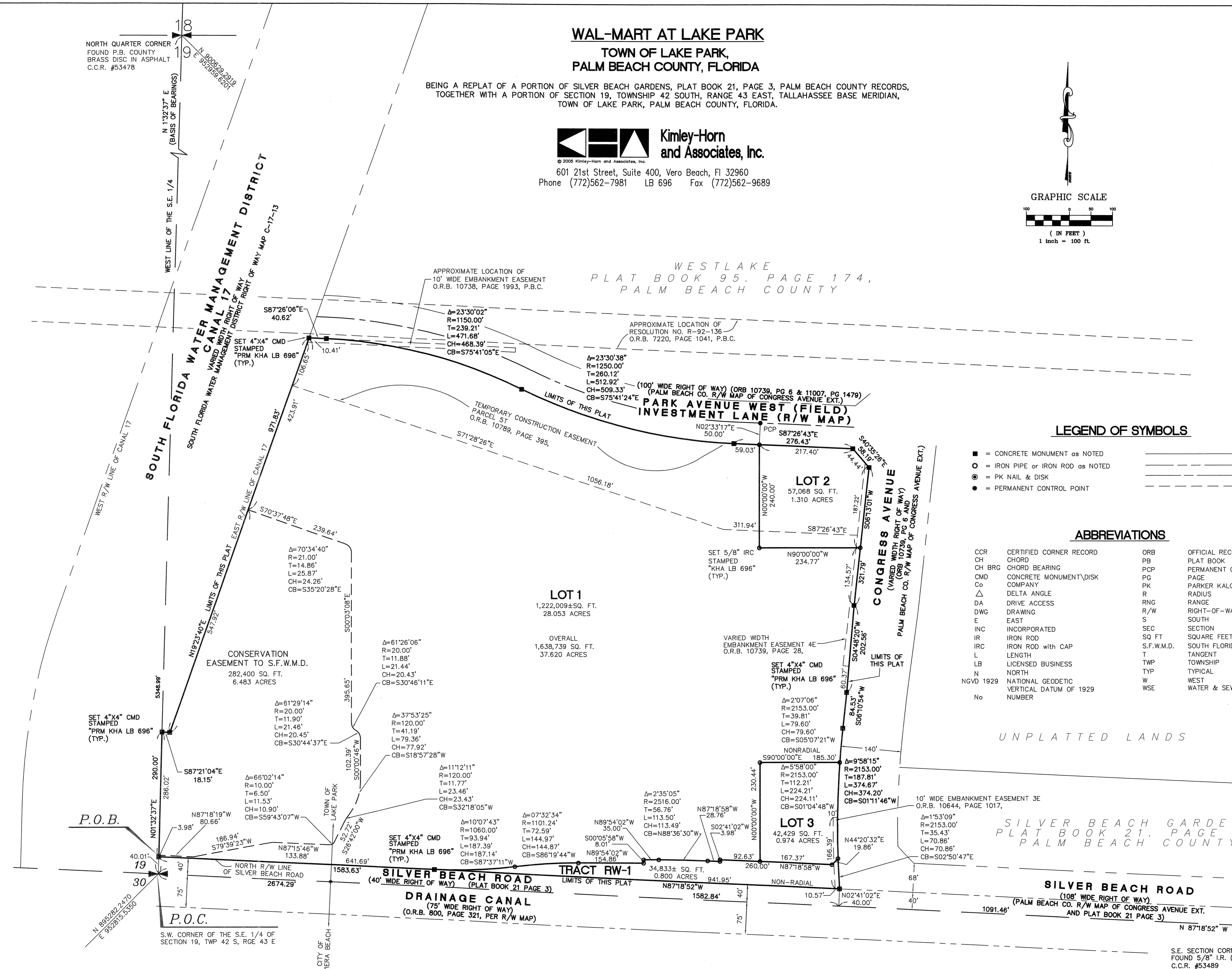
BEING A REPLAT OF A PORTION OF SILVER BEACH GARDENS, PLAT BOOK 21, PAGE 3, PALM BEACH COUNTY RECORDS,
TOGETHER WITH A PORTION OF SECTION 19, TOWNSHIP 42 SOUTH, RANGE 43 EAST, TALLAHASSEE BASE MERIDIAN,
TOWN OF LAKE PARK, PALM BEACH COUNTY, FLORIDA.



601 21st Street, Suite 400, Vero Beach, FL 32960
Phone (772)562-7981 LB 696 Fax (772)562-9689



WESTLAKE
PLAT BOOK 95, PAGE 174,
PALM BEACH COUNTY



LEGEND OF SYMBOLS

- = CONCRETE MONUMENT as NOTED
- = IRON PIPE or IRON ROD as NOTED
- ⊙ = PK NAIL & DISK
- = PERMANENT CONTROL POINT
- = PROPERTY LINE
- - - = RIGHT-OF-WAY LINE
- = CENTERLINE
- - - = EASEMENT LINE

ABBREVIATIONS

- | | | | |
|-----------|--|------------|---|
| CCR | CERTIFIED CORNER RECORD | ORB | OFFICIAL RECORD BOOK |
| CH | CHORD | PB | PLAT BOOK |
| CH BRG | CHORD BEARING | PCP | PERMANENT CONTROL POINT |
| CMD | CONCRETE MONUMENT/DISK | PG | PAGE |
| Co | COMPANY | PK | PARKER KALON |
| Δ | DELTA ANGLE | R | RADIUS |
| DA | DRIVE ACCESS | RNG | RANGE |
| DWG | DRAWING | R/W | RIGHT-OF-WAY |
| E | EAST | S | SOUTH |
| INC | INCORPORATED | SEC | SECTION |
| IR | IRON ROD | SQ FT | SQUARE FEET |
| IRC | IRON ROD with CAP | S.F.W.M.D. | SOUTH FLORIDA WATER MANAGEMENT DISTRICT |
| L | LENGTH | T | TANGENT |
| LB | LICENSED BUSINESS | TWP | TOWNSHIP |
| N | NORTH | TYP | TYPICAL |
| NGVD 1929 | NATIONAL GEODETIC VERTICAL DATUM OF 1929 | W | WEST |
| No | NUMBER | WSE | WATER & SEWER EASEMENT |

UNPLATTED LANDS

SILVER BEACH GARDENS
PLAT BOOK 21, PAGE 3,
PALM BEACH COUNTY

File: 11 Feb 2005-11:44am Plotted by: skurt.Starling@kha.com File: S:\PALM BEACH GARDENS\LAKE PARK\PLAT\PLAT2.dwg
xrefs: images: