

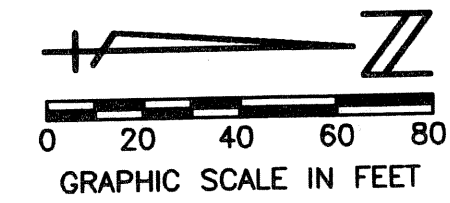
MIRASOL PARCEL FIFTEEN

BEING A REPLAT OF TRACT 15, MIRASOL PLAT SIX, AS RECORDED IN PLAT BOOK 104, PAGES 89 THROUGH 109 OF THE PUBLIC RECORDS OF PALM BEACH COUNTY, FLORIDA PART OF MIRASOL P.C.D. BEING IN SECTION 04, TOWNSHIP 42 SOUTH, RANGE 42 EAST, CITY OF PALM BEACH GARDENS, PALM BEACH COUNTY, FLORIDA SHEET 4 OF 4

STATE OF FLORIDA
COUNTY OF PALM BEACH

THIS PLAT WAS FILED FOR RECORD
THIS _____ DAY OF _____
AD, 2005 AND DULY RECORDED
IN PLAT BOOK _____ ON PAGES
_____ THROUGH _____

SHARON R. BOCK, CLERK & COMPTROLLER
BY: _____, D.C.



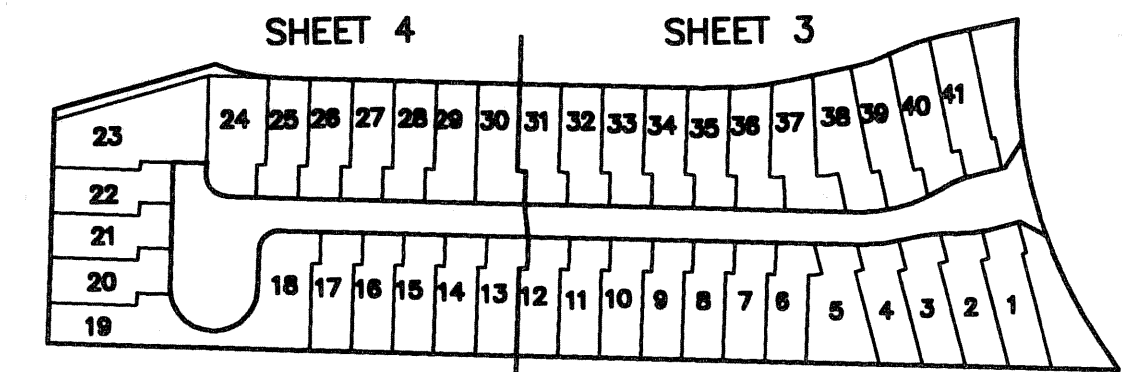
CIRCUIT COURT SEAL

MIRASOL PLAT SIX
PB 104, PGS. 89-109
TRACT P-H

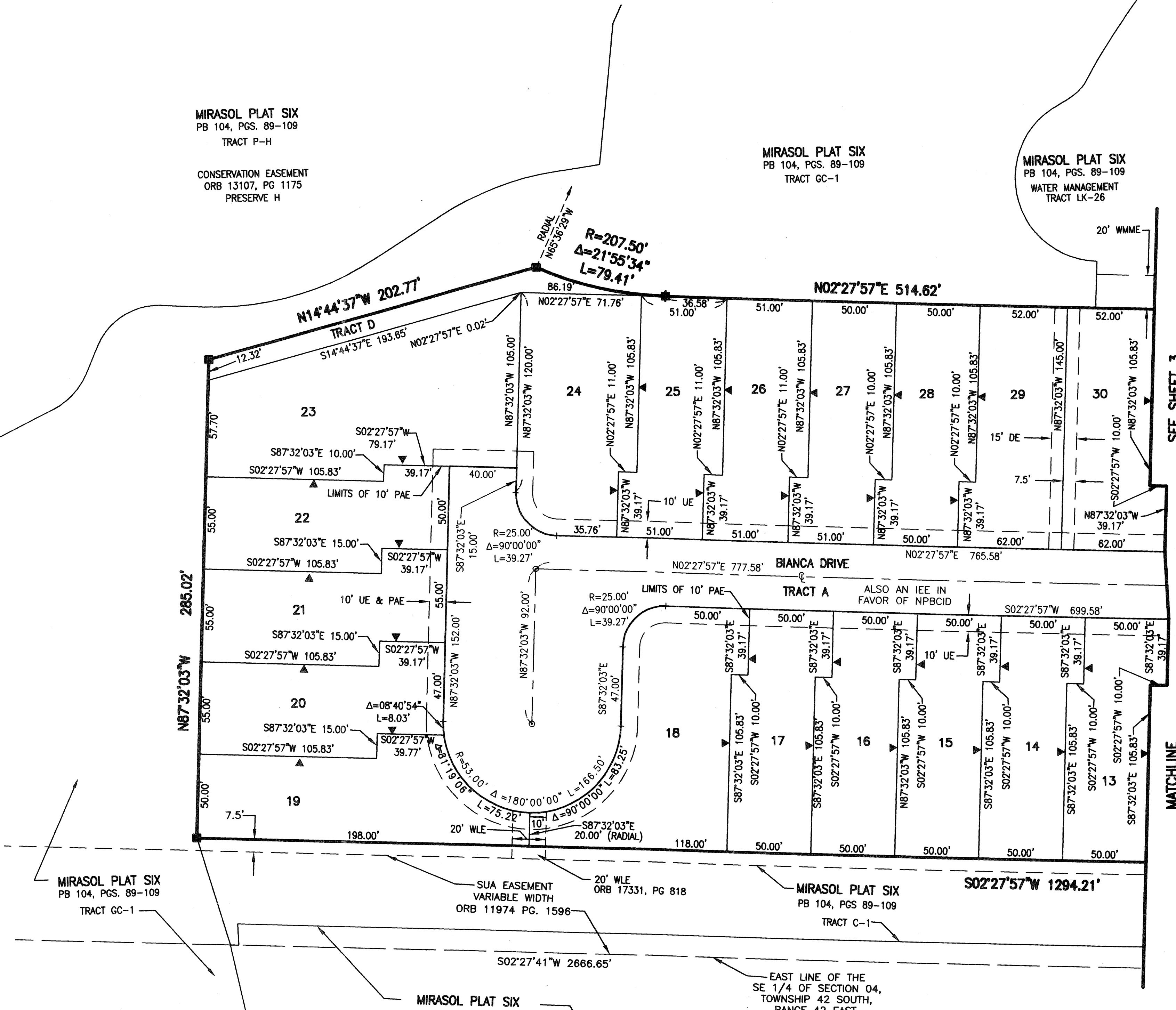
CONSERVATION EASEMENT
ORB 13107, PG 1175
PRESERVE H

MIRASOL PLAT SIX
PB 104, PGS. 89-109
TRACT GC-1

MIRASOL PLAT SIX
PB 104, PGS. 89-109
WATER MANAGEMENT
TRACT LK-26



SHEET LOCATION MAP
NOT TO SCALE



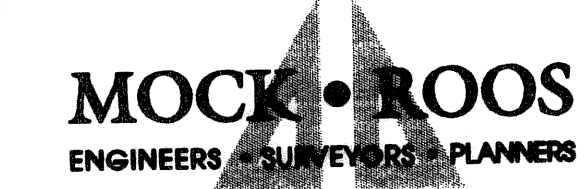
LEGEND

- Δ CENTRAL (DELTA) ANGLE
- CH CHORD & BEARING
- C CENTERLINE
- DE DRAINAGE EASEMENT
- IEE INGRESS-EGRESS EASEMENT
- L ARC LENGTH
- NPBCID NORTHERN PALM BEACH COUNTY IMPROVEMENT DISTRICT
- ORB OFFICIAL RECORD BOOK
- PAE PEDESTRIAN ACCESS EASEMENT
- PB PLAT BOOK
- PC POINT OF CURVATURE
- P.C.D. PLANNED COMMUNITY DEVELOPMENT
- PG PAGE
- PME PRESERVE MAINTENANCE EASEMENT
- R RADIUS
- SLE SEWER LINE EASEMENT
- SUA SEACOAST UTILITY AUTHORITY
- UE UTILITY EASEMENT
- WLE WATER LINE EASEMENT
- WAME WATER MANAGEMENT MAINTENANCE EASEMENT
- PERMANENT REFERENCE MONUMENT
- SET LB 048 (4"x4" CONCRETE)
- PERMANENT CONTROL POINT
- SET LB 048
- ▼ ZERO LOT LINE INDICATOR

PLAT DATE: May 02, 2005 - 1:06pm
S:\Vop\Projects\15\Drawings\15p02.dwg 5/27/2005 1:02:28 PM EDT
MDCS:
XREFS:
REVISED: 04-05-05
CADD FILE:
S:\Vop\Projects\15\Drawings\15p02.dwg
15p02.dwg

THIS INSTRUMENT WAS PREPARED BY MANUEL A. CUTIERREZ, P.S.M. IN THE OFFICES OF MOCK, ROOS & ASSOCIATES, INC., 5720 CORPORATE WAY, WEST PALM BEACH, FLORIDA 33407.

SCALE:
1"=40'
P.A. NO.:
99369.00
DATE:
MAY 2004
DRAWING NO.
42-42-04-175



5720 Corporate Way, West Palm Beach, Florida 33407
(561) 683-3113, fax 478-7248

SHEET 4 OF 4
MIRASOL PARCEL FIFTEEN
BEING A REPLAT OF TRACT 15,
MIRASOL PLAT SIX,
PLAT BOOK 104, PAGES 89 THROUGH 109
PART OF MIRASOL P.C.D.
BEING IN SECTION 04,
TOWNSHIP 42 SOUTH, RANGE 42 EAST,
CITY OF PALM BEACH GARDENS,
PALM BEACH COUNTY, FLORIDA