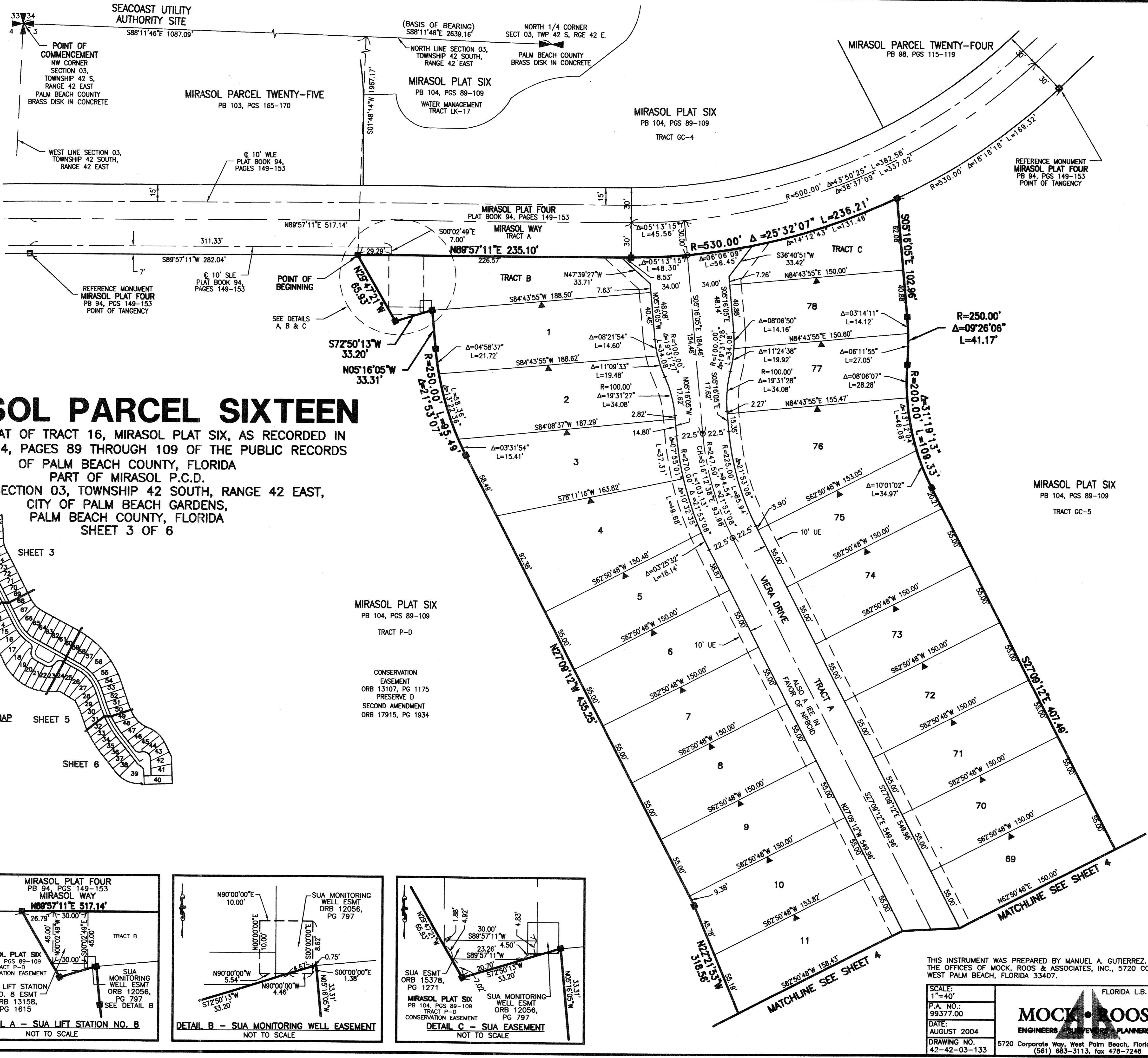
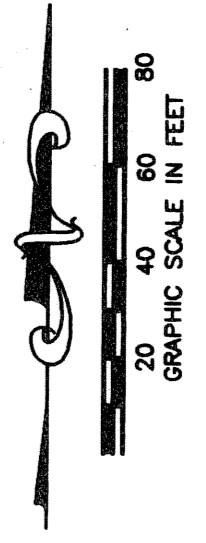


STATE OF FLORIDA  
 COUNTY OF PALM BEACH

THIS PLAT WAS FILED FOR  
 RECORD \_\_\_\_\_ DAY OF \_\_\_\_\_  
 AD, 2005 AND DULY RECORDED  
 IN PLAT BOOK \_\_\_\_\_ ON PAGES  
 \_\_\_\_\_ THROUGH \_\_\_\_\_

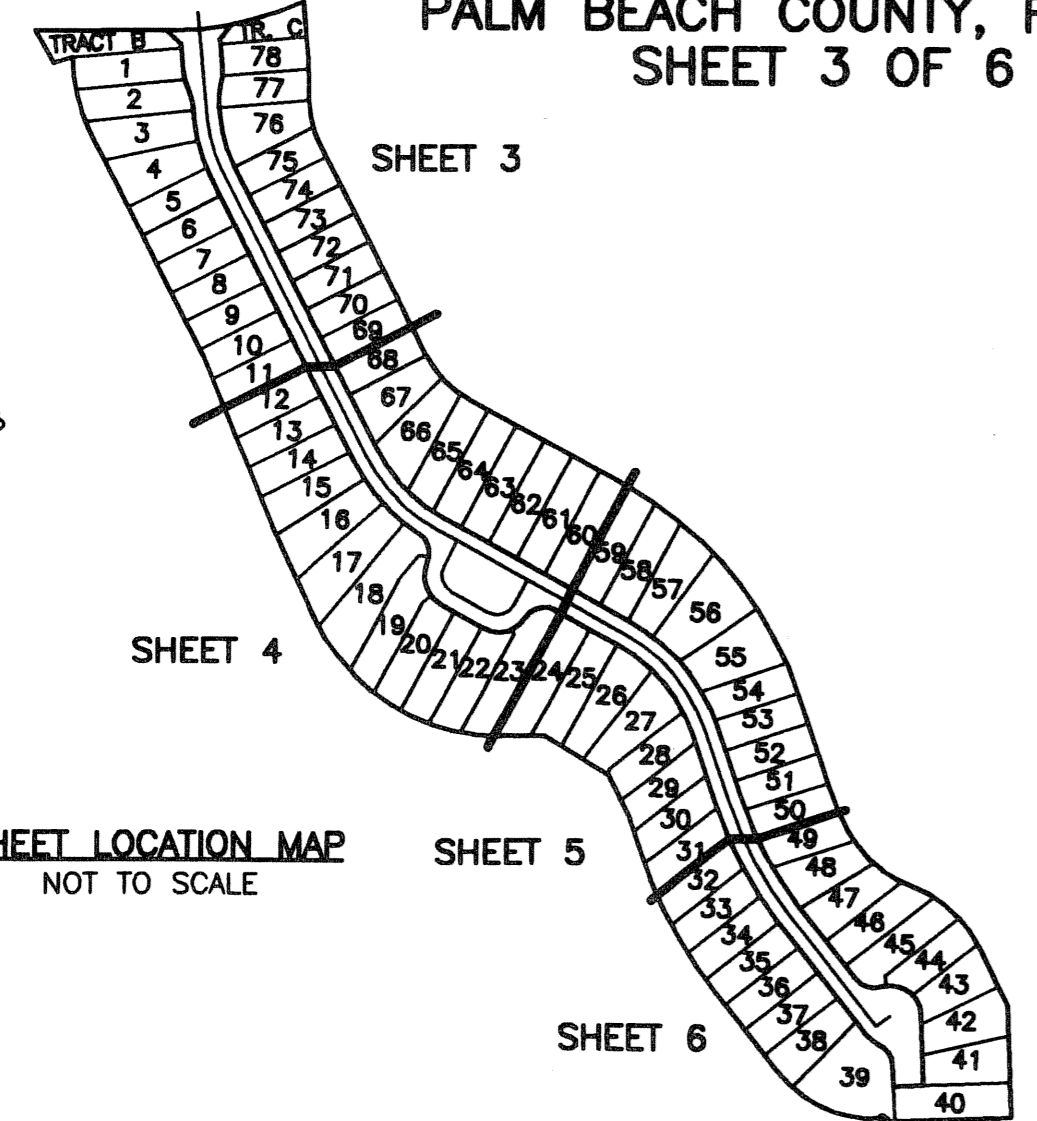
SHARON R. BOCK,  
 CLERK & COMPTROLLER  
 BY: \_\_\_\_\_ D.C.

CIRCUIT COURT SEAL



# MIRASOL PARCEL SIXTEEN

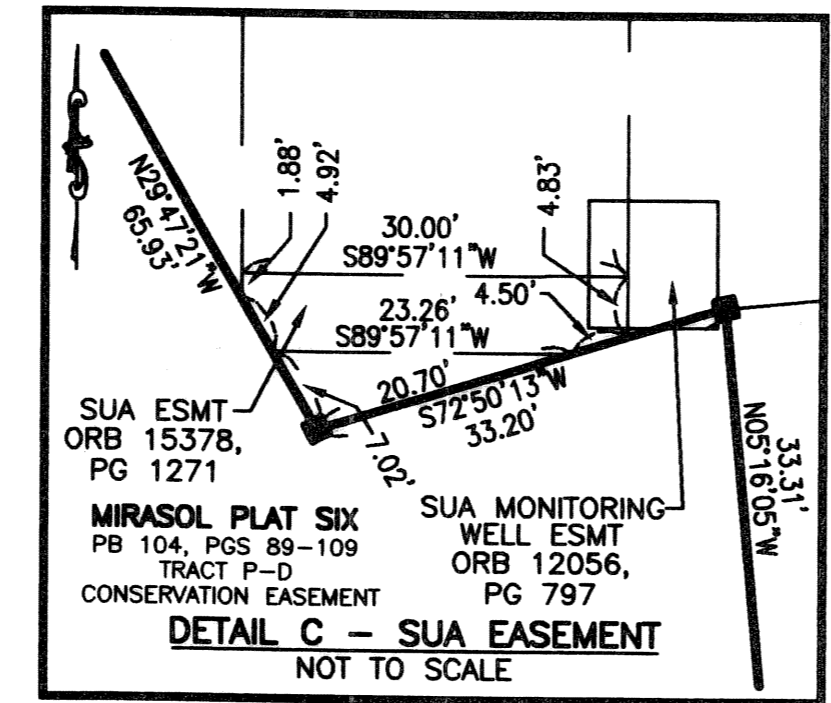
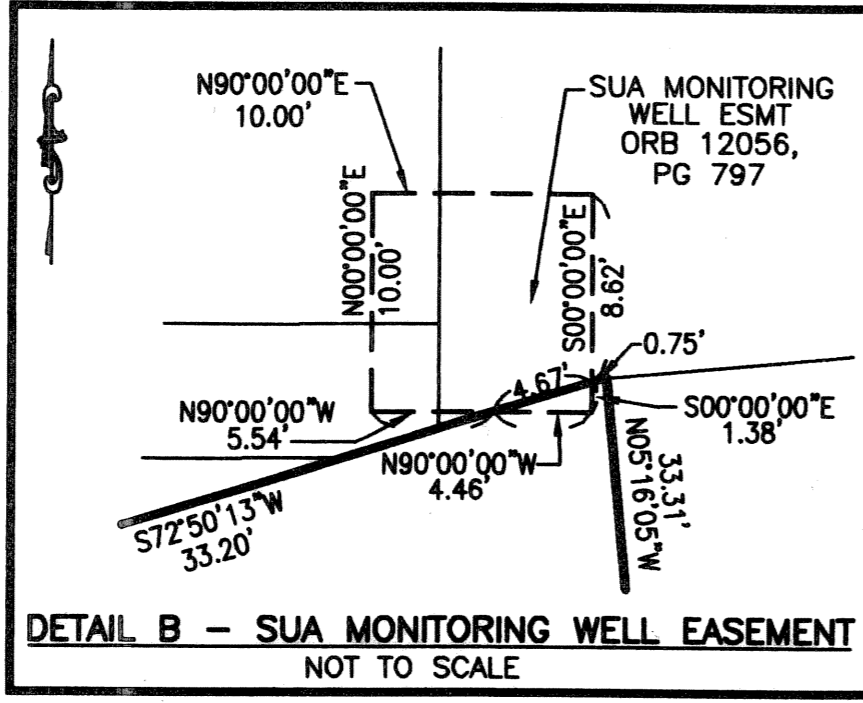
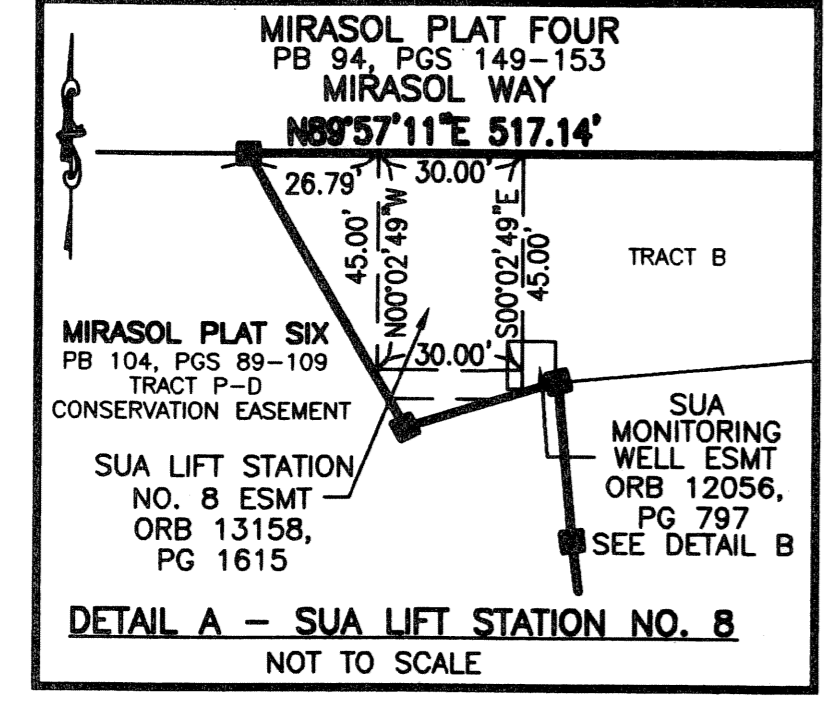
BEING A REPLAT OF TRACT 16, MIRASOL PLAT SIX, AS RECORDED IN  
 PLAT BOOK 104, PAGES 89 THROUGH 109 OF THE PUBLIC RECORDS  
 OF PALM BEACH COUNTY, FLORIDA  
 PART OF MIRASOL P.C.D.  
 BEING IN SECTION 03, TOWNSHIP 42 SOUTH, RANGE 42 EAST,  
 CITY OF PALM BEACH GARDENS,  
 PALM BEACH COUNTY, FLORIDA  
 SHEET 3 OF 6



MIRASOL PLAT SIX  
 PB 104, PGS 89-109  
 TRACT P-D

CONSERVATION  
 EASEMENT  
 ORB 13107, PG 1175  
 PRESERVE D  
 SECOND AMENDMENT  
 ORB 17915, PG 1934

- LEGEND**
- CL CENTERLINE
  - Δ CENTRAL (DELTA) ANGLE
  - CH CHORD
  - DE DRAINAGE EASEMENT
  - ESMT EASEMENT
  - IEE INGRESS-EGRESS EASEMENT
  - L ARC LENGTH
  - NPBCID NORTHERN PALM BEACH COUNTY IMPROVEMENT DISTRICT
  - ORB OFFICIAL RECORD BOOK
  - PAE PEDESTRIAN ACCESS EASEMENT
  - PB PLAT BOOK
  - PG(S) PAGE(S)
  - PERMANENT REFERENCE MONUMENT FOUND LB 048 (4" x 4" CONCRETE)
  - PERMANENT REFERENCE MONUMENT SET LB 048 (4" x 4" CONCRETE)
  - PERMANENT CONTROL POINT SET LB 048
  - PCD PLANNED COMMUNITY DEVELOPMENT
  - PME PRESERVE MAINTENANCE EASEMENT
  - R RADIUS
  - SUA SEACOAST UTILITY AUTHORITY
  - UE UTILITY EASEMENT
  - WLE WATER LINE EASEMENT
  - WMAE WATER MAINTENANCE ACCESS EASEMENT
  - ▼ ZERO LOT LINE INDICATOR



THIS INSTRUMENT WAS PREPARED BY MANUEL A. GUTIERREZ, P.S.M. IN THE OFFICES OF MOCK, ROOS & ASSOCIATES, INC., 5720 CORPORATE WAY, WEST PALM BEACH, FLORIDA 33407.

SCALE:  
 1"=40'  
 P.A. NO.:  
 99377.00  
 DATE:  
 AUGUST 2004  
 DRAWING NO.:  
 42-42-03-133

FLORIDA L.B. NO. 48

**MOCK • ROOS**  
 ENGINEERS • SURVEYORS • PLANNERS

5720 Corporate Way, West Palm Beach, Florida 33407  
 (561) 683-3113, Fax 478-7248

SHEET 3 OF 6

**MIRASOL PARCEL SIXTEEN**  
 BEING A REPLAT OF TRACT 16,  
 MIRASOL PLAT SIX,  
 PLAT BOOK 104, PAGES 89 THROUGH 109  
 PART OF MIRASOL P.C.D.  
 BEING IN SECTION 03,  
 TOWNSHIP 42 SOUTH, RANGE 42 EAST,  
 CITY OF PALM BEACH GARDENS,  
 PALM BEACH COUNTY, FLORIDA

S:\koy\koy\pa16\dwg\pa16rp02.dwg 5/3/2005 8:32:37 AM EDT

REVISED 05-02-05  
 CAD FILE:  
 TAYLPA16\PA16RP02