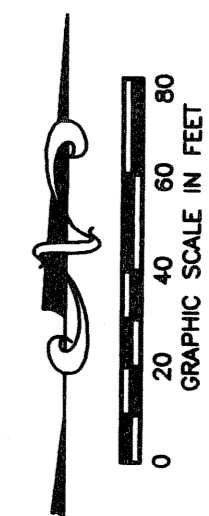


# MIRASOL PARCEL SIXTEEN

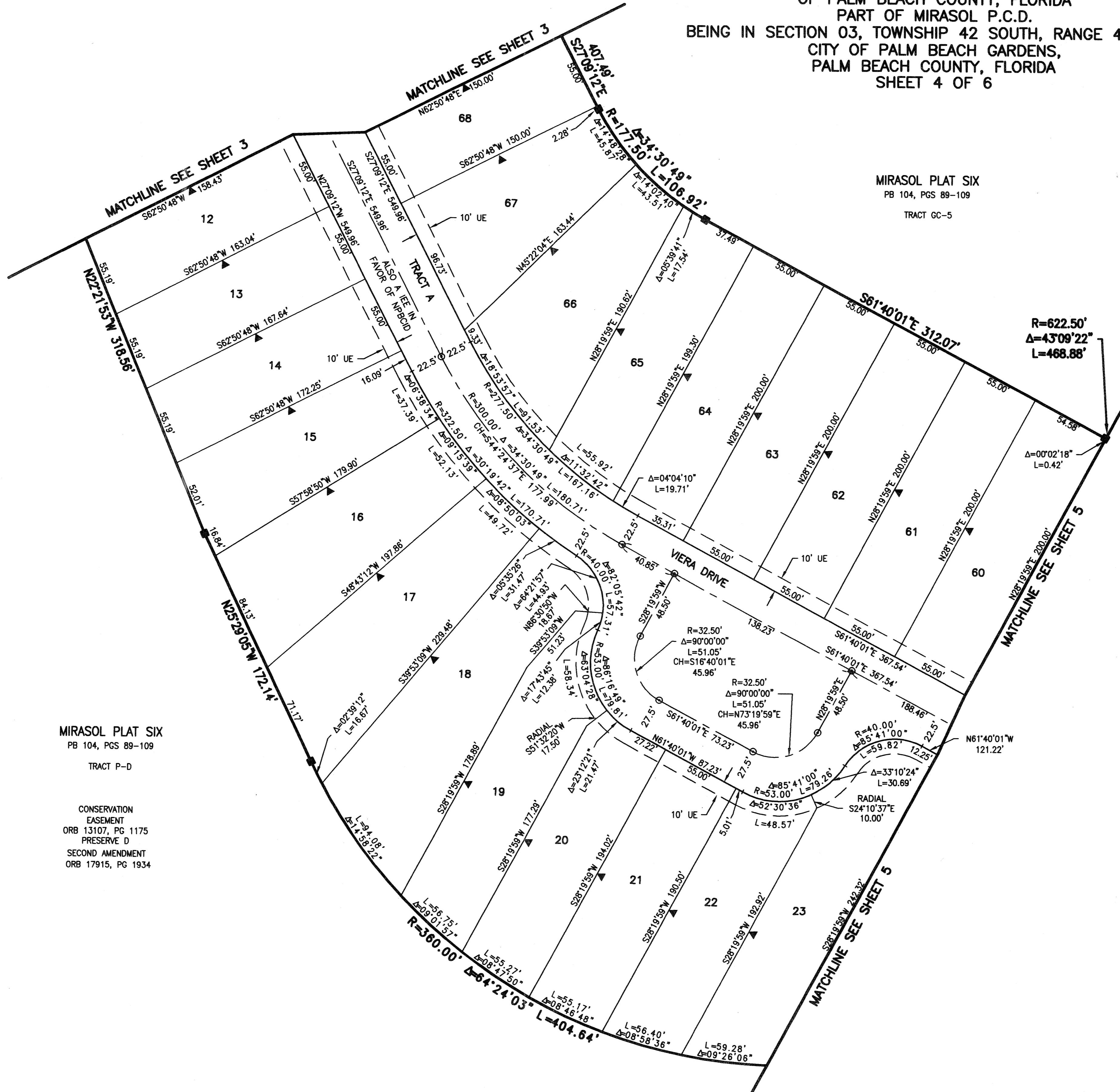
BEING A REPLAT OF TRACT 16, MIRASOL PLAT SIX, AS RECORDED IN PLAT BOOK 104, PAGES 89 THROUGH 109 OF THE PUBLIC RECORDS OF PALM BEACH COUNTY, FLORIDA PART OF MIRASOL P.C.D. BEING IN SECTION 03, TOWNSHIP 42 SOUTH, RANGE 42 EAST, CITY OF PALM BEACH GARDENS, PALM BEACH COUNTY, FLORIDA SHEET 4 OF 6

134

STATE OF FLORIDA  
COUNTY OF PALM BEACH  
THIS PLAT WAS FILED FOR RECORD \_\_\_\_\_ DAY OF \_\_\_\_\_ AD, 2005 AND DULY RECORDED IN PLAT BOOK \_\_\_\_\_ ON PAGES \_\_\_\_\_ THROUGH \_\_\_\_\_  
SHARON R. BOCK,  
CLERK & COMPTROLLER  
BY: \_\_\_\_\_, DC.

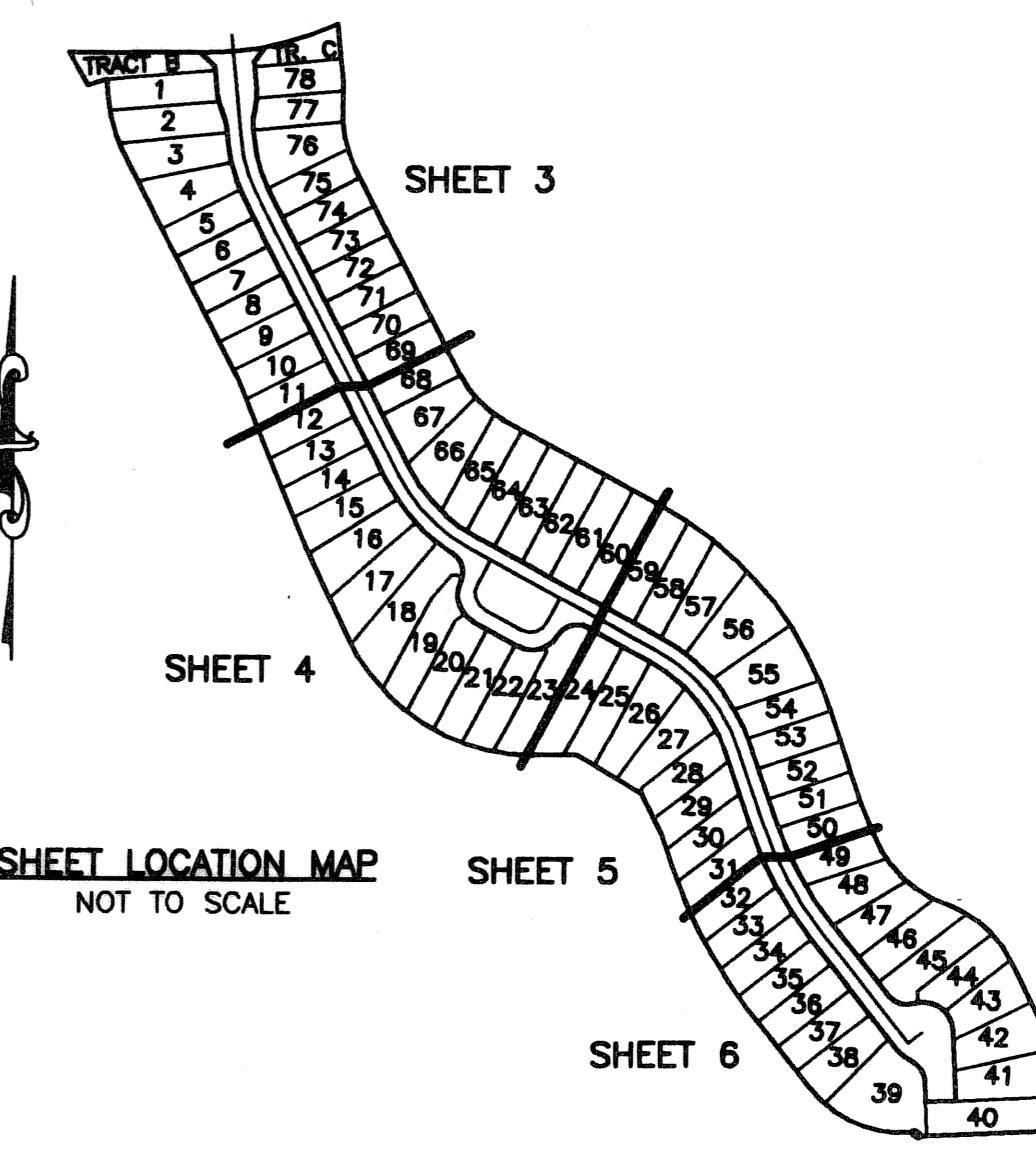


CIRCUIT COURT SEAL



MIRASOL PLAT SIX  
PB 104, PGS 89-109  
TRACT P-D

CONSERVATION EASEMENT  
ORB 13107, PG 1175  
PRESERVE D  
SECOND AMENDMENT  
ORB 17915, PG 1934



THIS INSTRUMENT WAS PREPARED BY MANUEL A. GUTIERREZ, P.S.M. IN THE OFFICES OF MOCK, ROOS & ASSOCIATES, INC., 5720 CORPORATE WAY, WEST PALM BEACH, FLORIDA 33407.

SCALE:  
1"=40'  
P.A. NO.:  
99377.00  
DATE:  
AUGUST 2004  
DRAWING NO.  
42-42-03-133

FLORIDA L.B. NO. 48

**MOCK • ROOS**  
ENGINEERS • SURVEYORS • PLANNERS

5720 Corporate Way, West Palm Beach, Florida 33407  
(561) 663-3113, fax 478-7248

SHEET 4 OF 6

**MIRASOL PARCEL SIXTEEN**  
BEING A REPLAT OF TRACT 16,  
MIRASOL PLAT SIX,  
PLAT BOOK 104, PAGES 89 THROUGH 109  
PART OF MIRASOL P.C.D.  
BEING IN SECTION 03,  
TOWNSHIP 42 SOUTH, RANGE 42 EAST,  
CITY OF PALM BEACH GARDENS,  
PALM BEACH COUNTY, FLORIDA

S:\toy\pa16\dwg\pa16rp02.dwg 5/3/2005 8:32:37 AM EDT

REVISED 04-05-05  
CAD FILE:  
TAYLPA16\PA16RP02