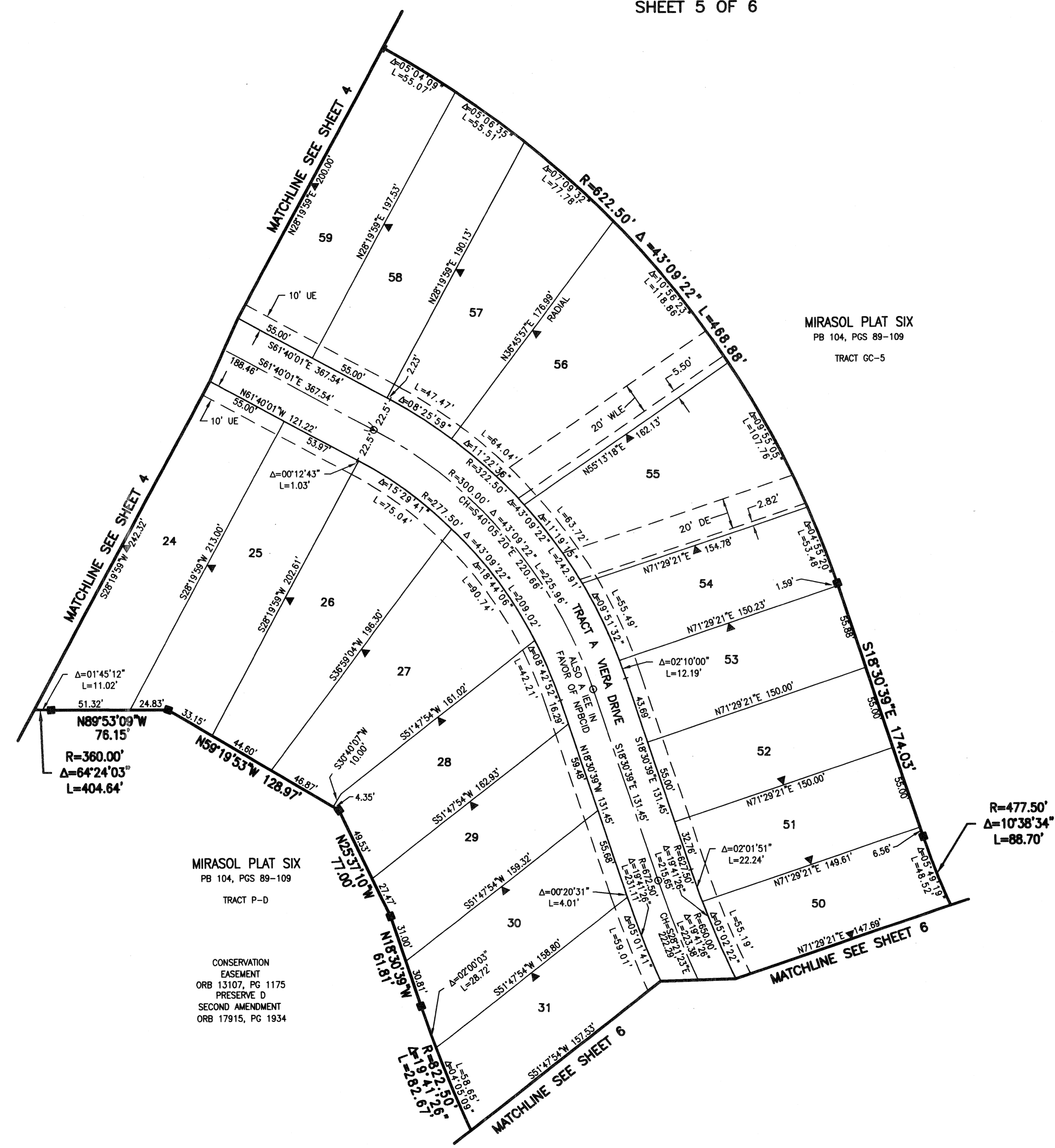
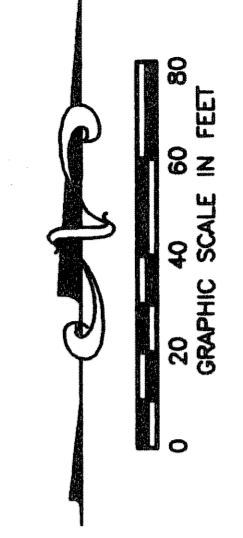


MIRASOL PARCEL SIXTEEN

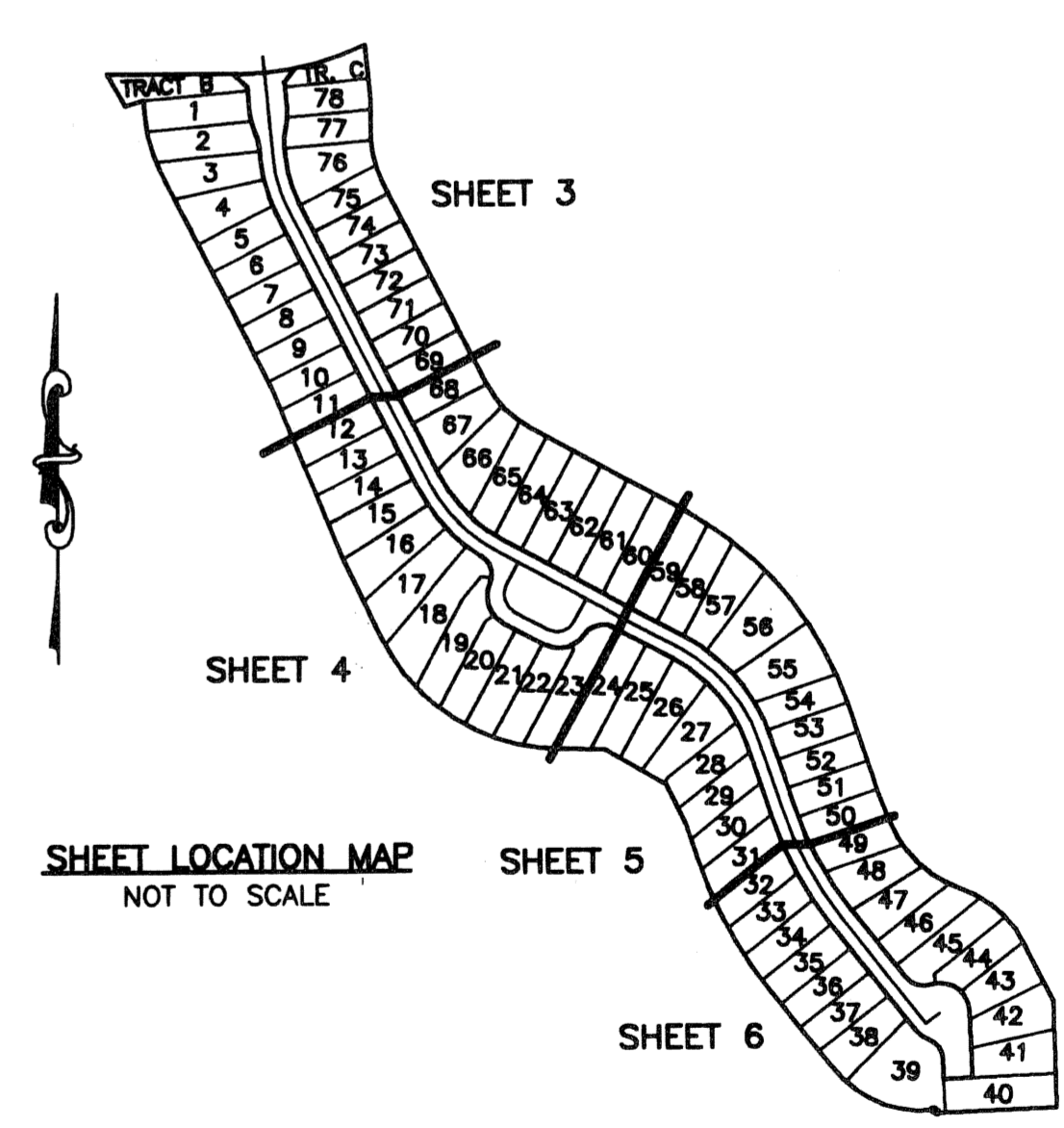
BEING A REPLAT OF TRACT 16, MIRASOL PLAT SIX, AS RECORDED IN
 PLAT BOOK 104, PAGES 89 THROUGH 109 OF THE PUBLIC RECORDS
 OF PALM BEACH COUNTY, FLORIDA
 PART OF MIRASOL P.C.D.
 BEING IN SECTION 03, TOWNSHIP 42 SOUTH, RANGE 42 EAST,
 CITY OF PALM BEACH GARDENS,
 PALM BEACH COUNTY, FLORIDA
 SHEET 5 OF 6

135

STATE OF FLORIDA
 COUNTY OF PALM BEACH
 THIS PLAT WAS FILED FOR
 RECORD _____ DAY OF _____
 AD, 2005 AND DULY RECORDED
 IN PLAT BOOK _____ ON PAGES
 _____ THROUGH _____
 SHARON R. BOCK,
 CLERK & COMPTROLLER
 BY: _____, DC.
 CIRCUIT COURT SEAL



- LEGEND**
- ⊙ CENTERLINE
 - Δ CENTRAL (DELTA) ANGLE
 - CH CHORD
 - DE DRAINAGE EASEMENT
 - ESMT EASEMENT
 - IEE INGRESS-EGRESS EASEMENT
 - L ARC LENGTH
 - NPBCID NORTHERN PALM BEACH COUNTY IMPROVEMENT DISTRICT
 - ORB OFFICIAL RECORD BOOK
 - PAE PEDESTRIAN ACCESS EASEMENT
 - PB PLAT BOOK
 - PG(S) PAGE(S)
 - PERMANENT REFERENCE MONUMENT FOUND LB 048 (4" x 4" CONCRETE)
 - PERMANENT REFERENCE MONUMENT SET LB 048 (4" x 4" CONCRETE)
 - PERMANENT CONTROL POINT SET LB 048
 - PCD PLANNED COMMUNITY DEVELOPMENT
 - PME PRESERVE MAINTENANCE EASEMENT
 - R RADIUS
 - SUA SEACOAST UTILITY AUTHORITY
 - UE UTILITY EASEMENT
 - WLE WATER LINE EASEMENT
 - WMAE WATER MAINTENANCE ACCESS EASEMENT
 - ▼ ZERO LOT LINE INDICATOR



MIRASOL PLAT SIX
 PB 104, PGS 89-109
 TRACT P-D
 CONSERVATION
 EASEMENT
 ORB 13107, PG 1175
 PRESERVE D
 SECOND AMENDMENT
 ORB 17915, PG 1934

THIS INSTRUMENT WAS PREPARED BY MANUEL A. GUTIERREZ, P.S.M. IN THE OFFICES OF MOCK, ROOS & ASSOCIATES, INC., 5720 CORPORATE WAY, WEST PALM BEACH, FLORIDA 33407.

FLORIDA L.B. NO. 48

MOCK • ROOS
 ENGINEERS • SURVEYORS • PLANNERS

5720 Corporate Way, West Palm Beach, Florida 33407
 (561) 683-3113, fax 478-7248

MIRASOL PARCEL SIXTEEN
 BEING A REPLAT OF TRACT 16,
 MIRASOL PLAT SIX,
 PLAT BOOK 104, PAGES 89 THROUGH 109
 PART OF MIRASOL P.C.D.
 BEING IN SECTION 03,
 TOWNSHIP 42 SOUTH, RANGE 42 EAST,
 CITY OF PALM BEACH GARDENS,
 PALM BEACH COUNTY, FLORIDA

SCALE: 1"=40'
 P.A. NO.: 99377.00
 DATE: AUGUST 2004
 DRAWING NO. 42-42-03-133

SHEET 5 OF 6

S:\toy\toy\pa16\dwg\pa16r02.dwg 5/13/2005 8:32:37 AM EDT

REVISED 04-05-05
 CAD FILE:
 TAYLPA16\PA16RPO2