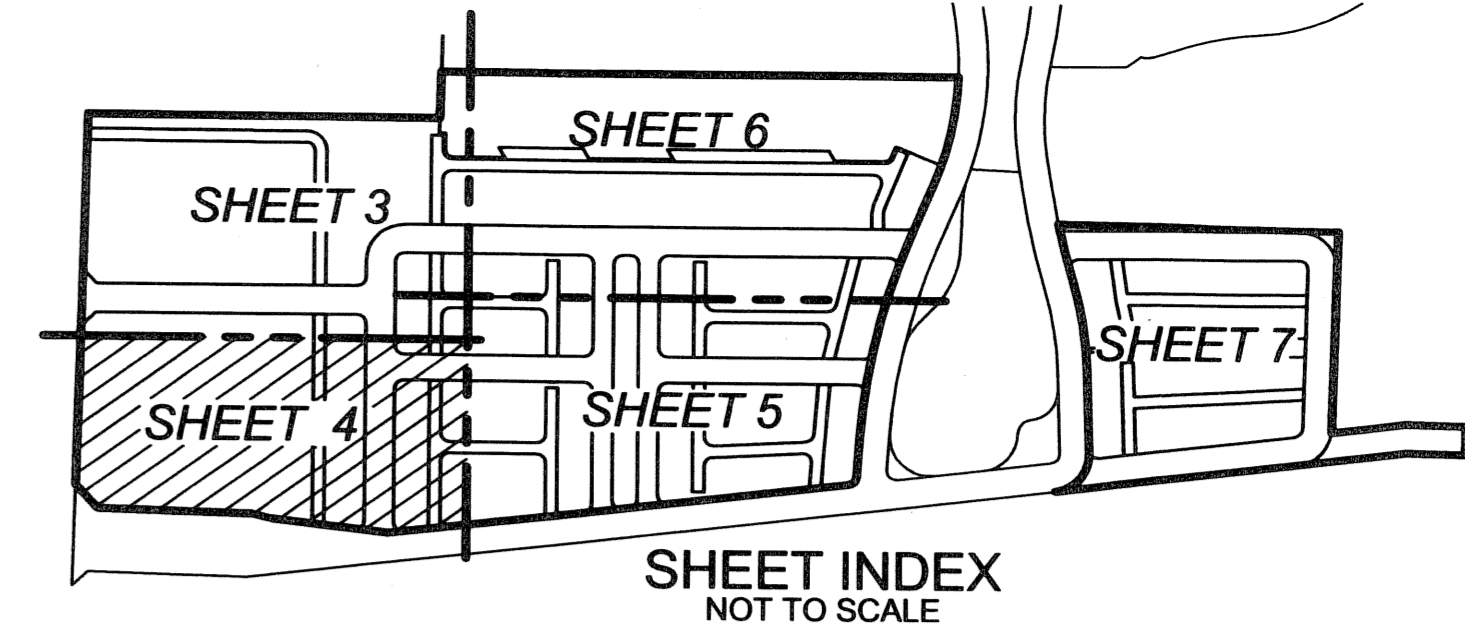
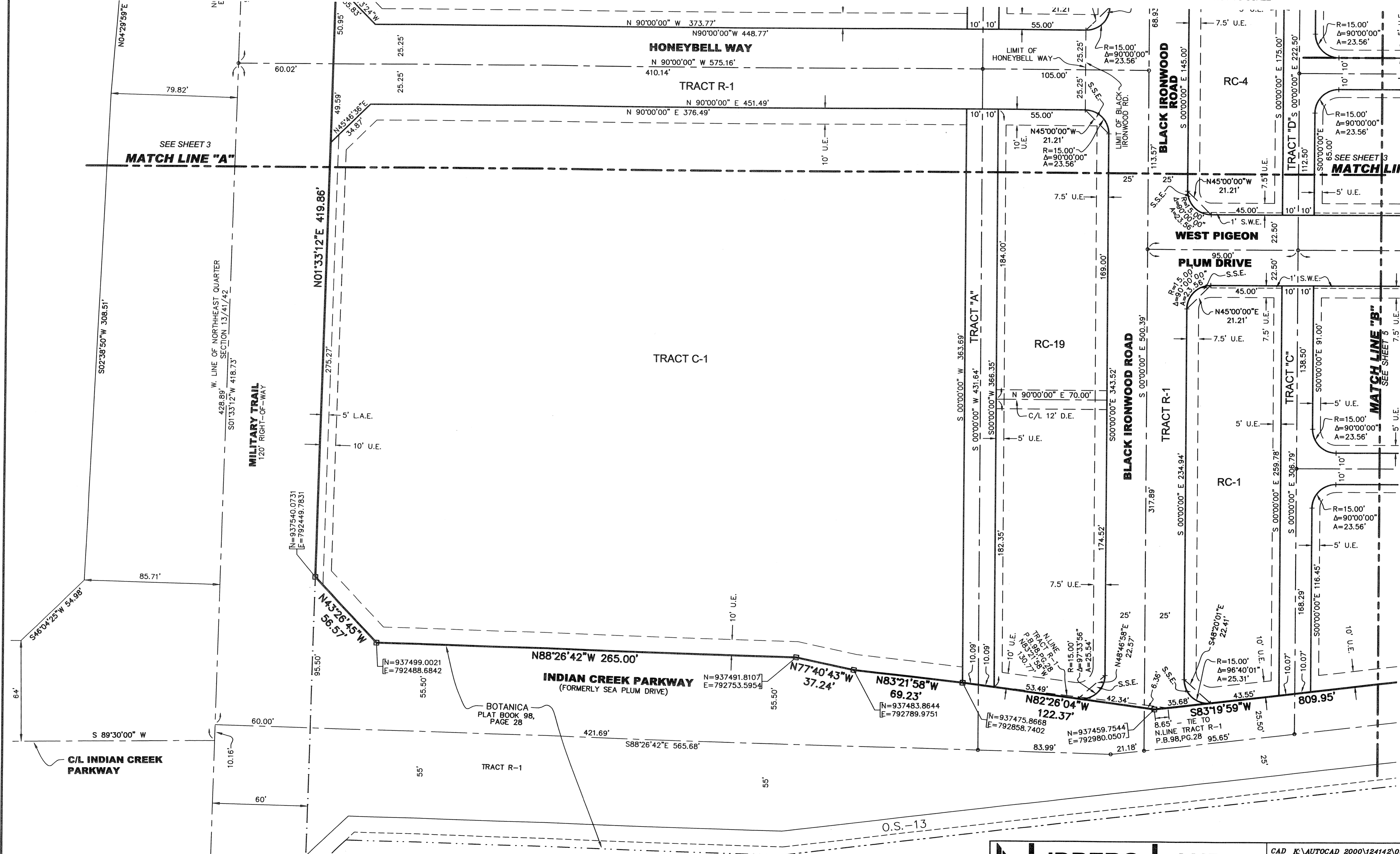
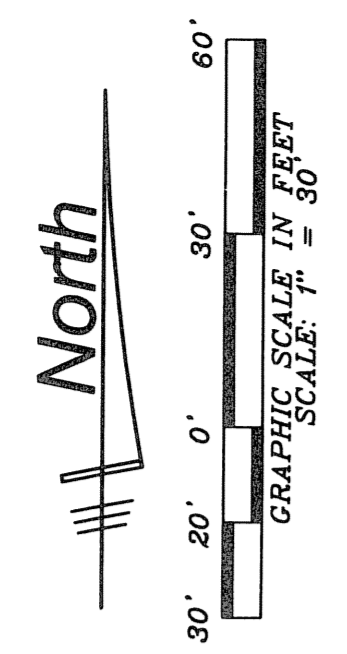


SEA PLUM

BEING A REPLAT OF A TRACTS C-1, C-2, C-3, C-4, R-3, PRESERVE TRACT No.3, AND A PORTION OF TRACT R-1, BOTANICA AS RECORDED IN PLAT BOOK 98, PAGES 28-49, PUBLIC RECORDS OF PALM BEACH COUNTY, FLORIDA, TOGETHER WITH A PORTION OF SECTION 13, TOWNSHIP 41 SOUTH, RANGE 42 EAST, PALM BEACH COUNTY, FLORIDA, ALL LYING IN SECTIONS 12 AND 13, TOWNSHIP 41 SOUTH, RANGE 42 EAST, TOWN OF JUPITER, PALM BEACH COUNTY, FLORIDA
 APRIL, 2004 SHEET 4 OF 7



141



LIDBERG LAND SURVEYING, INC.
 675 West Indian Town Road, Suite 200,
 Jupiter, Florida 33458 TEL. 561-746-8464
 LB 4431

CAD K:\AUTOCAD 2000\24142\03-097\DWG\03-097-306.DWG			
REF K:\AUTOCAD\98-150\1508-306.DWG			
FLD	AM.	PB. 374	PC. 35-37
OFF	W.D.J.	382	39
CKD	W.D.J.	SHEET 4 OF 7	JOB 03-097-306
			DATE 06/24/03
			DWG D03-097P