

EQUUS AGR - PUD PHASE THREE

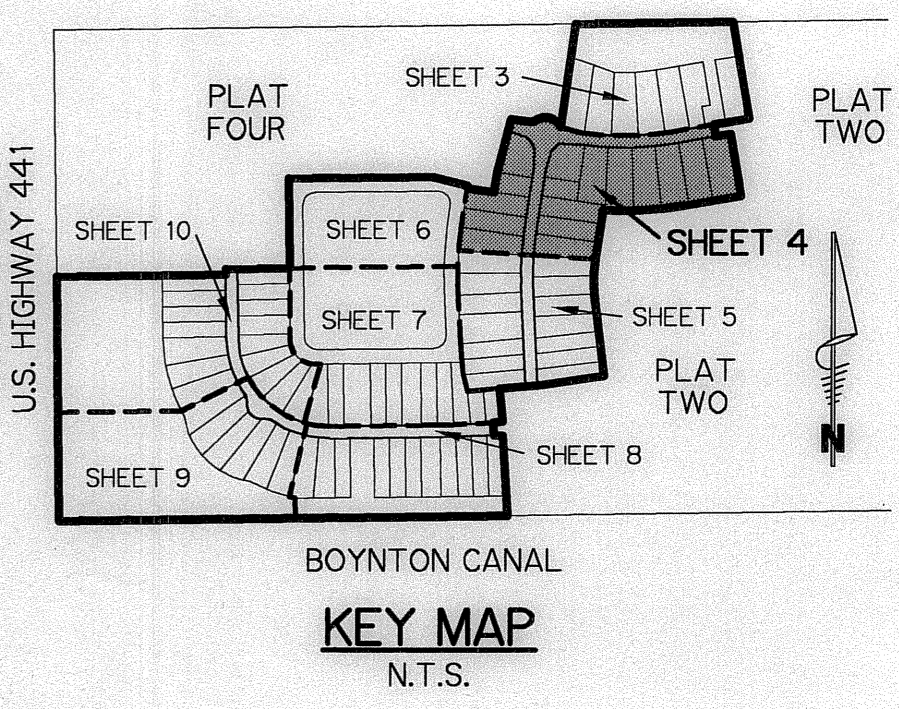
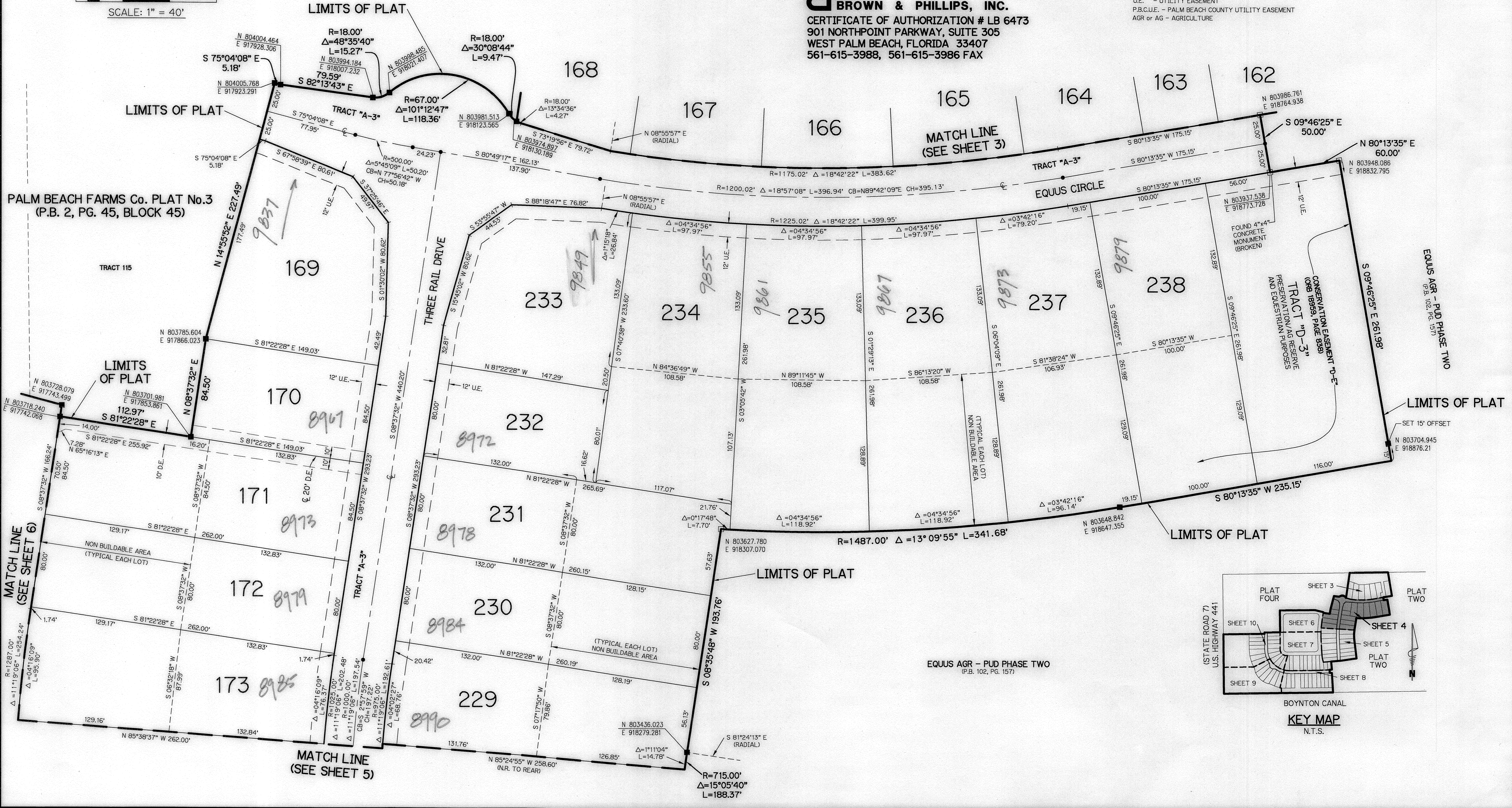
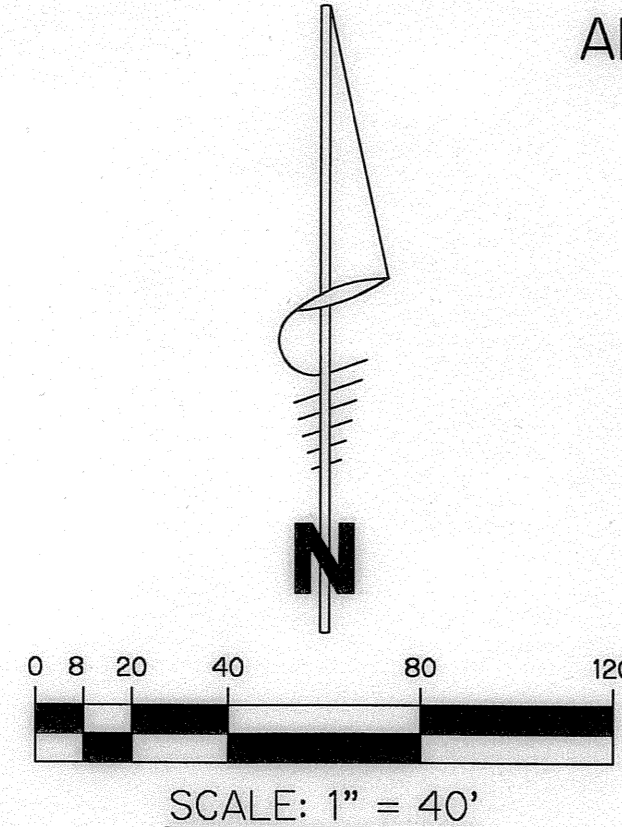
BEING A REPLAT OF A PORTION OF TRACTS 112 THROUGH 116, 118, AND ALL OF TRACT 117, BLOCK 45;
 ALL OF TRACTS 11 THROUGH 13, 16 THROUGH 19, AND A PORTION OF TRACTS 8, 9, 10, 14, 15, 20, AND 21, BLOCK 51;
 THAT PORTION OF THE 30' ROAD LYING BETWEEN SAID TRACTS 117 AND 118 ABUTTING SAID TRACTS;
 THAT PORTION OF THE 50' ROAD LYING BETWEEN SAID BLOCKS 45 AND 51 ABUTTING SAID TRACTS;
 THE NORTH 15 FEET OF THE 30' ROAD LYING SOUTH OF SAID TRACTS 16 THROUGH 20, BLOCK 51;
 AND THE EAST 12.5 FEET OF THE 25' ROAD LYING WEST OF SAID TRACTS 15 AND 16, BLOCK 51;
 PALM BEACH FARMS COMPANY PLAT No.3, RECORDED IN PLAT BOOK 2, PAGE 45, OF THE PUBLIC RECORDS OF
 PALM BEACH COUNTY, FLORIDA; LYING IN SECTIONS 18 AND 19, TOWNSHIP 45 SOUTH, RANGE 42 EAST,
 PALM BEACH COUNTY, FLORIDA

SHEET 4 OF 10 APRIL, 2005
 PETITION 2000-71

BROWN & PHILLIPS, INC.
 CERTIFICATE OF AUTHORIZATION # LB 6473
 901 NORTHPOINT PARKWAY, SUITE 305
 WEST PALM BEACH, FLORIDA 33407
 561-615-3988, 561-615-3986 FAX

- LEGEND:**
- - SET PERMANENT REFERENCE MONUMENT, L.B. #6473, UNLESS NOTED OTHERWISE
 - - FOUND PERMANENT REFERENCE MONUMENT, L.B. #7236, UNLESS NOTED OTHERWISE
 - - SET PERMANENT CONTROL POINT, L.B. #6473
 - - FOUND PERMANENT CONTROL POINT, L.B. #6473
 - △ - CENTRAL ANGLE
 - B.E. - BUFFER EASEMENT
 - CB - CHORD BEARING
 - CH - CHORD DISTANCE
 - E - CENTERLINE
 - D.B. - DEED BOOK
 - D.E. - DRAINAGE EASEMENT
 - L - ARC LENGTH
 - L.A.E. - LIMITED ACCESS EASEMENT
 - L.M.A.E. - LAKE MAINTENANCE ACCESS EASEMENT
 - L.M.E. - LAKE MAINTENANCE EASEMENT
 - L.W.D.D. - LAKE WORTH DRAINAGE DISTRICT
 - N.R. - NOT RADIAL
 - N.T.S. - NOT TO SCALE
 - O.R.B. - OFFICIAL RECORD BOOK
 - O.E. - OVERHANG EASEMENT
 - P.B. - PLAT BOOK
 - P.C.P. - PERMANENT CONTROL POINT
 - PGS. - PAGES
 - P.O.B. - POINT OF BEGINNING
 - P.O.C. - POINT OF COMMENCEMENT
 - P.S.M. - PROFESSIONAL SURVEYOR AND MAPPER
 - R - RADIUS
 - R/W - RIGHT-OF-WAY
 - U.E. - UTILITY EASEMENT
 - P.B.C.U.E. - PALM BEACH COUNTY UTILITY EASEMENT
 - AGR or AG - AGRICULTURE

148



SUBDIVISION EQUUS AGR - PHASE THREE
 BOOK 105 PAGE 148
 FLOOD MAP # 1054
 ZONING MAP # 49
 QUAD # 49
 SE
 TAZ 1028
 PUD NAME

EQUUS AGR - PUD PHASE TWO
 (P.B. 102, PG. 157)

LIMITS OF PLAT
 SET 15' OFFSET
 N 803704.945
 E 918876.21

EQUUS AGR - PUD PHASE TWO
 (P.B. 102, PG. 157)