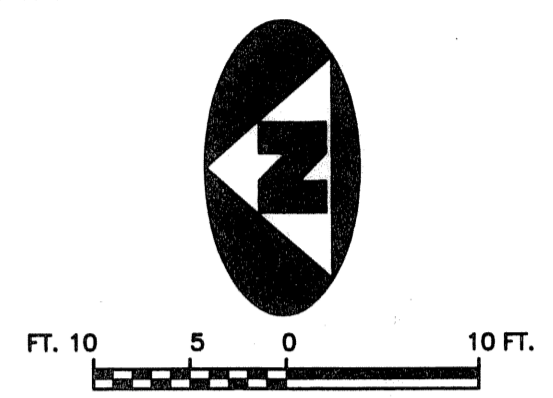


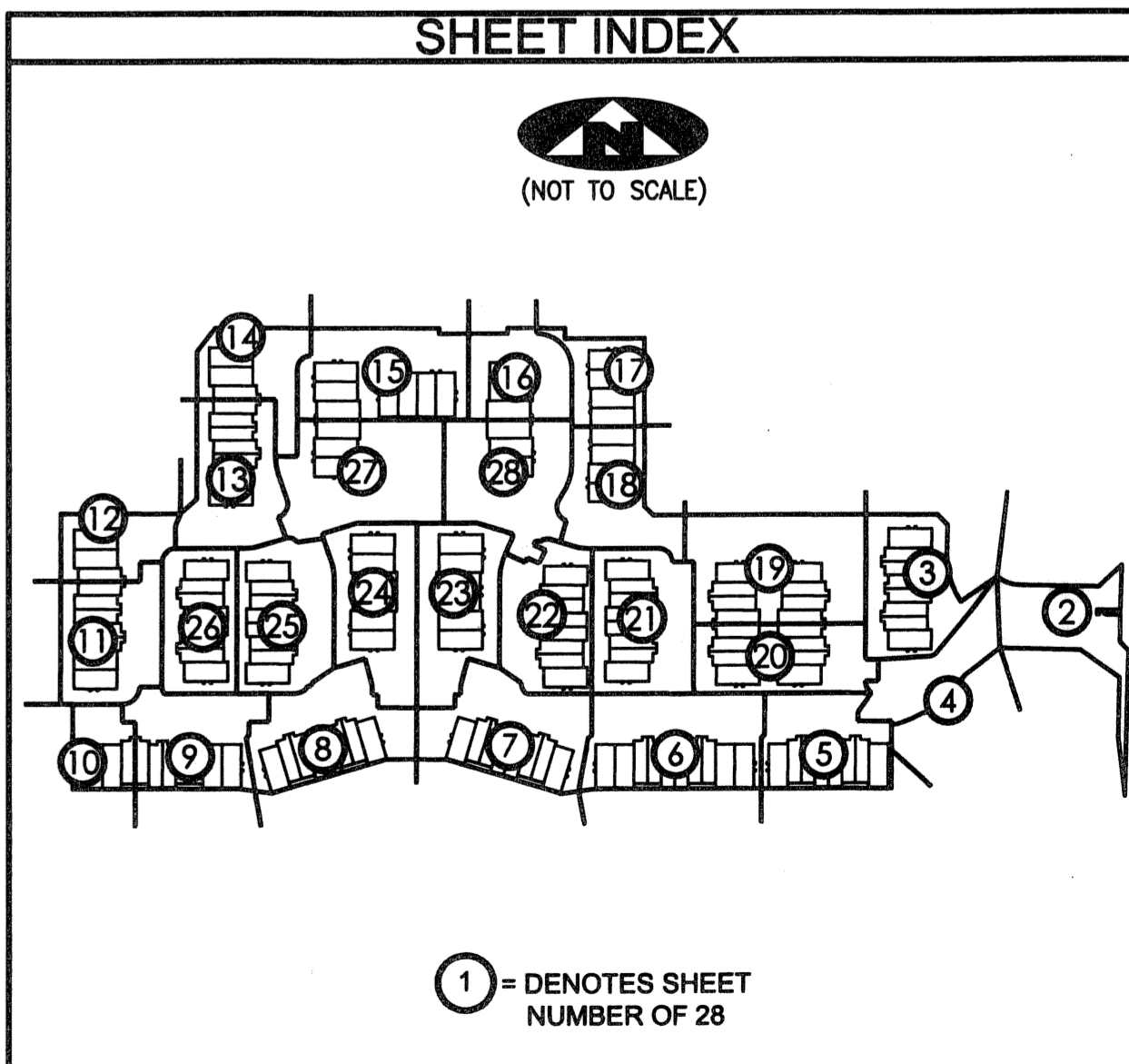
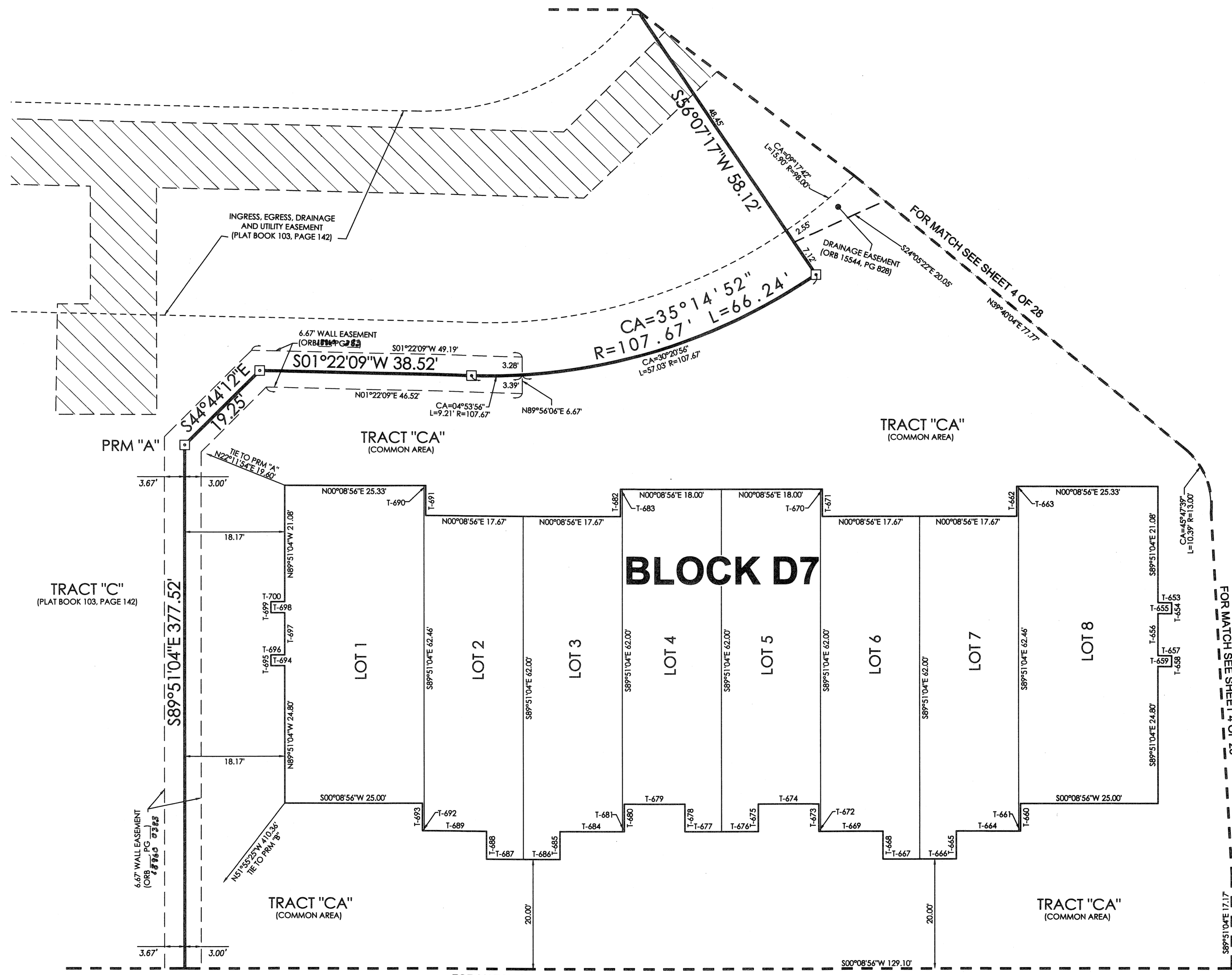
CIELO TOWNHOMES AT THE SHOPS OF DONALD ROSS

159

BEING A REPLAT OF TRACT "R", THE SHOPS OF DONALD ROSS REPLAT OF TRACT "A", RECORDED IN PLAT BOOK 103, PAGE 142, PUBLIC RECORDS, PALM BEACH COUNTY, FLORIDA AND LYING IN THE NORTHWEST ONE-QUARTER OF SECTION 25, TOWNSHIP 41 SOUTH, RANGE 42 EAST, CITY OF PALM BEACH GARDENS, PALM BEACH COUNTY, FLORIDA.



TANGENT TABLE	
T-273	S00°08'56"W 0.33'
T-274	N89°51'04"W 5.00'
T-275	S00°08'56"W 2.50'
T-276	N89°51'04"W 2.00'
T-277	N00°08'56"E 2.50'
T-278	N89°51'04"W 7.58'
T-279	S00°08'56"W 2.50'
T-280	N89°51'04"W 2.00'
T-281	N00°08'56"E 2.50'
T-282	S00°08'56"W 6.67'
T-283	N89°51'04"W 5.00'
T-284	S00°08'56"W 11.33'
T-285	N00°08'56"E 0.33'
T-286	S89°51'04"E 5.46'
T-287	N89°51'04"W 5.00'
T-288	N00°08'56"E 0.33'
T-289	S00°08'56"W 11.33'
T-290	S89°51'04"E 5.00'
T-291	S00°08'56"W 6.67'
T-292	S00°08'56"W 6.67'
T-293	N89°51'04"W 5.00'
T-294	S00°08'56"W 11.00'
T-295	S89°51'04"E 5.00'
T-296	S00°08'56"W 0.33'
T-297	S00°08'56"W 0.33'
T-298	N89°51'04"W 5.00'
T-299	S00°08'56"W 11.00'
T-300	S89°51'04"E 5.00'
T-301	S00°08'56"W 6.67'
T-302	S00°08'56"W 6.67'
T-303	N89°51'04"W 5.00'
T-304	S00°08'56"W 11.33'
T-305	N00°08'56"E 0.33'
T-306	S89°51'04"E 5.00'
T-307	N89°51'04"W 5.46'
T-308	N00°08'56"E 0.33'
T-309	S00°08'56"W 11.33'
T-310	S89°51'04"E 5.00'
T-311	S00°08'56"W 6.67'
T-312	N00°08'56"E 2.50'
T-313	S89°51'04"E 2.00'
T-314	S00°08'56"W 2.50'
T-315	S89°51'04"E 7.58'
T-316	N00°08'56"E 2.50'
T-317	S89°51'04"E 2.00'
T-318	S00°08'56"W 2.50'
T-319	S89°51'04"E 5.00'
T-320	S00°08'56"W 0.33'
T-653	N00°08'56"E 2.50'
T-654	S89°51'04"E 2.00'
T-655	S00°08'56"W 2.50'
T-656	S89°51'04"E 7.58'
T-657	N00°08'56"E 2.50'
T-658	S89°51'04"E 2.00'
T-659	S00°08'56"W 2.50'
T-660	S89°51'04"E 5.00'
T-661	S00°08'56"W 0.33'
T-662	N89°51'04"W 5.46'
T-663	N00°08'56"E 0.33'
T-664	S00°08'56"W 11.33'
T-665	S89°51'04"E 5.00'
T-666	S00°08'56"W 6.67'
T-667	S00°08'56"W 6.67'
T-668	N89°51'04"W 5.00'
T-669	S00°08'56"W 11.33'
T-670	N00°08'56"E 0.33'
T-671	S89°51'04"E 5.00'
T-672	S00°08'56"W 0.33'
T-673	N89°51'04"W 5.00'
T-674	S00°08'56"W 11.00'
T-675	S89°51'04"E 5.00'
T-676	S00°08'56"W 6.67'
T-677	S00°08'56"W 6.67'
T-678	N89°51'04"W 5.00'
T-679	S00°08'56"W 11.00'
T-680	S89°51'04"E 5.00'
T-681	S00°08'56"W 0.33'
T-682	N89°51'04"W 5.00'
T-683	N00°08'56"E 0.33'
T-684	S00°08'56"W 11.33'
T-685	S89°51'04"E 5.00'
T-686	S00°08'56"W 6.67'
T-687	S00°08'56"W 6.67'
T-688	N89°51'04"W 5.00'
T-689	S00°08'56"W 11.33'
T-690	N00°08'56"E 0.33'
T-691	S89°51'04"E 5.46'
T-692	S00°08'56"W 0.33'
T-693	N89°51'04"W 5.00'
T-694	S00°08'56"W 2.50'
T-695	N89°51'04"W 2.00'
T-696	N00°08'56"E 2.50'
T-697	N89°51'04"W 7.58'
T-698	S00°08'56"W 2.50'
T-699	N89°51'04"W 2.00'
T-700	N00°08'56"E 2.50'



LEGEND	
(R)	DENOTES A RADIAL LINE
C/L	DENOTES A CENTERLINE
DE	DENOTES DRAINAGE EASEMENT
SUA	DENOTES SEACOAST UTILITY AUTHORITY
LS	DENOTES LIFT STATION EASEMENT
EAE	DENOTES EMERGENCY ACCESS EASEMENT
R	DENOTES RADIUS DISTANCE
L	DENOTES ARC LENGTH DISTANCE
CA	DENOTES CENTRAL ANGLE
LCB	DENOTES LONG CHORD BEARING
CHD	DENOTES CHORD DISTANCE
ORB	DENOTES OFFICIAL RECORDS BOOK
PB	DENOTES PLAT BOOK
⊙	DENOTES A SET PERMANENT CONTROL POINT (LB 7344)
⊠	DENOTES A SET PERMANENT REFERENCE MONUMENT (LB 7344)
■	DENOTES A FOUND PERMANENT REFERENCE MONUMENT (LB 2171)
▨	DENOTES A SEACOAST UTILITY EASEMENT (ORB 17773, PAGE 469)
▧	DENOTES AN INGRESS, EGRESS, DRAINAGE AND UTILITY EASEMENT (PB 103, PAGE 142)

SURVEYOR'S NOTES

- THE BASE BEARING, AS SHOWN HEREON, IS S01°22'09"W ALONG THE EAST LINE OF TRACT "R", THE SHOPS OF DONALD ROSS REPLAT OF TRACT "A", RECORDED IN PLAT BOOK 103, PAGE 142.
- IN THOSE INSTANCES WHERE UTILITY OR DRAINAGE STRUCTURES ARE CONSTRUCTED IN CONFLICT WITH THE PLATTED PERMANENT CONTROL POINT POSITION STRADDLERS MONUMENTED AS PERMANENT CONTROL POINTS WILL BE SET TO REFERENCE THE PLATTED POSITION.
- LINE'S THAT INTERSECT CURVES ARE NOT RADIAL UNLESS OTHERWISE NOTED.
- THIS INSTRUMENT WAS PREPARED BY WM. R. VAN CAMPEN, P.S.M. NO. 2424, IN AND FOR THE OFFICES OF ASSOCIATED LAND SURVEYORS, INC., 4152 WEST BLUE HERON BOULEVARD, SUITE 121, RIVIERA BEACH, FLORIDA, 33404

FILE: CIELOPLOT	
FB:	WO.NO.: P238
SCALE: 1"=10'	DATE: 12/25/2004
DWN: KVC	SHEET 3 OF 28

ASSOCIATED LAND SURVEYORS, INC.
 4152 W. BLUE HERON BOULEVARD—SUITE 121
 RIVIERA BEACH FLORIDA 33404 LB NO. 7344
 PHONE: (561) 848-2102 FAX: (561) 844-9659 EMAIL: ALSURVEY@AOL.COM