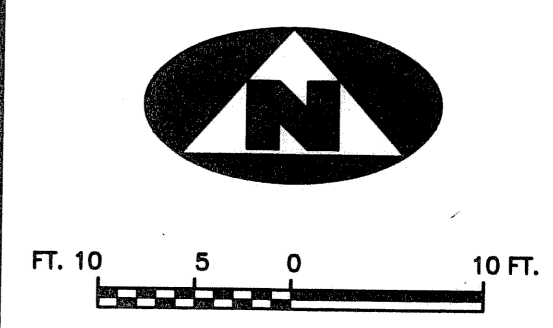
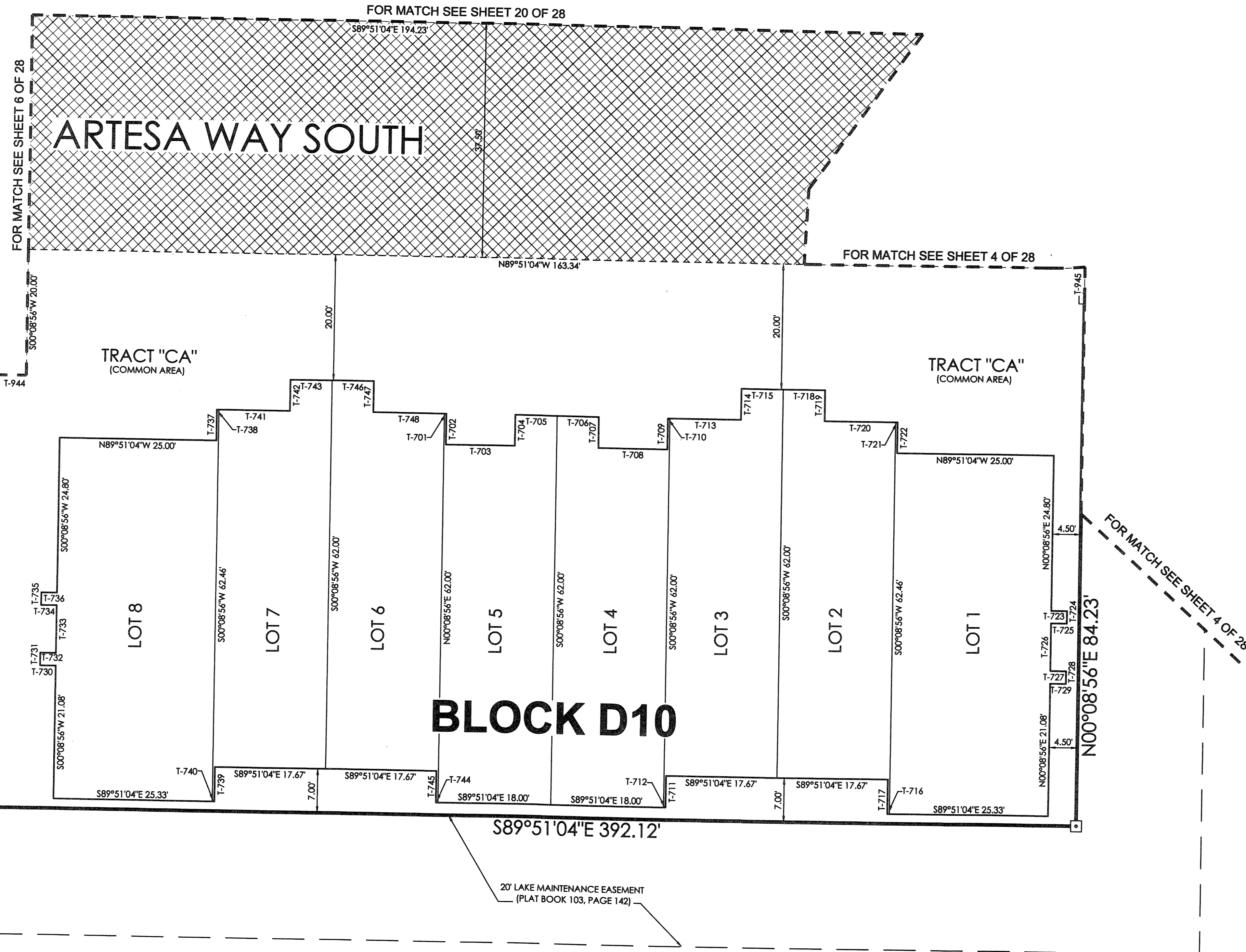


CIELO TOWNHOMES AT THE SHOPS OF DONALD ROSS

BEING A REPLAT OF TRACT "R", THE SHOPS OF DONALD ROSS REPLAT OF TRACT "A", RECORDED IN PLAT BOOK 103, PAGE 142, PUBLIC RECORDS, PALM BEACH COUNTY, FLORIDA AND LYING IN THE NORTHWEST ONE-QUARTER OF SECTION 25, TOWNSHIP 41 SOUTH, RANGE 42 EAST, CITY OF PALM BEACH GARDENS, PALM BEACH COUNTY, FLORIDA.

161



TANGENT TABLE

T-701	N89°51'04\"W 0.33'
T-702	N00°08'56\"W 5.00'
T-703	N89°51'04\"W 11.00'
T-704	S00°08'56\"W 5.00'
T-705	N89°51'04\"W 6.67'
T-706	N89°51'04\"W 6.67'
T-707	N00°08'56\"E 5.00'
T-708	N89°51'04\"W 11.00'
T-709	S00°08'56\"W 5.00'
T-710	N89°51'04\"W 0.33'
T-711	N00°08'56\"E 5.00'
T-712	S89°51'04\"E 0.33'
T-713	N89°51'04\"W 11.33'
T-714	S00°08'56\"W 5.00'
T-715	N89°51'04\"W 6.67'
T-716	S89°51'04\"E 0.33'
T-717	S00°08'56\"W 5.46'
T-718	N89°51'04\"W 6.67'
T-719	N00°08'56\"E 5.00'
T-720	N89°51'04\"W 11.33'
T-721	N89°51'04\"W 0.33'
T-722	N00°08'56\"E 5.00'
T-723	N89°51'04\"W 2.50'
T-724	N00°08'56\"E 2.00'
T-725	S89°51'04\"E 2.50'
T-726	N00°08'56\"E 7.58'
T-727	N89°51'04\"W 2.50'
T-728	N00°08'56\"E 2.00'
T-729	S89°51'04\"E 2.50'
T-730	S89°51'04\"E 2.50'
T-731	S00°08'56\"W 2.00'
T-732	N89°51'04\"W 2.50'
T-733	S00°08'56\"W 7.58'
T-734	S89°51'04\"E 2.50'
T-735	S00°08'56\"W 2.00'
T-736	N89°51'04\"W 2.50'
T-737	S00°08'56\"W 5.00'
T-738	N89°51'04\"W 0.33'
T-739	N00°08'56\"E 5.46'
T-740	S89°51'04\"E 0.33'
T-741	N89°51'04\"W 11.33'
T-742	S00°08'56\"W 5.00'
T-743	N89°51'04\"W 6.67'
T-744	S89°51'04\"E 0.33'
T-745	S00°08'56\"W 5.00'
T-746	N89°51'04\"W 6.67'
T-747	N00°08'56\"E 5.00'
T-748	N89°51'04\"W 11.33'
T-944	N89°51'04\"W 9.00'
T-945	N00°08'56\"E 5.02'

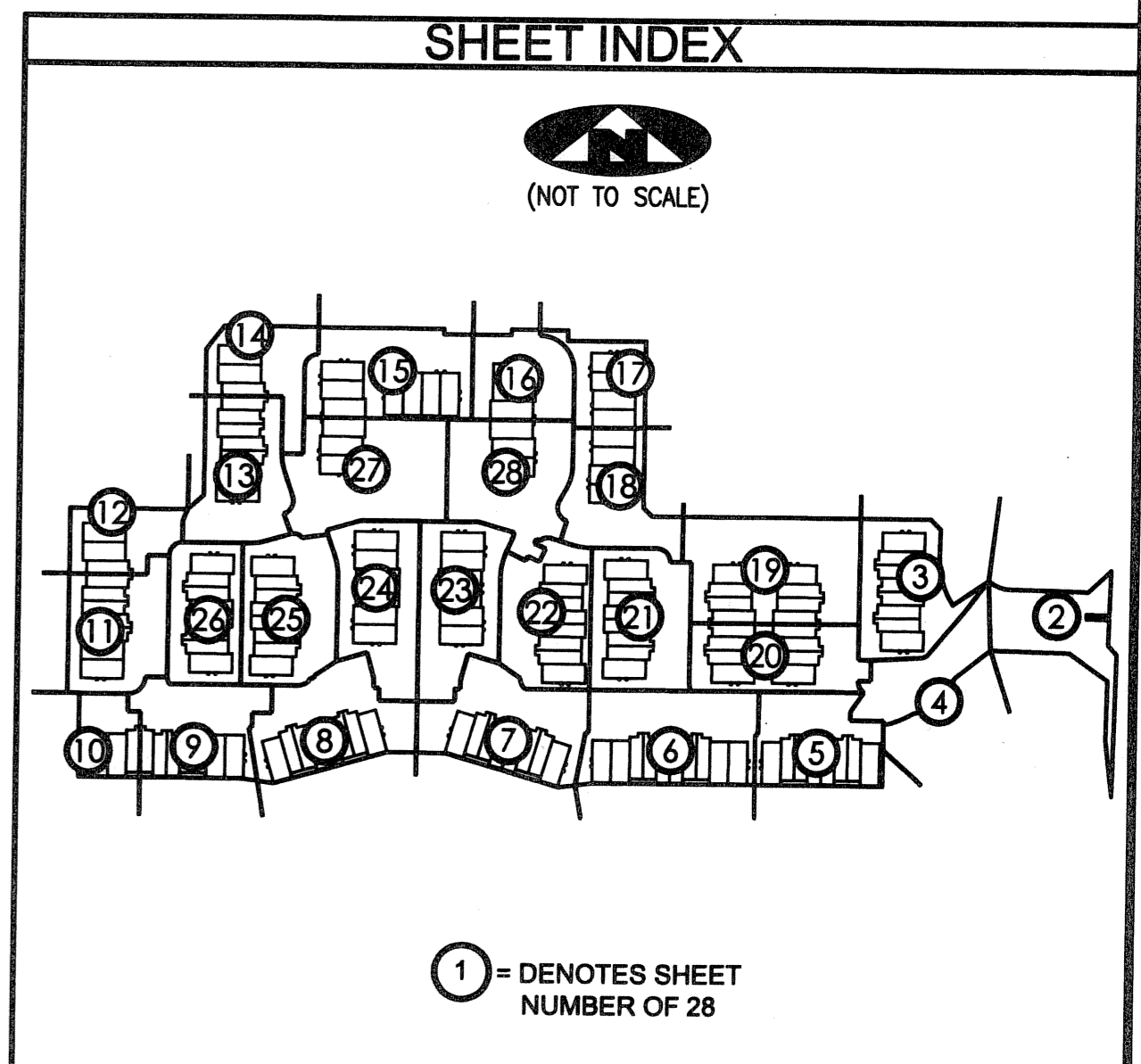
LEGEND

(R)	DENOTES A RADIAL LINE	R	DENOTES RADIUS DISTANCE	⊙	DENOTES A SET PERMANENT CONTROL POINT	□	DENOTES A SET PERMANENT REFERENCE MONUMENT (LB 7344)
C/L	DENOTES A CENTERLINE	L	DENOTES ARC LENGTH DISTANCE	⊠	DENOTES A FOUND PERMANENT REFERENCE MONUMENT (LB 2171)		
DE	DENOTES DRAINAGE EASEMENT	CA	DENOTES CENTRAL ANGLE	■	DENOTES A FOUND PERMANENT REFERENCE MONUMENT (LB 2171)		
SUA	DENOTES SEACOAST UTILITY AUTHORITY	LCB	DENOTES LONG CHORD BEARING	▨	DENOTES AN INGRESS, EGRESS, DRAINAGE AND UTILITY EASEMENT (PB 103, PAGE 142)		
LS	DENOTES LIFT STATION EASEMENT	CHD	DENOTES CHORD DISTANCE				
EAE	DENOTES EMERGENCY ACCESS EASEMENT	ORB	DENOTES OFFICIAL RECORDS BOOK				
		PB	DENOTES PLAT BOOK				

SURVEYOR'S NOTES

- THE BASE BEARING, AS SHOWN HEREON, IS S01°22'09\"W ALONG THE EAST LINE OF TRACT "R", THE SHOPS OF DONALD ROSS REPLAT OF TRACT "A", RECORDED IN PLAT BOOK 103, PAGE 142. IN THOSE INSTANCES WHERE UTILITY OR DRAINAGE STRUCTURES ARE CONSTRUCTED IN CONFLICT WITH THE PLATTED PERMANENT CONTROL POINT POSITION STRADDLERS MONUMENTED AS PERMANENT CONTROL POINTS WILL BE SET TO REFERENCE THE PLATTED POSITION.
- LINES THAT INTERSECT CURVES ARE NOT RADIAL UNLESS OTHERWISE NOTED.
- THIS INSTRUMENT WAS PREPARED BY WM. R. VAN CAMPEN, P.S.M. NO. 2424, IN AND FOR THE OFFICES OF ASSOCIATED LAND SURVEYORS, INC., 4152 WEST BLUE HERON BOULEVARD, SUITE 121, RIVIERA BEACH, FLORIDA, 33404

FILE: CIELOPLOT	
FB:	WO.NO.: P238
SCALE: 1"=10'	DATE: 12/25/2004
DWN: KVC	SHEET 5 OF 28



ASSOCIATED LAND SURVEYORS, INC.
 4152 W. BLUE HERON BOULEVARD—SUITE 121
 RIVIERA BEACH FLORIDA 33404 LB NO. 7344
 PHONE: (561) 848-2102 FAX: (561) 844-9659 EMAIL: ALLSURVEY@AOL.COM