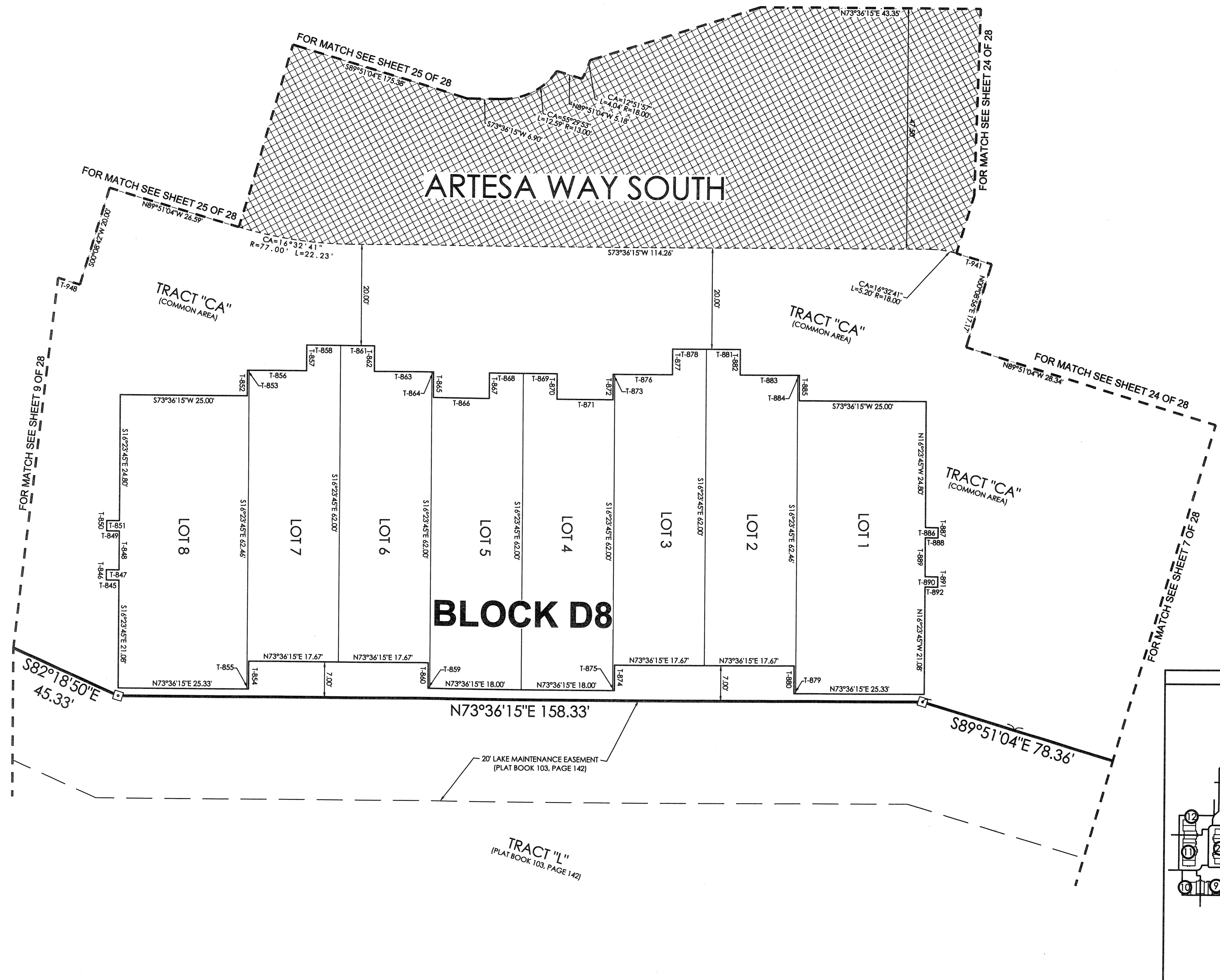
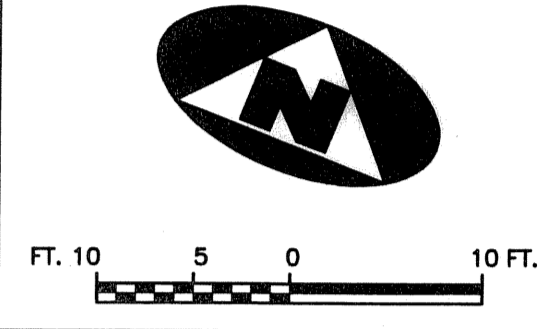


# CIELO TOWNHOMES AT THE SHOPS OF DONALD ROSS

BEING A REPLAT OF TRACT "R", THE SHOPS OF DONALD ROSS REPLAT OF TRACT "A", RECORDED IN PLAT BOOK 103, PAGE 142, PUBLIC RECORDS, PALM BEACH COUNTY, FLORIDA AND LYING IN THE NORTHWEST ONE-QUARTER OF SECTION 25, TOWNSHIP 41 SOUTH, RANGE 42 EAST, CITY OF PALM BEACH GARDENS, PALM BEACH COUNTY, FLORIDA.

164



### TANGENT TABLE

T-845	N73°36'15"E 2.50'
T-846	S16°23'45"E 2.00'
T-847	S73°36'15"W 2.50'
T-848	S16°23'45"E 7.58'
T-849	N73°36'15"E 2.50'
T-850	S16°23'45"E 2.00'
T-851	S73°36'15"W 2.50'
T-852	S16°23'45"E 5.00'
T-853	S73°36'15"W 0.33'
T-854	N16°23'45"W 5.46'
T-855	N73°36'15"E 0.33'
T-856	S73°36'15"W 11.33'
T-857	S16°23'45"E 5.00'
T-858	S73°36'15"W 6.67'
T-859	N73°36'15"E 0.33'
T-860	S16°23'45"E 5.00'
T-861	S73°36'15"W 6.67'
T-862	N16°23'45"W 5.00'
T-863	S73°36'15"W 11.33'
T-864	S73°36'15"W 0.33'
T-865	N16°23'45"W 5.00'
T-866	S73°36'15"W 11.00'
T-867	S16°23'45"E 5.00'
T-868	S73°36'15"W 6.67'
T-869	S73°36'15"W 6.67'
T-870	N16°23'45"W 5.00'
T-871	S73°36'15"W 11.00'
T-872	S16°23'45"E 5.00'
T-873	S73°36'15"W 0.33'
T-874	N16°23'45"W 5.00'
T-875	N73°36'15"E 0.33'
T-876	S73°36'15"W 11.33'
T-877	S16°23'45"E 5.00'
T-878	S73°36'15"W 6.67'
T-879	N73°36'15"E 0.33'
T-880	S16°23'45"E 5.46'
T-881	S73°36'15"W 6.67'
T-882	N16°23'45"W 5.00'
T-883	S73°36'15"W 11.33'
T-884	S73°36'15"W 0.33'
T-885	N16°23'45"W 5.00'
T-886	S73°36'15"W 2.50'
T-887	N16°23'45"W 2.00'
T-888	N73°36'15"E 2.50'
T-889	N16°23'45"W 7.58'
T-890	S73°36'15"W 2.50'
T-891	N16°23'45"W 2.00'
T-892	N73°36'15"E 2.50'
T-941	N89°51'04"W 7.24'
T-948	N89°51'18"W 9.00'

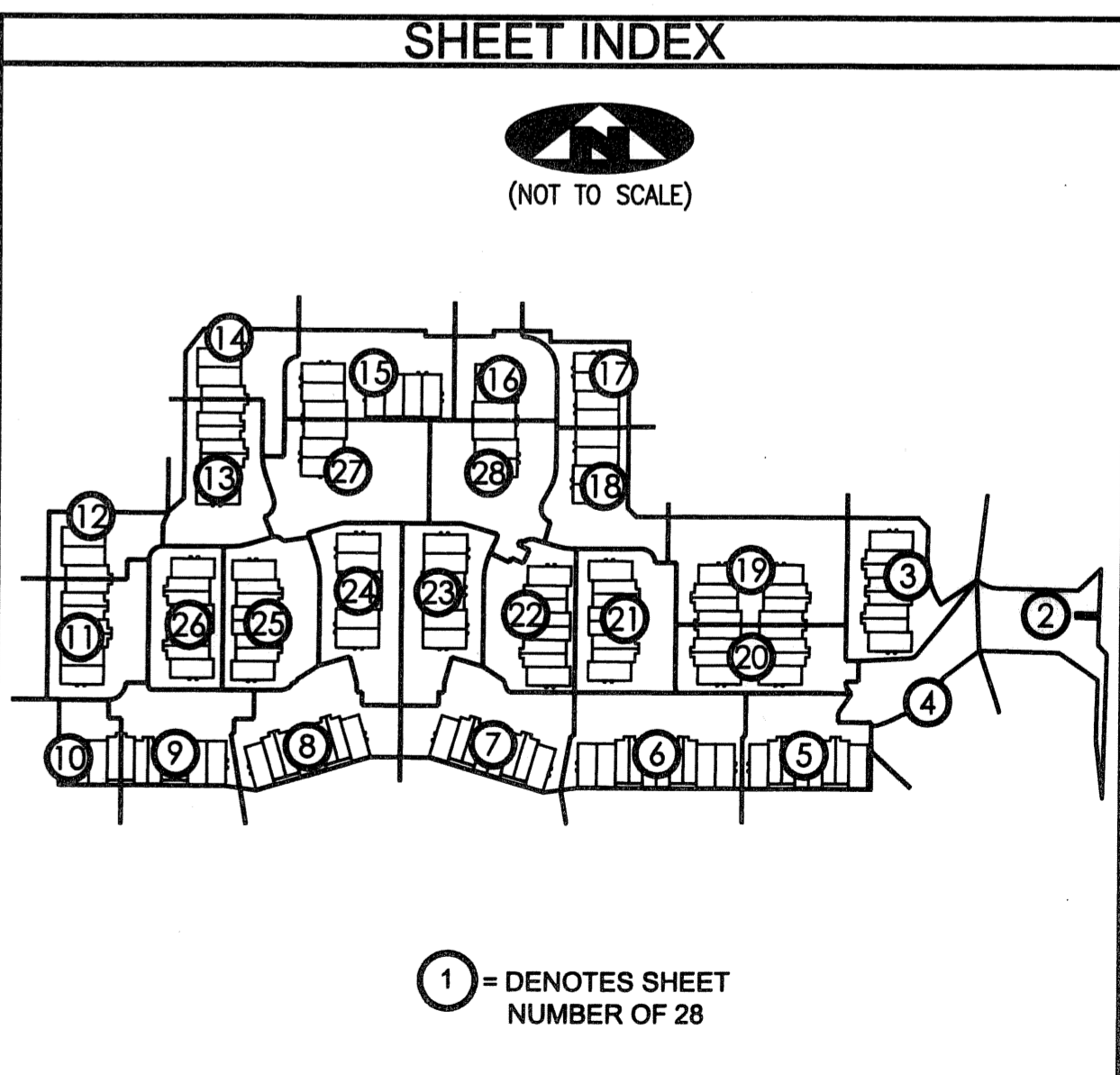
### LEGEND

(R)	DENOTES A RADIAL LINE	R	DENOTES RADIUS DISTANCE	⊙	DENOTES A SET PERMANENT CONTROL POINT (LB 7344)	⊠	DENOTES A SET PERMANENT REFERENCE MONUMENT (LB 7344)
C/L	DENOTES A CENTERLINE	L	DENOTES ARC LENGTH DISTANCE	■	DENOTES A FOUND PERMANENT REFERENCE MONUMENT (LB 2171)	⊞	DENOTES A SEACOAST UTILITY EASEMENT (ORB 17773, PAGE 469)
DE	DENOTES DRAINAGE EASEMENT	CA	DENOTES CENTRAL ANGLE	⊞	DENOTES AN INGRESS, EGRESS, DRAINAGE AND UTILITY EASEMENT (PB 103, PAGE 142)		
SJA	DENOTES SEACOAST UTILITY AUTHORITY	LCB	DENOTES LONG CHORD BEARING				
LS	DENOTES LIFT STATION EASEMENT	CHD	DENOTES CHORD DISTANCE				
EAE	DENOTES EMERGENCY ACCESS EASEMENT	ORB	DENOTES OFFICIAL RECORDS BOOK				
		PB	DENOTES PLAT BOOK				

### SURVEYOR'S NOTES

1. THE BASE BEARING, AS SHOWN HEREON, IS S01°22'09"W ALONG THE EAST LINE OF TRACT "R", THE SHOPS OF DONALD ROSS REPLAT OF TRACT "A", RECORDED IN PLAT BOOK 103, PAGE 142.
2. IN THOSE INSTANCES WHERE UTILITY OR DRAINAGE STRUCTURES ARE CONSTRUCTED IN CONFLICT WITH THE PLATTED PERMANENT CONTROL POINT POSITION STRADDLERS MONUMENTED AS PERMANENT CONTROL POINTS WILL BE SET TO REFERENCE THE PLATTED POSITION.
3. LINES THAT INTERSECT CURVES ARE NOT RADIAL UNLESS OTHERWISE NOTED.
4. THIS INSTRUMENT WAS PREPARED BY WM. R. VAN CAMPEN, P.S.M. NO. 2424, IN AND FOR THE OFFICES OF ASSOCIATED LAND SURVEYORS, INC., 4152 WEST BLUE HERON BOULEVARD, SUITE 121, RIVIERA BEACH, FLORIDA, 33404

FILE: CIELOPLOT	
FB:	WO.NO.: P238
SCALE: 1"=10'	DATE: 12/25/2004
DWN: KVC	SHEET 8 OF 28



**ASSOCIATED LAND SURVEYORS, INC.**  
 4152 W. BLUE HERON BOULEVARD—SUITE 121  
 RIVIERA BEACH FLORIDA 33404 LB NO. 7344  
 PHONE: (561) 848-2102 FAX: (561) 844-9659 EMAIL: ALLSURVEY@AOL.COM