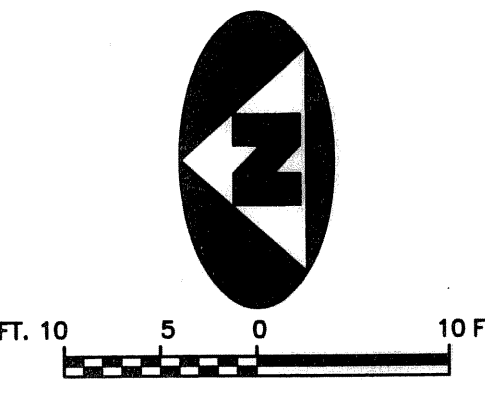
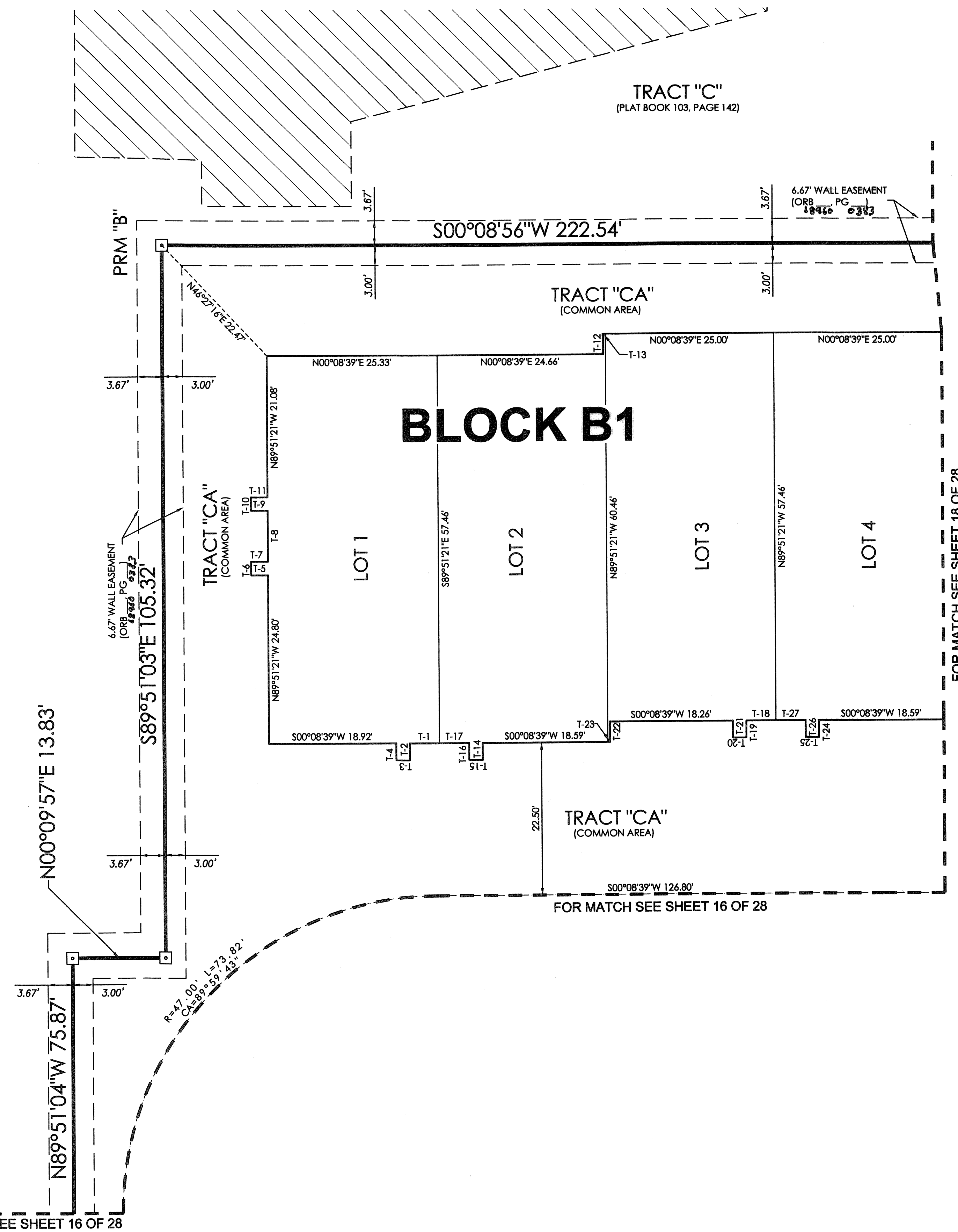


CIELO TOWNHOMES AT THE SHOPS OF DONALD ROSS

BEING A REPLAT OF TRACT "R", THE SHOPS OF DONALD ROSS REPLAT OF TRACT "A", RECORDED IN PLAT BOOK 103, PAGE 142, PUBLIC RECORDS, PALM BEACH COUNTY, FLORIDA AND LYING IN THE NORTHWEST ONE-QUARTER OF SECTION 25, TOWNSHIP 41 SOUTH, RANGE 42 EAST, CITY OF PALM BEACH GARDENS, PALM BEACH COUNTY, FLORIDA.

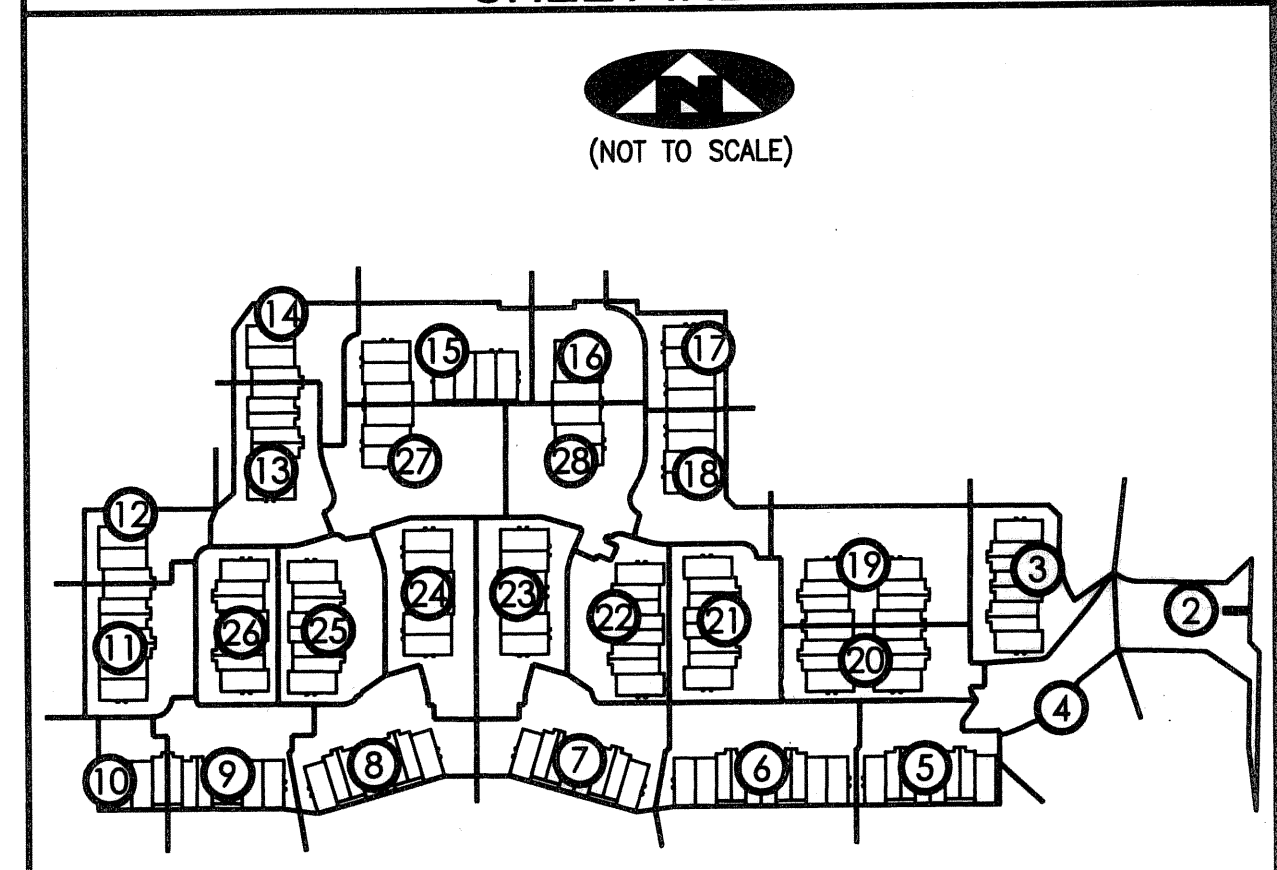
173



TANGENT TABLE

T-1	S00°08'39"W 4.41'
T-2	S89°51'21"E 2.50'
T-3	S00°08'39"W 2.00'
T-4	N89°51'21"W 2.50'
T-5	S00°08'39"W 2.50'
T-6	N89°51'21"W 2.00'
T-7	N00°08'39"E 2.50'
T-8	N89°51'21"W 7.58'
T-9	S00°08'39"W 2.50'
T-10	N89°51'21"W 2.00'
T-11	N00°08'39"E 2.50'
T-12	N89°51'21"W 3.00'
T-13	N00°08'39"E 0.34'
T-14	S89°51'21"E 2.50'
T-15	S00°08'39"W 2.00'
T-16	N89°51'21"W 2.50'
T-17	S00°08'39"W 4.41'
T-18	S00°08'39"W 4.41'
T-19	S89°51'21"E 2.50'
T-20	S00°08'39"W 2.00'
T-21	N89°51'21"W 2.50'
T-22	S89°51'21"E 3.00'
T-23	S00°08'39"W 0.33'
T-24	S89°51'21"E 2.50'
T-25	S00°08'39"W 2.00'
T-26	N89°51'21"W 2.50'
T-27	S00°08'39"W 4.41'

SHEET INDEX



LEGEND	
(R) DENOTES A RADIAL LINE	R DENOTES RADIUS DISTANCE
C/L DENOTES A CENTERLINE	L DENOTES ARC LENGTH DISTANCE
DE DENOTES DRAINAGE EASEMENT	CA DENOTES CENTRAL ANGLE
SUA DENOTES SEACOAST UTILITY AUTHORITY	LCB DENOTES LONG CHORD BEARING
LS DENOTES LIFT STATION EASEMENT	CHD DENOTES CHORD DISTANCE
EAE DENOTES EMERGENCY ACCESS EASEMENT	ORB DENOTES OFFICIAL RECORDS BOOK
	PB DENOTES PLAT BOOK
	⊙ DENOTES A SET PERMANENT CONTROL POINT (LB 7344)
	⊙ DENOTES A FOUND PERMANENT REFERENCE MONUMENT (LB 2171)
	⊙ DENOTES A SEACOAST UTILITY EASEMENT (ORB 17773, PAGE 469)
	⊙ DENOTES AN INGRESS, EGRESS, DRAINAGE AND UTILITY EASEMENT (PB 103, PAGE 142)

SURVEYOR'S NOTES

1. THE BASE BEARING, AS SHOWN HEREON, IS S01°22'09"W ALONG THE EAST LINE OF TRACT "R", THE SHOPS OF DONALD ROSS REPLAT OF TRACT "A", RECORDED IN PLAT BOOK 103, PAGE 142.
2. IN THOSE INSTANCES WHERE UTILITY OR DRAINAGE STRUCTURES ARE CONSTRUCTED IN CONFLICT WITH THE PLATTED PERMANENT CONTROL POINT POSITION STRADDLERS MONUMENTED AS PERMANENT CONTROL POINTS WILL BE SET TO REFERENCE THE PLATTED POSITION.
3. LINES THAT INTERSECT CURVES ARE NOT RADIAL UNLESS OTHERWISE NOTED.
4. THIS INSTRUMENT WAS PREPARED BY WM. R. VAN CAMPEN, P.S.M. NO. 2424, IN AND FOR THE OFFICES OF ASSOCIATED LAND SURVEYORS, INC., 4152 WEST BLUE HERON BOULEVARD, SUITE 121, RIVIERA BEACH, FLORIDA, 33404

FILE: CIELOPLOT	
FB:	WO.NO.: P238
SCALE: 1"=10'	DATE: 12/25/2004
DWN: KVC	SHEET 17 OF 28

ASSOCIATED LAND SURVEYORS, INC.
 4152 W. BLUE HERON BOULEVARD—SUITE 121
 RIVIERA BEACH FLORIDA 33404 LB NO. 7344
 PHONE: (561) 848-2102 FAX: (561) 844-9659 EMAIL: ALLSSURVEY@AOL.COM