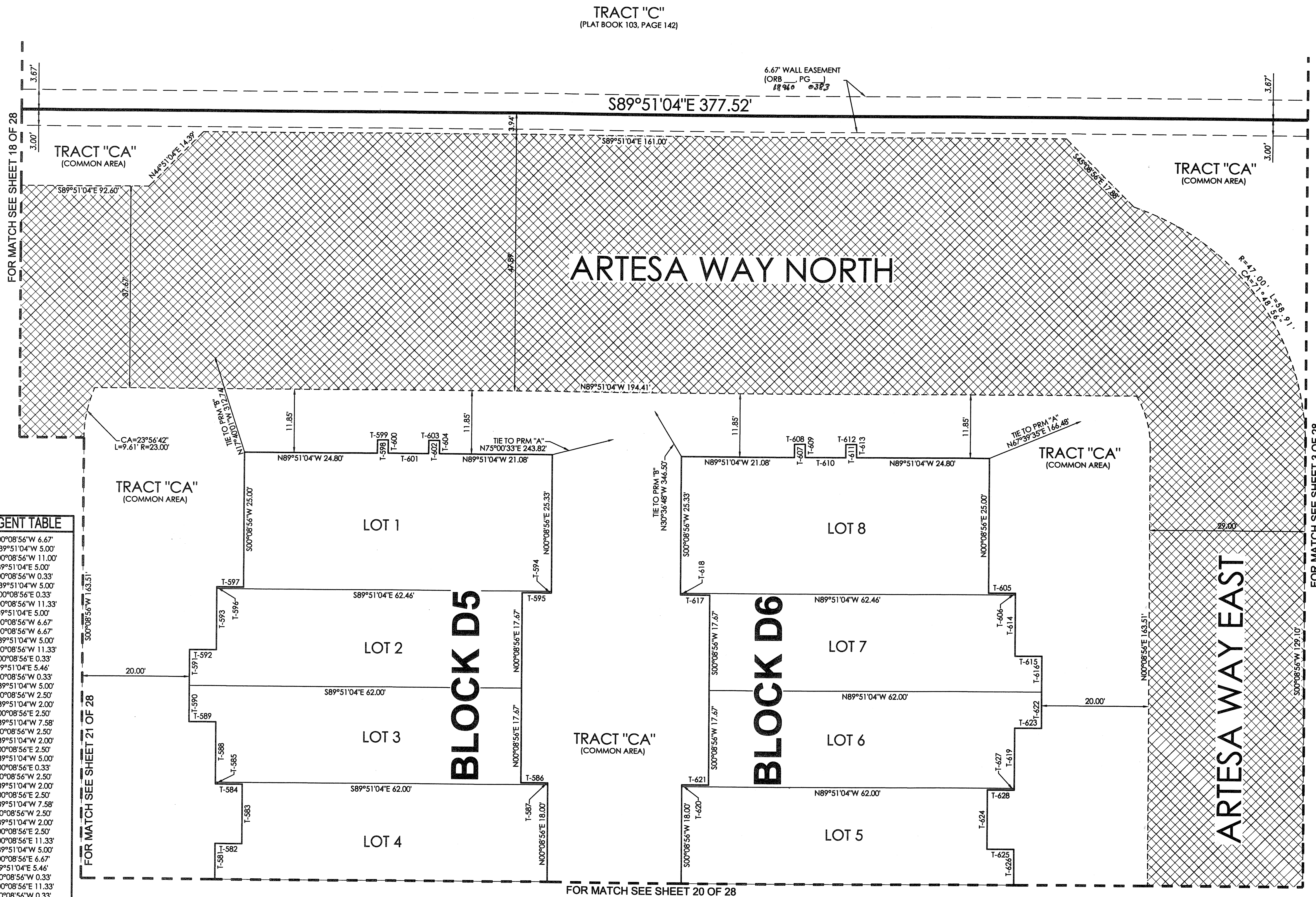
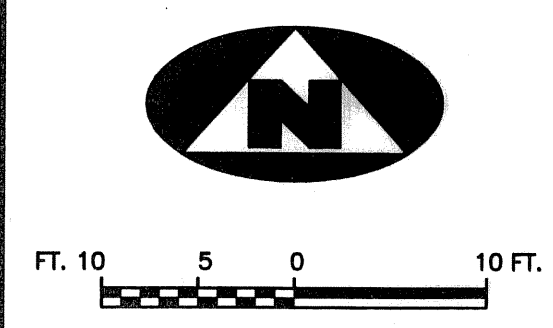


CIELO TOWNHOMES AT THE SHOPS OF DONALD ROSS

BEING A REPLAT OF TRACT "R", THE SHOPS OF DONALD ROSS REPLAT OF TRACT "A", RECORDED IN PLAT BOOK 103, PAGE 142, PUBLIC RECORDS, PALM BEACH COUNTY, FLORIDA AND LYING IN THE NORTHWEST ONE-QUARTER OF SECTION 25, TOWNSHIP 41 SOUTH, RANGE 42 EAST, CITY OF PALM BEACH GARDENS, PALM BEACH COUNTY, FLORIDA.

175



TANGENT TABLE

T-581	S00°08'56"W 6.67'
T-582	N89°51'04"W 5.00'
T-583	S00°08'56"W 11.00'
T-584	S89°51'04"E 5.00'
T-585	S00°08'56"W 0.33'
T-586	N89°51'04"W 5.00'
T-587	N00°08'56"E 0.33'
T-588	S00°08'56"W 11.33'
T-589	S89°51'04"E 5.00'
T-590	S00°08'56"W 6.67'
T-591	S00°08'56"W 6.67'
T-592	N89°51'04"W 5.00'
T-593	S00°08'56"E 11.33'
T-594	N00°08'56"E 0.33'
T-595	S89°51'04"E 5.46'
T-596	S00°08'56"W 0.33'
T-597	N89°51'04"W 5.00'
T-598	S00°08'56"W 2.50'
T-599	N89°51'04"W 2.00'
T-600	N00°08'56"E 2.50'
T-601	N89°51'04"W 7.58'
T-602	S00°08'56"W 2.50'
T-603	N89°51'04"W 2.00'
T-604	N00°08'56"E 2.50'
T-605	N89°51'04"W 5.00'
T-606	N00°08'56"E 0.33'
T-607	S00°08'56"W 2.50'
T-608	N89°51'04"W 2.00'
T-609	N00°08'56"E 2.50'
T-610	N89°51'04"W 7.58'
T-611	S00°08'56"W 2.50'
T-612	N89°51'04"W 2.00'
T-613	N00°08'56"E 2.50'
T-614	N00°08'56"E 11.33'
T-615	N89°51'04"W 5.00'
T-616	N00°08'56"E 6.67'
T-617	S89°51'04"E 5.46'
T-618	S00°08'56"W 0.33'
T-619	N00°08'56"E 11.33'
T-620	S00°08'56"W 0.33'
T-621	N89°51'04"W 5.00'
T-622	N00°08'56"E 6.67'
T-623	S89°51'04"E 5.00'
T-624	N00°08'56"E 11.00'
T-625	N89°51'04"W 5.00'
T-626	N00°08'56"E 6.67'
T-627	N00°08'56"E 0.33'
T-628	S89°51'04"E 5.00'

FOR MATCH SEE SHEET 18 OF 28

FOR MATCH SEE SHEET 21 OF 28

FOR MATCH SEE SHEET 20 OF 28

FOR MATCH SEE SHEET 3 OF 28

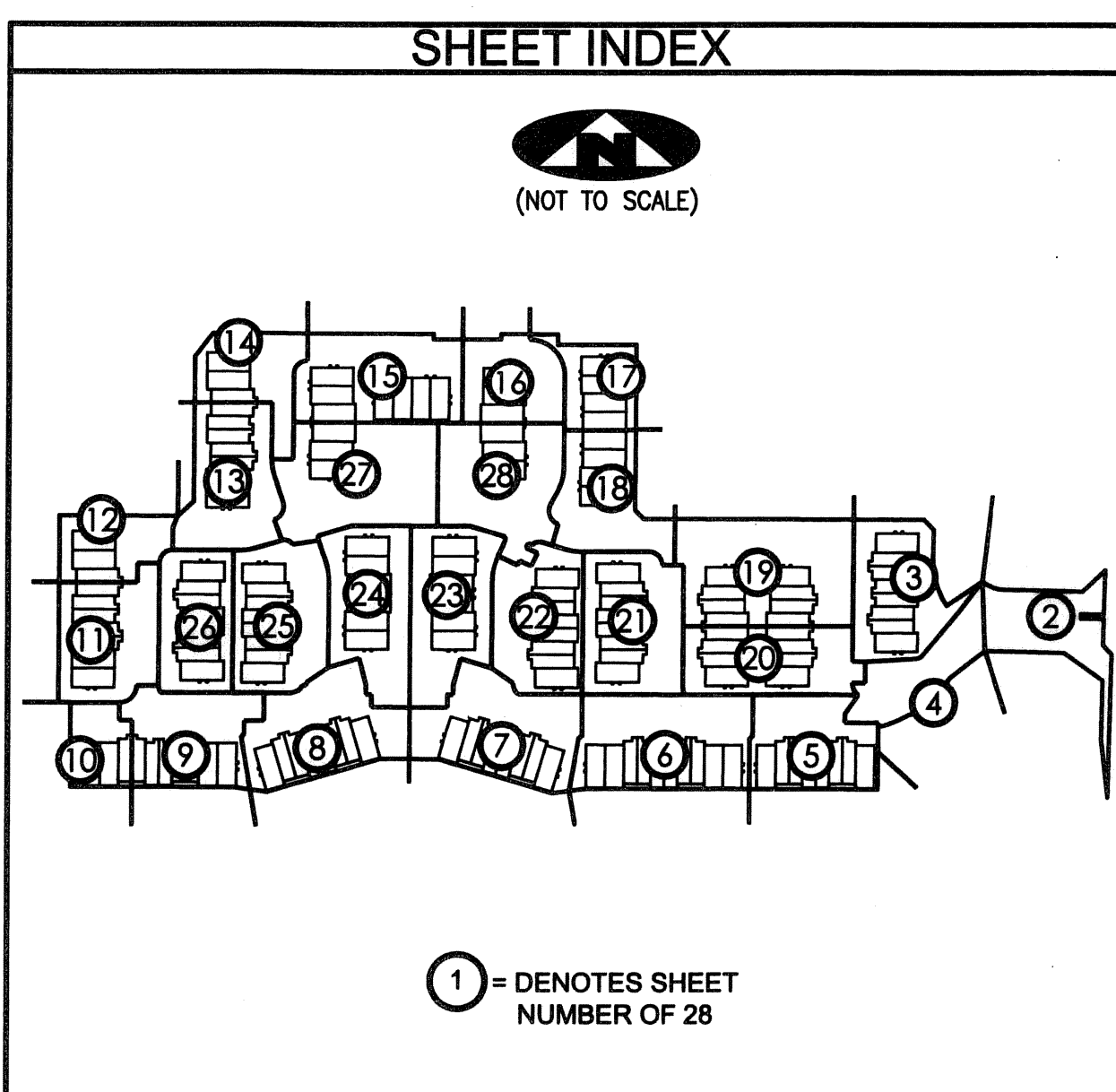
LEGEND

(R)	DENOTES A RADIAL LINE	R	DENOTES RADIUS DISTANCE	⊙	DENOTES A SET PERMANENT CONTROL POINT (LB 7344)	□	DENOTES A SET PERMANENT REFERENCE MONUMENT (LB 7344)
C/L	DENOTES A CENTERLINE	L	DENOTES ARC LENGTH DISTANCE	⊙	DENOTES A FOUND PERMANENT REFERENCE MONUMENT (LB 2171)	■	DENOTES A FOUND PERMANENT REFERENCE MONUMENT (LB 2171)
DE	DENOTES DRAINAGE EASEMENT	CA	DENOTES CENTRAL ANGLE	⊙	DENOTES A SEACOAST UTILITY EASEMENT (ORB 17773, PAGE 469)	⊙	DENOTES AN INGRESS, EGRESS, DRAINAGE AND UTILITY EASEMENT (PB 103, PAGE 142)
SUA	DENOTES SEACOAST UTILITY AUTHORITY	LCB	DENOTES LONG CHORD BEARING				
LS	DENOTES LIFT STATION EASEMENT	CHD	DENOTES CHORD DISTANCE				
EAE	DENOTES EMERGENCY ACCESS EASEMENT	ORB	DENOTES OFFICIAL RECORDS BOOK				
		PB	DENOTES PLAT BOOK				

SURVEYOR'S NOTES

1. THE BASE BEARING, AS SHOWN HEREON, IS S01°22'09"W ALONG THE EAST LINE OF TRACT "R", THE SHOPS OF DONALD ROSS REPLAT OF TRACT "A", RECORDED IN PLAT BOOK 103, PAGE 142.
2. IN THOSE INSTANCES WHERE UTILITY OR DRAINAGE STRUCTURES ARE CONSTRUCTED IN CONFLICT WITH THE PLATTED PERMANENT CONTROL POINT POSITION STRADDLERS MONUMENTED AS PERMANENT CONTROL POINTS WILL BE SET TO REFERENCE THE PLATTED POSITION.
3. LINES THAT INTERSECT CURVES ARE NOT RADIAL UNLESS OTHERWISE NOTED.
4. THIS INSTRUMENT WAS PREPARED BY WM. R. VAN CAMPEN, P.S.M. NO. 2424, IN AND FOR THE OFFICES OF ASSOCIATED LAND SURVEYORS, INC., 4152 WEST BLUE HERON BOULEVARD, SUITE 121, RIVIERA BEACH, FLORIDA, 33404

FILE: CIELOPLOT	
FB:	WO.NO.: P238
SCALE: 1"=10'	DATE: 12/25/2004
DWN: KVC	SHEET 19 OF 28



ASSOCIATED LAND SURVEYORS, INC.
 4152 W. BLUE HERON BOULEVARD—SUITE 121
 RIVIERA BEACH, FLORIDA 33404 LB NO. 7344
 PHONE: (561) 848-2102 FAX: (561) 844-9659 EMAIL: ALLSURVEY@AOL.COM