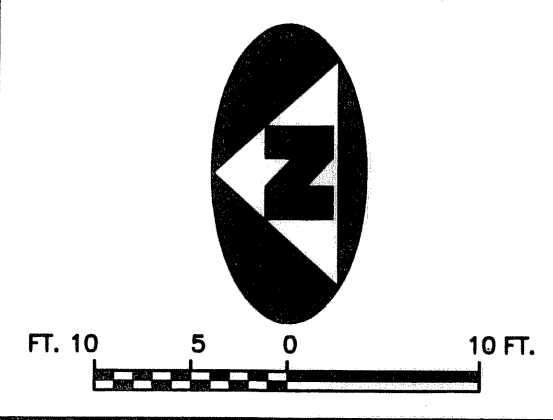
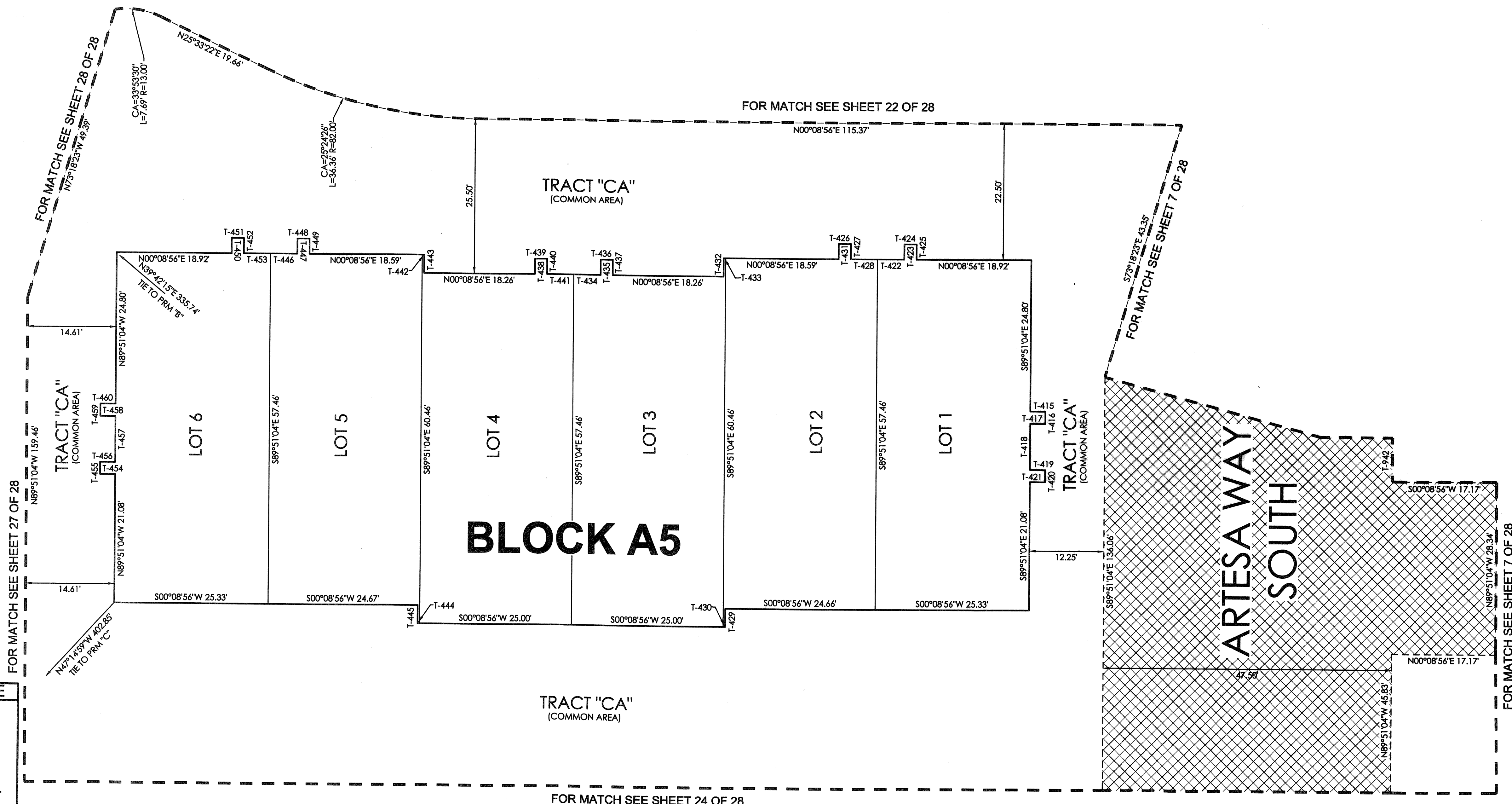


CIELO TOWNHOMES AT THE SHOPS OF DONALD ROSS

BEING A REPLAT OF TRACT "R", THE SHOPS OF DONALD ROSS REPLAT OF TRACT "A", RECORDED IN PLAT BOOK 103, PAGE 142, PUBLIC RECORDS, PALM BEACH COUNTY, FLORIDA AND LYING IN THE NORTHWEST ONE-QUARTER OF SECTION 25, TOWNSHIP 41 SOUTH, RANGE 42 EAST, CITY OF PALM BEACH GARDENS, PALM BEACH COUNTY, FLORIDA.

179



TANGENT TABLE

T-415	N00°08'56"E 2.50'
T-416	S89°51'04"E 2.00'
T-417	S00°08'56"W 2.50'
T-418	S89°51'04"E 7.58'
T-419	N00°08'56"E 2.50'
T-420	S89°51'04"E 2.00'
T-421	S00°08'56"W 2.50'
T-422	N00°08'56"E 4.41'
T-423	N89°51'04"W 2.50'
T-424	N00°08'56"E 2.00'
T-425	S89°51'04"E 2.50'
T-426	N00°08'56"E 2.00'
T-427	S89°51'04"E 2.50'
T-428	N00°08'56"E 4.41'
T-429	S89°51'04"E 3.00'
T-430	S00°08'56"W 0.34'
T-431	N89°51'04"W 2.50'
T-432	N89°51'04"W 3.00'
T-433	N00°08'56"E 0.34'
T-434	N00°08'56"E 4.41'
T-435	N89°51'04"W 2.50'
T-436	N00°08'56"E 2.00'
T-437	S89°51'04"E 2.50'
T-438	N89°51'04"W 2.50'
T-439	N00°08'56"E 2.00'
T-440	S89°51'04"E 2.50'
T-441	N00°08'56"E 4.41'
T-442	N00°08'56"E 0.33'
T-443	S89°51'04"E 3.00'
T-444	S00°08'56"W 0.33'
T-445	N89°51'04"W 3.00'
T-446	N00°08'56"E 4.41'
T-447	N89°51'04"W 2.50'
T-448	N00°08'56"E 2.00'
T-449	S89°51'04"E 2.50'
T-450	N89°51'04"W 2.50'
T-451	N00°08'56"E 2.00'
T-452	S89°51'04"E 2.50'
T-453	N00°08'56"E 4.41'
T-454	S00°08'56"W 2.50'
T-455	N89°51'04"W 2.00'
T-456	N00°08'56"E 2.50'
T-457	N89°51'04"W 7.58'
T-458	S00°08'56"W 2.50'
T-459	N89°51'04"W 2.00'
T-460	N00°08'56"E 2.50'
T-942	N89°51'04"W 7.24'

LEGEND

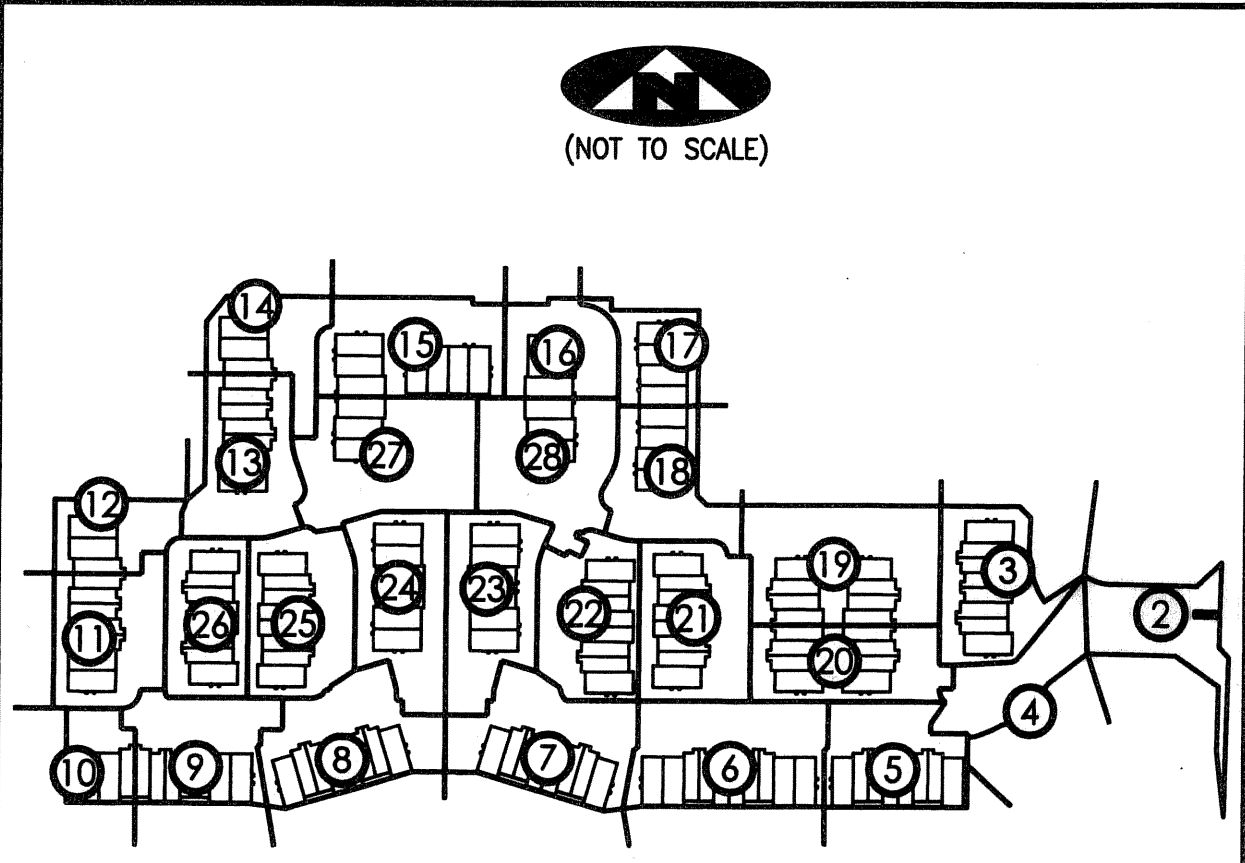
(R)	DENOTES A RADIAL LINE	R	DENOTES RADIUS DISTANCE	⊙	DENOTES A SET PERMANENT CONTROL POINT	□	DENOTES A SET PERMANENT REFERENCE MONUMENT (LB 7344)
C/L	DENOTES A CENTERLINE	L	DENOTES ARC LENGTH DISTANCE	⊙	DENOTES A FOUND PERMANENT REFERENCE MONUMENT (LB 2171)		
DE	DENOTES DRAINAGE EASEMENT	CA	DENOTES CENTRAL ANGLE				
SUA	DENOTES SEACOAST UTILITY AUTHORITY	LCB	DENOTES LONG CHORD BEARING				
LS	DENOTES LIFT STATION EASEMENT	CHD	DENOTES CHORD DISTANCE				
EAE	DENOTES EMERGENCY ACCESS EASEMENT	ORB	DENOTES OFFICIAL RECORDS BOOK	▨	DENOTES A SEACOAST UTILITY EASEMENT (ORB 17773, PAGE 469)	▩	DENOTES AN INGRESS, EGRESS, DRAINAGE AND UTILITY EASEMENT (PB 103, PAGE 142)
		PB	DENOTES PLAT BOOK				

SURVEYOR'S NOTES

1. THE BASE BEARING, AS SHOWN HEREON, IS S01°22'09"W ALONG THE EAST LINE OF TRACT "R", THE SHOPS OF DONALD ROSS REPLAT OF TRACT "A", RECORDED IN PLAT BOOK 103, PAGE 142.
2. IN THOSE INSTANCES WHERE UTILITY OR DRAINAGE STRUCTURES ARE CONSTRUCTED IN CONFLICT WITH THE PLATTED PERMANENT CONTROL POINT POSITION STRADDLERS MONUMENTED AS PERMANENT CONTROL POINTS WILL BE SET TO REFERENCE THE PLATTED POSITION.
3. LINES THAT INTERSECT CURVES ARE NOT RADIAL UNLESS OTHERWISE NOTED.
4. THIS INSTRUMENT WAS PREPARED BY WM. R. VAN CAMPEN, P.S.M. NO. 2424, IN AND FOR THE OFFICES OF ASSOCIATED LAND SURVEYORS, INC., 4152 WEST BLUE HERON BOULEVARD, SUITE 121, RIVIERA BEACH, FLORIDA, 33404

FILE: CIELOPLOT	
FB:	WO.NO.: P238
SCALE: 1"=10'	DATE: 12/25/2004
DWN: KVC	SHEET 23 OF 28

SHEET INDEX



1 = DENOTES SHEET NUMBER OF 28

ASSOCIATED LAND SURVEYORS, INC.
 4152 W. BLUE HERON BOULEVARD—SUITE 121
 RIVIERA BEACH FLORIDA 33404 LB NO. 7344
 PHONE: (561) 848-2102 FAX: (561) 844-9659 EMAIL: ALSURVEY@AOL.COM