

# NAUTICA LAKES P.U.D. - PLAT TWO

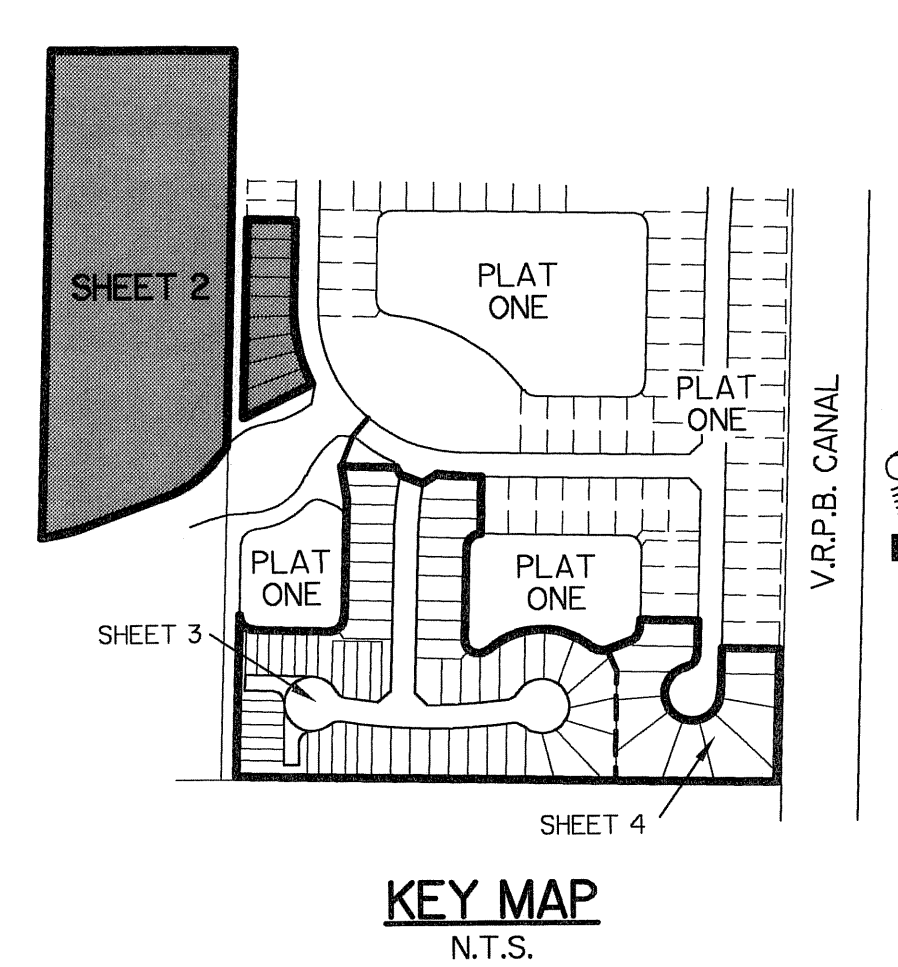
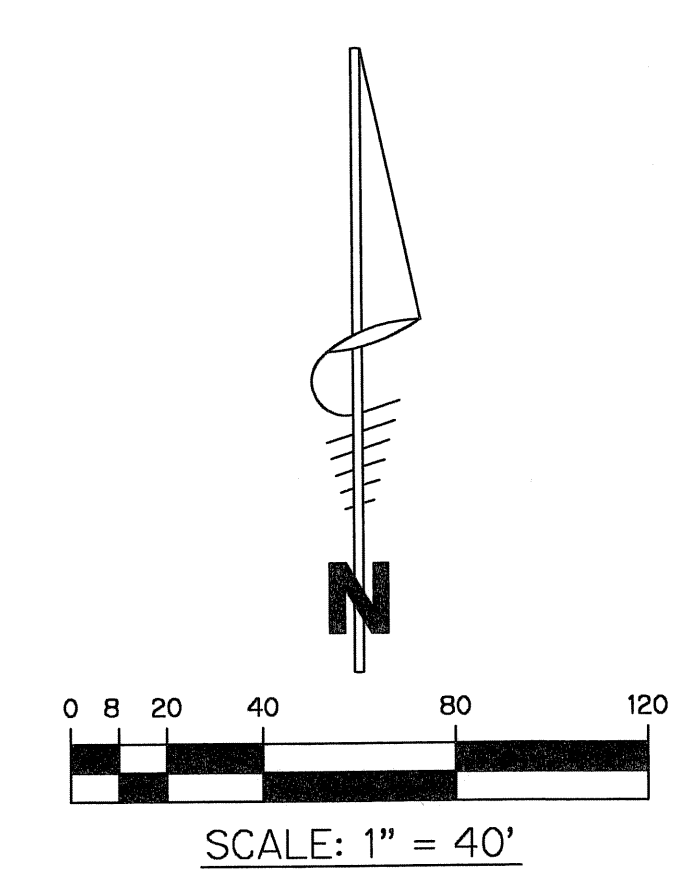
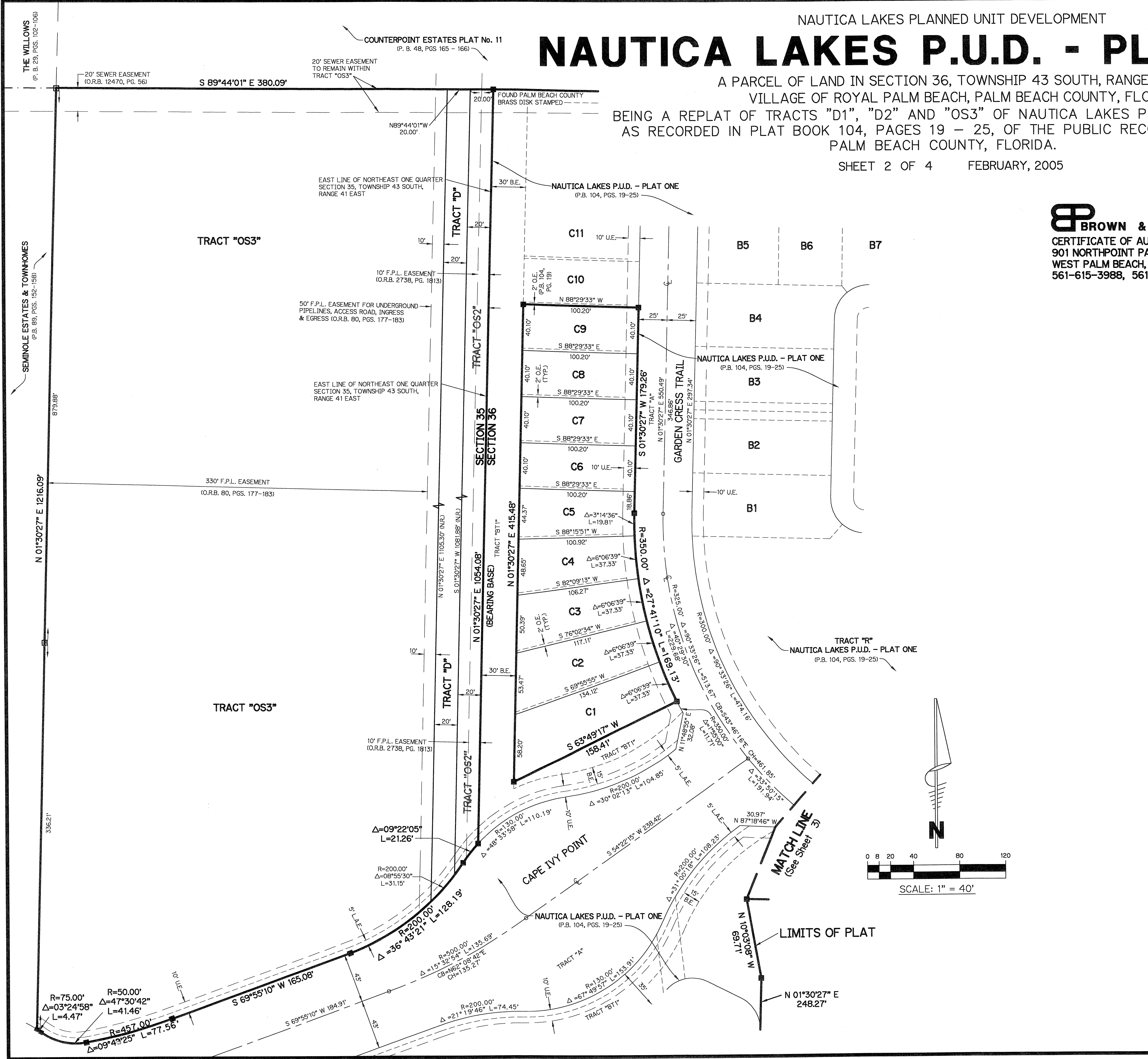
186

A PARCEL OF LAND IN SECTION 36, TOWNSHIP 43 SOUTH, RANGE 41 EAST,  
VILLAGE OF ROYAL PALM BEACH, PALM BEACH COUNTY, FLORIDA  
BEING A REPLAT OF TRACTS "D1", "D2" AND "OS3" OF NAUTICA LAKES P.U.D. - PLAT ONE,  
AS RECORDED IN PLAT BOOK 104, PAGES 19 - 25, OF THE PUBLIC RECORDS OF  
PALM BEACH COUNTY, FLORIDA.

SHEET 2 OF 4 FEBRUARY, 2005

**BROWN & PHILLIPS, INC.**  
CERTIFICATE OF AUTHORIZATION # LB 6473  
901 NORTHPOINT PARKWAY, SUITE 305  
WEST PALM BEACH, FLORIDA 33407  
561-615-3988, 561-615-3986 FAX

- LEGEND:**
- - SET PERMANENT REFERENCE MONUMENT, L.B. #6473
  - - FOUND PERMANENT REFERENCE MONUMENT, L.B. #6473
  - - SET PERMANENT CONTROL POINT, L.B. #6473
  - - FOUND PERMANENT CONTROL POINT, L.B. #6473
  - Δ - CENTRAL ANGLE
  - B.E. - BUFFER EASEMENT
  - CB - CHORD BEARING
  - CH - CHORD DISTANCE
  - C - CENTERLINE
  - D.B. - DEED BOOK
  - D.E. - DRAINAGE EASEMENT
  - L - ARC LENGTH
  - L.A.E. - LIMITED ACCESS EASEMENT
  - L.M.A.E. - LAKE MAINTENANCE ACCESS EASEMENT
  - L.M.E. - LAKE MAINTENANCE EASEMENT
  - V.R.P.B. - VILLAGE OF ROYAL PALM BEACH
  - N.R. - NOT RADIAL
  - N.T.S. - NOT TO SCALE
  - O.R.B. - OFFICIAL RECORD BOOK
  - O.E. - OVERHANG EASEMENT
  - P.B. - PLAT BOOK
  - P.C.P. - PERMANENT CONTROL POINT
  - PGS. - PAGES
  - P.O.B. - POINT OF BEGINNING
  - P.O.C. - POINT OF COMMENCEMENT
  - P.S.M. - PROFESSIONAL SURVEYOR AND MAPPER
  - R - RADIUS
  - R/W - RIGHT-OF-WAY
  - U.E. - UTILITY EASEMENT



**KEY MAP**  
N.T.S.