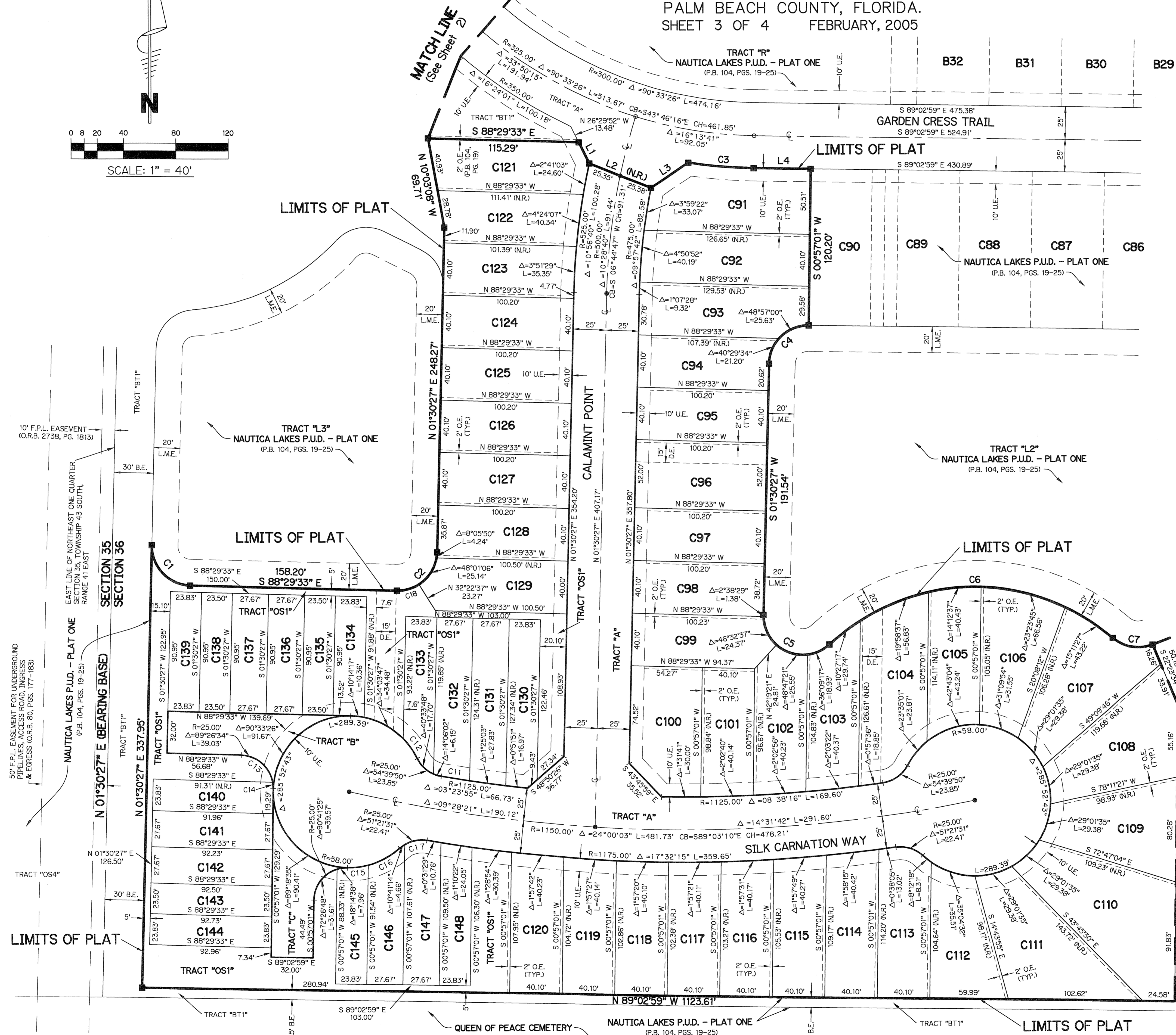
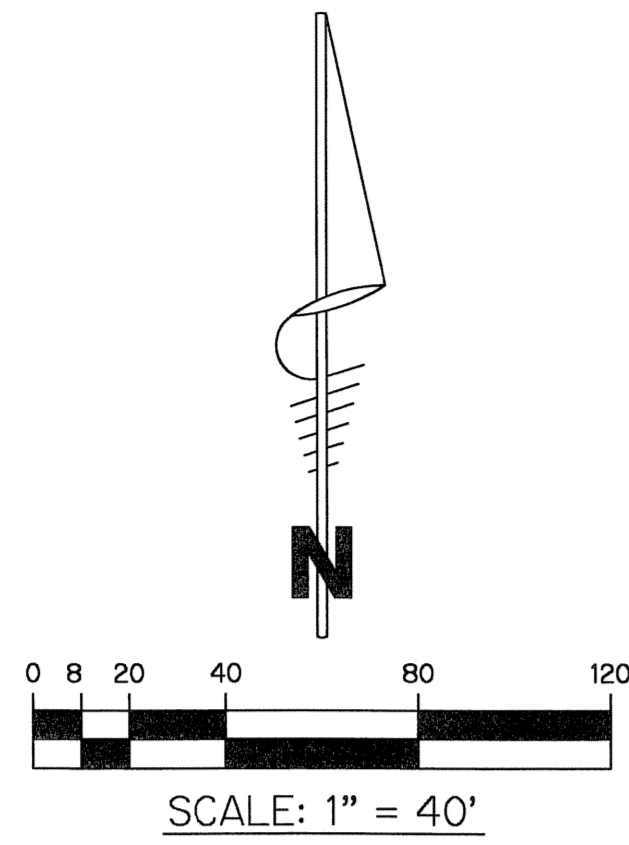


# NAUTICA LAKES P.U.D. - PLAT TWO

A PARCEL OF LAND IN SECTION 36, TOWNSHIP 43 SOUTH, RANGE 41 EAST,  
 VILLAGE OF ROYAL PALM BEACH, PALM BEACH COUNTY, FLORIDA  
 BEING A REPLAT OF TRACTS "D1", "D2" AND "OS3" OF NAUTICA LAKES P.U.D. - PLAT ONE,  
 AS RECORDED IN PLAT BOOK 104, PAGES 19 - 25, OF THE PUBLIC RECORDS OF  
 PALM BEACH COUNTY, FLORIDA.  
 SHEET 3 OF 4 FEBRUARY, 2005

**BROWN & PHILLIPS, INC.**  
 CERTIFICATE OF AUTHORIZATION # LB 6473  
 901 NORTHPOINT PARKWAY, SUITE 305  
 WEST PALM BEACH, FLORIDA 33407  
 561-615-3988, 561-615-3986 FAX

187



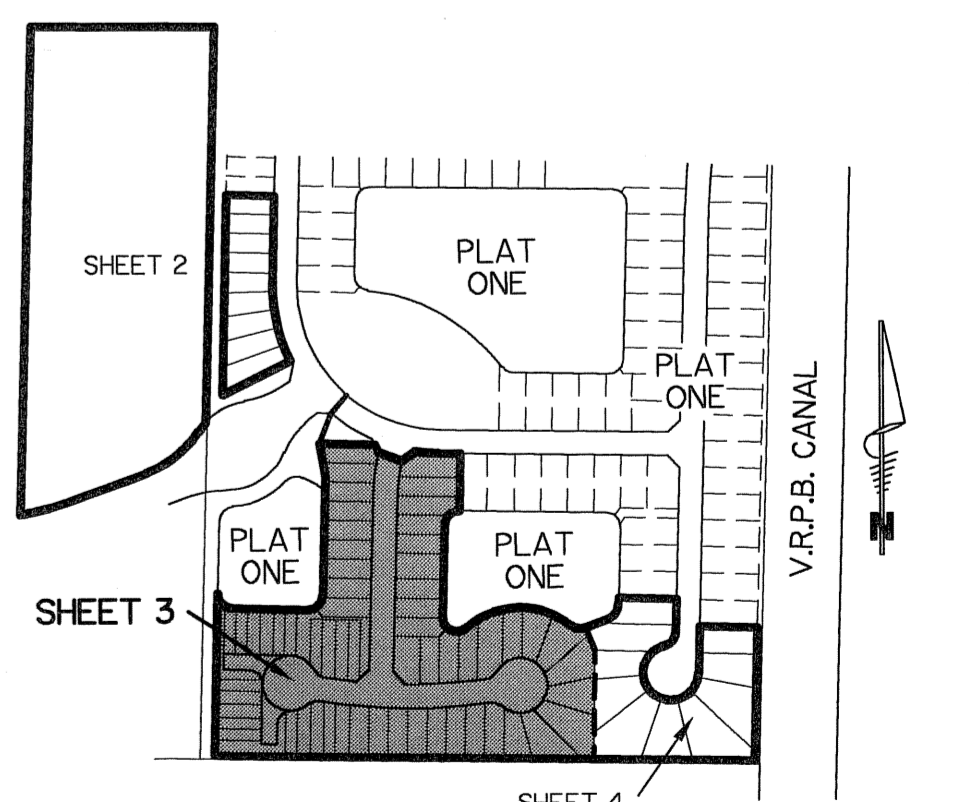
- LEGEND:**
- - SET PERMANENT REFERENCE MONUMENT, L.B. #6473
  - - FOUND PERMANENT REFERENCE MONUMENT, L.B. #6473
  - - SET PERMANENT CONTROL POINT, L.B. #6473
  - - FOUND PERMANENT CONTROL POINT, L.B. #6473
  - Δ - CENTRAL ANGLE
  - B.E. - BUFFER EASEMENT
  - CB - CHORD BEARING
  - CH - CHORD DISTANCE
  - CL - CENTERLINE
  - D.B. - DEED BOOK
  - D.E. - DRAINAGE EASEMENT
  - L - ARC LENGTH
  - L.A.E. - LIMITED ACCESS EASEMENT
  - L.M.A.E. - LAKE MAINTENANCE ACCESS EASEMENT
  - L.M.E. - LAKE MAINTENANCE EASEMENT
  - V.R.P.B. - VILLAGE OF ROYAL PALM BEACH
  - NR - NOT RADIAL
  - N.T.S. - NOT TO SCALE
  - O.R.B. - OFFICIAL RECORD BOOK
  - O.E. - OVERHANG EASEMENT
  - P.B. - PLAT BOOK
  - P.C.P. - PERMANENT CONTROL POINT
  - PGS. - PAGES
  - P.O.B. - POINT OF BEGINNING
  - P.O.C. - POINT OF COMMENCEMENT
  - P.S.M. - PROFESSIONAL SURVEYOR AND MAPPER
  - R - RADIUS
  - R/W - RIGHT-OF-WAY
  - U.E. - UTILITY EASEMENT

**LINE TABLE**

LINE	BEARING	LENGTH
L1	S26°29'52"E	17.95'
L2	S68°18'23"E	50.73'
L3	N55°19'14"E	34.64'
L4	S89°02'59"E	43.54'

**CURVE TABLE**

CURVE	RADIUS	DELTA	LENGTH
C1	30.00'	90°00'00"	47.12'
C2	30.00'	90°00'00"	47.12'
C3	350.00'	08°13'19"	50.22'
C4	30.00'	89°26'34"	46.83'
C5	30.00'	134°07'44"	70.23'
C6	163.00'	83°13'44"	236.78'
C7	30.00'	61°58'18"	32.45'
C11	1125.00'	01°07'01"	21.93'
C12	58.00'	18°25'39"	18.65'
C13	25.00'	78°57'05"	34.45'
C14	25.00'	10°29'29"	4.58'
C15	58.00'	15°58'44"	16.18'
C16	58.00'	27°18'16"	27.64'
C17	25.00'	40°40'18"	17.75'
C18	30.00'	33°53'04"	17.74'



**KEY MAP**  
N.T.S.