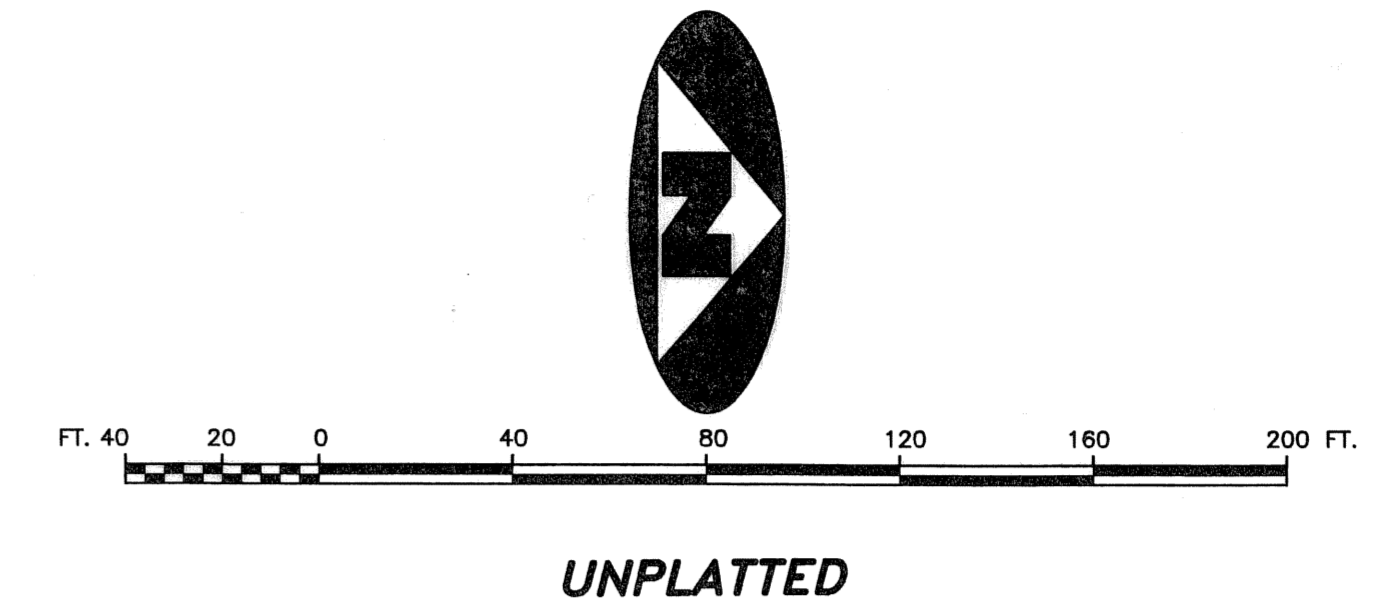
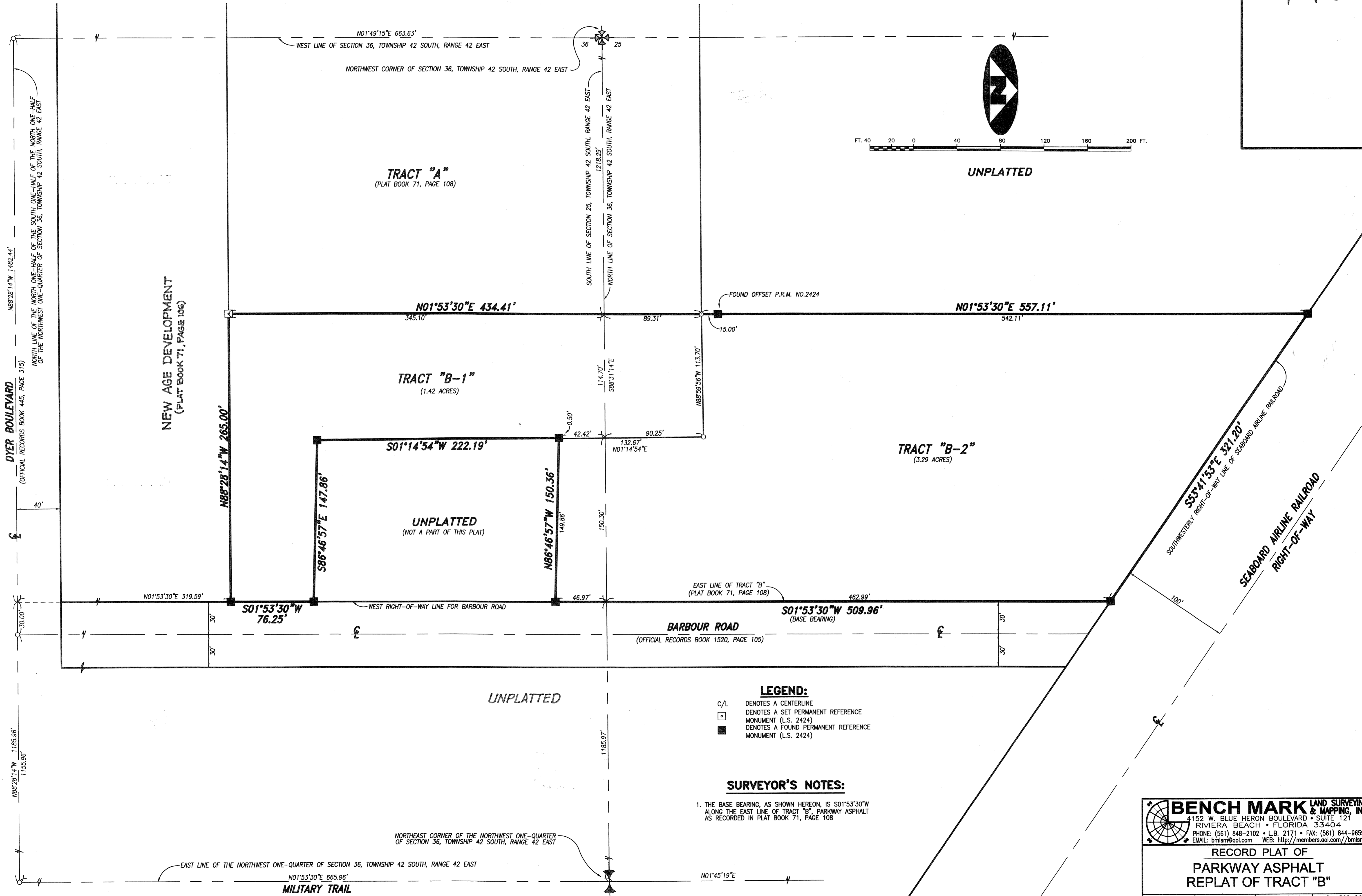


# PARKWAY ASPHALT REPLAT OF TRACT "B"

190

BEING A REPLAT OF TRACT "B", PARKWAY ASPHALT, RECORDED IN PLAT BOOK 71, PAGE 108, PUBLIC RECORDS PALM BEACH COUNTY, FLORIDA, AND LYING IN SECTIONS 25 AND 36 TOWNSHIP 42 SOUTH, RANGE 42 EAST, CITY OF RIVIERA BEACH, PALM BEACH COUNTY, FLORIDA



**LEGEND:**

- C/L DENOTES A CENTERLINE
- DENOTES A SET PERMANENT REFERENCE MONUMENT (L.S. 2424)
- DENOTES A FOUND PERMANENT REFERENCE MONUMENT (L.S. 2424)

**SURVEYOR'S NOTES:**

1. THE BASE BEARING, AS SHOWN HEREON, IS S01°53'30"W ALONG THE EAST LINE OF TRACT "B", PARKWAY ASPHALT AS RECORDED IN PLAT BOOK 71, PAGE 108

**BENCH MARK LAND SURVEYING & MAPPING, INC.**  
 4152 W. BLUE HERON BOULEVARD • SUITE 121  
 RIVIERA BEACH • FLORIDA 33404  
 PHONE: (561) 848-2102 • L.B. 2171 • FAX: (561) 844-9659  
 EMAIL: bmlsm@aol.com WEB: http://members.aol.com/bmlsm

**RECORD PLAT OF  
 PARKWAY ASPHALT  
 REPLAT OF TRACT "B"**

DWN KVC	FB	DATE 02/21/03	WO.# R92-0451
CKD	FILE PLATPLOT	SCALE 1"=40'	SHEET 2 OF 2