

- ABBREVIATION LEGEND:**
- P.O.B. - POINT OF BEGINNING
 - P.O.C. - POINT OF COMMENCEMENT
 - PRM - PERMANENT REFERENCE MONUMENT
 - - PERMANENT REFERENCE MONUMENT "LB6473" SET, UNLESS NOTED OTHERWISE
 - - MONUMENT, 1/2" IRON ROD WITH "BROWN & PHILLIPS" CAP TO BE SET
 - U.E. - UTILITY EASEMENT
 - D.E. - DRAINAGE EASEMENT
 - R/W - RIGHT-OF-WAY
 - CL - CENTERLINE
 - RPB - ROAD PLAT BOOK
 - ORB - OFFICIAL RECORD BOOK
 - P.B. - PLAT BOOK
 - D.B. - DEED BOOK
 - FND. - FOUND
 - CONC. - CONCRETE
 - (P) - PLAT BEARING OR DISTANCE
 - (M) - MEASURED BEARING OR DISTANCE
 - (C) - CALCULATED BEARING OR DISTANCE
 - (D) - DEEDED BEARING OR DISTANCE
 - PBCo - PALM BEACH COUNTY
 - R - RADIUS
 - C - CENTRAL ANGLE
 - A - ARC LENGTH
 - FPL - FLORIDA POWER & LIGHT
 - PG. - PAGE

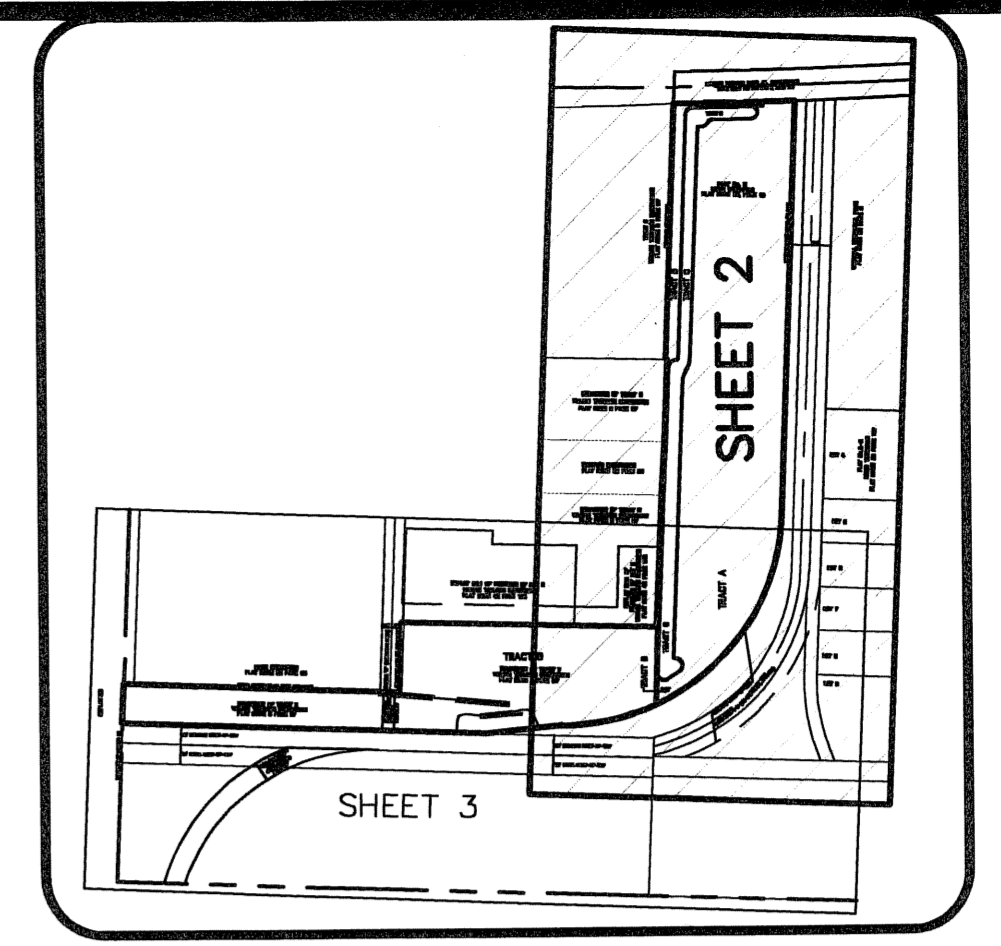
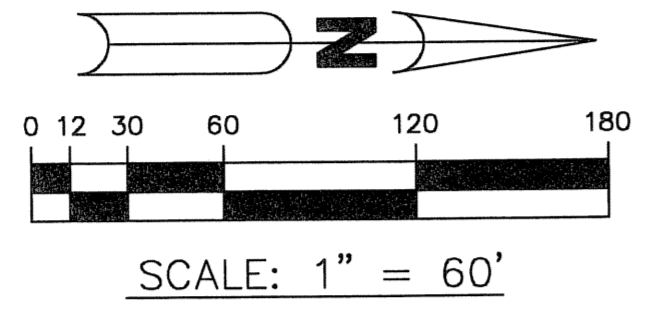
AVENUE S PROPERTIES

A PARCEL OF LAND IN SECTION 32, TOWNSHIP 42 SOUTH, RANGE 43 EAST, CITY OF RIVIERA BEACH, FLORIDA, BEING A REPLAT OF A PORTION OF PLAT No.2 LEWIS TERMINALS, RECORDED IN PLAT BOOK 27, PAGE 42, AND A REPLAT OF A PORTION OF TRACTS 6 AND 7 OF WILLIAM TAYLOR'S SUBDIVISION, RECORDED IN PLAT BOOK 5, PAGE 67, OF THE PUBLIC RECORDS OF PALM BEACH COUNTY, FLORIDA

SHEET 2 OF 3 JANUARY, 2005

THIS INSTRUMENT WAS PREPARED BY
JOHN E. PHILLIPS III, P.S.M. 4826

BROWN & PHILLIPS, INC.
CERTIFICATE OF AUTHORIZATION # LB 6473
901 NORTHPOINT PKWY., SUITE 305
WEST PALM BEACH, FLORIDA 33407
561-615-3988, 615-3986 FAX



KEY MAP
(NOT TO SCALE)

