



**CARNAHAN · PROCTOR · CROSS, INC.**

CONSULTING ENGINEERS · SURVEYORS · PLANNERS

6101 WEST ATLANTIC BOULEVARD, MARGATE, FLORIDA 33063  
PHONE: 954-972-3959 FAX: 954-972-4178

JUNE 2005

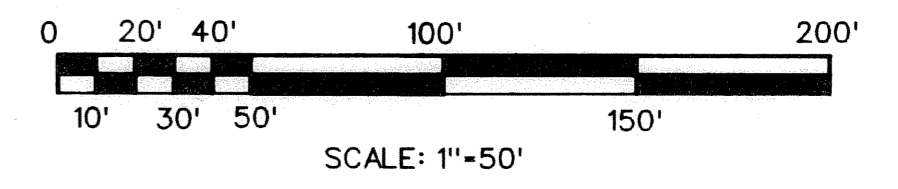
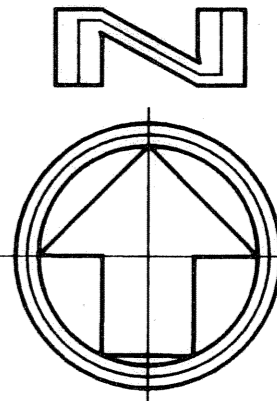
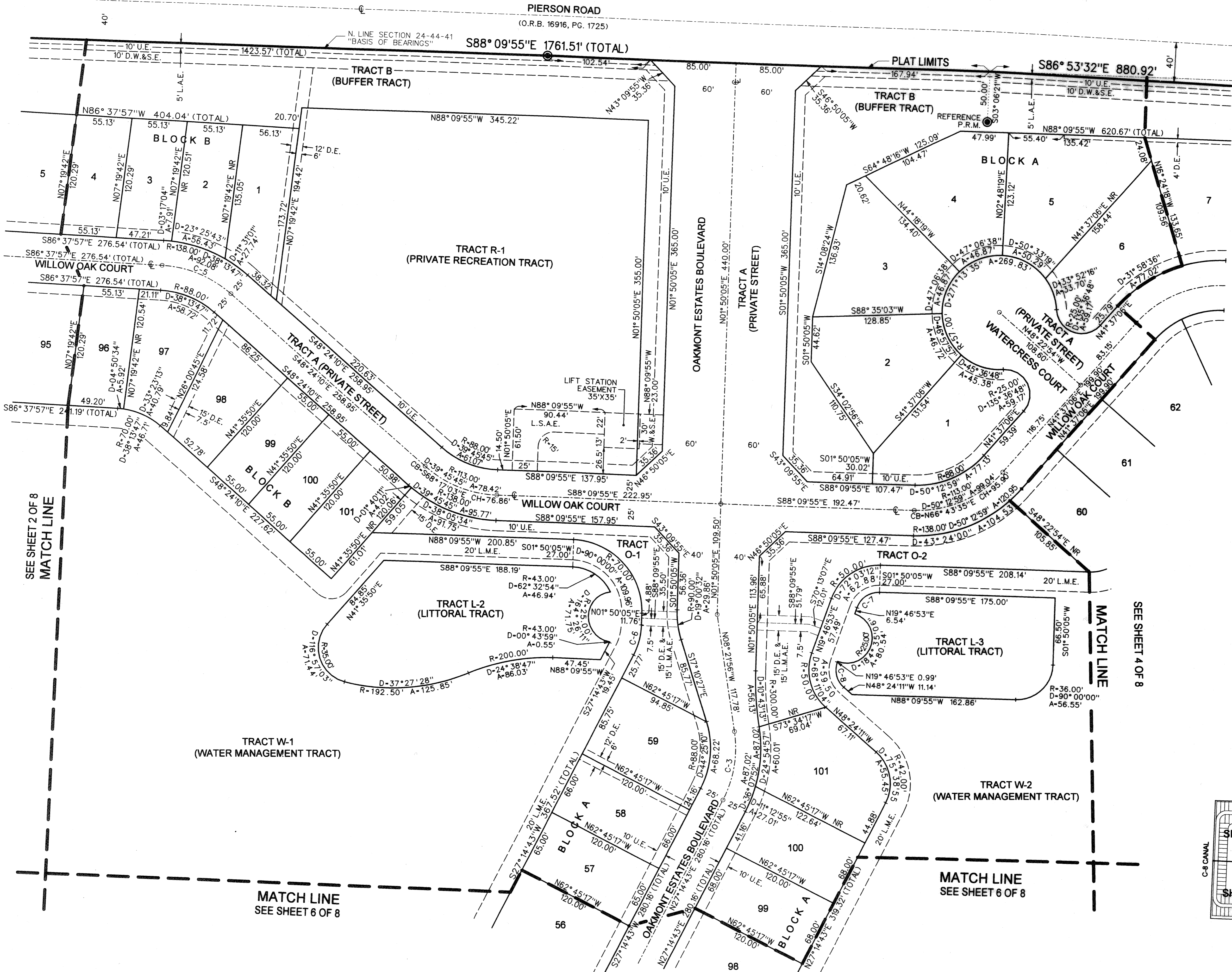
030715

DCW

# OAKMONT ESTATES P.U.D.

A PORTION OF THE NORTH ONE-HALF OF SECTION 24, TOWNSHIP 44 SOUTH, RANGE 41 EAST, INCLUDING A REPLAT OF A PORTION OF TRACTS 5 THROUGH 8 INCLUSIVE IN BLOCK 26, "PALM BEACH FARMS COMPANY PLAT NO. 3", AS RECORDED IN PLAT BOOK 2, PAGE 45, OF THE PUBLIC RECORDS OF PALM BEACH COUNTY, FLORIDA, LYING IN SECTION 24, TOWNSHIP 44 SOUTH, RANGE 41 EAST, VILLAGE OF WELLINGTON, PALM BEACH COUNTY, FLORIDA

4



**ABBREVIATIONS**

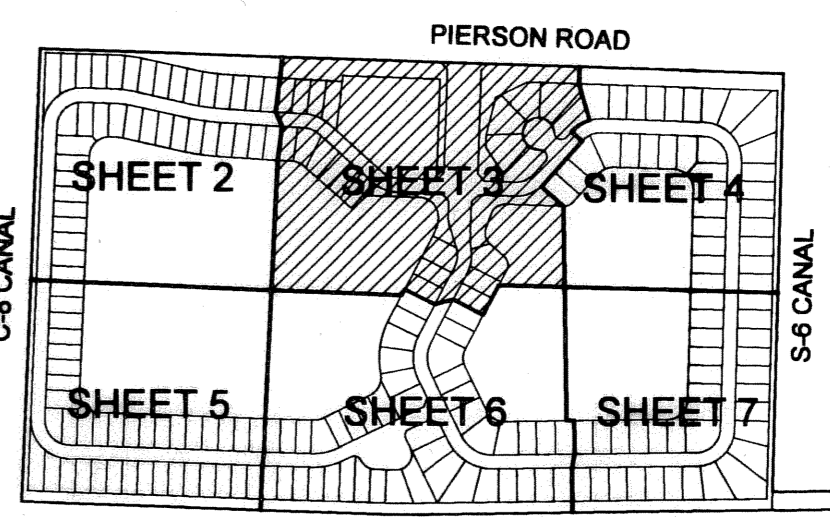
- A - ARC LENGTH
- B.E. - BUFFER EASEMENT
- CH - CHORD
- CB - CHORD BEARING
- D - DELTA (CENTRAL ANGLE)
- D.B. - DEED BOOK
- D.E. - DRAINAGE EASEMENT
- D.W.S.E. - DRAINAGE, WATER & SEWER EASEMENT
- F.P.L. - FLORIDA POWER & LIGHT CO.
- L.A.E. - LIMITED ACCESS EASEMENT
- L.E. - LANDSCAPE EASEMENT
- L.M.A.E. - LAKE MAINTENANCE ACCESS EASEMENT
- L.M.E. - LAKE MAINTENANCE EASEMENT
- L.S.A.E. - LIFT STATION ACCESS EASEMENT
- L.W.D.D. - LAKE WORTH DRAINAGE DISTRICT
- NR - NON RADIAL
- O.R.B. - OFFICIAL RECORDS BOOK
- P.B. - PLAT BOOK
- P.B.C.R. - PALM BEACH COUNTY RECORDS
- PG. - PAGE (S)
- P.U.D. - PLANNED UNIT DEVELOPMENT
- R - RADIUS
- R/W - RIGHT-OF-WAY
- S.E. - SEWER EASEMENT
- U.E. - UTILITY EASEMENT
- W.S.E. - WATER & SEWER EASEMENT

**LEGEND**

- ⊕ CENTERLINE
- PERMANENT CONTROL POINT
- PERMANENT REFERENCE MONUMENT  
SET 4" DIAMETER CONCRETE MONUMENT  
W/ DISC STAMPED P.R.M. LB2936

**CURVE DATA**

	RADIUS	CENTRAL ANGLE	ARC LENGTH	CHORD BEARING	CHORD LENGTH
C-3	R-113.00'	D-35° 36'40"	A-70.23'	CB-N09° 26'24"E	CH-69.11'
C-5	R-113.00'	D-38° 13'47"	A-75.40'	CB-S67° 31'04"E	CH-74.01'
C-6	R-70.00'	D-25° 24'38"	A-31.04'		
C-7	R-23.00'	D-72° 03'12"	A-27.37'		
C-8	R-23.00'	D-68° 11'04"	A-31.04'		



SEE SHEET 2 OF 8  
MATCH LINE

SEE SHEET 4 OF 8  
MATCH LINE

MATCH LINE  
SEE SHEET 6 OF 8

MATCH LINE  
SEE SHEET 6 OF 8