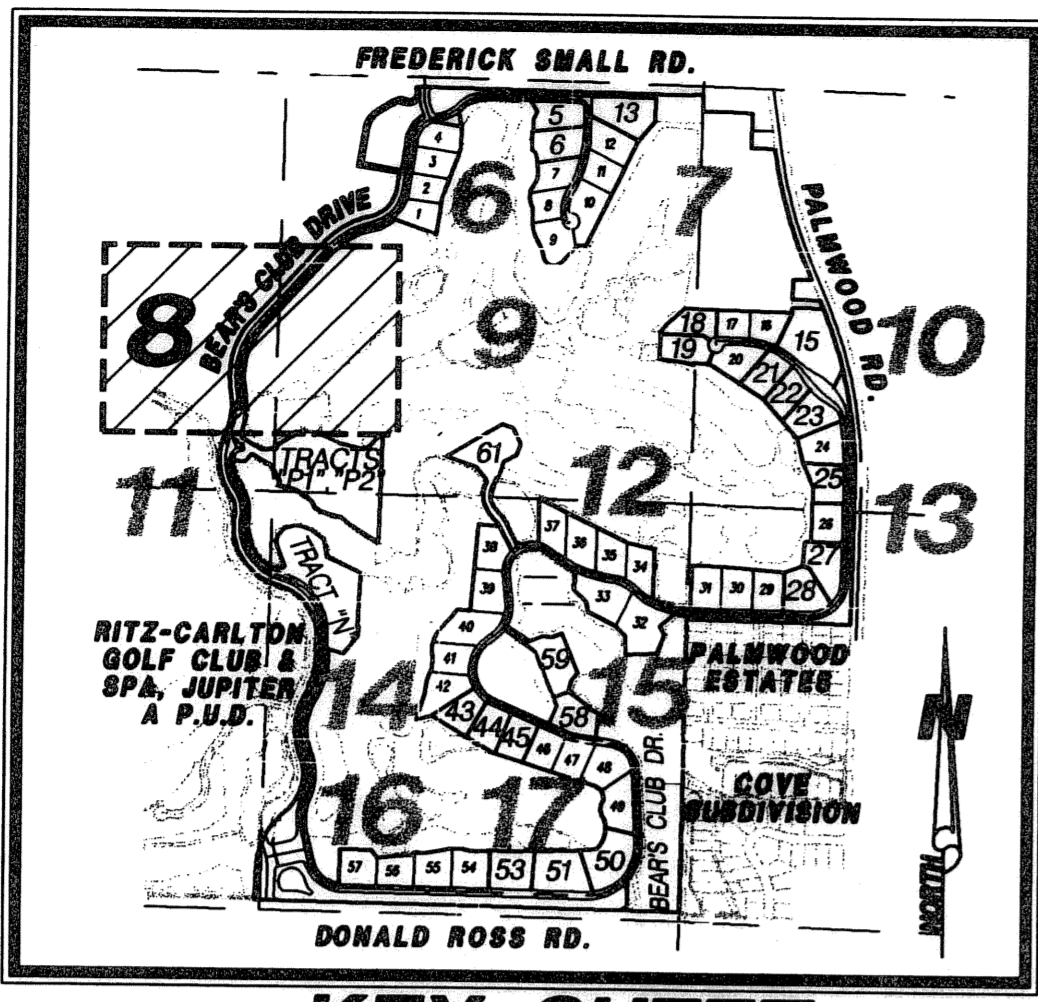


40

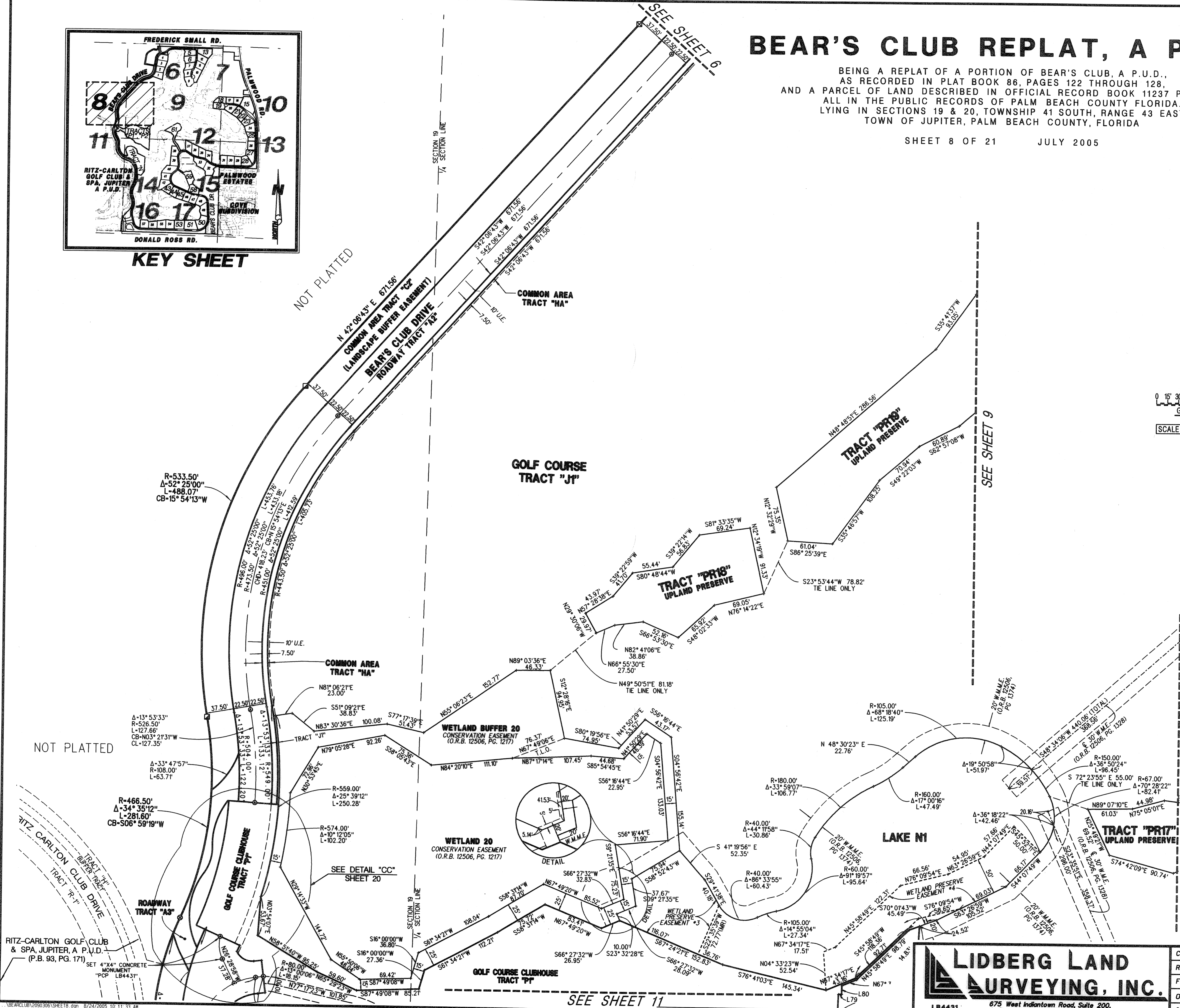
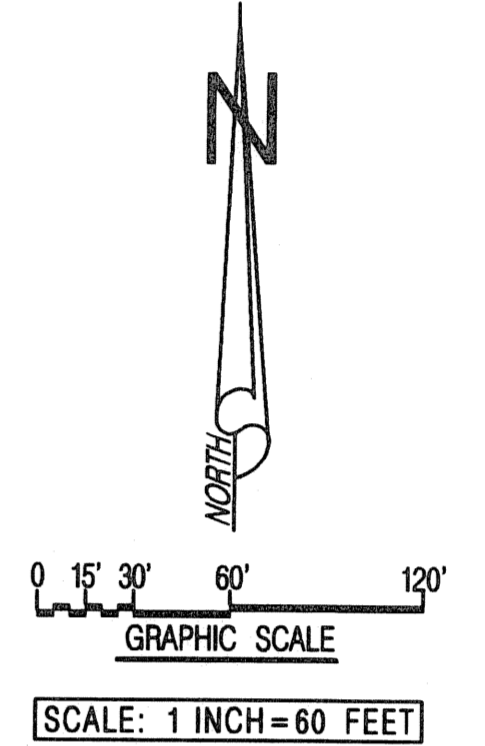
BEAR'S CLUB REPLAT, A P.U.D.

BEING A REPLAT OF A PORTION OF BEAR'S CLUB, A P.U.D.,
 AS RECORDED IN PLAT BOOK 86, PAGES 122 THROUGH 128,
 AND A PARCEL OF LAND DESCRIBED IN OFFICIAL RECORD BOOK 11237 PAGE 75,
 ALL IN THE PUBLIC RECORDS OF PALM BEACH COUNTY FLORIDA,
 LYING IN SECTIONS 19 & 20, TOWNSHIP 41 SOUTH, RANGE 43 EAST
 TOWN OF JUPITER, PALM BEACH COUNTY, FLORIDA

SHEET 8 OF 21 JULY 2005



KEY SHEET



LIDBERG LAND SURVEYING, INC.
 675 West Indiantown Road, Suite 200,
 Jupiter, Florida 33458 TEL. 561-746-8454

CAD. K:\UST\194143\BEARCLUB\2090306\ SHEET7.DGN		JOB 00-209-306	
REF. K:\UST\194143\BEARCLUB\2090306\2090306.DGN		DATE JUNE 2005	
FLD. B.D.	FB. PG.	DWG. 000-209P	
OFF. R.W. & E.C.	SHEET 8 OF 21		
CKD. D.C.L.			

BEARCLUB\2090306\2090306\2090306.SHEET8.dgn 8/24/2005 10:11:33 AM